

# STORAGE TRAILER SALES & RENTALS

Up To 45 Feet Long  
When & Where You Want It  
Farmers · Retail Stores  
Construction · Industry  
- 1000 uses -  
\$9000 per month/rental  
delivery additional cost



International 9 ton Tagalong trailer, \$1200 OBO 215/582-2197

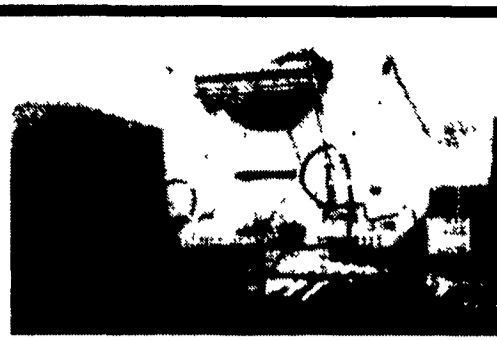
Looking for a clean used late model 45' flatbed trailer, excellent condition w/no rust 609-451-3877 8-5PM

Lowboy Single Axle Trailer w/beaver tail and ramp, set up for hauling equipment or hay, etc. \$800 717/922-3340

New 1991 350 Ford cab and chassis, GVW 8000 lbs, PS, automatic w/2000 miles, List \$15,700, \$11,800 717-653-5733

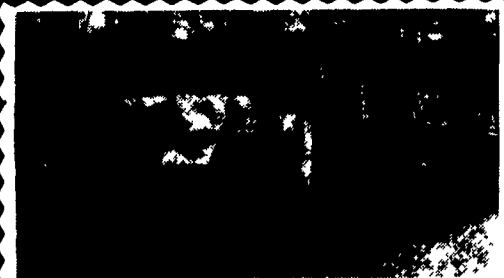
New 8' steel truck bed for 1 ton truck, \$400 (215)267-0810

One set of 3800lb tandem rears for R model Mack, new brakes, drums and bushings in suspension \$1500 302-239-6840



**1-1984 Hill Trailer**  
45 Ft. Long 72" Sides With Halco Walking Floor, 24.5 Tires  
3 - Trailers Available

**Fultz Bros.**  
R.D. 1 Ellitsburg, Pa. 17024  
717-438-3354



## INTERNATIONAL 6x6 BRIDGE TRANSPORTING STAKE BODY TRUCKS

Front Winch, PS, Air Brake, 1400/20 Tires, 21 ft. Bed with removable steel racks, Continental 6 cyl. engine. Like NEW 900-5,000 Miles. Excellent for off road heavy duty cargo transporting with their all wheel drive and ability to climb a maximum grade of 60 degrees + A must for every farmer. \$9,000 each or two for \$8,500 each.

814-834-1018 St. Marys, Pa.

## SHIRN'S ISUZU-GMC TRUCK

1804 Locoming Creek Rd., Rt. 15, Williamsport, PA 17701 Bus.: (717) 326-1581, Ext. 35, 36 & 37  
(800) 343-7456



1993 GMC 2500 4x4 Turbo Dsl, "Demo" Loaded



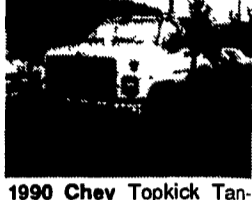
1979 Chev 27500 GVW, 5&2 366 V8, 10 Ft. Dump



1987 GMC 33,000 427 V8, 5 Spd., Like New, 84 CA Good Dump Chassis



1987 14 Van Alum. Cummins



1990 Chev Topkick Tandem 3116 250 Cat, 6 Spd., AC, 45,000 GVW, 20,000 Miles.

## '93 FORD CREW CABS



### IN STOCK:

- (1) '93 Gas, Auto
- (1) '93 4x4 Diesel, Auto., Centurion
- (4) '93 4x2 Diesel, Stick, Centurion
- (1) '93 4x2 Diesel, Stick
- (1) '93 4x2 Diesel, Auto.

## SHEEHY LEBANON

FORD · MERCURY · LINCOLN  
9-9 Daily, 9-5 Saturday Sheehy Hotline (717) 272-7671 or 533-5293  
20TH & CUMBERLAND STS. - RT. 422 WEST

'88 Chevy C70 with or without 18' cargo van, 366, 5 spd, PS, PB, 23,000 GVW, 65,000 miles, 1 owner, \$8,900 717-733-2873

'90 Dodge B350 12 passenger van, 318 EFI, auto, PB, PS, dual air & heat, charcoal, 28,000 miles, excellent condition, \$10,500 717-733-2873

'91 Ford F150 XLT Lariat pickup, 300 EFI, 5 spd, PS, PB, air, AM-FM, dual tanks, 31,000 miles, charcoal w/balance of factory warranty, excellent condition, \$9,950 717-733-2873

Aluminum tanker, 1 compartment, 7000 gallon, very clean condition, \$4,500 (717)532-8363

Aluminum dump trailer 26', 100% road ready, very nice condition w/tarp \$7,500 (717)532-2354

Bin Type Salt and Cinder Spreader, 5Yd Capacity, Set-Up for 6 Wheeler Dump Truck w/Central Hydraulics, \$700 OBO, Good Condition 302-239-6840

Featherlite 25' aluminum enclosed gooseneck trailer, used as mobile store, excellent condition 215/562-5868

Fertilizer tender truck, 1974 Chevy, 33,000 GVW, 6 ton dry auger tender and 640 gallon stainless tank w/pump and sparger, in good condition, \$6,500 (717)229-2311 weekdays from 8-5

FOR SALE 1976 International Loadstar 1700 School Bus titled as a truck, 345V-8 w/back cut out Currently used in a lawn care business Good for camper, welders, farmers, movers, storage, builders Use your imagination! Inspected, needs battery, \$1500 717/949-2332

FOR SALE 1975 U-Mack single axle tractor, 237 engine 5spd trans York County (717)792-4004



## USED EQUIPMENT SALE

### POSSUM BELLY TRAILERS

- 1984 Barrett 46'x96" x13'6" Cattle Trailer Jailhouse
- 1983 Barrett 48'x96" x13'6" Cattle Trailer
- 1983 Wilson 45'x96" x13'4" Cattle/Hog Combo
- 1982 Wilson 45'x96" x13'2" Cattle Trailer
- 1982 Wilson 45'x96" x13'6" Cattle-Pot

### STOCK TRAILERS

- 1989 16'x6'x6 1/2' Supreme B.H.
- 1986 20'x7 1/2' x7' Feather-Lite
- 1986 20'x8' Aluminum Walling
- 1985 Super Goose 20'x6'x6'10"
- 1983 Eby 18'x7'6" x6'6" Gooseneck
- 1982 Triggs 30'x8'x6' Fiberglass

### BODIES



1993 21'x6'6" x96" Double-Decker

Call For Special Pricing

- (4) 12' Eby Aluminum Cattle Body
- 17' Eby Cattle Body
- 21' Eby Aluminum - Double Deck
- 20' Fruehauf - Deck-Rail & Decking
- 8 1/2' Eby Aluminum - Chicken Body

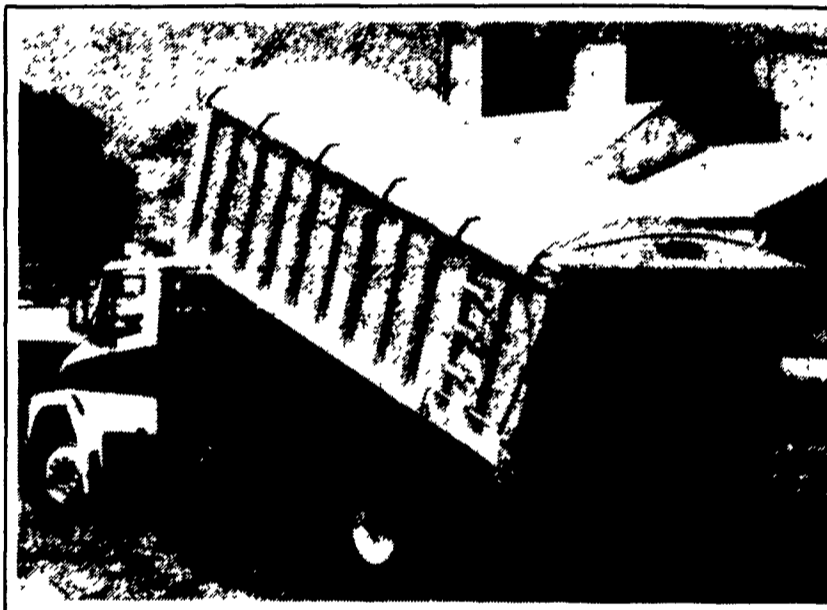
## M.H. Eby, Inc.

1194 Main Street (Route 23)  
Blue Ball, PA 17506  
(717) 354-4971 (800) 292-4752  
FAX (717) 355-2114

4435 State Route 29  
West Jefferson, OH 43162  
(614) 879-6901 (800) 752-0507  
FAX (614) 879-6904

# EBY AGRI-DUMP BODIES

Rugged...built like a heavy dump truck



### CHECK OUT THESE FEATURES/BENEFITS

- Up to 40% lighter than steel, for greater payload
- Designed for long life
- Resale value
- Corrosion resistant, never needs painting
- Appearance to complement any truck
- Complete list of popular options, including tailgates, tarps and sides

### STANDARD SPECIFICATIONS

- 6" heavy-duty extruded longitudinal sills
- 3" crossmembers on 12" centers on body lengths to 14'; 4" crossmembers on 12" centers on lengths over 14'
- 5"x1 1/4" extruded side posts, slanted for improved aerodynamics; 3"x2" heavy wall top rail
- .125" thick side sheets; .188" thick floor sheet (.250" thickness optional)
- Single acting tailgate with center flow chute, hinged top
- Rear ladder rung with step mounted on mud-flap bracket
- Includes mudflaps, aluminum splash shield, ICC-approved bumper and lights.

Eby Aluminum Agri-Dump Bodies pay off in dependable long-term service. Their all-aluminum construction means:

- Greater payload efficiency
- Maintenance-free service
- Substantially higher resale value.

Eby's time-tested design is available in lengths to 24' for grain bodies and 10 1/2' for general purpose dump bodies. A long list of standard features such as tarp rail, built-in steps, aerodynamic uprights and Harsh hoist is complemented by a full range of custom options, including tailgates, Wahpeton tarps and grain chute.

When you select your next grain body or general purpose dump body, consider the value that aluminum offers. It's a worry-free investment in your future.



### GRAIN BODIES

STANDARD LENGTHS: 12'; 14'; 15'; 16'; 17'; 18'; 20'; 22'; 24'

OVERALL WIDTHS: 96" standard, 102" optional

SIDE HEIGHTS: 48" standard, 54", 60" or 72" optional (other heights available on request)

### GENERAL PURPOSE DUMP BODIES

—Ideal for landscaping work, construction, and hauling of loose aggregate or bulk commodities

STANDARD LENGTHS: 8'; 8 1/2'; 9'; 10'; 10 1/2'

OVERALL WIDTHS: 82" or 98" standard

SIDE HEIGHTS: 24" standard, 30" and 36" optional



## M.H. Eby, Inc.

1194 Main Street (Route 23)  
Blue Ball, PA 17506  
(717) 354-4971 (800) 292-4752  
FAX: (717) 355-2114

## ATTENTION

Farmers - Landscapers  
Call Now For Special Pre-Spring Pricing

Committed to the Agri Transportation Business