

FREDERICK COUNTY
27th ANNUAL
**WACHTER
CONSIGNMENT
SALE**

MARCH 12 & 13, 1993

9:00 A.M.

Industrial & Farm Equipment, Etc.
NO TIRES

Frederick Fairgrounds
Frederick, Maryland

Sales Manager:
George Lease, 473-5211

Auctioneer,
Jim Cochran, 301-739-0538

Bill Baker, Sale Site,
301-694-8404

(after March 1)
Accepting Consignments Beginning
March 2

Public Auction Register

Closing Date Monday 5:00 P.M.
of each week's publication

**ANNUAL SPRING
CONSIGNMENT
AUCTION
SATURDAY,
APRIL 3, 1993**

At 9:30 AM

Isenock Auctions, New Park, PA

Accepting consignments of Farm Machinery, Tractors, Lawn & Garden, Tools, Trucks, Building Supplies, etc. Give us a list so that we may advertise for you.

**Isenock
Auction**
SERVICES INC

410-557-8052
717-993-2564
Lic. #AU2882-L

SAT. MAY 1 - 9AM, Ringo Hills Farm Machinery Auction. Located At Burtville (Potter Co.), Pa. Pirrung Auctions, Inc. 716-728-2520.

SAT. MAY 1 - 9AM Real estate, tools, household along Rt. 501 in Mt. Aetna, Berks Co., Pa. Sale for Irene Shower. Real Estate @ 12 Noon. Dwight D. Miller, auct.

SAT. MAY 1 - 9AM Walter B. Weaver Estate, real estate, personal property, antiques, cars. 111 New St., Blue Ball. Kline, Kreider & Good, auct.

SAT. MAY 1 - 10AM, Grade Heifer Sale. Located At New Holland Sales Stables, Inc., New Holland, Pa.

SAT. MAY 1 - 12Noon, Wenger's Annual Feeder Cattle Auction, Approx. 300 Head, All Sizes & Colors. Located Port Trevorton, Pa. Seller, Alvin Wenger. Fraley Auction Company.

WED. MAY 5 - 6:30PM, Consignment Auction Of Winross, Ertl, Hess Trucks, Misc. Nascar Items, And Misc. Toys. Located At A & C Dffenbach Auction Inc., 100 W. Jackson St., New

Holland, Pa. 17557. Alan Dffenbach, Auct.

THURS. MAY 6 - 9AM Household goods, antiques & coins. Located 2 miles S. E. of Millersville turn on West Frederick St. at Millersville University, turn on South Duke St. to Stehman Rd. Take Stehman Rd. then right on Long Lane. Sale at 1097 Long Lane, Lanc. Co., Pa. By Mary E. Shenk, Robert E & Jeffrey R. Martin, aucts

FRI. MAY 7 - 7PM, Horse Sale. Located At New Holland Sales Stables, Inc., New Holland, Pa.

SAT. MAY 8 - 9AM 1974 Chrysler New Yorker, 1960 Dodge dump body truck, snowmobile tris; Ferguson 30 tractor, MF 72 combine, farm equip, floral store equip & supplies, household goods & antiques. In N. Lehigh Co., next to Heidelberg Heights, Lehigh Co., Pa. By Melvin & Elaine Hausman Ralph W. Zettlemoyer, auct. Co.

SAT. MAY 8 - 9AM Antiques, barn related items, personal property. At 359 Habecker Church Rd., Lancaster, Pa., Manor Township, Lanc. Co. For Charles & Anna May Habecker. J. Omar Landis Auction Service.

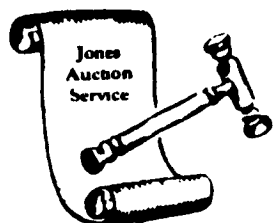
SAT. MAY 8 - 9AM 18th Annual consignment sale for Cumberland Valley Amish Schools. Held at Jacob Flaud Farm, Newburg, Pa. Auctioneer Steve Petersheim.

SAT. MAY 8 - 9:30AM, Kilts Farm All Day Auction. Located Bath, New York. Pirrung Auctions, Inc. 716-728-2520.

FRI. MAY 14 - 1:30PM, State Graded Feeder Pig Sale. Located At Carlisle Livestock Market, Inc., Exit 13, South Off I-81, Left Onto Alexander Spring Road. 717-249-4511.

SAT. MAY 14 5:30 & SAT. MAY 15 & 22 9AM, Real estate, household goods, antiques, glassware, collectibles, tools, car & riding mower. On West side of East Petersburg turn off Rt. 72 on 722 west or State St at 1615 State St. in Borough of East Petersburg, East Hempfield Twp. Lanc. Co., Pa. By Henry B. Goch-nauer, Robert E & Jeffrey R. Martin, aucts.

SAT. MAY 15 - 10AM 300 M/L Milk bottles, held at Brickerville Fire Hall just off of Rt 322 West of Ephrata in the village of Brickerville, Pa. Lanc. Co. By H E Stauffer. Snyder's Auction Service.

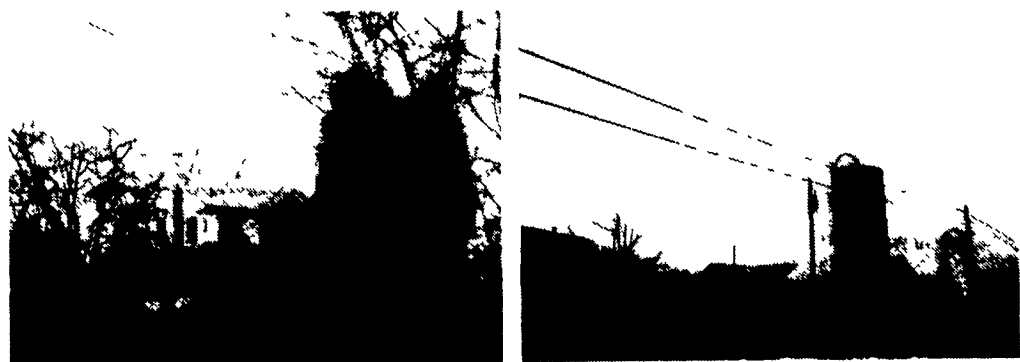


PUBLIC AUCTION

SAT., MARCH 20, 1993 9 AM

Located along the Klingerstown to Pillow Road, 2 mile West of Klingerstown, Pa. 5 mi. East of Pillow & Rt. 225 Jordon Twp, Northumberland County (37 mi. N.E. of Harrisburg, Pa.)

153± ACRE FARM



Approx. 82 acres of good tillable soil. 60± ac. woodland, 2½ story 4 bedroom farm house, vinyl siding, new oil h. water furnace in 1989, home in good state of repair. Bank barn with 30' W x 86' L 2 story addition. Num. other outbuildings, barn presently set up for steers. Spring - well and pond on farm.

For inspection or information Ph. (717) 286-0052. Plan to inspect this beautiful farm. Arrange your financing and be prepared to bid at auction. To be offered at 12 noon.

Terms: 10% down day of auction, balance due in 60 days. (No out of state checks.)

Farm located in the proximity of Lykens Valley and Amish Community.

5 TRACTORS - FARM MACHINERY

JD 2010 Gas Utility w/Loader; Farmall 560 Diesel T/A w/#234-2 Row Mounted Corn Picker; Farmall 350 D. Utility w/2000 Loader; Oliver 1800 D. Dual Remotes W.F.E; Oliver 88; Wide Front End for Farmall H or M; Brady 12' Chisel Plow; White 12' Disc; J.D. 10' Roller Harrow; Gehl #65 Grinder Mixer; Fox 3000 Forage Harvester Narrow 2 Row Corn Head & 6' Grass Head; Gehl 16' Forage Wagon; Grove 14' Forage Wagon; Gehl #88 Blower; 9" Blower Pipe; N.H. 40' Hay Elevator; E2 Flow Gravity Wagon, 8 Ton Running Gear; J.D. #44 Manure Spreader; New Idea #214 Manure Spreader; Ontario Grain Drill on Rubber; M.M. Corn Sheller, Model D; Woods 6' Pull Type Rotary Mower; J.D. #10 Side Mount Sickle Bar Mower; Int. #100 F.H. Dyna-Bal. Mower; J.D. 3 Pt. 6 Row Cultivator; 9' Double Cultipacker; J.D. 3 Section Harrow; J.D. #45 Loader; Perkins 354 D Power Unit; Int. UD 14 A Diesel Power Unit (Not Running); Int. B Power Unit; 1300 Gal. Poly Fert. Tank; Hobart Gas Powered 400 Amp Welder; Jeep 4 Cyl. 110-220 Generator; Pr. 18.4-34 Tires & Rims; New 18.4-34 Tire; Platform Scales; Many Hand Carpenter & Mechanic Tools, Plus Farm Related Items; New & Used Lumber; Elec. Motors up to 5 H.P.; Piles of Scrap Metal & Pipe; Chicken Crates, Feeders, Etc.; Approximately 500 Bales of Hay - 900 Bales of Wheat Straw - 300 Bales of Oats Straw; D.D. 110 Lawn & Garden Tractor, Etc.

1948 International KB6 Truck w/70,000 Miles.

1963 Ford F600 Boyertown Dump Grain Box.

ANTIQUES - COLLECTIBLES - HOUSEHOLD

Walnut Desk (Made From Pump Organ); Cottage Style Washstand & Dresser Base; 4 Pc. Depression Style Bedroom Suite; Mahogany Stand; Oak: Roll Top Desk (Painted), Highchair, Child's Rocker; Quilt Frame; Claw Foot Piano Stool; Oak Wall Telephone; Old Desk Top Telephone; Yarn Winder; Sq. Oak Ext. Table w/5 Boards; Adv. Clock, Quick Arrow Soap Flakes; Kerosene Lights; Crocks & Jugs; 3 Gal. Cowden Decorated Crock (Cracked); Milk Cans; Cow Butter Print, Handle Missing; Erie Tea Kettle; School Desks; Enterprise #49 Veg. Cutter; Grand Union Tea Co. Coffee Grinder; Dog Nut Cracker; Wooden Adv. Boxes; Salt Dips; Boxes of Books; Etc.

HOUSEHOLD: Wards 2 Dr. Refrigerator Freezer; Chest Freezer; Maple Frame Living Room Furniture; Bedroom Furniture; White Sewing Machine; Cribs; Cedar Lined Wardrobe; Plus Other Items of Interest.

TERMS: Cash or PA Check.

Lunch

Owner

MRS. (GEORGE R.) CORRINE D. WOLFGANG

Attorney: Carpenter - Diehl - Kivko
Mark J. Jones Auctioneering Service
Phone (717) 286-0052 Lic. #AU1595-L
Jeff Dunkelberger Lic. #AU3043-L

SALE ORDER: 9:00 a.m. Tools - Wagon Items; 9:30 a.m. 2nd Auctioneers Will Start Selling Household - Antiques; 1:00 p.m. Farm Machinery.



PUBLIC AUCTION

**Farm Machinery - Corn Silage - Front End Loader
Four Tractors - New Holland Discbine, New '92
Milking System**

**Auction Held For Russ Hill Farms
Wednesday, March 10, 1993**

10:00 A.M.

Located in Chester County, PA, 3 miles South of Cochranville. At junction of Route 10 & Route 41 go South on Route 10. From Route 1 go North on Route 10 - two miles. On corner of Route 896 and Route 10.

3 Diesel International Tractors - A.C. D14

1086 International diesel 3580 original hours, 20-8r-38 radial tires, cab-rear weights, turbo-charged, 16 speed torque advanced; International 2350 loader with 8' bucket sells separate, 1000-540 P.T.O., dual outlets; 684 International diesel, wide front, 540-1000 P.T.O., good rubber; 886 International diesel, 3000 hrs., 18-4-38 radial tires, like new front tires, full set of weights, torque advanced, dual outlets, 540-1000 P.T.O.; A.C. D14 gas, full set cultivators, tractor runs, needs some work; 10 HP International riding mower; stationary high moisture roller mill.

Barn Supplies - Semen Tank - Milk Cans

Milking system for double 4 milking parlor, stainless steel milk line, vacuum lines, receiver jar, milk pump, 4 DeLaval D.V. 300 milker units; NuPulse line washer sells separate, new 1 year; DeLaval V.P. 78 vacuum pump with retaining tank and electric motor; cooling compressor; 600 gallon Esco milk tank; Wic bed chopper; milk house supplies; 2 full 15 gallon detergent - sanitizer; 7 gallon teat dip; heat recovery system pre heater, 114 gallon; 16 week semen tank with approximately 30 straws of semen; approximately 20 milk cans; cow clippers; small refrigerator; large dehorner; 2 tunnel fans; 3 circulating fans; hay hook; New Holland 16' Mow conveyor; single chain Cardinal elevator; Winpower 45-25 portable generator; 2 Jamesway silo unloaders, 20' & 16', excellent cond., rebuilt in '92 also 16' unloader for parts; Farmmaster stationary feed mixer, Clay milking parlor parts; 8x20' flat truck bed.

Farm Machinery

Brillion 5 tooth 12' cut B.T.S. 5 deep tiller with gauge wheels, new '92, John Deere 6 bottom 1745-18" semi mounted plow; Bush Hog tandem wheel hydraulic fold up disc harrow; 2 single 8' cultipackers; 10' single cultipacker; New Holland 44 Discbine '99', new '92; New Holland 254 tedder rake, new '92, New Holland 276 baler with 58 thrower in good condition; 3 - 16' bale wagons, good condition; Little Giant 38' elevator; 2 New Holland No. 8 forage crop carrier wagons, 2 beaters, roof extension conveyors, rear unloading, 8½ ton gears, nice condition, Case International 600 forage blower, new 3 years; Gehl Hi-throw forage blower; John Deere 7000 conservation corn planter, dry fertilizer with Dickey John monitor; 5 gravity bin wagons, 2 McCurdy 240 bushel with extension sides, EZ flow gears, Grove 30' elevator; 200 gallon boom field sprayer, Century, new pump '92, International 510 grain drill, 16 single disc openers, 7" small seed attachment, Ezee flow fertilizer drill; Clay 1500 gallon liquid vacuum spreader, John Deere 2 section spring tooth harrow; 3 pt. weeder, forage parts, 8' Bush Hog rotary mower, new '92; 60' endless belt; drill press; more items not listed, iron piles, approximately 600 ton corn silage will be sold per foot; unloaders available to use.

Owner:

Dale Edwards

Auctioneer:
Steve

Steve Jr. Petersheim:

215-593-AUCT

AU 001349L



Food On Premises

**AUCTIONEER'S NOTE: Machinery shed kept,
field ready - well maintained**