

Lancaster Co. Livestock Market Auctions

Lancaster Livestock Auction

Lancaster, Pa.
Monday, March 1, 1993
Cattle Calves Hogs Sheep Goats

Monday's Auction	1067	172	225	952	194
Last Monday's Auction	936	87	128	547	305
Last Year's Auction	1093	71	171	1108	361

CATTLE: Slaughter steers and heifers fully steady; cows 1.00 lower; bullocks and bulls steady. Supply includes 63% slaughter steers, 12% heifers, 16% cows with the balance bulls.

SLAUGHTER STEERS: Choice 2-3 few 4 1100-1425 lb 78.50-80.50, few 80.50-81.00; few mixed Choice and Prime mostly 3 1150-1425 lb 80.60-81.85; Select and low Choice 2-3 1050-1375 lb 74.50-79.00; few Select 2-3 1050-1350 lb 72.00-74.00.

HOLSTEINS: Choice 2-3 1100-1600 lb 66.50-70.85, couple 1800-1860 lb 66.00-67.85, few High Choice and Prime 2-3 1325-1550 lb 70.50-72.50.

SLAUGHTER HEIFERS: Choice 2-3 960-1250 lb 74.85-77.85; couple Choice 2 1135-1250 lb 79.85-80.00; Select 2-3 950-1200 lb 70.00-73.50.

COWS: LO DRESSING BULK HI DRESSING Breaking Utility & Commercial 2-3 50.00-52.50 52.50-53.50 Commercial 3-4 45.50-48.50 Cutter & Boning Utility 1-2 49.00-52.00 52.00-53.00 Canner and low Cutter 44.00-46.00 46.00-49.00.

BULLOCKS: Choice 2-3 1100-1450 lb 68.50-72.00, couple 72.25-73.25; few Select 1-3 1150-1400 lb 65.00-68.00.

BULLS: Yield grade 1 1250-2200 lb 63.50-67.50, few 67.50-72.00, with eight head 1600-2005 lb 76.50-80.00; Yield grade 2 1000-1500 lb 60.00-63.50, few low dressing 57.00-60.00.

CALVES: Vealers steady; slaughter calves mostly 5.00 higher. Demand good for Holstein bulls to return to farm.

VEALERS: Choice 22 lb 75.00-90.00; Good 250-650 lb 65.00-75.00.

RETURNED TO FARM: Bulk 90-125 lb Holstein bulls 145.00-175.00.

HOGS: Barrows and gilts 1.00 lower; sows 2.00 lower, instances 5.00 lower on weights over 500 lb

BARROWS AND GILTS: US 1-2 215-255 lb 46.00-46.50. US 1 215-235 lb 47.00-48.00. US 1-3 215-255 lb 45.50-46.00.

SOWS: US 1-3 300-600 lb 40.00-42.50. BOARS: All Weights 30.00-32.50.

SHEEP: Slaughter lambs weak to 5.00 lower; slaughter ewes steady to weak. Supply included 35% woolled lambs, 35% new crop lambs, with balance slaughter ewes.

WOOLED LAMBS: Choice 2-3 60-105 lb 85.00-95.00.

NEW CROPLAMBS: Choice 2-3 35-70 lb 100.00-135.00, 70-100 lb 90.00-100.00.

SLAUGHTER EWES: Utility and Good 30.00-55.00; Yearlings and two-year olds 45.00-70.00.

GOATS: All goats sold by the head. Large 60.00-100.00, few Billies 100.00-

Vintage Livestock Auction

Paradise, Pa.
Tuesday, March 2, 1993
Report Supplied by USDA
Cattle Calves Sheep Goats

Today	905	789	7	5
Last Tuesday	661	878	0	0
Last Year	703	822	6	2

CATTLE ..USDA... Supply included 33% slaughter steers and 59% cows ...

Compared with Monday's market: sl. steers weak to .50 lower; sl. heifers steady; cows 1.00 to 2.00; bullocks and bulls steady. SL. STEERS: Choice 2-3 few 4 1075/1435 lbs. 77.75-80.25, few 80.25-81.00, Choice and Prime 2-3 1150/1425 lbs. 80.50-81.75, couple 82.00-82.50, Select and Low Choice 2-3 1050/1450 lbs. 74.00-78.25. HOLSTEINS: Choice 2-3 1225/1660 lbs. 67.00-69.85, few High Choice and Prime 2-3 1325/1500 lbs. 69.75-70.85, Select 1-3 1180/1350 lbs. 63.75-65.60. HEIFERS: Choice 2-3 1050/1265 lbs. 77.75-79.25, few Select 2-3 1050/1100 lbs. 71.75-72.25, few Choice 2-3 1260/1630 lbs. Holsteins 60.00-64.00.

COWS: Breaking Utility and Commercial 2-3 bulk 48.00-52.00, high dressing 52.00-55.00, Cutter and Boning Utility 1-2 low dressing 47.00-49.00, bulk 49.00-52.25, high dressing 52.50-54.50, Canner and Low Cutter low dressing 41.00-45.00, bulk 45.00-49.00. BULLS: Yield Grade No. 1 1300/1800 lbs. 61.00-64.50, few Yield Grade No. 2 995/1500 lbs. 58.00-61.50.

CALVES...Supply sold mainly to return to farm, with only 30 sold for slaughter and these mainly 50/100 lbs. Supply included 673 in graded sale. VEALERS: few High Good and Low Choice 80/110 lbs. 50.00-56.

00, one lot Standard and Low Good 70/75 lbs. 41.00. RETURNED TO FARM: 40 head Holstein bulls 120/125 lbs. 168.00-169.00, 230 head 100/115 lbs. 170.00-181.00, 80 head 85/95 lbs. 161.00-168.00, and 15 head 80 lbs. 154.00, 70 head small frame 100/115 lbs. 125.00-130.00 and 65 head 80/95 lbs. 140.00-146.00. 25 head Holstein heifers 100/115 lbs. 165.00, 25 head 90/95 lbs. 152.00 and 25 head 85 lbs. 115.00, 30 head small frame 65/95 lbs. 60.00-66.00.

SHEEP...No market test. GOATS...No market test.

125.00. Medium 50.00-60.00; Thin 40.00-50.00. Small, mainly kids, 30.00-40.00; few Thin 20.00-30.00.

Lancaster Livestock Auction

Wednesday's market report has been discontinued until further notice because of insubstantial receipts.

Aberdeen Sales Company, Inc.

Complete Auction & Appraisal Service
Churchville, Md.

Wednesday, March 3, 1993

SLAUGHTER STEERS: MARKET STEADY. CHOICE 2-4 1100-1400 LBS. 77.00-81.50; SELECT & LOW CHOICE 1000-1500 LBS. 74.00-77.00; HOL. STEERS HI CHOICE & PRIME 1250-1400 LBS. 69.00-72.00; CHOICE 1200-1500 LBS. 68.00-70.50; SELECT, ALL WEIGHTS 58.00-70.00.

SLAUGHTER HEIFERS: MARKET STEADY. CHOICE & PRIME 950-1300 LBS. 76.00-80.00; SELECT ALL WEIGHTS 900-1400 LBS. 69.00-75.00.

COWS: MARKET FULLY STEADY. BRK. UT. & COMM. 2-4 BULK 49.00-53.00; HI DRESSING 54.00-57.00; CUTTER & BON. UT. 47.00-51.00; HI DRESSING 52.00-54.00; CANNER & CUTTERS 45.00-51.00; LOW DRESSING 45.00-DOWN.

BULLS: MARKET 1.00 HIGHER. ALL WEIGHTS 1100-1900 LBS. 57.00-69.00. VEAL CALVES: MARKET STEADY. CHOICE AND PRIME 200-400 LBS. 77.00-98.00; HI GOOD AND LOW CHICE ALL WEIGHTS 63.00-84.00.

FARM CALVES: MARKET STEADY. HOL. BULLS 100-125 LBS. 145.00-180.00; HOL. BULLS 85-95 LBS. 100.00-155.00; HOL. HEIFER CALVES 100-120 LBS. 135.00-165.00; SMALL FRAME 70-105 LBS. 85.00-140.00; SLAUGHTER CALVES ALL WEIGHTS 50.00-72.00.

FEEDER CATTLE: MARKET 2.00 HIGHER. BULLS & STEERS 400-900 LBS. 63.00-84.00; HEIFERS 300-700 LBS. 59.00-78.00.

LAMBS: MARKET STEADY. CHOICE & PRIME 90-110 LBS. 73.00-85.00; LIGHTER LAMBS 100.00-125.00; EWES - HEAVY 19.00-28.00; EWES - LIGHT 35.00-43.00.

GOATS: MARKET STEADY. SMALL 20.00-35.00; MEDIUM 40.00-60.00; LARGE 65.00-90.00.

HOGS: MARKET 1.00 LOWER. 210-250 LBS. 42.00-46.00; 255-300 LBS. 39.00-43.00; SOWS - HEAVY 41.00-43.00; SOWS - LIGHT 34.00-39.00; BOARS ALL WEIGHTS 25.00-31.00.

New Holland Livestock Auction

Lancaster, Pa.
Thursday, March 4, 1993
Cattle Calves Sheep Goats

Today	1057	572	189	57
Last Thursday	1171	572	205	192
Last Year	1207	509	196	137

CATTLE: Slaughter steers steady; slaughter heifers fully steady; cows firm to 1.00 higher; bullocks scarce; bulls 1.00-1.50 lower. Supply included 42% slaughter steers and 44% cows.

SLAUGHTER STEERS: Choice 2-3 few 4 1100-1410 lb 77.85-80.00, couple lots 1035-1085 lb 78.50-78.60; few mixed Choice and Prime 2-3 few 4 1150-1325 lb 80.00-81.35; few Choice 3-4 1050-1400 lb 76.00-77.00; Select and low Choice 2-3 1050-1400 lb 74.50-78.00, few 78.00-78.60.

HOLSTEINS: Choice 2-3 1200-1600 lb 67.00-70.00; couple lots High Choice and Prime 2-3 1300-1500 lb 69.75-70.35; Select 1-3 1200-1500 lb 65.00-67.00; couple lots Standard 1160-1250 lb 63.25-64.00.

SLAUGHTER HEIFERS: Choice 2-3 1050-1200 lb 76.00-77.25; few Select 1-3 1000-1275 lb 71.00-73.50.

COWS: LOW DRESSING BULK HIGH DRESSING Breaking Utility & Commercial 2-3 47.75-52.75 52.75-55.50. Cutter & Boning Utility 1-2 45.50-47.50 47.50-52.00 52.00-54.50. Canner and low Cutter 42.00-45.00 45.00-49.00.

BULLOCKS: Few Select 2-3 1100-1300 lb 65.75-67.75; couple Choice 2-3 1150-1350 lb 69.00-70.25.

BULLS: Yield grade 1 1225-2200 lb 60.50-64.25, couple 66.00-67.75; Yield grade 2 1000-1500 lb 58.00-61.00, low dressing 55.00-58.00.

CALVES: Small supply vealers steady, although bulk of supply sold to return to farm.

VEALERS: Few Choice 280-315 lb 90.00-97.00, couple 430 lb 77.00-79.00; few high Good and low Choice 250-350 lb 75.00-82.00, 80-110 lb 52.00-65.00; Standard and low Good 55-80 lb 42.00-52.00.

RETURNED TO FARM: Bulk 90-125 lb Holstein Bulls 135.00-175.00, few 175.00-182.00; small frame 90-120 lb 105.00-135.00, few 75-90 lb 80.00-110.00; small supply 90-120 lb Holstein Heifers 125.00-165.00; small frame 85-110 lb 105.00-130.00.

SHEEP: Slaughter lambs and slaughter ewes steady. Supply included 30% woolled lambs, 40% New Crop Lambs, with the balance slaughter ewes.

WOOLED LAMBS: Choice 70-105 lb 86.00-95.00.

NEW CROP LAMBS: Choice 30-65 lb 100.00-110.00, few 110.00-120.00.

SLAUGHTER EWES: Utility and Good 30.00-40.00; Yearlings and two-year olds 40.00-55.00.

GOATS: All goats sold by the head. Large 71.00-97.00; Medium 47.00-68.00; Small 26.00-43.00.

Lancaster County Weekly

Lancaster, Pa.
Friday, March 5, 1993
Cattle Calves

This Week	3300	1480
Last Week	3045	1537
Last Year	3261	1402

CATTLE: Slaughter steers steady, instances 50 lower; slaughter heifers fully steady; cows 1.00 lower, instances 2.00 lower; bullocks steady; bulls closed 1.00-1.50 lower. Supply included 43% slaughter steers, 6% slaughter heifers, 36% cows, 4% bulls, with the balance feeders.

SLAUGHTER STEERS: Choice 2-3 few 4 1075-1435 lb 77.75-80.00, few 80.00-81.00; mixed Choice and Prime 2-3 few 4 1150-1425 lb 80.50-81.85, couple Choice 2 82.00-82.50; few Choice 3-4 1050-1400 lb 76.00-77.00; Select and low Choice 2-3 1050-1450 lb 74.00-78.00, few 78.00-79.00; small supply Select 1-3 1050-1350 lb 72.00-74.00.

HOLSTEINS: Choice 2-3 1200-1660 lb 66.50-70.00; High Choice and Prime 2-3 1325-1550 lb 69.75-72.50; Select 1-3 1180-1350 lb 63.75-67.00.

SLAUGHTER HEIFERS: Choice 2-3 960-1265 lb 74.85-77.85; few Choice 2 1135-1250 lb 79.00-80.00; Select 2-3 950-1275 lb 70.00-73.50.

COWS: LOW DRESSING BULK HIGH DRESSING Breaking Utility & Commercial 2-3 47.75-52.75 52.75-55.50. Cutter & Boning Utility 1-2 45.50-47.50 47.50-52.00 52.00-54.50. Canner and low Cutter 41.00-45.00 45.00-49.00.

BULLOCKS: Choice 2-3 1100-1450 lb 68.50-72.00, couple 72.25-73.25; Select 1-3 1100-1400 lb 65.00-68.00.

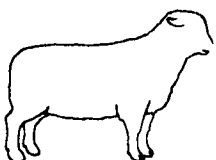
BULLS: Yield grade 1 1250-2200 lb 62.00-67.50, few 67.50-72.00, with eight head early 1600-2005 lb 76.50-80.00; Yield grade 2 995-1500 lb 58.00-63.00, few low dressing 55.00-58.00.

CALVES: Small supply vealers steady; slaughter calves mostly 5.00 higher. Demand good for Holstein bulls and heifers to return to farm.

VEALERS: Few Choice 225-325 lb 90.00-100.00, couple 100.00-110.00; high Good and low Choice 170-350 lb 75.00-95.00, 80-110 lb 52.00-65.00; Standard and low Good 55-80 lb 41.00-52.00.

SLAUGHTER CALVES: Choice 270-400 lb 75.00-90.00; Good 250-650 lb 65.00-75.00.

RETURNED TO FARM: Bulk 90-125 lb Holstein bulls 135.00-182.00; small frame 90-120 lb 105.00-146.00, few 75-90 lb 80.00-110.00. Few 90-120 lb Holstein heifers 125.00-165.00, one lot 85 lb 115.00; small frame 90-110 lb 105.00-130.00, 30 head 65-85 lb 60.00-66.00.



LEBANON VALLEY LIVESTOCK MARKET, INC.

1 mile East of Fredericksburg along Rt. 22
PHONE
JONESTOWN
865-2881

Flea Market Auction every Tuesday at 12:30, Tools, Eggs, Produce, etc.
Buyers & Sellers Welcome

B&R CATTLE CO.
RD 1, Marietta, PA 17547
Office Phone: (717) 653-8164
Specializing in Stockers & Feeders

JOHN BOWMAN
Ph. (717) 653-5728
RON RANCK
Ph. (717) 658-9849

HAY, STRAW & CORN — SALE —
Please Note New Sale Time!
Starting Jan. 3
Sale Starts 10 AM
Every Friday At 10 AM



GREEN DRAGON MARKET & AUCTION
RD No. 4 Ephrata, Pa. 717-738-1117
1 mile North of Ephrata on N. State St.
Out of State Buyers - Cash or Certified Check Only



Open 24 hours a day
365 days a year
(717) 394-2611

AUCTIONS

MONDAY

9:00 A.M. - Slaughter Bulls, Heifers, Steers, Cows
10:00 A.M. - Goats, Veal Calves, Lambs
12:00 Noon - Slaughter Hogs

WEDNESDAY

8:00 A.M. - Slaughter Hogs
10:00 A.M. - Slaughter Bulls, Heifers, Steers, Cows
11:00 A.M. - Veal Calves, Lambs

FRIDAY

11:00 A.M. - Stocker and Feeder Cattle

SATURDAY

8:00 A.M. - Slaughter Hogs

Next Feeder Cattle Sale
Friday, March 12 - 11:00 A.M.

LANCASTER STOCKYARDS, INC.
1147 Litz Pike, Lancaster, PA 17601
Incorporated in 1895 - Serving The Community for 98 Years

VINTAGE SALES STABLES, INC.

SALE TUESDAYS

10:30 A.M.
SLAUGHTER CATTLE AUCTION — STEERS, BULLS, HEIFERS, COWS, FEEDER CATTLE

7:30 P.M.
CALVES, SHEEP, GOATS
* GET CALVES IN EARLY — OUR STATE GRADER STARTS AT 1:00 P.M.

Selling Feeders Every Tuesday
At Approx. 2 PM

L. ROBERT FRAME, SR., PRESIDENT
GLENN S. FRAME, MGR.
BUS (717) 442-4181 BUS (717) 768-8204
HOME (215) 458-8518
IRWIN MARTIN, FIELD REP. (717) 733-7434
KENNETH E. HERSHEY, FIELD REP. (717) 442-4874

TRUCKING SERVICE
AVAILABLE - LOCAL & LONG DISTANCE
(RT. 30, 10 MILES EAST OF LANCASTER IN PARADISE, PA)

