

chini sml-med 9.00-10.00 mostly 10.00 med 6.00-7.00 Yellow Straightneck med fr cond 6.00-8.00 MX Zucchini sml-med 10.00 med 8.00 26 lb ctns MX Zucchini med 9.00-10.00 ---SWEET POTATOES: MARKET ABOUT STEADY CURED 40 lb ctns NC U.S. One Jewels med 8.00-8.50 fr qual 5.00 occ 6.00 jbo 5.00 occ 6.00 --- TOMATOES: MARKET ABOUT STEADY 25 lb ctns FL 85% U.S. One or Better pink to light red xlg 5.50-6.50 mostly 6.00 red 5.00 fr qual 5.00 lge 6.00-7.00 fr cond loas 5.00 med 6.00-6.50 fr cond loas 5.00 Vine Ripes pink to light red xlg 4.50 fr qual 3.00-4.00 Local Repack 85% U.S. One or Better xlg 9.50 lge 9.50 med 9.50 flts 2 lyr MX Vine Ripes light red to red 5x6s fr cond 2.00 --- TOMATOES, CHERRY: MARKET ABOUT STEADY flts 12 1-pt bkt FL fr cond 4.00 MX fr cond 7.00 --- TOMATOES, PLUM TYPE: 25 lb ctns FL red 8.00 MX light red to red 8.00 fr cond 5.00 ---TURNIPS: 25 lb sks NJ Purple Top 5.00 ---VEGETABLES OTHER: MARKET STEADY 5 lb ctns PA Alfalfa Sprouts 4.50-5.00 ctns 12 4-oz pkgs PA Alfalfa Sprouts 4.00-5.00 3 kg ctns GU Radicchio 10.00-11.00 IT Radicchio 8.50-9.00.

13.00-15.00 few 12.00 med 11.50 White MX 50 lb sks jbo 20.00-22.00 fair cond 15.00 OLD CROP Yellow Globe Type NY 50 lb sks med 8.00-10.00 mostly 9.00 some loas 7.00 fair cond 5.00 Spanish Hybrid CO 50 lb sks jbo 11.00-12.00 ID/OR 50 lb sks jbo 11.00-12.00 mostly 11.50-12.00 WA 50 lb sks jbo 11.00-12.00 Red ID/OR 25 lb sks jbo 9.00-9.50 NY 25 lb sks jbo 7.00-9.00 mostly 7.00-8.00 med 6.00 --- POTATOES: MARKET ABOUT STEADY US#1 SZ A WASHED OR BRUSHED UNLESS OTHERWISE STATED NEW CROP Round Red FL 50 lb sks 13.00 sz B 16.00 OLD CROP Russet Burbank ID bld 10 5-lb flmbgs non sz A 7.50-8.00 50 lb ctns 70s 14.50-15.50 mostly 15.00-15.50 few 16.00 80s 14.00-15.50 few 16.00 90s 10.00-11.50 mostly 11.00-11.50 100s 8.50-10.00 mostly 9.00 Norkotah CD Prince Edward Island CDOne 50 lb ctns 70s 9.00 80s 9.00 MI 50 lb ctns 90s 8.00 WI bld 10 5-lb sks non sz A 5.00-5.50 50 lb ctns 90s few 8.00 Round Red MN/ND 50 lb sks 7.50-8.00 sz B fair appear 9-9.50 Round White CD Prince Edward Island CDOne 50 lb sks 4.75-5.00 lge 5.25-5.50 LI 50 lb sks lge 4.75-5.00 ME 50 lb sks lge 4.50 NY 50 lb sks 4.00.

CANADA FRESH COWS 675.00-1285.00, SPRINGERS 835.00-1100.00.
CANADA FRESH COWS 950.00-1250.00, SPRINGERS 875.00-1090.00.
CANADA FRESH 900.00-1425.00, SPRINGERS 1100.00-1325.00.
JERSEY COWS FRESH 525.00-800.00, 1 AT 1650.00.
LOCAL COWS FRESH 1025.00-1275.00, SPRINGERS 750.00-1085.00.
OPEN BREEDING AGE HEIFERS 550.00-725.00.
SPRINGING HEIFERS 810.00-1150.00.
SHORTBRED HEIFERS 700.00-805.00.
SMALL OPEN HEIFERS 440.00-510.00.
BULLS 550.00-875.00.

1400-1600 LBS. 72.00-75.25; SELECT 66.00-71.00; STANDARD HOLSTEINS 55.00-59.00.
FED HEIFERS: CHOICE 1050-1250 LBS. 73.00-76.25; SELECT 66.00-71.00; CHOICE HOLSTEINS 1200 LBS. TO 64.50; STANDARD 55.00-60.00.
VEAL CALVES: CHOICE, NONE; CULLS 85-110 LBS. 62.00-70.00; 50-80 LBS. 54.00-64.00; WEAK/ROUGH 50.00 DOWN.
FARM CALVES: HOLSTEIN BULLS #1 95-120 LBS. 155.00-178.00; FEW 85-90 LBS. 120.00-150.00; SMALL FRAME 75.00-110.00; HOLSTEIN HEIFERS, FEW OFFERED; BEEF X BULLS AND HEIFERS TO 150.00.
BUTCHER HOGS: NO TOPS OFFERED; US#2&3 215-260 LBS. 41.50-43.00; 270-290 LBS. 40.00-41.00; 200-215 LBS. 40.00-41.50; 300-350 LBS. 39.00-41.50.
SOWS: 300-500 LBS. 37.00-39.50; THIN 34.00-36.50.
BOARS: 400-600 LBS. 31.00-32.25.
STOCK CATTLE: 300-500 LBS. 80.00-92.00; 500-700 LBS. 75.00-85.00; 700-800 LBS. 65.00-77.00; 900-1050 LBS. 69.00-73.00.
HEIFERS: 300-500 LBS. 74.00-84.00; 500-600 LBS. 69.00-78.00; 600-700 LBS. 65.00-73.00.
BULLS: FEW 400-600 LBS. TO 84.00; 600-700 LBS. 68.00-75.00; 2 CHAROLAIS 850-1000 LBS. AT 76.50; 3 LIMOUSIN 900-1200 LBS. 63.00-66.75.
DAIRY REPLACEMENTS: NO FANCY OFFERED; LARGE FRESH AND SPRINGING 875.00-985.00; MEDIUM 750.00-875.00; SMALL TO 675.00;

HOLSTEIN HEIFERS 200-300 LBS. 80.00-99.00; 500-700 LBS. 67.00-81.00; 700-950 LBS. 55.00-64.00.
SHEEP: 100-200 LBS. 30.00-44.00.
GOATS: FEW TO 55.00.
LAMBS: STRONG DEMAND! CHOICE 90-100 LBS. 85.00-99.00; 80-90 LBS. TO 90.00; FEW GOOD 100-120 LBS. TO 75.00.
PIGS AND SHOATS: NONE OFFERED.
TESTED STOCK BOARS: 200-250 LBS. TO 36.00.
NEXT WED., MARCH 10, SPECIAL FEEDER CATTLE SALE, 7:30 P.M. PROMISED: 6 ANGUS STEERS 600-700 LBS.; 1 RED LIMOUSIN BULL WITH PAPERS, 2 1/2 YRS. OLD, 1400 LBS.

**Philadelphia
Potato & Onion**

Philadelphia, Pa.
 Wednesday, March 3, 1993
 ONIONS AND POTATOES
 ---ONIONS DRY: MARKET ABOUT STEADY US#1 OR GENERALLY GOOD QUAL AND COND UNLESS OTHERWISE STATED. NEW CROP Yellow Grano MX 50 lb sks jbo

**New Holland
Dairy**

New Holland Sales Stables
 Wednesday, March 3, 1993
 Report supplied by auction
 DAIRY COWS 135; HEIFERS 89 AND 10 BULLS. MARKET STEADY.

**Four States
Livestock**

Hagerstown, Md.
 March 3, 1993
 Report supplied by Auction
 SLAUGHTER COWS: STEADY PRICES. UTILITY 48.00-52.00; HIGH DRESSING TO 54.90, 1 AT 55.75; CANNERS 44.00-48.00; SHELLY 44.00 DOWN.
 BULLS: YG#1 2245 LBS. AT 61.00; YG#2 1200-2000 LBS. 57.00-58.00.
 FED STEERS: NO HIGH CHOICE OR PRIME; LOW DRESSING TO 77.00;

**Shenandoah
Valley
Livestock**

Harrisonburg, Va.
 Feb. 27, 1993
 Report supplied by auction
 STEERS: M&L-1 300-500 LBS. 90.00-99.00; 500-700 LBS. 82.00-90.00; 700-1000 LBS. 74.00-75.50; HOLSTEIN 300-500 LBS. 61.00-79.00.
 FEEDER BULLS: M&L-1 500-700 LBS. 85.00-92.50; 500-700 LBS. 75.00-82.00.
 HEIFERS: 500-700 LBS. 72.00-79.00; 700-1000 LBS. 65.00-73.00.
 STOCK COWS: BABY CALVES BY THE HEAD, 50.00-100.00-150.00, CWT. 100.00-135.00.
 SLAUGHTER COWS: HIGH DRESSING 51.50-53.00; UTILITY AND COMMERCIAL 46.50-51.50; CANNERS AND CUTTER 38.50-46.00.
 SLAUGHTER BULLS: 59.75.
 LAMBS: BLUE O HIGH CHOICE AND PRIME 75.00; RED O CHOICE 84.00; SLAUGHTER EWES 20.50-28.50.

**WHO'S CONTROLLING YOUR BROILER HOUSE
INLET WHEN YOU ARE NOT THERE?**



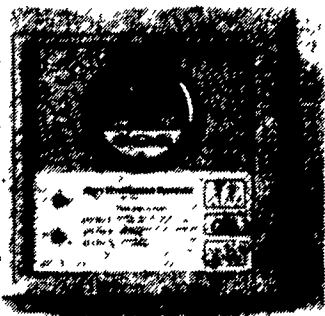
WE WILL DO IT FOR YOU!

**LET HERSHEY EQUIPMENT CO. INSTALL
THE PRO II INLET CONTROLLER FROM**

Agri Ventilation Systems, Inc.



Building Ventilation Controllers with the Grower in Mind



- ★ REGULATES AIR INLET DOORS
- ★ MAKES THE BEST USE OF YOUR FAN POWER
- ★ MAINTAINS MORE CONSISTENT AIR QUALITY
- ★ HELPS YOUR BIRDS GET PEAK PERFORMANCE

**HERSHEY
EQUIPMENT CO.**

255 PLANE TREE DRIVE
 LANCASTER, PA 17603
 (717) 393-5807

If It's Worth Your Investment, Trust It To Hershey

**Replace Your Bulbs - Save Electricity
FLUORESCENT LIGHTS**



**PRICES AS
LOW AS
~~\$6.99~~
NOW
\$5.95**

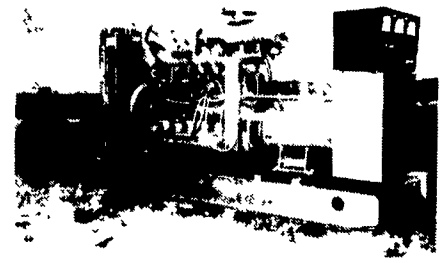
- Save Energy Replaces up to 75 watt incandescent
- Easy Installation
- Economical Lasts 10 times longer than standard bulb
- Fewer Lamp Changes
- Lower Maintenance Cost
- Durable Polycarbonate Housing
- 45 000+ Hour Ballast
- 10 000+ Hour Lamp Life
- Air Cooled
- Water Resistant Ballast
- 120 Volt
- Ratcheted Brass Socket
- Medium Base
- Starting Temperature 0
- Made in USA

MODEL	WATTS	INCANDESCENT EQUIVALENT	INITIAL LUMENS
3000	5	25 WATTS	280
3200	7	40 WATTS	400
3500	9	60 WATTS	600
3700	13	75 WATTS	800
3900	22	90 WATTS	1300

Call Toll Free 1-800-673-2580

SOLD AND SERVICED BY:
Northeast Agri Systems, Inc.
 FLYWAY BUSINESS PARK
 139 A West Airport Rd.
 Lititz, PA 17543
 (717) 569-2702

**MARTIN
MACHINERY**



GENERATORS

Sales ★ Service ★ Rentals
 * Complete Generator Systems
 * PTO * Portables * 2-1600 KW
 "We Service It If You Have It
 And Sell It If You Need It"
 34 W. Mohler Church Rd.
 Ephrata, PA 17522
 Tel: 717-738-0300
 Fax: 717-738-4329