



NEW EQUIPMENT SPECIALS

Kuhn FC 300 GDR Disc Conditioner, 10'
 Kuhn 7301 24' Folding Rake
 Kubota M8580, 4WD, Hyd. Shuttle, 80 HP w/Loader
 Kubota L5450, 4WD, Hyd. Shuttle, 50 HP w/Loader
 Kubota 2050, 4WD, 25 HP, Turf Tires

NEW HESSTON EQUIPMENT

4570 Baler w/Thrower
 4900 Big Square Baler
 1340 12' Center Pivot Disc Conditioner
 1120 9' Windrower, Stub Guard
 530 Round Baler, 500 Lb.
 540 Round Baler, 1000 Lb.

NEW NEW IDEA SPREADERS

3622, 220 Bushel 3626, 260 Bushel

USED EQUIPMENT

Hesston 4600 Baler w/Thrower
 Vermeer 504C Round Baler
 Patz Round Bale Chopper, Like New
 1953 Oliver 66, WF
 NH 679 Tandem Spreader, Rebuilt
 IH 84 Hydro w/2250 Loader
 Hesston 666 DT, 60 HP w/Loader, 2000 Hours
 III 284 Dsl. w/Woods Mower
 Bush Hog 2615 15', 1000 RPM Mower
 Bush Hog 1315 15' Wing Mower
 Kuhn FC 250, 8' Disc Flail Conditioner
 Kuhn GMD 77, 9', 3 Pt. Mower
 Oliver 548, 6X, 16", SAR Plow
 Donahue Windrower Trailer
 Goosen Stationary Bale Chopper
 (2) NH 479 Haybine
 Hesston PT7 Windrower
 NI 3639 2 Beater, 390 Bushel Spreader

LAWN & GARDEN

Grasshopper 1622D, Diesel, 60"
 Steiner 220, 60", 21 HP Mower

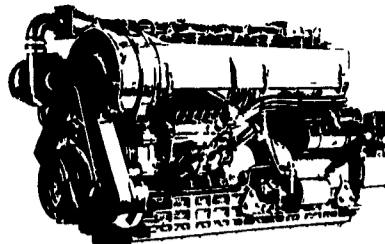
STOLTZFUS FARM SERVICE

Cochranville, PA 215-593-2407

ATTENTION FARMERS

If you have deteriorating concrete masonry or stone walls, have it repaired with GUNITE®

For information and estimates call **Martins Silo Repair**
 (215) 445-9834



NEW

VM Model SUN 6105T 150 HP \$7,800

MILLER'S REPAIR
 1 Mile North of Bird In Hand
 8 Miles East of Lancaster
 Ph. 717-656-6109



1983 Ford 2610 Diesel, PS, Diff Loc, LPTO, Excellent Condition
 215/445-6024

Leaman Tractor Parts

329 Brenneman Rd.
 Willow Street, PA 17584
 (Lancaster Co.) 717-464-2874

(Turn Left on Brenneman Rd. from 222 S at Refton)



TORQUE AMPLIFIERS & CLUTCHES

- ★ New Wider Heavy Duty Super Sprag 1-1/32" Wide
- ★ 5 Yr. Warranty Against Sprag Failure
- ★ Price \$695.00

* 5 yr. - 100% parts & labor against sprag
 * 2 yr. - 100% parts & labor on remainder of unit
 Our standard heavy duty TA is still available at \$645.00 and carries a * 2 yr. - 100% parts & labor warranty.
 * Certain restrictions apply and there will be a maximum labor pay-out of \$450.00
 We also have units & parts available to rebuild old style TA's, including ramp & carrier sets.
 NEW price on ramps & carriers - \$200.00

COMBINE PARTS

Final drives for 6620 Hillside, 6600, JD 7720, 8820
 We Also Have unloading augers, straw walkers and other various parts for JD and IH combines
 1) MF 750 complete, but will sell any part
 IH 815, for parts

QUALITY USED PARTS

We specialize in IH tractors but we also have Case, AC, JD, Oliver, Massey and White tractors in our inventory.

Recent Additions To Parts:

- IH 1066, 1086, 886, 560, 966, 1468, 1566
- IH 2424, 460, 706, 806
- IH 404 986, 884, 826, 856, 606, 2606
- IH 1066, IH 340, 1981 Model 986
- IH 815 Combine
- JD 6620 Sidehill - MF 750

COLLECTORS

JD 8020 serial #1074, complete, running cond
 MH 55 Diesel
 We have coming in several JD Hi-crops Call for models and serial numbers
 1911 Minneapolis 20-45, 1 of 4 known to exist, older restoration \$13,000
 JD G low-Radiator
 Oliver 60 high crop, very rare, needs engine

PROJECT TRACTORS

IH 424 gas, 3 pt. WF, needs motor work
 JD 620 gas, very good, needs motor work
 JD 730 diesel, electric start, 3 pt., WF, (engine stuck); good project
 Case 430 WFE, ~~SOLD~~ needs engine

USED TRACTORS

IH 1568 cab, air, duals, very nice condition
 IH 1486 cab, air, new TA, very nice
 IH 1066 cab, air, black stripe w/new TA, 18x38 tires, excel. condition
 IH 1066 2 post ROPS, black stripe w/recent engine work, very good condition
 IH 4156 cab w/air, 18x34 tires, 160 HP, very good condition \$7,500
 IH 1256 3 pt., dual PTO, good condition
 IH 856 w/Hinicker 1300, cab, WFE, 38" tires, good condition
 IH OS6, very original condition
 JD 730 gas, 3 pt., ~~SOLD~~ very good condition
 JD 730 diesel, WFE, 3 pt., electric start, very good condition
 JD 1050 MFD #75 loader, 900 hrs., excel. condition, ~~\$10,200~~ \$9,950
 AC 7020 cab, 3 valves, power director transmission, 4000 hrs., \$7,500
 Complete MFD axle to fit JD 5020
 Complete MFD axle to fit 06 & 56 series IH tractors
 Complete EMCO MFD axle to fit 5288 series Heagy sprayer model 647, w/318 Chrysler engine, 4WD hydro, low usage, weathered \$4,500

ENGINES

IH D-282 fits 560, 656, 706
 Perkins 640 cu. in. V8, short block or long block
 Cummins KTIA (1155), one new block and 4 recon heads
 Cummins 290 small cam, needs rebuilt

USED TRACTORS

"Will buy or trade tractors"

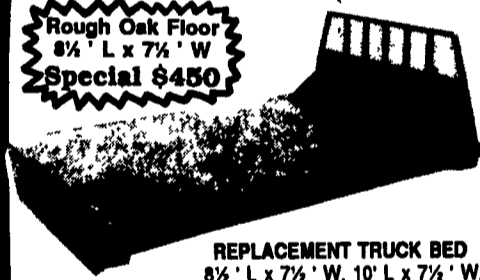
- JD 4850, 4WD, PS, SGB, Wts.....\$43,500
- JD 4450, PS, MFWD, SGB, loaded.....\$33,750
- JD 4240, SGB, QR Trans., 1982, sharp\$18,500
- JD 2940 SGB, 2 hyd. hi/lo, original.....\$16,600
- JD 4040 SGB, QR, Trans, 2 Hyd.\$15,500
- JD 4430 SGB, 1976, QR trans.....\$12,900
- JD 2940 hi/lo 2 hyd., orig, nice.....\$11,900
- JD 4230 QR, new tires.....\$10,800
- JD 2550 ind. PTO 38" rubber, nice.....\$10,700
- MF 2745, cab, air, 2046 hrs., duals.....\$10,500
- JD 2840, 2 hyd. hi/lo, original.....\$9,700
- JD 4320 overhauled & painted.....\$9,500
- JD 1640 SGB, Same as 2350.....\$9,400
- JD 2440, 1982 ind. PTO, nice.....\$9,200
- JD 4020 side console, SR, ovrhid, nice \$9,200
- JD 4000, 1972, WF, Good Rubber, Nice \$9,000
- JD 4020 side console, WF, original.....\$8,500
- JD 2240 diesel, hi/lo, ind PTO.....\$7,900
- JD 4020, 1968, SR, new paint, WF.....\$7,200
- JD 4020, PS trans, 1976 WF, fair.....\$7,000
- JD 2240, ind. PTO, 50 HP, nice.....\$6,800
- JD 3020 diesel WF, nice.....\$6,700
- JD 3020 diesel, WF, SR trans, original..\$6,500
- JD 2130 hi/lo, ind. PTO Good rubber....\$6,500
- JD 830 diesel 1160 org. hrs., 3 cyl.....\$6,400
- JD 2030 dsl., ind. PTO, 60 HP.....\$6,300
- JD 4010 Diesel, WF, 38" rubber.....\$6,200
- JD 125 dsl. skid loader, 2100 hrs.....\$6,200
- JD 3130, 80 HP, same as 2840.....\$6,000
- JD 2020, dsl, hi/lo, ind PTO, nice.....\$5,800
- JD 2120 diesel, hi/lo, 60 HP, nice.....\$5,500
- JD 1120, diesel, 50 HP.....\$4,000
- Ford 2000 gas late mdl 1429 orig. hrs.. \$3,500
- JD 2010 gas, NF, nice original.....\$3,000
- Ford 9N w/Sauder Idr., nice.....\$2,000
- Wide front ends for JD 4020, brand new\$1,300
- TO4 Air Research Turbo For JD 2630.....\$800
- Yellow roof roll bar f/JD 4020.....\$650
- 18.4x34 JD axle duals for 4020.....\$600
- Yellow roof roll bar f/JD 1530.....\$600
- 16x9x38 snap on duals.....\$500
- JD 4020 or 3020 toplinks brand new \$150 ea.

Zimmerman Elevators, Hay Tedders
 Wagon Gears & Forage Wagons
 Farmco Metal Feeder Wagons, Bale
 Bodies & Country Boy Gravity Bins
 JD Front & Rear Weights J&L Hay Savers

Reiff Farm Service

275 Goodhart Road, Shippensburg, PA 17257
 Interstate 81 Exit 10 174 East, Goodhart Road R
 (717) 532-8601 Can Finance

Rough Oak Floor
 8 1/2' L x 7 1/2' W
 Special \$450



REPLACEMENT TRUCK BED
 8 1/2' L x 7 1/2' W, 10' L x 7 1/2' W,
 12' L x 7 1/2' W
 Wood or Steel Floor

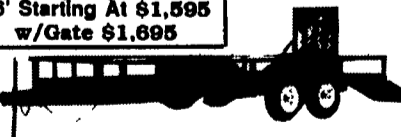
Also Available in 4'x8' and 5'x8'

12' Starting At \$995
 w/Gate \$1,150



UTILITY (TILT OR GATE MODEL) Sizes: 5'x8',
 5'x10', 6'4"x10', 6'4"x12', 3000# GVW

16' Starting At \$1,595
 w/Gate \$1,695



UTILITY WITH GATE - SIZES: 12'x76", 14'x76",
 16'x76" 18'x76", 18'x81", 7,000# GVW, 20'x81"
 12,000# GVW

Also Available in Car Haulers 16', 18' 7,000# GVW



FLAT BED: Sizes 16'x76", 18'x76", 18'x81",
 8,000# GVW, self storing 80" long ramps

STARTING AT \$695.00



Car Dolly

International Farm Equipment

- 1 & 2 Bottom Plows
 - Discs 4' - 8'
 - Blades 5'-8'
 - Box Blades 4'-8'
 - Stone Rakes 5'-8'
 - Post Hole Diggers
 - 1 Row Cultivators
 - Dirt Scoops
 - Boom Poles
 - Rear Carriers
 - Chipper-Mulcher
 - Fertilizer Spreaders
 - Concrete Mixers
 - Field Cultivators
 - Potato Plows
 - Hay Rakes & Tedders
 - Rotary Mowers 3'-11'
 - 4'-7 1/2' Finish Mowers
 - Bale Carriers
 - Sickle Mowers
 - Rototillers
 - Log Splitters
 - Truck Beds - 8' to 12'
- Over 300 Trailers In Stock
 Starting At \$495.00
 50 Different Models
T-Plates
 DEALERS WANTED
 Financing Available

HIGHWAY HYDRAULIC DUMP



10' Starting At \$2,695

ALSO AVAILABLE IN DROP AXLE IN 12' TO 16'



CONSTRUCTION (LOW DECK) 16'x76",
 18'x81", 20'x81" 8,000# or 12,000# GVW

Starting At \$3695 w/4' Adj. Tail



GOOSENECK SIZES: 20'x8', 12,000# GVW,
 24'x8' 18,000# GVW.

Also: 18'x8' 6 Ton, 20' to 24'x8' 9 & 10 Ton



DECK-OVER CONSTRUCTION
 16'x8' 7000# GVW \$2,695
 18'x8' w/Tail 10,000# GVW \$2,995

KUTZ FARM EQUIPMENT, INC.

Pine Grove, PA (717) 345-4882

8 AM-5 PM MONDAY TO FRIDAY
 8 AM-12 SATURDAY OR BY APPOINTMENT