

NH 718 chopper, 2 heads, excellent, all inside, \$4700. 804-784-3131.

NH 791 manure spreader, 2 beater, 400 bu., \$2,500. (301)898-7426.

NH #7 silage wagon w/ extra high sides, nice, \$1000; NH flail spreader, single axle, real nice, \$1000. Franklin Co. 717/369-2138 No Sunday calls.

NH Super 717 chopper, pickup and corn head, \$900. (301)898-7426.

NI 324 super sheller picker, 2R, excellent condition, must sell, \$2500 OBO; Grain dryer. 201-875-9691.

NI 704 Uni-System w/ Diesel Motor. \$3500. 717-862-3433.

NI 717 Uni-system combine, 713S grain platform, good condition. 717/933-4459.

OLIVER 1750, gas, WFE, clean original tractor, \$3,200. 410-833-9091

Oliver 1755 Diesel with 2100 original hours, 16.9-38 tires, good condition, \$5600; 8 tooth Athens chisel plow, good, \$1000. 215/932-0221.

Oliver Superior grain drill, \$500; New Idea side delivery rake #400, \$400; another rake, \$300; fast hitch subsoiler, \$100. All \$1000. 215/847-5764.

PIXALL BEAN & Corn harvesters. Used machines in stock. Bought & sold. Other brands available. MARKET FARM IMPLEMENT 814-443-1931.

PLOW AC 4 btm, roll-over, \$1,000. 410-833-9091

RECONDITIONED HAY EQUIPMENT: Brillion 8' packer/seed, \$1750; NH 56 & 55 Hay Rake; Nicholson Hay Tedder. Thom Wheary, 717/687-0102.

Scoop-mobile 4WD, articulated loader, 2 yd. bucket, gas engine, power shift, \$2,000. After 6pm, (908)362-9521.

Shaver Post Drivers: HD8 \$1095, HD10 \$1595. Taneytown Farm & Hardware, 410/751-1500.

SKID STEER MELROE BOBCAT 743, 1985, 2,800 hrs., \$6,300. 410-833-9091

Snow Blades for: Farmall Cub; SA-140 Super C, \$300/each; Ford 1700-1900, \$200; Myers Snow Blade, 7' w/ hydraulics; Ford Snow Blowers for compact diesel, all \$200 OBO. Thom Wheary, 717/687-0102.

Stoltzfus W-Chain sower spreader, 10' SS box, 30' SS booms, hydraulic drive, foam markers, closed top, excellent condition, \$8500. 216-355-5641.

Straight Knife grinder for balers-harvesters. Good operating condition; M&W Turbo kit for Ford 1W-10, used 6 months, \$750. Symonds Ford Service, Woodhull, NY, 607/458-5200.

LOADER ATTACHMENT JD 145 w/valve & wide bucket, \$2,000. 410-833-9091

LOADER TRACTOR IH 444 w/2050 loader, \$4,000. 410-833-9091

LOADER TRACTOR DEUTZ 6206, 4x4 w/GB800 loader, runs excellent, \$9,500. 410-833-9091

LOADER TRACTOR JD 2030, gas w/145 loader, very solid, \$6,500. 410-833-9091

LOADER TRACTOR IH 484 w/2250 loader, 3,100 hrs., rebuilt motor, \$5,500. 410-833-9091

White 598, 4 bottom plow, variable width, \$4,200. IH 1066 cab/air, 20.8x38 wheels, nice, \$10,200. (717)656-6109.

1979 Lockwood XL Potato Harvester w/Dahlman M-table for clod removal
Haines 48" Potato Washer \$2,200
(215) 286-9510

Wire Corn Crib. 8' 6" portable auger w/motor. Sibly 12 hole hog feeder. 40' transport, 6" PTO driven grain auger, Robert McBeth, call after 5pm, (717)677-7282.

WOOD CHIPPER WW, 3 pt., 10 hrs. total use, \$1,200. 410-833-9091

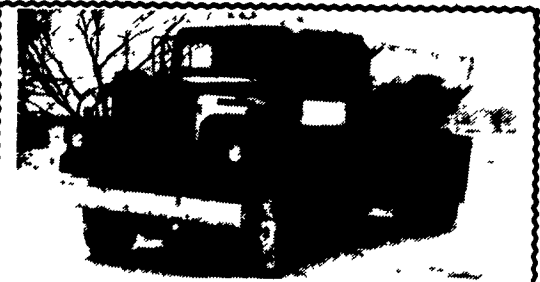
M2 Hydro, 1300 separator hrs., 6-30" and grain head, \$15,900. Finance. Larry Stalter the "Combine Man". 1-800-248-2151.

MANURE SPREADER MF 205, excellent w/litter pan, \$1,000. 410-833-9091

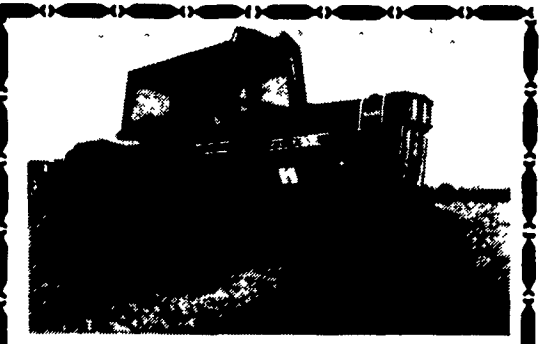
Manure pump-day lagoon, 24' w/hydraulic controls, \$1325. 301/898-3233.

IHC 710 5X reset plow
NI 706 Unisystem 717 combine
Case 881 field chopper and windrow pickup
Case 1150D track loader
Case trencher w/backhoe & blade
Joy 150 CFM diesel air compressor and bits
Fruehauf 5th wheel trailer, 20 ton, 20'

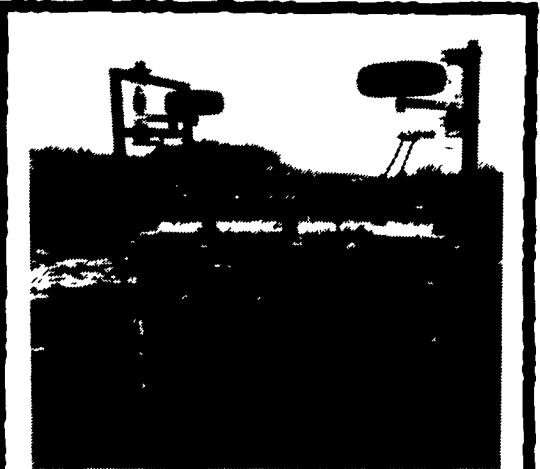
304/263-9801



- 1) 11' Spreader Box on White With 903 Cummins, Good For Lime or Litter - \$4,900
 - 2) 656 IH Gas, Wide Front, Overhauled Nice Tractor, 2 Point Hitch
 - 3) TL 20 Allis Chalmers, Rubber Tire Loader \$4,500
- Call (717) 352-3213 No Sunday Calls



1466 Black Stripe, CAH, Duals \$5,200
410-833-9091



26 FT. FOLD UP CHISEL
Can Be Converted to Soil Saver
Or 12 Ft. Pull Type Chisel
\$1,500
410-833-9091

Cooper's Mfg. & Equip. Corp.
Salunga, Pa. 17538
717-898-2259

Hyster 15,000 Lb. Forklift, Gas, PS \$3,500
Gallon 8-12 Ton Tandem Roller, gas, Runs Good..... \$2,850
Trail-R-Pac portable trash compactor, 6 yd. capacity, gas \$2,750
Gallon 104 Grader, Cummins Power, Cab, Good Condition..... \$5,500
Log Skidders, JD and Tree Farmer
Tow Brooms Engine Power.. \$2,750
Athey and Pettibone Belt Loaders
From..... \$2,500
Gas or Diesel - Some As-Is And Some Rebuilt
Gallon 9 Wheel Rubber Tired Roller, IH Gas, TQ, Asking \$3,750



KUTZTOWN Produce Auction, Inc.
RD 4, Box 4153-A
Fleetwood, PA 19522
215-663-7161

FARM EQUIPMENT CONSIGNMENT AUCTION TUESDAY, MARCH 9th
At 10:00 AM

Farm Machinery, Tools, Building Supplies, Small Items. Accepting Consignments Until Monday, March 8th at 4:00 P.M.
AH-00073L

DIRECTIONS: From Reading 222 N. to Kutztown Exit bear right then right onto Oakhaven Road to Stop, then left. From Allentown 222 S. to Virginville Exit, turn left to Stop, then right, then second left onto Oakhaven Road, to Stop then left. (Follow KPA Signs).

JD 8300 grain drill, 21 double disc, 7" spacing, has grass seeder boxes, depth gauge press wheels, rear boom sprayer
no fertilizer boxes excellent condition
\$5,000 firm
(717) 286-2537

1988 Model 385 Case IH Tractor,
35 PTO hp,
3 cylinder diesel,
8 speeds forward,
4 reverse,
14 hours, like new
\$8,995 OBO
717/285-4857



IH 484
w/2250 Loader, New Engine, Runs Good
\$5,500
410-833-9091

TRACTOR REPAIRS

- We Have Experienced Ford Tractor Mechanics That Specialize In Ford Tractor Repairs -
- We Specialize In Ford Tractors And Have Since 1921
- Call For Quotes

717-949-2000



KELLER BROS.

RD 7 Box 405
LEBANON, PA

TRACTORS

JD 4255, cab, air, quad range, 20.8x38 tires, heavy 3 pt. hitch, 700 hours, like new
MF 360-2 w/cab, less than 300 hours
MF 670 4 WD, cab & air, like new
MF 690 4WD, cab, air, low hours
MF 3545 4WD, cab, air, 20.8x38 tires, 950 hours, excellent condition
MF 3660 2WD, cab, air, 20.8x38 tires, 60 hours
IH 886 4 post ROPS, excellent condition

TILLAGE

Brillion Soil Finisher, New
Dyna drive power harrow 15', good condition
Krause 1577 18' bifold disc harrow, excellent condition, new blades
MF 880 5X hydraulic reset trailer plow, like new
Kewanee 12' offset disc harrow

PLANTERS

IH 800 6RN planter w/liquid fertilizer
Moore (GT) 10' no till drill
JD Model 750 15' no till drill, all options, planted less than 500 acres
MF 33 15 run grain drill

SKIDSTEER LOADERS

(2) Gehl 4610 Diesel
Gehl 3610 Diesel
Gehl 3510 Gas
Hydromac 9C Diesel

HAY EQUIPMENT

Hesston 1091 Mower Conditioner, excellent condition
NH 1499 12' self-propelled mower conditioner, diesel, cab & air, 650 hours, excellent condition

Longenecker's Inc.
Williamsburg, PA 16693
814-793-3731

MID STATE TIRE CENTER

WAGON GEARS
12 Ton.....\$1,290
10 Ton.....\$700
8 Ton.....\$625
6 Ton



GALAXY
12 4x28 6 ply \$175
13 6x28 6 ply \$200
16 9x28 6 ply \$255
18 4x30 8 ply \$305
18 4x34 8 ply \$365
12 4x38 6 ply \$200
13 6x38 6 ply \$225
15 5x38 6 ply \$265
18 4x38 8 ply \$400
20 8x38 8 ply \$495



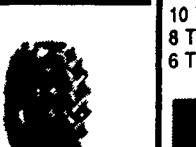
FIRESTONE
19Lx16 1 10 ply \$275
750x22 \$165
13 6x26 6 ply \$235
18 4x30 6 ply \$285
30 5Lx32 8 ply \$890
18 4x34 6 ply \$355
20 8x34 8 ply \$545
18 4R34 8 ply \$465
15 5x38 6 ply \$275
20 8x38 8 ply \$539
20 8R38 10 ply \$765
20 8R42 10 ply \$785



GOODYEAR
13 6x24 8 ply ... \$290
16 9R28 10 ply ... \$375
14 9x28 6 ply ... \$195
16 9x30 6 ply ... \$265
18 4x30 6 ply ... \$300
18 4R38 ... \$490
20 8R38 ... \$685
GEN TIRE
23 1x34 8 ply ... \$690
24 5x32 10 ply ... \$725
30 5Lx32 10 ply ... \$950
28Lx26 10 ply ... \$890
18 4x38 8 ply ... \$425



ARMSTRONG
14 9x24 6 ply \$219
16 9x24 6 ply \$239
18 4x26 90% \$275
18 4x34 R/C \$495
20 8x34 R/C \$690
14 9x38 6 ply \$275
18 4x28 6 ply \$350
(1)24 5x32 12 ply..\$725
30 5Lx32 12 ply..\$1,090
18 4R34 90% ..\$350
18 4R38 \$485
20 8R38 8 ply \$665
20 8R42 \$765



ALLIANCE
9 5X24 \$95
16 9R30 8 ply. . \$375
16 9R34 8 ply ... \$400
18 4R34 10 ply ..\$425
18 4R38 10 ply ..\$425
20 8R38 10 ply \$625
Power Mach
23 1x30 \$590
WE MOUNT TIRES
IN N.Y. & PA
Duals, Wheels & Rims for:
Manure Spreaders
Wagons
Tractors

Call For Sizes Not Listed | **1-800-548-1884 or 315-539-2764**