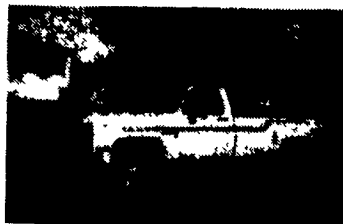




1990 GMC SL 3500, Crew Cab, 350 FI, Auto, PS, PB, Air, AM-FM, Dual Tanks, 9,000 GVW, 24,000 Miles, Local 1 Owner, Red & White, Ex. Cond.

\$13,900



88 Chevy K30 4x4 Dually, 350 FI, Auto, PS, PB, Air, AM-FM Lock-Out Hubs, 54,000 Miles, 1 Owner, White

\$10,500



1988 Dodge D250 HD, 1/2 Ton, 4x4 With 8 Ft. Midwest Stake Body Dump, 360 Auto, PS, PB, AM-FM, Red, Ex. Cond.

\$7,900



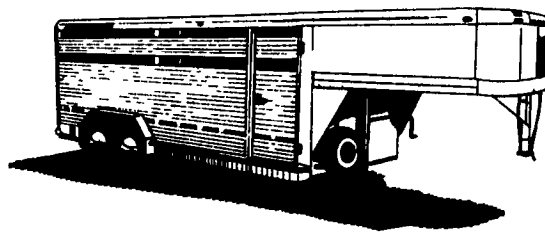
1987 Ford F250 4x4, 300 EFI, 4 Speed, PS, PB, AM-FM, Dual Tanks, 6,600 GVW, New Radials, 1 Owner, Red

\$7,900

A&J Auto Sales

798 E. Main St. Rt. 322 East, Ephrata, PA 17522
717-733-2873

NOW YOU FINALLY HAVE A CHOICE IN HEAVY DUTY ALUMINUM TRAILERS

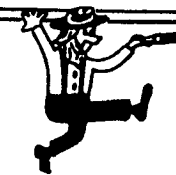


HOSTETTLERS INTRODUCES THE FEATHERLITE MODEL 8125

Standard Features Include:
8' Wide x 7' High x 24' Long

- * Heavy Hubs and Wheels
- * Spare Wheel & Tire with Carrier
- * Skid Proof Extruded Aluminum Floor
- * Full Swing Rear Gate With 1/2 Slider
- * Solid Panels in Rear Gate
- * Solid Sides Up 54" with 2 Air Vents
- * 9R17.5 16 Ply Goodyear Tires
- * Vacuum Hydraulic Brakes
- * Curbside Escape Door
- * Center Gate with 1/2 Slider
- * Rubber Dock Bumper
- * Plexiglass Track in Air Venting

All This Plus A 6 Year Warranty - Call Us For More Details



Hostetler Truck Bodies & Trailers
Rt. 322 Milroy, PA 17063
717-667-3921

- 1985 KW K100E, 60,000 miles on rebuilt motor, new tires, etc., many new parts, excellent shape, must see...\$21,500
- 1979 Fontaine 42' drop frame trailer, excellent tires and brakes, all radials must see...\$5,900
- 1973 Dorsey 45' drop frame trailer... \$3,900

215/767-7709

Lowboy Single Axle Trailer w/beaver tail and ramp, set up for hauling equipment or hay, etc., \$800. 717/922-3340.

New 1991 350 Ford cab and chassis, GVW 8000 lbs, PS, automatic w/2000 miles, List \$15,700; \$11,800. 717-653-5733.

R-Model Mack, single axle tractor, 237hp engine, good mechanical condition, inspected, serviced, \$4200 OBO. 717/656-9544.

Rollback 15' Jerrdan w/winch, 1975, D500 Dodge, 17,000 GVW, \$3750. 717-246-1738.

Snow plow, Meyer 7 1/2' power angle, ft 73-87 GM 4WD's, like new \$1500. 215-348-9041 8:30-5. Ask for Wendell.

WANTED: 22-26' Rollback body, in good condition 717/529-2512.

Trailer Hitches
Brake Controllers
Pintle Hooks
and Much More!
Free Catalog *
Free UPS/Credit Cards
Weaver Distributing
1-800-Weaver-D

1992 Eby
Aluminum Gooseneck
Cattle Trailer
7 1/2 x 18'
412-297-3934 or
412-297-3182

MOTORS
New & Rebuilt
350, 366,
427, 454
6.2 Diesels
Rebuilt & Used
Will Install
Roll Back Service
(at cost)
717-762-6415



USED EQUIPMENT SALE

POSSUM BELLY TRAILERS

- 1987 Eby 48'x96"x13'6" Cattle/Hog Combo (Jailhouse)
- 1984 Barrett 46'x96"x13'6" Cattle Trailer Jailhouse
- 1983 Barrett 48'x96"x13'6" Cattle Trailer
- 1983 Wilson 45'x96"x13'4" Cattel/Hog Combo
- 1982 Wilson 45'x96"x13'2" Cattle Trailer
- 1982 Wilson 45'x96"x13'6" Cattle-Pot

STOCK TRAILERS

- 1986 20'x8' Aluminum Walling
- 1985 Super Goose 20'x6'x6'10"
- 1983 Eby 18'x7'6"x6'6" Gooseneck
- 1982 Triggs 30'x8'x6' Fiberglass

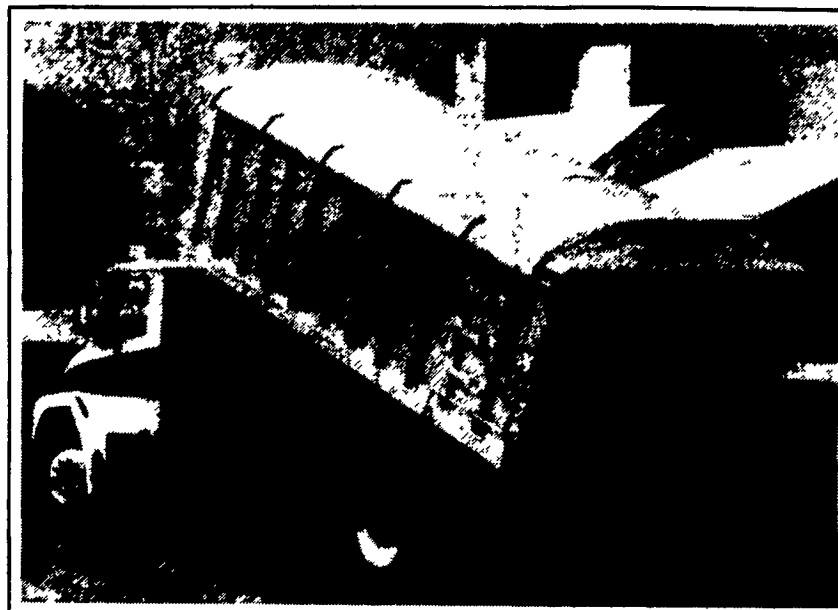
BODIES

- 1993 21'x6'6"x96" Double-Decker
- Call For Special Pricing
- (4) 12' Eby Aluminum Cattle Body
 - 17' Eby Cattle Body
 - 21' Eby Aluminum -Double Deck
 - 24 1/2' Eby Aluminum Body
 - 20' Fruehauf - Deck-Rail & Decking
 - 8 1/2' Eby Aluminum - Chicken Body

M.H. Eby, Inc.
1194 Main Street (Route 23)
Blue Ball, PA 17506
(717) 354-4971 (800) 292-4752
FAX: (717) 355-2114
4435 State Route 29
West Jefferson, O-I 43162
(614) 879-6901 (800) 752-0507
FAX: (614) 879-6904

EBY AGRI-DUMP BODIES

Rugged...built like a heavy dump truck



CHECK OUT THESE FEATURES/BENEFITS

- Up to 40% lighter than steel, for greater payload
- Designed for long life
- Resale value
- Corrosion resistant, never needs painting
- Appearance to complement any truck
- Complete list of popular options, including tailgates tarps and sides

STANDARD SPECIFICATIONS

- 6" heavy-duty extruded longitudinal sills
- 3" crossmembers on 12" centers on body lengths to 14'; 4" crossmembers on 12" centers on lengths over 14'
- 5"x1 1/4" extruded side posts, slanted for improved aerodynamics; 3"x2" heavy wall top rail
- .125" thick side sheets; .188" thick floor sheet (.250" thickness optional)
- Single acting tailgate with center flow chute, hinged top
- Rear ladder rung with step mounted on mud-flap bracket
- Includes mudflaps, aluminum splash shield, ICC-approved bumper and lights.

Eby Aluminum Agri-Dump Bodies pay off in dependable long-term service. Their all-aluminum construction means:

- Greater payload efficiency
- Maintenance-free service
- Substantially higher resale value.

Eby's time-tested design is available in lengths to 24' for grain bodies and 10 1/2' for general purpose dump bodies. A long list of standard features such as tarp rail, built-in steps, aerodynamic uprights and Harsh hoist is complemented by a full range of custom options, including tailgates, Wahpeton tarps and grain chute.

When you select your next grain body or general purpose dump body, consider the value that aluminum offers. It's a worry-free investment in your future.



GRAIN BODIES

STANDARD LENGTHS: 12'; 14'; 15'; 16'; 17'; 18'; 20'; 22'; 24'

OVERALL WIDTHS: 96" standard, 102" optional

SIDE HEIGHTS: 48" standard, 54", 60" or 72" optional (other heights available on request)

GENERAL PURPOSE DUMP BODIES

—Ideal for landscaping work, construction, and hauling of loose aggregate or bulk commodities

STANDARD LENGTHS: 6'; 8 1/2'; 9'; 10'; 10 1/2'

OVERALL WIDTHS: 96" or 98" standard

SIDE HEIGHTS: 36" standard, 40" and 48" optional



M.H. Eby, Inc.

1194 Main Street (Route 23)
Blue Ball, PA 17506
(717) 354-4971 (800) 292-4752
FAX: (717) 355-2114

ATTENTION
Farmers - Landscapers
Call Now For Special Pre-Spring Pricing

Committed to the Agri Transportation Business