

**R & R CAR AND TRUCK CENTER**



1989 IHC S1954 DT 360, 5 Spd., PS, AC, 188" WB, 25,000 GVW, Clean Truck  
Call For Details

18' Dump Body Lumber Bed, 60" Bulkhead, Steel Floor, Twin Cylinder  
Call For Details



**OTHER IHC'S AVAILABLE  
GIVE US A CALL  
ALSO ROAD AND STORAGE TRAILERS**

**CALL RAY LEED:  
(717) 560-4901**

- 1991 Dodge Dynasty 4 Cyl., AT, AC, CR, Tilt, AM-FM, Black, 71,800 Mi.....\$6,600
- 1990 Olds Delta 88 Royale V6, AT, Loaded, Silver, 53,500 Mi.....\$8,900
- 1990 Dodge Ram 350 15 Pass. Maxi Van, V8, AT, Dual AC, CR, Tilt, Black 153,000 Mi. . \$7,600
- 1989 Dodge Daytona ES Turbo AT, Loaded, Red/Gray, 51,500 Mi.....\$6,800
- 1989 Olds Cutlass Calais S Quad 4, AT, Loaded, Black, 45,600 Mi.....\$6,500
- 1989 Pontiac Grand Am LE, Quad 4, 5 Spd., AC, CR, Tilt, AM-FM Cass., White, 57,000 Mi.....\$6,500
- 1989 Pontiac Grand Prix V6, AT, Loaded, Blue, 58,500 Mi.....\$6,900
- 1988 Cutlass Supreme V6, AT, Loaded, Black, 56,600 Mi.....\$6,900
- 1988 Ford Aerostar XL, 7 Pass., V6, AT, AC, CR, Tilt, AM-FM Cass., Blue/Silver, 51,800 Mi.....\$7,800
- 1988 Chevy Astro CS 8 Pass., V6, AT, AC, Tilt, AM-FM, White, 56,900 Mi.....\$7,800
- 1988 VW Jetta GL, 4 Cyl., 5 Spd., AC, CR, PW, Sunroof, AM-FM Cass, Black, 53,200 Mi. ....\$6,800

**Brubaker's Auto Sales  
Myerstown, PA  
717-866-5237**

**YES!!  
ENGLE FORD  
DOES MAKE IT EASIER!!**

Over 100 New & Used Trucks, Vans & 4x4's

- 1989 Bronco II XLT, V6, 5 Spd., AC, Power Equipment
- 1991 S-10 Super Cab, V6, 5 Spd., 4x4, 51,900 Miles
- 1989 F350 Crew Cab DRW, XLT, 4x4, V8, AOD, Power Equipment, Cruise & Tilt
- 1989 Ford Conversion Vans, Quad Cab w/ Rear Seat Bed, LXR, AC & Heat, V6, XLT, 3 To Choose
- 1987 F700 18' Stake Dump, 3.0 V6, 5 Spd., Dual Tank, Work Ready
- 1990 F250 4x4 Super Cab, XLT, 4x4, 4.5 Liter, Power Window, 16,400
- 1987 F350 Crew Cab, XLT, AC, AT, Power Equipment
- 1990 Aerostar Cargo Van, V6, AOD, Sid. Rear Gr.
- 1982 F350 Chassis Cab, V8, 4 Spd., 4x4, 2WD
- 1990 F250 4x4 V8, AC, Auto Trans, Work Ready, 19,000 Miles
- 1987 Aerostar XLT, 7 Passenger, V6, AOD, AC, Cruise & Tilt
- 1989 Ranger XLT, AC, 5 Spd., 4x4, 16,000 Miles, Blue & Silver
- 1988 F-Super Duty Commercial, Dump, 4x4, V8, 5 Spd.
- 1989 Ford Conversion Van, V8, AT, LP, XLT, AC & Heat

**ENGLE FORD, INC.**  
Rt. 147 North  
Millersburg, PA 17061  
The Call's On Us 1-800-242-8075  
1-717-692-1811

**Huntingdon Equipment**

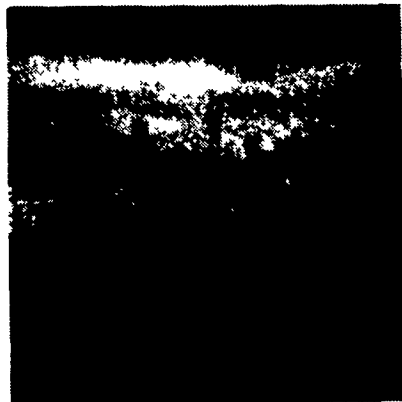
Rentals Available

GOOD USED EQUIPMENT

Huntingdon Valley, PA

215-672-9667 • 1-800-543-3893

Eddie



20 Ton P&H Crane 3 Sec. Hyd. Boom mounted on a 1968 F.W.D. both engine gas (new front 89), fleet maintenance.



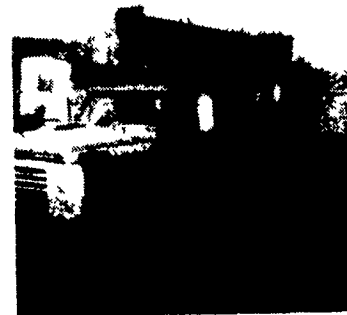
Ford Squirt Bucket 40' To Bottom Of Bucket, Others up to 65', Call For Details



Dump Truck One of several - 1981 Ford F-600, gas, auto. We also have five man cabs with dumps and air compressors.



1985 F-600 8.2 Diesel, Auto, 5 Man Cab, Utility With Rollup Door On Rear. Clean, 20K Miles, Also 2-86 International 8.2 Diesel Auto 5 Man Utility. Low Mileage.



Ford Flat Bed with Pitman Boom 11,000 lbs. Cap, Also Front Winch, One of Three.



1979 Ford V8 10-Speed, Air, 14,000 Lbs. Boom, 2 Speed Auger, Upper Controls, 4 Outrigger, Dig Holes-Lift-Put Man In Air. This Unit Does It All.

**DIGGER DERRICKS/AERIAL BUCKETS/UTILITY EQUIPMENT**



*Frederick*

**THE TRUCK PLACE**



**PASSENGER & CARGO VANS**  
New & Used, Gas or Diesel



**'91 GMC CONVERSION VAN**

13 Pass., Extra High Top, Front & Rear Air, Frederick Owned, Only 535 Miles, Ideal For Wheelchair Lift

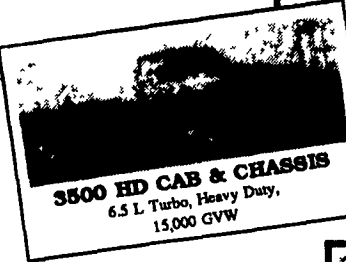


**CENTURION EXT. CAB & CREW CAB DUALY'S**

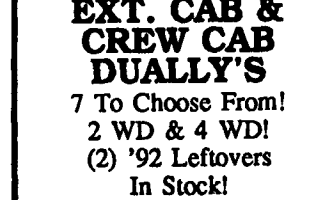
7 To Choose From! 2 WD & 4 WD! (2) '92 Leftovers In Stock!



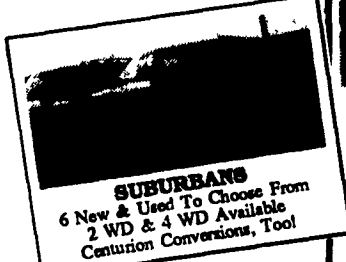
**CONVERSION VANS**  
6 To Choose From! Hi-Tops & Low Tops Available



**3500 HD CAB & CHASSIS**  
6.5 L Turbo, Heavy Duty, 15,000 GVW



**'89 CHEVY VAN BODY**



**SUBURBANS**  
6 New & Used To Choose From 2 WD & 4 WD Available Centurion Conversions, Tool

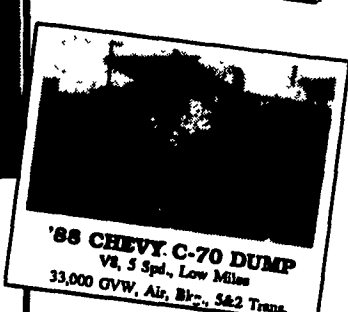


**'93 CHEVY S-10 BLAZER 4x4**

Tahoe Package Starting As Low As \$16,900



**'92 CHEVY UTILITY BODY**



**'88 CHEVY C-70 DUMP**  
V8, 5 Spd., Low Miles 33,000 GVW, Air, Blr., 3&2 Trans.

**SUBURBANS • HI CUBES • CREWCABS • DUMP TRUCKS • ROLLECKS**

**IF WE DON'T  
HAVE IT,  
WE'LL  
LOCATE IT!**

*Frederick*

**The SUPERMARKET OF TRUCKS**

1505 Quentin Rd.  
Rt. 72 - Lebanon  
**SALES HOURS:**  
Mon.-Fri. 9-9  
Sat. 9-5

**(717) 274-1461 • PA (800) 222-5523**