

**Eighty-Four Livestock**

Eighty-Four, Pa.  
 Monday, Feb. 22, 1993  
 Report Supplied by Auction  
**CATTLE** 190. STEERS, SELECT 70.00-74.50; STANDARD 60.00-67.00; UTILITIES 59.50 AND DOWN.  
**HEIFERS:** SELECT 68.00-75.00; STANDARD 61.00-67.50; UTILITIES 60.00 AND DOWN.  
**COWS:** UTILITY AND COMMERCIAL 50.00-55.00; CUTTERS, BONERS AND UTILITIES 45.00-51.00; CANNERS AND LOW CUTTERS 41.00-46.00; SHELLS 40.00 AND DOWN.  
**BULLS:** #1 59.00-66.00; #2 54.00-60.00.  
**FEEDER STEERS:** 200-300 LBS. 75.00-102.50; 300-500 LBS. 76.00-95.00; 500-800 LBS. 60.00-91.00.  
**HEIFERS:** 200-300 LBS. 78.00-95.00; 300-500 LBS. 61.00-80.00; 500-800 LBS. 59.00-75.00.  
**BULLS:** 200-300 LBS. 76.00-105.00; 300-500 LBS. 70.00-92.00; 500-800 LBS. 62.00-84.00.  
**CALVES:** 157 HEAD. VEALERS CHOICE 95.00-117.50, GOOD 86.00-94.50; STANDARD AND GOOD 62.50-84.00; UTILITIES 61.00 AND DOWN.  
**FARM CALVES, HOLSTEIN BULLS** #1 130.00-185.00; #2 100.00-127.50; BEEF BULLS 95.00-195.00.  
**HOLSTEIN HEIFERS:** 85.00-195.00.  
**BEEF X HEIFERS** 90.00-177.50.

**HOGS:** 36 HEAD. #1&2 200-220 LBS. 38.50-43.75; #2&3 220-260 LBS. 43.75-44.50.  
**SOWS:** UNDER 500 LBS. 34.00-40.00; OVER 500 LBS. 36.25-37.75.  
**BOARS:** 30.00-32.25.  
**FEEDER PIGS:** 14 HEAD. #1&3 40-50 LBS. 24.00-25.00; #1&3 60-100 LBS. 26.00-29.00; UTILITIES 10.00 AND DOWN.  
**SHEEP AND LAMBS:** 58 HEAD. CHOICE 51-75 LBS. 70.00-79.00; 76-100 LBS. 75.00-77.50; FEEDER LAMBS GOOD AND CHOICE 65.00-75.00; UTILITIES 63.00 AND DOWN; EWES 22.50-37.50.  
**GOATS:** 3 HEAD. LARGE 77.00; MEDIUM, 37.00 AND 50.00.

**Mercer Livestock Auction**

MERCER, PA  
 February 23, 1993  
**CATTLE** 154.. PDA ... STEERS: Choice 1100/1545 lbs. 77.00-83.85, one down to 68.30, few Select 1025/1400 lbs. 69.60-70.60, Standard 57.10-66.00. HOLSTEINS: couple Select 59.50 & 60.35, couple Standard 52.75 & 55.75. HEIFERS: Choice 955/1470 lbs. 75.00-78.00, Select 63.10-75.10. COWS: Breaking Utility and Commercial 50.25-54.60, Cutter and Bon. Utility 45.00-51.00, one to 56.00, Canner and Low Cutter 42.00-47.00. Shells down to 39.00. BULLOCKS: few Choice 1160/1295 lbs. 64.35-66.10, one Select 62.35, couple Standard 54.75 & 55.85.

**BULLS:** few Yield No. 1 1365/1890 lbs. 60.85-62.10, few No. 2 850/1140 lbs. 58.35-59.00. FEEDER CATTLE: Steers: few Medium No. 1 500/765 lbs. 63.00-66.00, couple Large No. 2 745/888 lbs. 52.00; Heifers: Medium No. 1 420/750 lbs. 55.00-68.00 mostly 60.00-62.00; Bulls: couple Medium No. 1 565 & 665 lbs. 60.00 & 64.00, feeder cows 650/750 lbs. 60.00-64.00.  
**CALVES** 86... VEALERS: Standard and Good 105/180 lbs. 58.00-70.00, 70/105 lbs. 40.00-51.00, Utility 60/95 lbs. 10.00-37.00. RETURNED TO FARM: No. 1 Holstein bulls 90/120 lbs. 130.00-181.00, few No. 2 80/130 lbs. 75.00-125.00. Couple No. 1 Holstein heifers 110 & 120 lbs. 170.00 & 180.00. Beef cross 80/90 lbs. bulls and heifers 70.00-125.00.  
**HOGS** 98... BARROWS AND GILTS: one lot US 1-2 227 lbs. 44.75, 1-3 230/265 lbs. 42.10-44.50. SOWS: couple US 1-3 480/540 lbs. 40.00-43.00, one 2-3 705 lbs. 34.00, one Medium 280 lbs. 33.00, one Lightweight 440 lbs. 25.00.  
**FEEDER PIGS** 0...No market test.  
**SHEEP** 3...Couple Choice 88 lbs. Woolled sl. lambs 86.00. Slaughter sheep: one at 50.00.

**Leesport Livestock Auction**

LEESPORT, PA  
 February 24, 1993  
**CATTLE** 294.. PDA ... Supplied included 107 sl. steers and sl. heifers. Compared with last Wednesday's market: Sl. steers uneven; sl. cows strong to 1.25 higher. STEERS: Choice 1015/1510 lbs. 75.75-79.25, few 81.25, Select 1040/1425

lbs. 70.25-76.00, Standard 64.25-69.50. HOLSTEINS: one High Choice and Prime 79.00, Choice 930/1490 lbs. 71.00-75.75, Select 66.00-70.75, Standard 61.00-62.50. HEIFERS: few High Choice and Prime 1070/1425 lbs. 79.00-82.75, Choice 1040/1575 lbs. 73.00-79.00, Select 67.25-71.00, Standard 61.50-64.50. COWS: Breaking Utility and Commercial 53.50-58.75, Cutter and Boning Utility 50.75-54.50, Canner & low Cutter 45.75-52.00. Shells down to 40.00. BULLOCKS: Choice 1330/1650 lbs. 66.50-69.25, Select 62.50-66.75. BULLS: Yield Grade No. 1 1500/1785 lbs. 68.50-69.75, No. 2 1545/1885 lbs. 62.75-66.75.  
**CALVES** 213... VEALERS: few Good and Choice 140/195 lbs. 65.00-87.50, Standard and Good 55/110 lbs. 45.00-56.00, Utility 55/85 lbs. 32.50-47.00. RETURNED TO FARM: No. 1 Holstein Bulls 80/130 lbs. 130.00-180.00, mostly 160.00-174.00, No. 2 80/120 lbs. 70.00-125.00, 70/80 lbs. 55.00-90.00. No. 1 Holstein heifers 80/135 lbs. 155.00-199.00, No. 2 80/110 lbs. 75.00-145.00. Beef cross 70/140 lbs. bulls and heifers 77.50-150.00.  
**HOGS** 380...Barrows and gilts uneven. BARROWS AND GILTS: US No. 1-3 225/260 lbs. 42.75-46.00, 2-3 245/288 lbs. 40.85-43.75, 188/225 lbs. 39.25-42.00. SOWS: strong to 4.00 higher; US No. 1-3 365/440 lbs. 37.25-38.50, 445/560 lbs. 40.00-43.50, 2-3 290/435 lbs. 32.00-35.00. BOARS: 225/385 lbs. 31.25-33.00, few 500/615 lbs. 28.00-28.25.  
**FEEDER PIGS** 239...US No. 1-3 15/20 lbs. 13.00-19.00--per head, 20/35 lbs. 86.00-97.50, lot 105.00, 35/55 lbs. 70.00-90.00, few Utility 35/57 lbs. 45.00-62.00--per cwt.  
**SHEEP** 18...few Choice 35/50 lbs. New Crop 80.00-110.00, few 130.00. Slaughter sheep: 35.00-42.50.

**GOATS** 13...Small and Large 45.00-65.00, one 97.50, Small Kids 30.00-36.00. --- all per head.  
**Lebanon Valley Livestock Auction**  
 FREDERICKSBURG, PA  
 February 23, 1993  
**CATTLE** 158... PDA .. STEERS: two Select and Low Choice 77.75 & 78.00. HOLSTEINS: one Choice 71.00, one Select 62.50, few Standard 60.50-60.75. HEIFERS: two Select Holsteins 55.75 & 62.75, two Standard 54.00 & 55.75. COWS: Breaking Utility and Commercial 50.75-53.00, few 54.75, few low dressing down 44.25, Cutter and Boning Utility 48.00-53.75, few 54.75, Canner & Low Cutter 43.75-48.00. Shells 32.75-43.00, few down to 10.00. BULLOCKS: two Standard Holsteins 54.00 & 54.50. BULLS: Yield Grade No. 1 1400/1745 lbs. 59.25-64.25, few 67.00, one low dressing 57.75.  
**CALVES** 173... VEALERS: Standard and Good 70/105 lbs. 50.00-70.00, Utility 55/90 lbs. 30.00-47.00. RETURNED TO FARM: No. 1 Holstein bulls 85/130 lbs. 140.00-185.00, few down to 120.00, No. 2 80/115 lbs. 90.00-147.00, few 157.00, few down to 80.00. No. 1 Holstein heifers 95/120 lbs. 150.00-182.00, few No. 2 85/100 lbs. 82.00-120.00. Few Beef cross 85/145 lbs. bulls and heifers 95.00-117.00.  
**HOGS** 126... BARROWS AND GILTS: lot 1-2 235 lbs. 44.25, 1-3 220/260 lbs. 43.85-44.35, lot 2-3 207 lbs. 41.00. SOWS: US 1-3 330/605 lbs. 33.25-39.00 mostly 35.00-38.00, Medium 280/420 lbs. 19.00-31.50. BOARS: two 28.50 & 30.25. two lightweights 33.00.  
**FEEDER PIGS** 0...No market test.  
**SHEEP** 1...one Choice 85 lbs. woolled sl. lambs 70.00.  
**GOATS** 0...No market test.

**ATTENTION CATTLE FEEDERS**

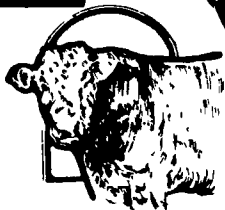
**SPECIAL GRADED FEEDER CATTLE SALE**

Friday, March 5, 1993

- 1 Load Of Cattle Out Of New York State, All Angus Calves & Yearlings
- 1 Load Of Angus Cattle Out Of Western PA

**Walter M. Dunlap and Sons**

Lancaster Stockyards Tel. (717) 397-5136  
 An Old Line Commission Firm Keeping Abreast With The Times



**VINTAGE SALES STABLES, INC.**

Paradise, PA 17562

**\* 3 POSSUM BELLY TRAILERS AVAILABLE TO HAUL FEEDER CATTLE \***

For More Info. Call:  
 L. Robert Frame, Sr.  
 (717) 442-4181 Office  
 (717) 768-8204 Office  
 (215) 458-5060 Home

**HAY, STRAW & GRAIN SALE**

Every Thursday at 1 p.m.

Auction will continue all year long

**Vintage Sales Stables, Inc.**

(Rt. 30, 10 miles east of Lancaster in Paradise, PA)

For Info. 717-442-4181 business  
 215-458-8518 home

L. Robert Frame, Sr. president  
 Glenn S. Frame Mgr.

**A & C Diffenbach Auction Inc.**

100 West Jackson Street • Box 186 • New Holland, Pennsylvania 17557  
 Office: (717) 355-7253 • FAX: (717) 355-9547

**HAY & GRAIN SALE EVERY MONDAY - 10:00 A.M.**

MON.	MAR. 1	WHOLESALE FURNITURE	6:30 P.M.
WED.	MAR. 3	WINROSS TRUCK & TOYS	6:30 P.M.
FRI.	MAR. 5	STOLTZFUS HARDWARE, WOOD & METAL WORKING EQUIP., AIR COMPRESSORS, FORKLIFTS.	9:00 A.M.
FRI.	MAR. 12	FARM EQUIPMENT & SUPPLIES	9:00 A.M.
TUES.	MAR. 23	QUILT, CRAFT & BUGGIES	9:00 A.M.
WED.	MAR. 24	QUILT & CRAFT	9:00 A.M.

EQUIPPED FOR AN AUCTION AT YOUR PLACE OR OURS  
 ALAN DIFFENBACH AUCT. - AU2258-L

**BOYDELL FARMS**

302 Iona Rd., Lebanon, PA 17042  
 Phone: 717-272-8943

**DISTRIBUTORS FOR:**

SILO QUEEN

2390-2402-2517-2518

**North Coast Seed Corn**



NEW 2329 BIRD FOOD  
 2525

FIELD PEAS & TRICAL  
 PEA MAGNUM

CHEMICALS

**SOYBEANS**

STINE SOYBEAN SEEDS NC  
 3090 E 354-284-Shore  
 Resnick - Pella

**TIMOTHY, TORO and CLIMAX TIMOTHY**

**ALFALFA**  
 84 VVAP VERNAL WETFOOT DISTRIBUTOR FOR GREAT PLAIN VARIETIES CIMARRON VR KEY BELMONT BLENDS

**BALER TWINE**

**FERTILIZER**

**OATS**  
 NOBLE PORTER OGLE HERCULES

**SEED OATS \$4.75 Per Bu.**

WHOLESALE & RETAIL

**NEW HOLLAND SALES STABLES INC. THE ACTION AUCTION**

LIVESTOCK IS OUR ONLY BUSINESS

**MONDAY**

**SLAUGHTER HOGS**  
**EARLY BIRD HOG SALE**  
**7:30 A.M.**  
 Sell Your Hogs At New Holland Sales Stables, Inc.  
 See them weighed, sold and pickup your check.



**10:00 A.M.**  
**HORSES**  
**MULES**



**1:30 P.M.**  
**BEEF SALE**  
**SHEEP**  
**GOATS**  
**CALVES**



**THURSDAY**

**Beef Auction 10:00 A.M.**



**BULLS, STEERS, BEEF COWS**

**1:00 P.M.**  
**STOCKERS & FEEDERS**



**11:30 A.M.**  
**SHEEP**  
**GOATS**  
**CALVES**



**WEDNESDAY**

**HEIFER SALE 11:00 A.M.**  
**COW SALE 12:00 NOON**



**HEIFERS BULLS DAIRY COWS**  
 We have the usual run of 50 to 100 Heifers, all ages Loads of fresh cows and springers from our regular shippers. Also some local fresh cows and springers.

**1:30 P.M.**

**FEEDER PIG SALE**



Pigs are accepted after 6:30 A.M. State graded from 8 to 12 Dairy Barn and Feeder Pig Barn are cleaned and disinfected weekly for your protection.

**NEW HOLLAND SALES STABLES, INC.**

12 Miles East of Lancaster Off Route 23, New Holland, Penna.

**MANAGERS**

Norman & David Kolb - 717-397-5538  
 Field Representatives  
 Luke Eberly - 215-267-6608 738-1865  
 Homer Eberly - 215-267-3047  
 Ron Ranck - 717-656-9849

**Sale Barn Office Manager**  
 Roger Floyd - 717-354-4341  
 FAX #717-355-0706

**Order Buyer**  
 Paul Good - 215-445-6662