

Pennsylvania Livestock Auction

Waynesburg, Pa.
Thurs., February 25, 1993
Report Supplied by Auction
CATTLE: SL. COWS: UTILITY & COMMERCIAL 45.00-55.00; CUTTER & BONING UTILITY 44.00-53.25; CANNER & LOW CUTTER 40.00-47.50; SHELLS 40.00 & DOWN. BULLS: YIELD GRADE 1 1500#-1870# 56.50-67.00; YIELD GRADE 2 1000#-1400# 51.00-58.00.
FEEDER STEERS: M&L-1 300-500# 77.00-98.00; 250-280# 85.00-102.00, M 900-1000 60.00-76.00. HEIFERS M 1&L-1 300-500# 70.00-92.00; L-1 400-650# 55.00-85.50. BULLS M&L-1 300-620# 58.00-94.00.
CALVES: VEAL.. PRIME 80.00-95.00; CHOICE 74.00-90.00; GOOD 60.00-72.00.
FARM CALVES: #1 HOLSTEIN BULLS 90-120# FEW 80.00-100.00; #2 HOLSTEIN BULLS 80-100# FEW 75.00-95.00; BEEF X BULL&HFRS./HD. 100.00-145.00.
HOGS: BARROWS & GILTS #1-2 210-255# 42.00-45.00; #2-3 255-280# 37.50-42.00; SOWS #1-3 300-500# 26.00-34.00.
FEEDER PIGS: 1-3 25-35# 10.00-24.00/HD.
LAMBS: HIGH CHOICE 55.00-75.00; CHOICE 85-95# 70.00-78.00. FEEDER LAMBS GOOD 65.50-76.00, EWES 24.00-42.00
GOATS: LARGE 45.00-70.00/HD.; MEDIUM 20.00-40.00/HD.; SMALL 10.00-19.00/HD.
HORSES: 50.00-65.00, PONIES 20.00-52.00.

Valley Stockyards

Athens, Pa.
Monday, Feb. 22, 1993
Report supplied by auction
HOLSTEIN HEIFER CALVES TO 200.00.
VEAL CALVES TO 73.00.
VEALER BULL CALVES TO 185.00.
SLAUGHTER CALVES 45.00-69.00.
GRASSERS & FEEDERS 60.00-75.00.
NEW LAMBS TO 90.00, WOOL 84.00.
SHEEP TO 46.00.
HOGS 200-250, TO 50.00.

SOWS TO 32.00.
BOARS, NONE.
PIGS BY THE HEAD, NONE.
HEIFERS TO 58.00.
STEERS TO 64.50.
FEEDER STEERS TO 86.00.
BULLS TO 61.00.
GOOD COWS 48.00-52.25, 1 AT 56.00.
COWS MEDIUM 42.00-48.00.
COWS POOR OR SMALL 42.00 AND DOWN.
CATTLE MARKET REAL ACTIVE.
CALF MARKET STEADY.
HORSES TO 850.00.
PONIES TO 425.00.
GOATS: TO 75.00.
CATTLE MARKET GOOD.

Indiana Livestock

Homer City, PA
Thursday, February 25, 1993
Report supplied by Auction
CATTLE 245. STEERS: HIGH CHOICE AND PRIME 78.50-81.00, CHOICE 75.00-77.50, SELECT 71.00, SELECT & CHOICE HOLSTEINS 65.00-71.00.
HEIFERS. CHOICE 81.75, SELECT 75.00-79.00.
COWS: BREAKING UTILITY & COMMERCIAL 55.00-59.00, CUTTER & BONING UTILITY 48.00-54.00, CANNER & LOW CUTTER 42.00-46.00, SHELLS 41.00.
BULLOCKS: SELECT 74.00.
BULLS: YIELD GRADE NO. 1 60.00-66.50.
FEEDER CALVES: FRAMES SMALL 90.00, MED. 82.00, LARGE 74.50.
CALVES: 139 GOOD 92.50, STANDARD & GOOD 60 LBS. 55.00, 70 LBS. 69.00. HOLSTEIN BULLS #1 95-100 LBS. 165.00-180.00, #2 120 LBS. 110.00-140.00. HOLSTEIN HEIFERS 100 LBS 160.00.
HOGS 210. B&G US NO. 1-2 240 LBS. 47.00, US NO. 1-2 210-260 LBS. 43.00-45.50, SOWS US NO. 1-3 400-500 LBS. 41.00-44.00, BOARS 32.00.
FEEDER PIGS: 0.
SHEEP: 20. CHOICE 25 LBS. 120.00. FRD. LAMBS 20 LBS. 90.00 SHEEP 35.00-40.00.

Greencastle Livestock

Greencastle, Pa.
Thursday, February 24, 1993
CATTLE: 218. COWS TO 1.00 TO 2.00 LOWER, INSTANCES 3.00 LOWER. CALVES 71. HEIFERS CH. & PRIME FEW HOLSTEIN CHOICE 62.50-66.50, ONE SELECT 57.50 ONE STANDARD 53.00.
COWS: BREAKING UTILITY AND COMMERCIAL 51.00-55.25, FEW TO 57.00, LOW DRESSING TO 48.55, CUTTER AND BONING UTILITY 46.50-53.25, LOW DRESSING TO 42.00, CANNER & LOW CUTTER 44.25-47.50.
BULLS: YIELD GRADE 1 1370-1945 LBS. COUPLE 63.00-64.75, YIELD GRADE 2 ONE 1255 LBS. 56.00.
FEEDER CATTLE: CALVES FEW 1-2 700-1035 LBS. 57.00-62.00.
CALVES: STANDARD & GOOD 90-120 LBS. 59.64; STANDARD & GOOD 70-90 LBS. 55.00-60.00, UTILITY 55-90 LBS. 45.00-57.00.
FARM CALVES: HOLSTEIN BULLS 90-120 LBS. 145.00-186.00, 120-125 LBS. 120.00-150.00, 80-90 LBS., HOLSTEIN BULLS 90-120 LBS. 100.00-150.00, 70-90 LBS. 80.00-115.00 FEW TO 58.00. HOLSTEIN HEIFERS 95-115 LBS. 140.00-160.00, 85-95 LBS. 110.00-152.50, FEW 80-85 LBS. 100.00. HOLSTEIN HEIFERS 90-120 LBS. 100 LBS. 137.50. BULLS & HEIFERS 75-125 LBS. 65.00-150.00.
SOWS: 1-3 315-575 LBS. 37.00-43.00.
SHEEP: 80 SLAUGHTER LAMBS, NEW CROP CHOICE 25-55 LBS. 76.00-80.00 SLAUGHTER SHEEP 26.00-32.00.
GOATS: MEDIUM ONE 27.50.

Dewart Livestock Auction

Dewart, PA
February 22, 1993
CATTLE 79..PDA... STEERS: few Select and Low Choice 75.75-80.00. HEIFERS: few Select and Low Choice 73.00-77.75. COWS: few Breaking Utility and Commercial 52.75-54.00, Cutter and Boning Utility 49.75-55.50, couple 56.25, Canner and Low Cutter 45.00-48.75, Shells down to 42.00. BULLS: few Yield Grade No. 1 1450/1750 lbs. 63.50-65.50, few No. 2 1100/2075 lbs. 50.00-57.75.
CALVES 163...VEALERS: few Utility and Low Standard 60/85 lbs. 50.00-60.00. FARM CALVES: No. 1 90/130 lbs. Hols-

tein bulls 135.00-170.00, couple 180.00, No. 2 80/125 lbs. 75.00-130.00; few No. 1 90/125 lbs. Holstein heifers 150.00-185.00. Few Beef cross 75/100 bulls and heifers 105.00-197.50.
HOGS 61...BARROWS & GILTS: few lots US 1-2 240/250 lbs. 43.25-45.50, two head 46.10, lot 1-3 218 lbs. 44.25. SOWS: few US 1-3 300/450 lbs. 35.25-37.50, few 540/585 lbs. 40.00-40.75. BOARS: one 30.50, one lightweight 32.25.
FEEDER PIGS 64...US 1-3 40/50 lbs. 24.00-27.00. --- all per head.
SHEEP 0...No market test.
GOATS 0...No market test.

Penns Valley Livestock Market, Inc.

Auction every Tues. 7 p.m.
Centre Hall, Pa.
Report supplied by Auction
Tues., Feb. 23, 1993
RETURN TO FARM CALF 100.00-170.00.
GOOD VEAL: 70.00-99.00.
COMMON VEAL: 30.00-69.00.
COMMERCIAL COWS: 47.00-52.00.
CANNERS-CUTTERS: 45.00-54.00.
SHELLS: 36.00-44.00.
COMMON HEIFERS: 52.00-63.50.
GOOD FEEDERS: 65.00-78.00.
COMMON FEEDERS: 55.00-64.00.
BULLS. 55.00-63.50.

Jersey Shore Livestock Market, Inc.

Auction every Thursday at 4:00 p.m.
Jersey Shore, Pa.
Report supplied by Auction
Thursday, Feb. 25, 1993
RETURN TO FARM CALF 100.00-175.00.
GOOD VEAL: 60.00-90.00
COMMON VEAL: 40.00-75.00.
SELECT STEERS: 68.00-77.00.
COMMON STEERS: 65.00-66.50.
COMMERCIAL COWS: 50.00-56.75.
CANNERS-CUTTERS: 44.00-53.50.
SHELLS: 32.00-45.00.
SELECT HEIFERS: 68.00-72.50.
COMMON FEEDERS: 47.00-60.00
BULLS 54.00-63.50.
GOOD HOGS: 44.00-44.75.
HEAVY HOGS: 44.00-46.50.
SOWS: 38.00-41.50.

Herd Joins Test Program

DeFOREST, Wis. — David S. and Robin D. Dum of Mt. Joy, Pennsylvania have signed on as a contract herd in the American Breeders Service (ABS) progeny test (PT) program.

In this program, the Dum Farm is to use semen from young dairy bulls being tested by ABS. The ABS PT program is unique because it allows test herds to select which young bulls they would like to sample, while also allowing them the option to have ABS send them semen from a non-specific young sire.

The goal in either case is to have each progeny tested young sire receive a highly reliable sire summary at the conclusion of the testing period.

ABS selects PT herds based on management practices, including accurate record-keeping programs and animal identification program. The management of the PT herd affects the quality of the data ABS receives. ABS relies on the contract herds for accurate animal identification and official DHIA records.

After receiving this data, the Dum Farm is to receive benefit payments from ABS for each PT calf born, and again for each PT-sired daughter included on the sire's second USDA summary.

Producers interested in more information on the ABS PT program should contact their local ABS representative.



Thanks and Congratulations...

SCATTERED ACRES INC.

Reading, PA



- Heifer Headlocks
- Slant Bar Feed Through Fencing
- Gates



Energy Free Waterers

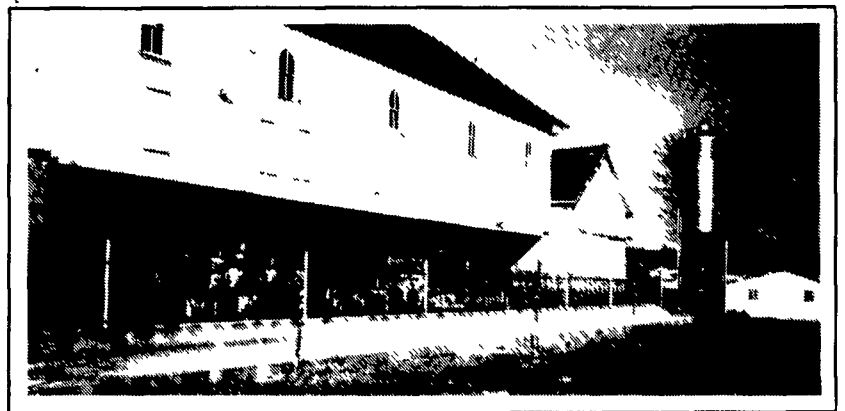


AMOS E. STOLTZFUS

Paradise, PA

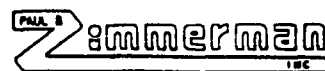


Headlocks & Gates



COCALICO BIOLOGICALS INC.

Reamstown, PA



- Fencing
- Gates



LAPP'S BARN EQUIPMENT

5935 OLD PHILADELPHIA PIKE, GAP, PA 17527
PHONE: 717-442-8134 WE SERVICE WHAT WE SELL

Radio Dispatched Trucks

