

TRACTORS

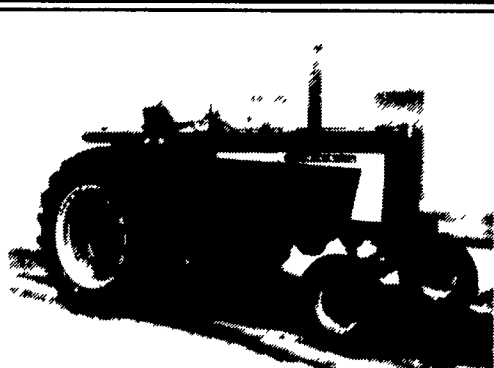
MF 1080, complete engine & hyd. overhaul
 MF 275 diesel w/38" rubber
 MF 165 diesel, good rubber, new paint
 MF 165 diesel, 28" rubber, new paint
 MF 135 w/power steering, gas, new paint & new rubber
 MF 135 gas
 MF 35 gas w/power steering & loader

EQUIPMENT

Rhino 11' disc harrow
 Int. 510 7x18 double disc drill
 JD 325 3 pt. 3 bottom hyd. reset
 JD F355H, 5 bottom, hyd. reset plow
 Oliver 565, 4 bottom semi-mount plow
 MF 4 bottom, semi mount plow
 MF 880 5 bottom spring reset plow
 IH 510 4 bottom trnp back plow, like new
 Brillion packers 8 tooth chisel plow
 Corn cultivators dif. makes & dif. sizes 4R-8R
 JD 10' cultmulcher IH 12' Cultmulcher
 Used Brillion cultipacker and cultmulcher parts
 New farm and corral gates 3 pin 7" scraper blade
 3 pt. McKee snow blower Souders snow blade

NOLT'S EQUIPMENT

403 Centerville Rd., Newville, PA 17241
 (717) 776-6242 No Sunday Calls
 No Out-Of-State Personal Checks
 We Ship UPS



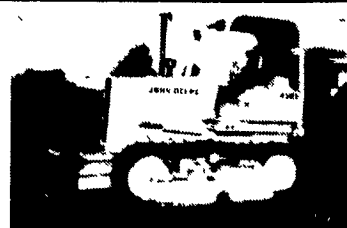
IH 806, TA, 3 Pt., Dual Hyd. \$5,200

Turbo Kit Off 4230 \$500
 Case 830, diesel, gear drive \$1,950
 IH 706, gas, NF, runs excellent \$2,200
 JD 1020 gas, new rubber, wts. \$3,800
 Oliver 1750, dsl, WF \$3,800
 IH 544, TA, Dsl, Row Crop \$4,900
 IH 1456, 1971, Dual PTO \$5,800
 IH 1060, TA, orig. paint \$6,200
 IH 1086, 4 post, TA, nice \$8,500

(717) 532-8926 No Sunday Calls



JD 450C Crawler Loader \$11,500



1987 JD 450E 6-Way Blade \$24,500



JD 544 Loader \$12,500



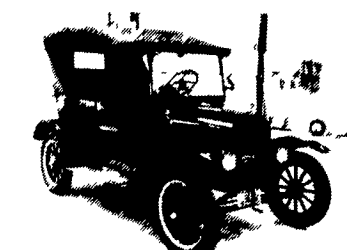
1985 J.D. 455 D Crawler Loader, New Pins, Bushings & Sprockets \$18,500



Clark Forklift, 3 Stage Tow Motor \$3,500

JD 450B Crawler Loader w/Backhoe 9 Ton 3 Axle, \$15,000

Tagalong Trailer, \$1,200
1992 Goose Neck Trailer, 24' 2 Axle, Electric Brakes \$500



1924 Model T in Excellent Condition \$8,500

AA Equipment

1797 Robert Fulton Hwy.
 Quarryville, PA 17566
 717/529-2512

"FREE CATALOG" CALL OR WRITE



HOURS Mon - Fri 9-6
 Saturday 9-2
 Sunday - Closed
 (717) 944-0318

DEPARTMENT L F
 4294 EAST HARRISBURG PIKE
 MIDDLETOWN, PA 17057

DIRECTIONS TO OUR MIDDLETOWN STORE- On your road map, we are on Route 230 mid way between Middletown & Elizabethtown Take the Toll House Rd exit off Rt 283, turn and go to stop at Rt 230, go east on 230 1-1/2 mi on the right

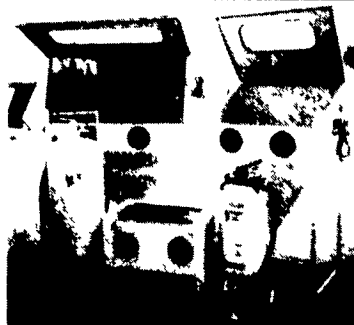
"RESTORED & REPRODUCTION" OLD GAS PUMPS AND PARTS

Great For The Den Or Garage, Very Colorful, Guaranteed Conversation Piece, Short Ones - Tall Ones, We Even Have One Turned Into An Authentic Slot Machine!
 Also - Globes, Signs & Parts To Restore Your Own, Call And Ask For Pump Catalog
We Buy Old Pumps & Other Gas Station Relics!!!!

AIR COMPRESSORS & MORE IN OUR CATALOG

5 H.P. VERTICAL ASME CODED TANKS, 2-STAGE PUMPS, CAST IRON CYLS, INDUSTRIAL MODELS w/MAG STARTER IF REQ

LOW AS \$899.00 ALSO 7 1/2 H.P. AVAILABLE



PRESSURE POT BLASTERS - 125 Lb Capacity \$259, 325 Lb \$499
 BLAST CABINETS - 4 Wide Unit With All The Goodies \$699, 3' Wide Unit w/Options Available \$399, Closeout On Mini Table Top Unit Till Gone.

Performance Sale!



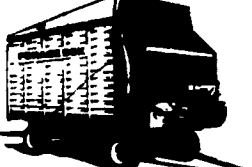
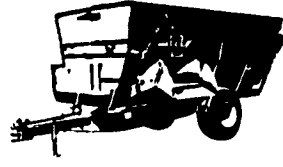
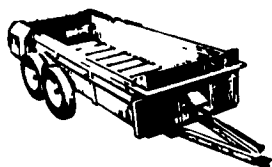
CONVEYOR CHAIN

For Every Make & Model

Manure Spreaders

Feed Wagons

Forage Boxes



Make	Model	T-Bar Price	Pintle Price
Badger	160	314.51	293.49
Gehl	350	335.09	307.12
H&S	180	355.46	328.91
IH	530	289.53	264.16
JD	40	315.34	290.61
Kasten	250	426.31	402.76
Massey	205	399.32	364.67
NH	516-518	370.87	345.76
NH	679	491.23	463.24
NH	790-791	501.73	526.51
NI	218-244	437.27	416.21
Patz	181	358.62	332.79

Make	Model	Main Conv. Price	X-Conv. Price
Artway	700,800	1670.00	
Artway	750,850	1867.00	
Butler	180		294.51
Butler	320		287.51
Gehl	190	398.01	
Gehl	7190-7500		197.51
Henke	KwikMix		148.51
Schuler	170	400.01	
Schuler	260	750.01	
Schwartz	7805		206.01
Weaverine	430	68.51	
Wic	45	74.01	

Make	Model	Main Conv. Price	X-Conv. Price
Badger	950-14	216.51	104.89
Dion		238.88	
Gehl	610-640	213.06	
Gehl	700-960	216.71	100.88
IH	105,110	208.88	
IH	130	220.93	
JD	110	325.86	109.81
JD	214	208.46	119.09
JD	714	211.12	135.52
Kasten	PB16'	210.28	
Tamco	Rex	212.95	90.52
NH	6	214.01	88.79
Papec	140	212.41	

SINGLE CONVEYOR CHAIN
 With Rubber Pads 10% "

887H For Butler, Jamestown, Clay, Etc. \$5.98 Per Ft.

STANDARD ROLLER CHAIN RIVETED

Chain No.	Pitch	Single Strand	Double Strand	Triple Strand
35	3/8"	1.44	1.18	1.73
40	1/2"	1.99	1.72	2.11
41	1/2"	.81		
50	5/8"	1.54	1.33	1.73
60	3/4"	1.90	1.62	2.07
80	1"	2.90	2.55	3.11
100	1 1/4"	4.48	3.98	4.73
120	1 1/2"	6.28	5.48	6.49
140	1 3/4"	8.88	7.78	9.29
160	2"	12.51	10.91	13.11
180	2 1/4"	17.51	15.11	18.11
200	2 1/2"	23.25	20.25	24.25
240	3"	38.25	33.25	40.25

NEW ANSI



COTTERED

Chain No.	Chain Pitch	Single Strand	Double Strand	Triple Strand
60	3/4"	4.08	7.58	19.12
80	1"	5.91	11.84	19.07
100	1 1/4"	8.92	16.73	32.73
120	1 1/2"	10.67	22.40	
140	1 3/4"	13.44	28.25	54.96
180	2"	15.52	32.80	67.83
200	2 1/4"	44.57	106.88	163.88

Shaft Dia.	Pillow Blocks	Two-Bolt Flange	Square Flange	Take-Up Units
1/2	10.78	10.78	10.78	18.58
5/8	11.64	11.64	11.64	18.12
1	11.64	11.64	11.64	18.12
1 1/8	15.28	15.28	15.28	21.30
1 1/4	15.28	15.28	15.28	25.84
1 3/8	18.18	18.18	18.18	25.84
1 1/2	21.38	21.38	21.38	30.87
1 3/4	23.80	23.80	23.80	33.56
2	35.88	35.88	35.88	50.03



SPROCKETS

BEARING UNITS



PRATT INDUSTRIES

CALL FREE 800-342-3522 - 800-392-3377

Best Buys in Used Equipment

COMBINES & HEADS

1978 Gleaner M2 Corn/Soybean Special, Hydro Traction, 15' Flex Grain Head, A630 Corn Head, Rebuilt Engine w/O Hours, Clean JD 6620 Combine w/16' Grain Head (Excellent Condition)
 IH 843 4 Row Corn Head- 30"
 White 8600 Combine, w/15' Grain Head, 1978
 IH 820 Grain Head, 22 1/2'
 IH 820 Grain Head, 16 1/2'

TRACTORS

IH 674, 2WD
 IH 484, 1980, 2WD
 Case IH 895 2WD, ROPS, 450 Hrs.
 MF 245, Low Hrs., 1980
 Case IH 1140, MFD, Hydro w/Loader & Backhoe (Compact Diesel, 27 HP, 85 Hrs.)
 Case IH 9170 4WD (Low Hrs., Rental)
 Case IH 2394 - 2WD w/Duals (Low Hours)
 Case IH 1120 Compact - MFD Turf Tires (Like New)

MISCELLANEOUS

Krause 28' Disc Harrow
 White 256 Disc Harrow, 13'10"
 Lely Roterra 13'6"
 IH 4 Bottom Rollover Plow, 16"
 NH L-785 Skid Steer (2)
 Pixall 1 Row Bean Harvester
 FMC-Bean 20RC Air Sprayer - 400 Gal. SS Tank
 FMC 100 Gal. 3 Pt. Sprayer w/22' Boom (Almost New!)
 Bauer Pump Unit w/Deutz F5L413FR-500/600 GPM @ 170 PSI
 IH 165 5 Bottom Rollover Plow
 Farm-Hand Dump Wagon
 Car Trailer

HAY & FORAGE

Kuhn Tedder
 NI 355 Manure Spreader 500 Bu., Tandem Axle, Surge Brakes, Hyd. Endgate & Apron Drive, Excel. Cond.
 NH 488 Mower Conditioner - 9 Ft.
 NH 276 Square Baler
 NH 268 Square Baler w/Thrower
 IH 435 ~~500~~ Baler
 Ford Scraper Blade

Farm-Rite inc.

Agricultural Equipment, Supplies & Services

SHILOH, N.J.

1-800-752-6373

