

Our 52nd Year
INTERNATIONAL TRUCKS
Sales • Service • Parts
IVECO
Parts, Service & Warranty

CENTRAL GARAGE INC.
S. 2nd St., Womelsdorf, Pa. 19567
215-589-4581



SALES - LEASING
STATE INSPECTION
ASE Certified Mechanics!

REPAIRS
All Make Trucks
And Cars

NEW TRUCKS

1993 International 4700	25,500 GVW
1993 International 4900	32,900 GVW
1993 Nissan UD 2600	26,000 GVW
1992 Nissan UD 1300, 5 Speed	13,000 GVW
1991 Nissan UD 1800	17,000 GVW

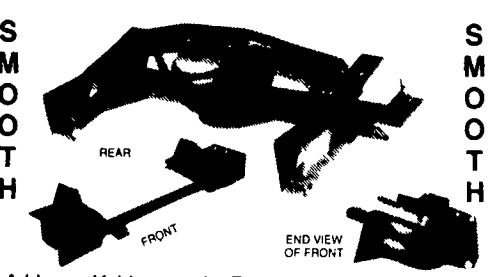
USED TRUCKS

1990 International 4900	SOLD 32,900 GVW
1988 International w/Van Body	SOLD 28,000 GVW
1977 International 1854	30,000 GVW
1976 International Fleetstar, Automatic	35,000 GVW
1978 International	19,200 GVW
1985 Ford F350 w/Dump	10,000 GVW
1976 Chevy	SOLD 23,160 GVW
1984 Iveco	14,800 GVW
1986 Iveco Z340	18,900 GVW
1988 Iveco Z340	18,900 GVW

PRE-OWNED CARS & TRUCKS
1991 Dodge Caravan - \$14,500 1986 Olds Firenza Sta. Wgn. - \$2,395
1979 Jeep - Mechanic's Special!

ASSORTED NEW AND USED TRUCK BODIES FOR SALE!
• Heavy Duty Winch •
• Grain Bodies, Stake Bodies & Van Bodies, 14 Ft. To 22 Ft.

KELDERMAN AIR RIDE



Adding a Kelderman Air Ride Conversion system to your present suspension will result in a two stage suspension system. This is not to be confused with adding an Air bag mounted above the axle. Allows adding extra spring leaves to increase load rating and still maintain Air-Ride comfort.

The bolt on basic package utilizes an air stem mounted in a convenient location to add or remove air from the system.

Optional 12 volt compressor allows changing air pressure setting on the go.

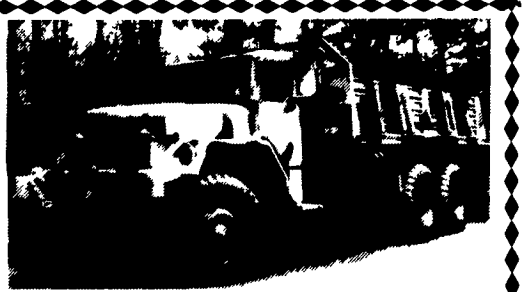
Currently available for front and rear suspension in Dodge Series 250 & 350 trucks. Available soon for Dodge Dakota models.

Also available for some Ford, Chevy, and GMC truck models. Special orders available for most motor homes. This option will smooth out the ride on those rough-road fishing/camping trips.

Ask For Dean At:

BINKLEY & HURST BROS. INC.
133 Rothsville Station Rd. • Lititz, PA 17543
717-626-4705

Willmar Fert. Spreader
Truck Body With Stoltzfus Booms,
Twin 4 Ton Hoppers, Hydra-Driven,
Modify For Other Uses Possible
Price Negotiable
Call 717-569-3296

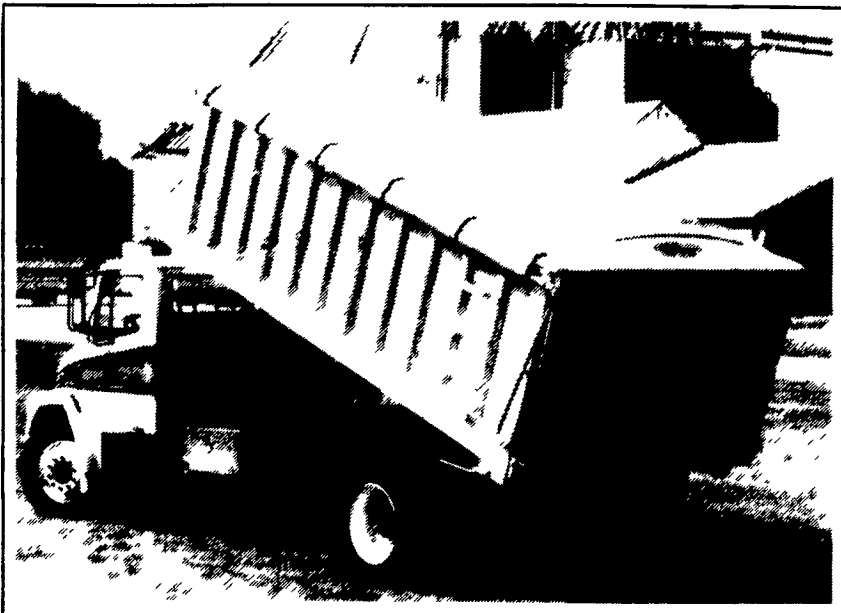


INTERNATIONAL 6x6 BRIDGE TRANSPORTING STAKE BODY TRUCKS
Front Winch, PS, Air Brake, 1400/20 Tires, 21 ft Bed with removable steel racks, Continental 6 cyl engine. Like NEW 900-5,000 Miles. Excellent for off road heavy duty cargo transporting with their all wheel drive and ability to climb a maximum grade of 60 degrees + A must for every farmer \$9,000 each or two for \$8,500 each
814-834-1018 St. Marys, Pa.



One 1975 Mack R685-237, 5 Speed, 12,000 lbs. front axle, 34,000 lb. rears, 11R22.5 tires - less than 50,000 miles on back rear - two heads and clutch and trans rebuilt, 22' Knapheide grain body wood floor, 52 inch side double rear barn doors, and grain gate, double acting hoist, tarp and bows.
Ask For Dave Graf
Day # (410) 239-8006
Evening # (410) 374-4352

EBY AGRI-DUMP BODIES
Rugged...built like a heavy dump truck



Eby Aluminum Agri-Dump Bodies pay off in dependable long-term service. Their all-aluminum construction means:

- Greater payload efficiency
- Maintenance-free service
- Substantially higher resale value.

Eby's time-tested design is available in lengths to 24' for grain bodies and 10 1/2' for general purpose dump bodies. A long list of standard features such as tarp rail, built-in steps, aerodynamic uprights and Harsh hoist is complemented by a full range of custom options, including tailgates, Wahpeton tarps and grain chute.

When you select your next grain body or general purpose dump body, consider the value that aluminum offers. It's a worry-free investment in your future.

- FEATURES/BENEFITS**
- Up to 40% lighter than steel, for greater payload
 - Designed for long life
 - Corrosion resistant, never needs painting
 - Appearance to complement any truck
 - Complete list of popular options, including tailgates, tarps and sides

- STANDARD SPECIFICATIONS**
- 6" heavy-duty extruded longitudinal sills
 - 3" crossmembers on 12" centers on body lengths to 14'; 4" crossmembers on 12" centers on lengths over 14'
 - 5"x1 1/4" extruded side posts, slanted for improved aerodynamics; 3"x2" heavy wall top rail
 - .125" thick side sheets; .188" thick floor sheet (.250" thickness optional)
 - Single acting tailgate with center flow chute, hinged top
 - Rear ladder rung with step mounted on mud-flap bracket
 - Includes mudflaps, aluminum splash shield, ICC-approved bumper and lights.



GRAIN BODIES

STANDARD LENGTHS:	12', 14', 15', 16', 17', 18', 20', 22', 24'
OVERALL WIDTHS:	96" standard, 102" optional
SIDE HEIGHTS:	48" standard, 54", 60" or 72" optional (other heights available on request)

GENERAL PURPOSE DUMP BODIES
—Ideal for landscaping work, construction, and hauling of loose aggregate or bulk commodities

STANDARD LENGTHS:	8', 8 1/2', 9', 10', 10 1/2'
OVERALL WIDTHS:	92" or 96" standard
SIDE HEIGHTS:	24" standard, 30" and 36" optional

EBY M.H. Eby, Inc.
1194 Main Street (Route 23)
Blue Ball, PA 17506
(717) 354-4971 (800) 292-4752
FAX (717) 355-2114

ATTENTION Farmers - Landscapers
Call Now For Special Pre Spring Pricing

Committed to the Agri Transportation Business

EBY USED EQUIPMENT SALE

POSSUM BELLY TRAILERS

- 1987 Eby 48'x96"x13'6" Cattle/Hog Combo (Jailhouse)
- 1984 Barrett 46'x96"x13'6" Cattle Trailer Jailhouse
- 1983 Barrett 48'x96"x13'6" Cattle Trailer
- 1983 Wilson 45'x96"x13'4" Cattle/Hog Combo
- 1982 Wilson 45'x96"x13'2" Cattle Trailer
- 1982 Wilson 45'x96"x13'6" Cattle-Pot

STOCK TRAILERS

- 1988 20'x8' Eby Aluminum Gooseneck
- 1986 20'x8' Aluminum Walling
- 1985 Super Goose 20'x6'x6'10"
- 1983 Eby 18'x7'6"x6'6" Gooseneck
- 1982 Triggs 30'x8'x6' Fiberglass

BODIES

NEW

- 1993 21'x6'6"x96" Double-Decker

Call For Special Pricing

- (4) 12' Eby Aluminum Cattle Body
- 17' Eby Cattle Body
- 21' Eby Aluminum -Double Deck
- 24' Eby Aluminum Body
- 20' Fruehauf - Deck-Rail & Decking
- 8 1/2' Eby Aluminum - Chicken Body

Trailer Hitches
Brake Controllers
Pintle Hooks
and Much More!
• Free Catalog •
Free UPS/Credit Cards
Weaver Distributing
1-800-Weaver-D

1992 Eby Aluminum Gooseneck Cattle Trailer
7 1/2' x18'
412-297-3934 or 412-297-3182

E-TOWN DODGE

- 1989 Dodge 8' Pick Up Bed, Excellent Shape-Call
- 1989 Chevy C-1500, 27,000 Miles
- 1992 B-350 Maxi Wagon, 15 Passenger, 20,000 Miles
- (6) 1993 Diesels In Stock Club Cab & Regular Cab, 5 Speed & Auto.

M.H. Eby, Inc.
1194 Main Street (Route 23)
Blue Ball, PA 17506
(717) 354-4971 (800) 292-4752
FAX (717) 355-2114

CALL MILTON HESS
717-367-6644
717-653-6667
Elizabethtown, PA