

32 MISCELLANEOUS

WANTED TO BUY:

Old Loghouses, Summer Kitchens, Early Timber Frame Houses For Removal Old House Interior Salvage, Old Wide Attic Flooring, Old Wide Roof Boards, Chestnut Logs, Grainery Boards (No Whole Barns) I Travel The Farthest, Pay The Most, and Buy On The Spot!
215/857-5504 or 1002 Anytime!

LIVE GAME FISH

Fingerlings and Adults, Large and Small Mouth Bass, Spotted and Rock Bass, Bream Crappies, Trout, Channel Cats, Bullheads, Walleyes, Perch, Minnows, Northerns, Pickeral, Muskies, Red Gills, Mullet, Carp, Eels, Turtles, Frogs, Israeli Carp Also Aquatic Plants and Water Lilies. COLORFUL CATALOG \$2.00.
Truck, Air and Parcel Post Delivery.

ZETTS FISH HATCHERIES
DRIFTING, PENNA. 16834
Phone: 814-345-5357



Sold As A Group Box of Assorted Toy Tractors:
(2) Case 600 Special Editions,
(2) Part Mart 5000,
(1) JD 5020 Museum 1991, (1) JD 4020 Precision, (1) JD D on Steel '70 Version in Box, Scale Model White Oliver 1855.
Monday thru Friday 7 PM to 9 PM
(410) 398-7023

34 AUTOS

100 (50) lb bags, fine glass bead, \$5/per bag
609-894-2849

1985 Pontiac Trans Am, V8, 5spd, loaded, low mileage, new tires, excellent condition (717)664-3683

1991 Ford Explorer, Eddie Bauer, 4WD, 5spd, leather, C-D, sunroof, every factory option available plus, phone, alarm, radar, class III hitch, garage kept, 47,000M, \$18,750 OBO Harford County (410)893-8727

4 s/s Cragars 14 inch 3,000 miles on tires \$500 (717)367-0895 Lancaster County

Bittner Boys, Inc.
Quality Chevy V8 Motors for Cars, Trucks and Boats. We Install And Deliver.
35 Years Of Experience
717/762-7940

90 Olds Calais 4 Dr, Blue, Quad 4 Aluminum Wheels Loaded, 10,000 Miles
\$8,200

90 Buick Skylark, Blue, ~~SOLD~~ 41,000 Miles, 4 Dr.
\$6,100

90 Plymouth Horizon 4 Door, 13,000 Miles, Stick
\$4,400

87 Plymouth Caravelle SE, 41,000 Miles, ~~SOLD~~
\$3,600

87 Honda Civic DX, 3 Door, Automatic, A/C, 86,000 Miles
\$3,400

91 Honda Civic DX, 4 Door, Automatic, A/C, 28,000 Miles
\$8,850

Burkhoppers Auto Danville, PA
717-437-3848

35 TRUCKS & TRAILERS

1978 Mack Tandem Tractor (Model R686ST), 300 Engine, Mack 6 Speed Trans, 12,000 Lb. Front Axle, 44,000 Lb Rears, Air Slide 5th Wheel 410-239-8006 Day 410-374-4352 Evenings Dave.

1978 White Roadboss, tandem w/300 Mack engine, Jake brake, A/C, PS, air ride, \$7,000 1979 Benson dump trailer, 26', \$7,000 Bucks County (215)794-8457

1979 International 1710B cab/over, MV404 gas, 5+2, 25,000 GVWR, box. 24'L by 9'1"H inside, 2,500 lb liftgate, new parts all over, \$6400 OBO. Yale 4000 lb electric pallet truck, \$950 OBO. 410-893-1138.

1981 Chevy truck w/duals, 11,000 GVW, w/aluminum dump box. Lancaster \$6800. 717-664-4777.

1981 Ford 800, 429 gas, 32,000 GVW, 5+2, air brakes, PS; 1979 Ford 800, 429 gas, 32,000 GVW, 5+2, PS, air brakes 301-877-9889.

1983 GMC 26,000 GVW, low miles w/2 year old 16' Knapheide dump body, \$10,500. 215/756-3516.

1986 Dutchie flatbed trailer, 22' w/3 7000# axles, w/mini 5th wheel hitch, electric brakes, \$3,800. (717)786-7502.

1986 Trailmobile, 48'x96", air ride, side kit, full tarp, new tires, \$8000; 63" walk-in bunk off 1988 Peterbilt, \$3000. 215-286-5488.

1989 Ford XLT E150, 8 passenger van, 302 EFI, auto, PS, PB, AM-FM, dual air & heat, privacy glass, red & silver, local 1 owner, excellent condition, \$9,950 717-733-2873

1990 Chevy G20 sport van, 5 passenger, 305 auto, PS, PB, air, cruise, tilt, privacy glass, new radials, charcoal, \$10,500 717-733-2873

1987 F350, 12' refrigerated body, diesel, 4-speed, good condition, \$7100 215-723-4542.

1988 Eager Beaver, 9HDB, tag-a-long trailer, excellent condition, hardly ever used since new, 21' overall length w/ramps, electric brakes, excellent rubber, \$4500 609-451-3877 8-5PM.

1976 Loboy ramp trailer, 48' new winch \$4000; 1977 International Transtar tractor, 290 Cummins, S/A, PS, AC, AR, not running, needs new cam shaft, make offer. 717-837-1663 ask for Fred.

1977 Int. 1850 dumptruck, 35000-GVW, 3208 CAT diesel, 5+2, 1100-20 tires, \$4500. 717-799-5594.

1975 Mack U Model tandem axle trailer, 237 engine, 5 speed Mack trans, connected to 1971 Trailmobile trailer, 40' tandem axle w/center mounted H model Prentice loader, pulp wood grapple and pony motor, fair condition, tractor & trailer together \$6500 OBO 215/626-2555.

A&J Auto Sales

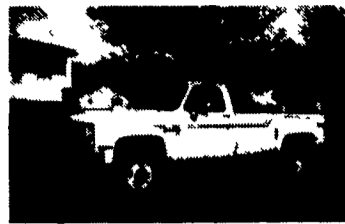
798 E. Main St.
Rt. 322 East
Ephrata, PA 17522

717-733-2873



1988 Dodge D250 HD, 3/4 Ton, 4x4 With 8 Ft. Midwest Stake Body Dump, 360 Auto, PS, PB, AM-FM, Red, Ex. Cond.

\$7,900



88 Chevy K30 4x4 Dually, 350 FI, Auto, PS, PB, Air, AM-FM Lock-Out Hubs, 54,000 Miles, 1 Owner, White

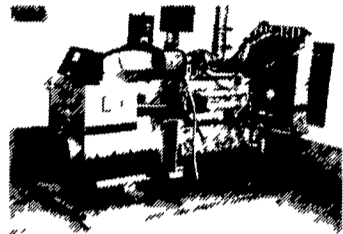
\$10,500



1987 Ford F250 4x4, 300 EFI, 4 Speed, PS, PB, AM-FM, Dual Tanks, 6,600 GVW, New Radials, 1 Owner, Red

\$7,900

POWER SYSTEMS ELECTRIC, INC.



SPECIALIZING IN GENERATOR SALES, SERVICE AND RENTALS (717) 933-5617

220 KW Cummins Diesel, Used
100 KW A-C Diesel, Low Hrs.
80 KW PSE LPG
85 KW Kohler LPG Low Hrs.
65 KW PSE Diesel, Weather Housing
25 KW Onan PTO
15 KW Winpower PTO

ATTENTION COLLECTORS AND VENDORS PUBLIC AUCTION

8th ANNUAL CONSIGNMENT SALE SATURDAY, MARCH 6, 1993 8:00 A.M.

Auction to be held indoors in the heated Exposition Building at the Lebanon Area Fairgrounds, off Route 72 at the corner of Rocherty and Cornwall Roads, South of Lebanon, Lebanon County, Pennsylvania.

• Car Corral •
• Parts •

Continuous Selling Of Parts Cars may be put in the car corral or in the car auction at 3 P.M. outside.
For more information call: Bill Miller or Kurt Froebel R.D. 2, Box 505 R.D. 1, Box 219AA Fredericksburg, PA 17026 Myerstown, PA 17067 717-865-4281 717-933-8690

Auctioneer Services (4) Provided By Your Auto Auction, Inc., Jonestown, PA AU-000653-L Conditions by:

PA DUTCH REGION A.A.C.A.

Breakfast and Lunch Served by Pa Dutch Region
TERMS: CASH - Personal Checks accepted only by prior approval - No Bank Drafts accepted. Out-Of-State persons must supply two (2) proper forms of identification.
NOTE: Some cars to be offered with reserve. TIRES WILL NOT BE ACCEPTED.

FARM RECORD BOOK for all farm enterprises Easy record keeping \$4 95
(717) 872-1976 evenings or send to: Farm Record Book 101 Tomahawk Dr., Conestoga, PA 17516

33 RECREATIONAL VEHICLES

FOR SALE 1984 GMC hit-top van, low mileage, equipped for camping. Call (717)274-8521.

FOR SALE. Polaris 400 and 600 Indys w/200 miles, many extras, showroom condition 717-426-3135

Polaris Snow Mobile Model Indy 600, Water Cooled Engine, Low Miles, \$2600 410-838-4471

Snowmobiles. 1993 Ski-doo Mach 1, top of the line model, 670 cc, w/extras, brand new, \$5,500 1992 Ski-doo Mach 1, low miles, as new condition, \$4,500 1980 Ski-doo Blizard 7500, liquid cooled, very good condition, \$1,000 1988 Kawasaki Jet-ski, 650SX, \$2,500. (609)561-8270.

WANTED TO BUY:
Old magazines dated before 1945.
Write to: Art Brandt 830 N. Queen St. Lancaster, PA 17603

HALDEMAN Ford KUTZTOWN

Experience The "Haldeman Difference"

1993 FORD ESCORT LX 3 DR. \$9699*
1993 FORD RANGER XLT \$9799*
1993 FORD PROBE GL \$13,499*
1993 FORD TAURUS GL 4 DOOR \$14,499*
1993 FORD EXPLORER SPORT 2 DR. \$17,999*
1993 FORD F150 4X2 PICKUP \$11,999*1986 FORD CLUB WAGON \$4,995
1984 FORD F-150 \$4,995
1988 FORD BRONCO II XLT SW 4X4 \$10,495
1991 FORD EXPLORER XLT \$18,995
1991 JEEP CHEROKEE LTD. SW 4x4 \$19,995
1992 FORD EXPLORER SW \$21,995

<p>'93 FORD ESCORT LX 3 DR. \$9699*</p> <ul style="list-style-type: none"> • 1.9L SEFI 4 Cyl. • Power Steering • AM/FM Stereo/Cass • Air Conditioning • Rear Defroster • 5 Speed 	<p>'93 FORD RANGER XLT \$9799*</p> <ul style="list-style-type: none"> • 2.3L EFI I-4 Engine • 5 Speed • Sliding Rear Window • Aluminum Wheels • Power Steering • AM/FM Stereo/Cass Clock • Chrome Rear Step Bumper <p>13 IN STOCK!</p>
<p>'93 FORD PROBE GL \$13,499*</p> <ul style="list-style-type: none"> • 251A Pkg • 2.0L 4 Cyl Engine • Automatic Transmission • Rear Defroster • 7 other Probes in stock at similar savings • Air Conditioning • Tilt Columns • Conv Group • Bucket Seats 	<p>'93 FORD F150 4X2 PICKUP \$11,999*</p> <ul style="list-style-type: none"> • XL Trim • Argent 4 Speed Bumper • 4.9L EFI V6 • All Season Tires • Headliner/Insulation Pkg
<p>'93 FORD TAURUS GL 4 DOOR \$14,499*</p> <ul style="list-style-type: none"> • 3.0L V6 • Auto Transaxle • Rear Defroster • Air Conditioning • Speed Control • Rear Child Locks 	<p>'93 FORD EXPLORER SPORT 2 DR. \$17,999*</p> <ul style="list-style-type: none"> • 4L EFI V6 Engine • 5 Speed • Manual Trans Spec Pkg • P235 OWL All-Terrain Tires • Air Conditioning • Trailer Towing Pkg • Cassette/Clock

<p>USED CARS</p> <ul style="list-style-type: none"> '84 MERCURY MARQUIS WAGON \$3,995 '85 DODGE ARIES SW \$2,995 '87 CHRYSLER CONQUEST CPE. \$6,995 '88 FORD TEMPO LX SDN \$4,995 '88 FORD CROWN VIC. LX \$5,995 '89 FORD CROWN VIC. \$11,695 '90 MERCURY GRAND MARQ GS \$11,995 '90 GEO PRIZM \$6,995 '91 MERCURY SABLE SW \$13,995 '91 CHEVY CAMARO \$11,495 '92 FORD T-BIRD \$13,995 '92 FORD CROWN VIC. \$17,995 	<p>SPECIAL PURCHASE FORD</p> <ul style="list-style-type: none"> TAURUS '92 FORD TAURUS GL SEDAN \$13,999 TEMPO '92 FORD TEMPO SEDAN \$8999 ESCORT '92 FORD ESCORT LX SDN \$8999 	<p>Visit Our TRUCK CORRAL</p> <ul style="list-style-type: none"> '86 FORD CLUB WAGON \$4,995 '84 FORD F-150 \$4,995 '88 FORD BRONCO II XLT SW 4X4 \$10,495 '91 CHEVY ASTRO VAN CL \$11,495 '91 FORD EXPLORER XLT \$18,995 '91 JEEP CHEROKEE LTD. SW 4x4 \$19,995 '92 FORD EXPLORER SW \$21,995
---	---	--