

Public Auction Register

Closing Date Monday 5:00 P.M.
of each week's publication

FRI. FEB 26 - 10 30AM, Mayerdale Farms Complete Dispersal Selling J D & N.H Machinery, Holstein Cattle & Dairy Barn Equipment Located Honeyoe Falls, New York Pirrung Aucts., Inc 716-728-2520

FRI FEB 26 - 10 30AM, Farm Dispersal Located At The Farm On Ghent-Black's Pond Road - From Ulster & Rte 220 Cross The Bridge Go Up Ghent Hill - 3 Miles - Turn Right - 1 Mile To Farm Or 4 Miles West Of North Rome Watch For Arrows Owners, Jeffrey & Barbara Knecht Sales Managers & Aucts., Glenn P Shores & Howard W Visscher.

FRI FEB. 26 - 11AM Dairy cattle, machinery and produce, Located at 1556 Route 19, 2 miles South of Wyoming, 4 miles N. of Warsaw, 15 miles south-east of Batavia, 7 miles south of Pavilion Tom and Diane Stroud, owner. Wm Kent, Inc, aucts.

FRI. FEB. 26 - 11AM, Brook Honey Reg. Holstein Dispersal. Located At The Farm On Todd Road, Chester County, Pa., Half Mile North Of Honey Brook Go North On Route 10 From Route 322. From Morgantown Go South On Route 10. Auction Held For, John Omar & Naomi Stoltzfus, Steve & Steve Jr Petersheim, Auct

FRI. FEB. 26 - 1.30PM, State Graded Feeder Pig Sale Located At Carlisle Livestock Market, Inc., Exit 13, South Off I-81, Left Onto Alexander Spring Road 717-249-4511

FRI FEB 26 - 3PM Antiques, collectibles, jewelry, coins & personal property At Springetts Fire Co Social Hall, 3013 E Market St., York, Pa Brial L Gilbert, Jacob A Gilbert, aucts

FRI FEB. 26 - 5PM Winross & Ralstoy Collection at Alderfer Auction Center, 501 Fairground Rd., Hatfield, PA 19440 Alderfer Auction Co

FRI FEB 26 - 7 30PM Cattle Exchange, Dairy Classic Held at New Holland Sale Stables. 140 Head of quality Holsteins.

SAT. FEB. 27, Strasburg Fire Co. Will Be Holding Their 19th Annual Public Sale

SAT. FEB. 27, Very Fine Antiques. Located At 1369 W Main St., Ephrata, Pa For Arlene H. Minnich Estate Paul E And Aaron E. Martin, Aucts.

SAT. FEB 27 - W L Palmer & Al Withers, Lewisetta (East of Warsaw), Ownby Auction & Realty Co., Inc.

SAT. FEB 27 - 8:30AM, Tractors, Farm Equipment, Riding Mowers & Misc., Collectibles & Butcher Tools Located From I-83 Exit 6E Take Rt. 74 S 1 Mi To Campbell's Music Store Turn L Onto Oak Rd. & Go 1 1/2 Mi. To Sale, Or From Dallastown Take Fruityn Dr. To Raab's Fruit Farm Turn L & Go 1/2 Mi. To Sale Follow Signs! Melvin Haines & Ralph Brenne-man, Aucts.

SAT FEB 27 - 8:30AM, Public Sale, 19th Annual All Day Sale Of Horses, Mules, Farm Equipment, Hardware, Tools, Household Goods, Guns, Coins, Quilts, Groceries, And Much More Located At The Strasburg Fire Co., 46 West Main St., Strasburg, Pa By The Strasburg Fire Co.

SAT FEB. 27 - 9AM Lazarus Farm Complete Dispersal (3 Generations Accumulation). Farm Machin-

ery, 3 Tractors, Combine, Antiques, Primitives, Household Goods, Shop Tools, Etc. All Day Sale! Located On Farm 2 Miles NE Of Potts Grove, Pa., Along Mexico Road, 5 Miles E Of Milton, 6 Miles

W Of Washingtonville. Auction Arrows Off Rt. 642 Just E Of Potts Grove. Owners, Daniel K. & Louise Lazarus. Fraley Auction Company.

PUBLIC AUCTION

OF VALUABLE REAL ESTATE, CAR, ANTIQUES, FURNITURE, GLASSWARE, MASONRY TOOLS, COINS & HOUSEHOLD GOODS
FRIDAY, MARCH 5, 1993
10:00 A.M.

LOCATED AT: 5821 Lincoln Highway, Cap, Sallsbury Township, Lancaster County, PA. From Route 41 & Route 30 Intersection In Gap, take Route 30 East approximately 2 miles - watch for signs.

★ REAL ESTATE (TO BE SOLD AT NOON) ★

Real estate consists of a 50 year old cape cod dwelling with 2 or 3 bedrooms, full bath, eat in kitchen, living room with stone fireplace, den, full basement with outside entrance, attached 1 car and detached 28'x32' 2 car garage. Oil hot air heat, on site water & sewage. Lot size approximately 7/10 acre that is level with frontage on 2 streets. Prefect starter home, or investment. This property deserves your attention.

CALL AUCTIONEERS FOR COMPLETE BROCHURE OR PRIVATE SHOWING.

★ CAR (TO BE SOLD AT NOON) ★

1968 Pontiac G.T.O. 2 door with vinyl top in running condition and 87,000 miles.

★ TOOLS AND LAWN & GARDEN ★

John Deere S6 riding mower; 19" electric Toro, cement mixer and troweler (poor condition); many stone and brick hammers; 15 pcs. scaffold; mason trowels; levels; transit and tripod; shop vac; bench grinder; hand saws; spoke share; brace; shovels; tamper; sledge hammers; chisels; files; axe; small aluminum extension ladder; bilck plane; wheelbarrow, hatchet; lantern; firewood; asst. hand tools.

★ TV & APPLIANCES ★

25" Zenith color TV with remote, Frigidaire side by side refrigerator-freezer, Speed Queen washer.

★ ANTIQUES & GLASSWARE ★

Vases; figurmes; pressed & cut glassware, depression glass; silver service & silverware; salt & peppers, tumblers; stemware; shot glasses; clown cookie jar, crocks; Japanese plates, carnival glass, Flo Blue plate, German bowls, Homer Laughlin china, salts, glass basket, bean pot, ironstone platters

★ ANTIQUES, FURNITURE & HOUSEHOLD GOODS ★

3 pc bedroom suite; kitchen table and 4 chairs, blanket chest, small dropleaf table; dresser, trunks; stand with claw feet; chairs; sofa bed; folding chairs; end tables; drying rack; rocker; floor & table lamps; stools; TV tables, coffee table; magazine rack; beveled glass mirror; clocks; pictures; mirrors; candleholder, costume jewelry; pocket watches; pocket knives; scissors; local advertising pieces; picnic basket, baskets; sewing supplies; ashtrays; books, file box, bibles, post cards; canning jars and lids, pots; pans, kitchen utensils; mixer; Emerson microwave; cast iron skillet; pie plates; casseroles; Christmas ornaments; jewelry box; washboard; button-hook; vacuum cleaner; rug shampooer; doilies, embroidery; afghan; lap robe; tins and more.

★ WINCHESTER MODEL 270 .22 CAL. RIFLE ★

★ COINS (TO BE SOLD AT NOON) ★

1899 silver dollar; 1842 half dollar; 1925 stone mt half; 1857 flying eagle penny; 1875-1909 indian head pennies, 80 pcs.; wheat pennies; 1843, 1850 half dimes; 1866, 1867 nickles; 1805, 1873 3 pcs.; 1852 large cent; silver dimes; 1976 Olympic coin set.

AUCTIONEER'S NOTE: Great opportunity for first time home buyers. Come early for this one.

PAYMENT TERMS: Personal Property- Payment in full day of auction with cash, certified or approved check. Real Estate - 10% down payment day of auction - balance due within 45 days. Transfer taxes paid by buyer.

Auction Conducted For: Estate of

ERIC N. SWANSEN
Fulton Bank Administrators

Auction Conducted By:



Stephen J. Barr - AU-002422-L
James S. Davis, Jr. - AU-002421-L
Gap, PA 17527 • (717) 442-9221

Plenty of Good Food Available

PUBLIC AUCTION
3 TRACTORS, OLIVER 1755 TRACTOR, FARM EQUIP., 1969 FORD F-350 TRUCK
TUESDAY, MARCH 2, 1993
At 11:00 A.M.

Located along Natfzingertown Rd., Berks Co., PA. Travelling East on Old Rt. 22, 1/2 mile East of Shartlesville turn right onto the Shartlesville/Centerport Rd., go approx. 1 mile to second black-top road, turn right onto Natfzingertown Rd. for approx. 1 mile, go straight across intersection to first farm on left.

TRACTORS- Oliver 1755 w/new Cummings 5.9 diesel engine w/40 hrs. (sold w/ reserve), Farnall M (rebuilt 4 yrs. ago), Farnall H, 1969 Ford F-350 w/8 ft. stake body, hyd. tailgate, 11,000 lb. weight.

HAYING EQUIP. - J.D. #1219 mower/conditioner, Case #555 haybine, N.H. #276 baler, Int. #45 baler, NH #256 hayrake w/ dollie wheels (4 yrs. old), Int. #14 hayrake, NH #55 24-ft. elevator, 7'x16' metal sided hay wagon (2 yrs. old).

MISC. EQUIP. - Int. #93 combine w/cab good engine (combine needs work), 6'x12' grain wagon, Baltmatic #80 3-pt. spin spreader (1 yr. old), Century 3-pt. boom sprayer, J.D. #246 2-row 3-pt. corn planter, Int. #350 8-ft. transport disk w/Gandy fertilizer box, Clark 8-ft. drag disk, J.D. 2-btm. pull type plow, Oliver 2-btm. 3-pt. plow, Bolens 5 hp riding mower, Case 8 hp hydro tractor w/deck, Lincoln 225 amp welder w/16 hp Briggs motor 6000 watt 115-230 volt generator (215 hrs. on unit)

MISC.- acerator, AC cylinder w/15' hose, fuel tank w/pump, new 69 Ford fenders, corn seed, timothy seed, chicken feeders & crate, 1" water line, small farm items.

Auct. Note: Be prompt, approx. 2 1/2 hr. auction.

Terms: Cash or PA check, day of auction. No out of state checks.

Auction for:

DAVID M. DISSINGER

Auctioneer:

Dennis F. Wagner, AU-001427-L

Phone: (215) 562-7445

Refreshments Available

PUBLIC AUCTION
OF 30 ACRE FARM
FARM AND BUTCHER EQUIPMENT
TOOLS - GUNS - ANTIQUES
AND PERSONAL PROPERTY
SATURDAY,
MARCH 20, 1993
9:00 A.M.

For The Estate of Lester E. Spangler
Location: Lane Farm Black Oak Road, Swatara Township, Lebanon County, Lebanon, Pennsylvania.

From Lebanon take Rt. 72 north and from Jonestown take Rt. 72 south to Bachman's Used Car Lot. Turn west on Horst Road to T. Turn right on Mt. Ville Drive, go to Black Oak Road, turn left go 1/4 mile to Auction on the right. Watch for signs.

Real Estate 1:00 P.M.

The property consists of 30 acres, 26 acres of which are tillable. There is a stream flowing through the property. The house is a 2 1/2 story log home built in 1816 with aluminum siding and storm windows. The first floor consists of a kitchen with walk in fireplace, a large room which could be used for a family room, living room and dining room. The second floor has 4 bedrooms with a full bath with shower. The heat is furnished by a new oil hot water furnace with summer/winter hook up. There is a 200 Amp service.

Other buildings on the property consist of a 4 bay bank barn built in 1896 with enclosed barn yard set up for steers or horses. There is a new 3 bay cement block garage (30'x45') with 3 overhead doors, one oversized. In addition to the barn and garage there is a pole or implement shed (24'x32'), chicken house, corn crib and a summer house with an upstairs, cellar and cold cellar. All of the buildings are in very good condition.

For inspection of this property please call the auctioneers.

Conditions are 10% down on day of auction and the balance due in 60 days.

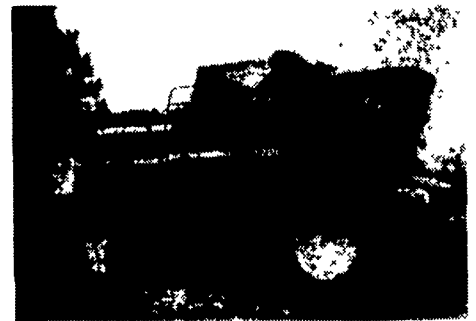
Conditions by
HATTIE SPANGLER

Attorney Thomas N. Cooper

Auction Conducted by:
EBERSOLE'S COUNTRY AUCTION
David L. and Roy I. Ebersole,
Auctioneers Lic. #AU-000246L & 248L
Phone (717) 867-1041 or
(717) 838-4950

Full ad to follow

PUBLIC AUCTION
J.D. TRACTORS - J.D. COMBINE - TRUCKS - EQUIPMENT
SATURDAY, MARCH 6, 1993
10:00 a.m. (rain or shine)



Directions: From the Bay Bridge follow Rt. 50 East to Easton, Md. - Turn South onto Rt. 322 (Easton Parkway) and follow to Rt. 333 (Oxford Rd.) - Turn right onto Rt. 333 and go approx. 6.5 miles towards Oxford, Md. and Auction will be on the left. (Signs Posted)

COMBINE: 1988 JD 7720 Titan II w/4WD & JD 920 Flex Head Grain Table (approx. 1125 hrs.)
TRACTORS: 1989 J.D. 4555 MFWD w/cab & 18.4x42 duals (approx. 1385 hrs.), 1983 J.D. 4450 MFWD w/cab, 1976 J.D. 4430 w/cab & duals.

EQUIPMENT: Int. model 710 7x16 onland plow, J.D. 1350-1450 6x18 semi-mount plow w/ double pivot hitch, Brillion 15' Chisel Plow, 11' Chisel plow, Brillion 5 Shank Ripper, J.D. 20' model 230 Disc, Kent 20' C Shank Field Cultivator, Unverferth 23' Rolling Harrow, J.D. 7000 Conservation Planter 6 row 30" w/Liquid Fertilizer-Monitor & Springtooth mounted in front, J.D. 8300 26x6 Grain Drill w/press wheels, A.C. mdoel 600 9 row 30" No-till Planter, Buffalo 6 row 30" No-Till Cultivator & Buffalo guidance system, KMC 9 row 20" S-Tine Cultivator, JD 20' Rotary Hoc, Pull type Sprayer w/30' booms, (2) Brillion Cultimulchers 13' & 15', Woods model 121 Rotary Cutter 10', Werts 3 way front mount hyd. Dozer Blade, Speed King 58' Auger, Agri Tec Sprayer, Bush Hog 5' Rotary Cutter, (2) Poly Tanks 1600 gal. & 2100 gal., V-Blade Ditcher, (2) Front Mounted Spray Tanks and other items.

TRUCKS: 1973 Int. 1700 w/16' Midwest Dump Body (Md. Inspected) 1973 Int. 1700 w/15' Kruger Dump Body (Md. Inspected).

AUCTION TERMS: Cash or Approved Check w/current letter from bank guaranteeing funds, unless you are known by the Auctioneer.

Owner: **EASON BROS.**
(410) 822-0625

A. CURTIS ANDREW AUCTION, INC.
Auctioneers: Curtis Andrew - Mike Roe, CAI
(410) 479-0756 or 754-8826