

Farm Wife Undergoes Liver Transplant

FRIENDS COVE (Beford Co.)
— The Deputy family who represented Bedford County in the 1991 Lancaster Farming dairy issue, face astronomical medical expenses and emotional stress as Susan, wife of Edward Jr. and mother of three teen-age daughters, has undergone her third liver transplant at Presbyterian Hospital in Pittsburgh.

Hospitalized since mid-November, the Deputys are experiencing huge expenses and the community has banded together in a fund raising effort.

The Deputy family, Edward Sr., and their two sons, Ed Jr., and Richard, moved to Bedford County from Delaware in 1974.

All combined, the Deputys farm about 600 acres of Bedford County farmland and milk more than 180 Holsteins. They have an additional 150 young cattle.

Susan has helped on the farm and particularly enjoys a large garden in which she recently started her own strawberry patch.

The girls have been active in 4-H and St. John's United Church of Christ where Susan also sang in the choir and occasionally played

the organ.

A fund raising turkey-ham dinner is being sponsored by the church on Saturday, February 27. Tickets are \$7 for adults and \$4 for children. Hours are 3 until 7 p.m. and advance tickets are required. They can be obtained by calling the church at (814) 623-8817.

Susan first developed symptoms of liver problems about ten years ago. Downhill progression caused her to be life-flighted to Pittsburgh in November.

A first transplant failed when several clots developed and a second transplant was required. In January, Susan was given a second transplant, but it was not successful. Doctors believe the liver may have been damaged in transport. At presstime, Susan was undergoing a third transplant and it is not known if it will be successful.

While the family does have insurance, it is nearing the one million cap. In addition, expenses for medicine, telephone calls, and traveling back and forth to the hospital have become astronomical.



Berks Society 4

Berks County Society of Farm Women Group 4 met at the Boyertown home of Evelyn Becker with 8 members answering roll call to,



Susan Deputy

Contributions can be made to "Susan Deputy Fund," in care of the First National Bank of Everett, Everett, Pennsylvania, 15537.

Lancaster Society 20

Lancaster Farm Women #20 met February 4 at the home of Valaria Ferguson at Unionville with Jane Ferguson as co-hostess. Following refreshments Jane had the devotions. For the program Rev. John Ferguson gave each member a dollar bill (not to keep, of course) and spoke on the different parts of it, Washington, the scales, the large letters to the left of Washington, the pyramid, "In God We Trust," etc. It was a very interesting program, for we handle dollars all the time but never take time to think of the meaning of the different sections.

The president, Nancy Axe, presided at the business meeting and prior to the reading of the minutes for the Roll Call each brought a Valentine gift and they were then divided among the three shut-ins. The Sunshine Committee reported 1 bouquet and 5 cards sent. Definite plans were made for the serving the luncheon for L. B. Herr & Co. October 21 was the date set for visiting at Conestoga View.

The president gave a report on the County Board Meeting she attended. The project is to help repair the Home Center. May 26 is the Spring Rally.

In March members will meet at the home of Vera Herr with Jean Ressel as co-hostess. Members will sew cancer pads and have a covered dish dinner.

"Name a special day in February."

President Mary Fizz conducted the business meeting and reported on the State Convention in Harrisburg which she attended.

A Valentine Party gift exchange was enjoyed during the social hour.

The next meeting on March 2 will be at the home of Elsie Rothenberger, Powdermill Hollow Road, Boyertown.

Berks Society 3

Group #3 of the Berks County Society of Farm Women held its January meeting at the home of Mary Hill, Boyertown. Eleven members were present.

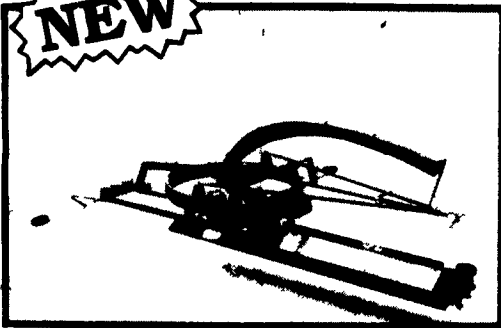
Secret pal names were exchanged for 1993. Canned food items will be collected for the Greater Berks County Food Bank. The annual Spring Rally will be held on May 26 in Hagerstown, Maryland.

The next meeting will be at the home of Eleanor Bissinger, Boyertown. A driver's test video will be the program for the evening.

PatZ THE PROGRESSIVE COMPANY

Ring-drive, dual-auger silo unloader

NEW



- Stainless steel auger guard.
- Dual offset wall cleaners.
- All the features you need are standard equipment.

- Adapts to single-cable, 3-cable tripod or 3-cable hexapod suspensions.
- Ring drive with power transmitted to a gearbox and drive sprocket at the ring.
- A radial pin overload clutch protects the drive system.
- Both augers include ripping teeth that overlap and interlock.
- 1/4-inch-thick auger flighting.
- Giant 28-inch blower with stainless steel blower band.
- 4 cupped, cast-iron, swinging paddles with 1" stainless steel pins.
- Proven-reliable Patz electrical joint.
- Electrical control panel with ammeter and remote pushbutton station.
- Heavy-duty double-sealed auger gearbox with synthetic gear lubricant.
- COR-TEN® steel frame combines high strength with corrosion resistance. (COR-TEN is a registered trademark of U.S. Steel Corp.)

— WE OFFER THE MOST COMPLETE LINE OF SILO UNLOADERS IN TODAY'S MARKET —

■ **Model 8800**
Dual-Auger
Surface-
Drive Silo
Unloader

■ **Model 8810**
Dual-Auger
Center-
Drive Silo
Unloader

■ **Model RD-820**
Ring Drive
Silo
Unloader

■ **Model 98B**
Surface-
Drive
Silo
Unloader

Mixing T.M.R. the Way You Want

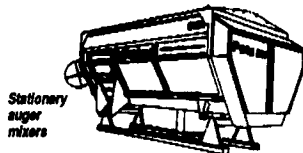
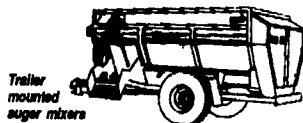
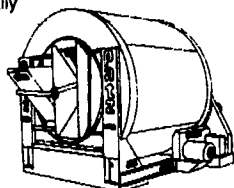
Tumble Mixers

- Tumble mixing plus a central spiral circulator moving ingredients to the back of the drum while flitting moves ingredients forward.
- No internal bearings.
- Low maintenance — only 3 grease fittings.

Affordable financing from Patz Financial Services

Open-Top Mixers

- Four notched augers mix fast—even square-baled dry alfalfa in limited amounts
- Self-aligning auger bearings mounted outside. Flanged auger tubes for easy removal.
- Planetary gear reducer and roller chain reduction power the augers. Roller chains operate in sealed oil bath.
- On trailer models, the discharge door and discharge augers are controlled hydraulically



"36 Years of financing farmers needs."

SEE YOUR NEAREST PATZ DEALER

ALEXANDRIA
MAX ISENBERG
814-669-4027

BALLY
LONGACRE
ELECTRIC
215-845-2261

BEDFORD
BENCE'S FARM EQUIP.
814-623-8601

BELLEFONTE
LUCAS BARN EQ.
814-383-2806

BELLEVILLE
MILLER-LAKE Inc.
717-935-2335

HOP BOTTOM
LENOX FARM SUPPLY
Kurt Kulick
717-289-4349

LEBANON
CEDAR CREST
EQUIPMENT
717-270-6800

MECHANICSBURG
JOHN JONES
717-766-8582

MIFFLINTOWN
ZUG FARM &
DAIRY EQUIPMENT
717-463-2806

ORANGEVILLE
FRANKLIN D. HESS
FARM EQUIPMENT
717-925-6939

QUARRYVILLE
UNICORN FARM
SERVICE
James E. Landis
717-766-4158

SHIPPENSBURG
WITMER EQUIPMENT
SERVICE
717-532-6139

SOMERSET
GROVE EQUIP. SALES
Mark Knepper
Cliff Lynn
814-445-6306

HAGERSTOWN, MD
TRI-STATE
FARM AUTOMATION
301-416-7340

KENNEDYVILLE, MD
PINDER SERVICE
CO.
410-778-0799

WESTMINSTER, MD
C&G FARM
AUTOMATION
Carrol & George
Gesell
410-775-7300
410-848-3622

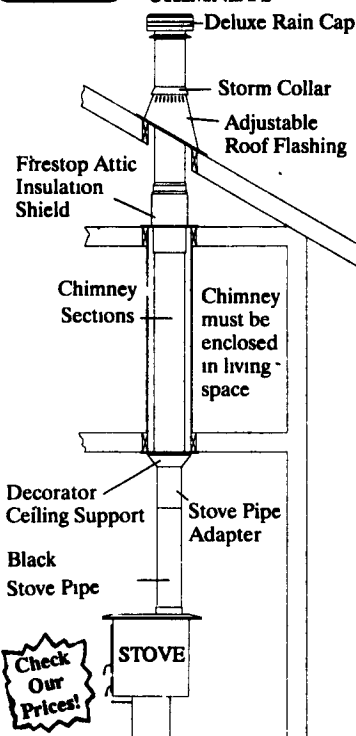
WHITEFORD, MD
ENFIELD EQUIP.
410-838-0480

POUND, WI
PATZ SALES,
INC.
414-897-2251

DISTRICT MANAGERS
Dennis Rohrbaugh
717-530-5410
Agn Bee Inc.
James Bilski, Pres.
814-696-9447



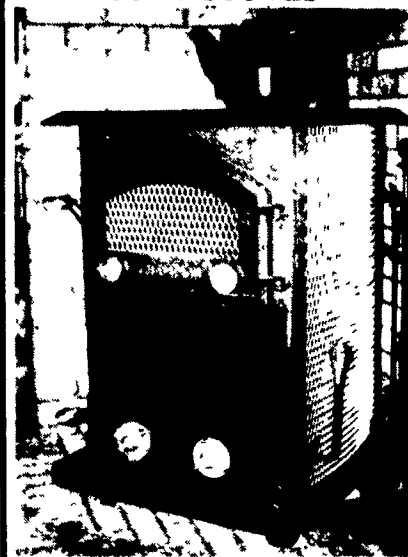
G.S.W. FULL LINE STAINLESS STEEL CHIMNEYS



Check Our Prices!

Mfg's Distributor
D.S. MACHINE SHOP
Dealer Inquiries Invited

CUSTOM BUILT COAL STOVES



- LARGE GLASS DOORS
- ENERGY EFFICIENT

IN STOCK — UPS Service —

D.S. MACHINE SHOP

238B Old Leacock Rd.,
Gordonville, PA 17529
717-768-3853