

Seipt In Hall Of Fame

(Continued from Page A1)
 in 1984 and increased production to 25,501m 896f 807p and a BAA of 105.1. They credit their increase in production to changes that include feeding grain four times per day, feeding steam flaked soybeans and keeping fresh forages in front of the cows at all times. They

have also worked at improving forage quality.

They have goals for the future that include a higher herd average, production costs at \$5.00/cwt, and increase dairy cattle sales by five percent.

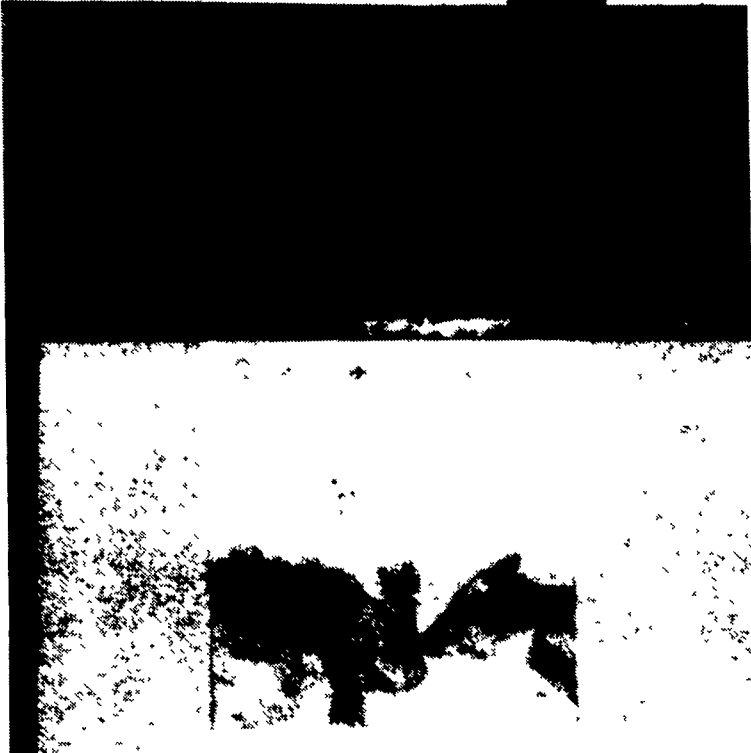
Lloyd and Denise are active in

(Turn to Page A38)

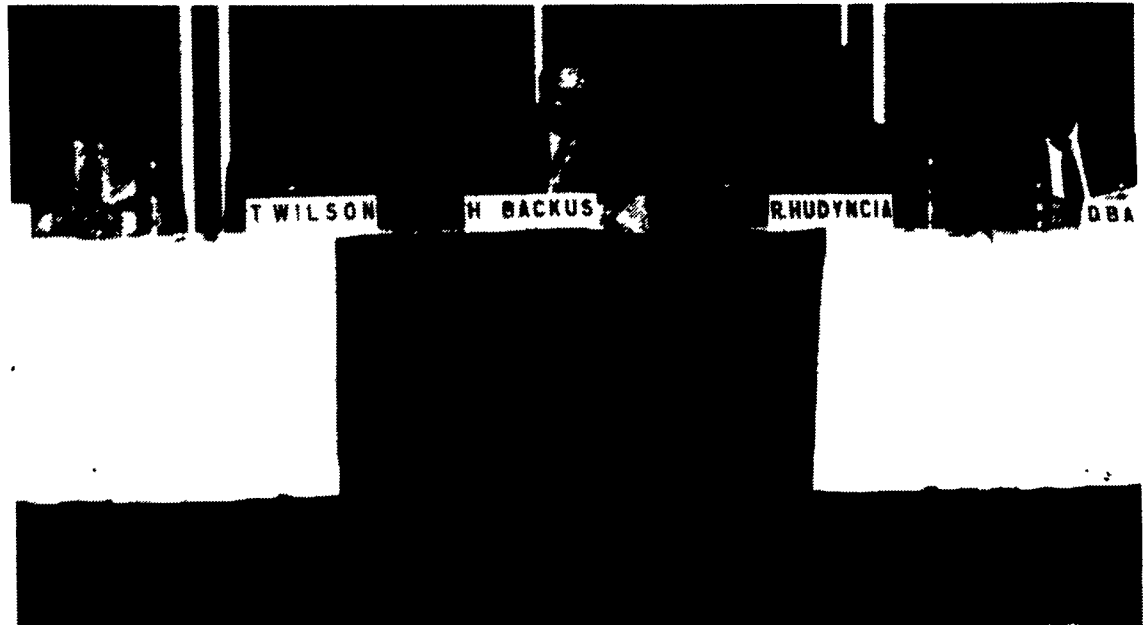
HOLSTEIN CONVENTION WILKES-BARRE, PA.



Six hundred Holstein breeders jammed the ballroom for the convention sale. At the time of the photo, the second helper to bring \$12,300 was being sold. The helper is Norz-Hill Leader Whissel.



Joyce Bupp, chairperson for the national convention booklet, and Bill Nichol, State Holstein executive director, talk about bids on space in the booklet for the 1995 convention in Pittsburgh.



Breeder panel, from left, Gordon Wood; Thomas Wilson; Horace Backus, moderator; Robin Hudyncia; and David Bachman.

Thrifty King™



Patented Design/
 Patent No. 4,739,727

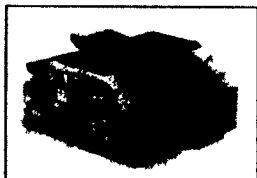
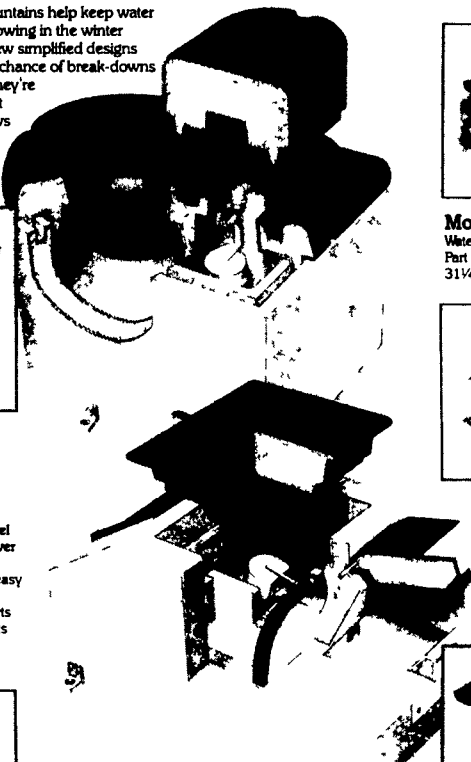


Electric-free fountains that live up to the Ritchie® name.

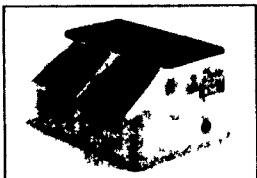
Our new Thrifty King™ fountains help keep water cool in the summer and free-flowing in the winter without using electricity. The new simplified designs and extra insulation mean less chance of break-downs and freeze ups. And because they're from Ritchie, they're built to last. Optional heat source allows all models to be installed on existing tile.



Model CT1
Cattle One-Drink
 Waters up to 50 head
 Part No. 16271
 28" x 20 1/4" x 19" high
 Also available in a four-drink model. See specification chart on back cover for details.
 • Elliptical closures "tip" making it easy for small livestock to drink
 • Floatation seal with no moving parts
 • Meets Grade A dairy requirements



Model HG4 Hog Four-Drink
 Waters up to 160 hogs
 Part No. 16260
 31 1/4" x 31 1/4" x 8" high



Model HG2-1
Hog Two-Drink, One-Side
 Waters up to 80 hogs
 Part No. 16298
 31 1/4" x 24 1/4" x 8" high



Model CT2 Cattle
Two-Drink
 Waters up to 100 head
 Part No. 16299
 42 3/4" x 24" x 19" high

Model HG2 Hog Two-Drink
 Waters up to 80 hogs
 Part No. 16298
 31 1/4" x 20" x 8" high

• Unitized one piece polyethylene plastic design prevents heat loss and damage and is easier to install.
 • Reinforced lifting lids and stainless steel bite guards

All Units

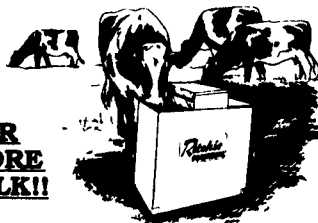
- Large service opening on top for easy access
- All stainless steel hardware
- 3-4 inches of foamed urethane insulation
- Reliable Ritchie float and valve.
- UV inhibitors prevent cracking and fading.



The third dimension equals the drinking height!

WATER THAT WON'T QUIT.

THE CHEAPEST THING TO GIVE YOUR COWS... WATER



FOR MORE MILK!!

Give your cows lots of water from Ritchie Energy free units

Water Is Cheaper Than Feed!

Recapping Your Ritchie® Fountains Makes Sense... And Saves Money!

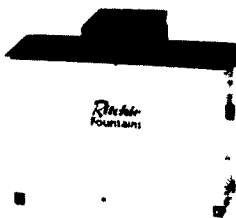
3 Cattle Fountain

Designed for big service in small pens. Waters up to 100 head. Part No. 11255. 17" x 28 1/4" x 26" high. Electric (536W, CSA approved) or Gas.



AC Multi-Purpose Fountain

Waters calves, sheep and goats. Perfect for box stalls, small lots or fencelines. Waters up to 40 cattle/100 calves. Part No. 12295. 10" x 24" x 18" high. Electric (286W, CSA approved).

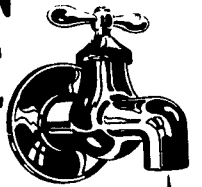


BE SURE YOU INSURE WITH US

OUR Farmowners Insurance

POLLUTION COVERAGE

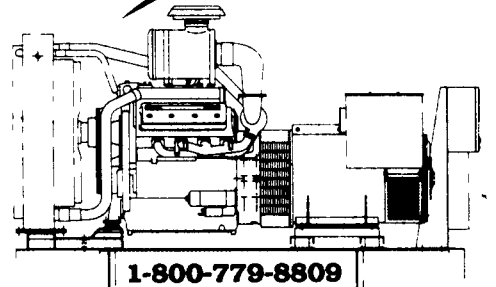
is not watered down



CALL US TODAY

Insuring the Pennsylvania Farmer since 1873

1-800-452-0867



1-800-779-8809

GENERATOR SYSTEMS
 5 to 2500 KW • PTO UNITS
 Sales-Service-Rentals-Installations-Maintenance Contracts

DISTRIBUTOR FOR:



PERKINS, MITSUBISHI, CUMMINS, DETROIT AND LISTER DIESEL POWERED

DYNA-TECH INDUSTRIES

602 E. Evergreen Road
 Lebanon, PA 17042-7925

717-274-8899 FAX 717-274-5334

RYDER SUPPLY CO.

539 Falling Spring Road
 P.O. Box 219
 Chambersburg, PA 17201-0219
 Phone 717-263-9111