



One of the Romanian families supported by the personalized "Adopt-A-Family" program. North Americans provide monthly food parcels for their adopted families. For just \$69 a month, sponsors can "adopt" a Romanian family. Names and addresses of these families are provided. More than 3,000 families in Romania have been adopted by individuals, families, churches, Sunday School classes, sewing circles, women's groups, and schools.

## Christian Aid Ministries Sets Up Example Farm In Romania

*And the King shall answer and say unto them, Verily I say unto you, Inasmuch as ye have done it unto one of the least of these my brethren, ye have done it unto me.*

--Matthew 25:40.

EVERETT NEWSWANGER  
Managing Editor

HINKLETOWN (Lancaster Co.)—The people involved with Christian Aid Ministries are modest. Plain people, they don't like to be photographed, and they don't brag about their accomplishments.

But the program to help families, children and farmers in Romania is not modest. Tons and tons of food, clothing, seeds, building materials and farm equipment have been donated, processed and shipped to those with needs. An orphanage has been built as an example of how to care for the many children that need help in this former Communist country. And now the Benueal Lapp family of Lapp Valley Farm, New Holland, has moved to Suceava to build a dairy barn and milk processing plant as a boost to the economy and

as a model farm to show the people there how to feed and care for a good herd of cows.

By April, 100 heifers are scheduled to be sent to the Lapps, 75 of them having already been donated for the project. Many local businesses have donated equipment and goods.

Work in the warehouse, located along Route 322, is done by a large number of volunteers. Various Christian schools send classes of children to help with the work in the warehouse as extracurricular activities for the children. Funds used for administration and fundraising is an amazingly low five percent.

One hundred twenty-three 40-foot sea containers of food, medical supplies, clothing and Christian literature were shipped in 1991 to Romania, Russia, Nicaragua, and Haiti. Volunteers spent more than 32,000 hours processing the shipments. A 50-bed orphanage was completed with materials donated by businesses and built by volunteer carpenters, plumbers and electricians who travelled to

Romania at their own expense.

Fifteen trucks owned by the association travelled 18,000 miles every four weeks in Romania to deliver 70 pound aid parcels to over 3,000 families. A new warehouse in Sucevana provides control of shipments and distribution of relief supplies.

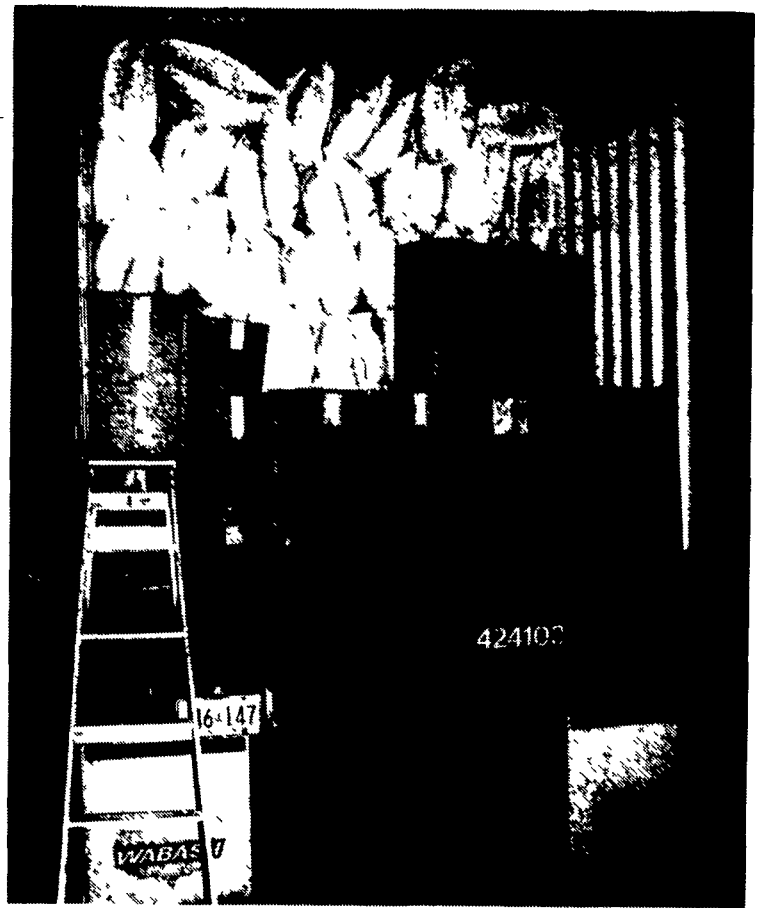
Right now if you have any good used equipment or cash donations earmarked for pipeline equipment to help complete the dairy barn, please call.

Or if you would like to know more about the project, contact David Laid, Christian Aid Ministries, 1353 Division Highway, Ephrata, PA. 17522. Phone: (717) 354-2434.

Another contact person is Amos Fisher, Fisher and Thompson, 15 Newport Road, Leola, PA 17540. Phone: (717) 656-3307.

*--For I was an hungred, and ye gave me meat: I was thirsty, and ye gave me drink: I was a stranger, and ye took me in: Naked, and ye clothed me: I was sick, and ye visited me: I was in prison, and ye came unto me.*

--Matthew 25:35-36.



A 40-foot sea container of clothing and shoes ready for shipment on a tractor-trailer truck to the ocean liner.

## Deadline Nears For Western Pa. Dairy Farmers To Vote

CLEVELAND, Ohio — Dairy farmers in eastern Pennsylvania have until Friday to vote on proposed amendments to the federal milk marketing order for the eastern Ohio-western Pennsylvania area.

Dairy farmers who may not have received a ballot through the mail and who feel that they are eligible to vote should call Marvin Baumer, USDA referendum agent with an office in Cleveland, Ohio, at (216) 826-3220.

According to a news release from Baumer, all dairy farmers who delivered milk to pool plants in that federal order during April 1992 are eligible to vote.

Further details of voting procedure include that a producer who is not a cooperative member is to vote by individual ballot.

Qualified cooperative associations of producers will be permitted to cast bloc votes on behalf of their members on all provisions of the amended order.

If the order, as proposed to be amended, is not approved by at least two-thirds of those casting ballots, the Eastern Ohio-Western Pennsylvania federal order will be terminated.

As proposed, the amendments include changes of milk classification to three uniform classifications for all federal orders; and to determining the price of reconstituted milk when it is made from nonfat dry milk or concentrated milk shipped in from an outside area.

The classification amendment is an effort to standardize the pricing for a more equitable marketing base. Currently, a few orders have two classes of use, while some have three, and even others differ in the definitions of what kind of uses apply to each class.

The reason for the reconstituted milk amendment is to make sure that the farmers who sold milk for the lower class use of manufacture

of nonfat dry milk or concentrated milk have an opportunity to receive some payback if a processor then hauls to milk to another order, reconstitutes the milk and markets it for a higher class use.

In Baumer's terms, "Concentrated milk (milk that has had some of the water removed) that is shipped in bulk form from a plant regulated under one order to a plant(s) regulated under another order will now be treated the same as any other shipment of a bulk fluid milk product between such plants.

"If such milk product is distributed as a labeled reconstituted fluid milk product by the receiving plant, the Class I use will be passed back to the originating order.

"Currently, if such milk is assigned to Class I uses, the receiving market imposes, on the handler that made the reconstituted milk, a compensatory payment for the benefit of local producers.

"Also, if a reconstituted product made from nonfat dairy milk that was manufactured from producer milk under another federal order is distributed as a labeled reconstituted fluid milk product, the handler may elect to make a payment to the market where the nonfat dry milk was made.

"Such an option does not currently exist," according to Baumer.

Notices of the referendum and ballots have been mailed to all known eligible voters, according to Baumer. No voting by proxy is permitted and each producer is entitled to one vote, regardless of the number of farms under control.

Partnerships, corporations, and other business organizations which operate dairy farms are entitled to only one vote, regardless of the number of partners, shareholders, or others which make up the organization.

The amended order was considered at public hearings held in September, October and November 1990, according to Baumer.



New dairy barn under construction in Suceava, Romania. The Benueal Lapp family from Lancaster County moved there to oversee the work and provide help to upgrade their local farm economy.

**MILK AMERICA'S HEALTH KICK**