

# Cows, Dairy Farmers, University Interdependent

(Continued from Page E4)

problems seem to plague universities, doesn't it make sound financial sense to rediscover these former mainstays of support by fostering grass-roots dairy groups?

Certainly the late Delaware U.S. Sen. Frear, who was also a member of the university's board of trustees, could attest to the success of such plans. He was also a well-known Delaware dairy farmer.

Frear would recognize that this

university's dairy herd, with an average milk production of above 20,000 pounds per cow per year, is among the leading dairy herds on any university campus. This herd is also a model for dairy farms within a 100-mile radius, an area which represents about 1 million cows, mostly in Pennsylvania or Maryland.

And finally, Frear could remind trustees and farmers that a dairy herd (especially a high-producing one), unlike any other agricultural enterprise, is a most efficient pro-

ducer of gross and net income on a regular monthly basis.

In these times of recession and

budget cuts, this economic advantage is worth noting. Let's think twice before doing away with

something that benefits so many, both inside and outside the university.

## 42 State Ag Projects

(Continued from Page E9)

- University of Pennsylvania**
- Evaluation of Disinfectants Against Salmonella Enteritidis, \$30,080.
  - Environmental Monitoring Protocols for the Detection of Salmonella in Poultry Houses, \$30,080.
  - Evaluation of Methods of Cleaning & Disinfection of Salmonella Contaminated Layer Houses, \$41,454.
  - Development of a Polymerase Chain Reaction Assay for Lyme Disease Spirochete in Farm Animals, \$36,283.
  - Salmonella in Domestic Animals, \$34,404.
  - Pharmacokinetics of Extra-

Label Drugs in Food Animals, \$64,776.

- Withdrawal Time for Extra Label Use of Gentamicin in Dairy Cattle, \$78,471.

**Delaware Valley College**

- Designs for On-Farm Pesticide Storage, Mixing and Loading Stations, \$7,200.

• Dayneutral Strawberry Production Practices for Pennsylvania, \$7,440.

• Spray Irrigation of Urban Wastewater, \$21,126.

• Measurement of Prelambing Udder Secretions, \$7,000.

**Rodale Research Institute**

- Interdisciplinary Multiple Crop Approach to IPM in Pennsylvania, \$43,119.



**MILK. IT DOES A BODY GOOD.™**  
MIDDLE ATLANTIC MILK MARKETING ASSOCIATION, INC

# GLENWOOD METAL FORMING

809 Glenwood Drive Ephrata PA 17522  
**717-733-9590**

## Roofing And Siding

- 29 Gauge Galvanize
- 29 Gauge Painted
- 26 Gauge Galvalume
- 26 Gauge Painted

New 409 Stainless Steel Roofing

All Panels Cut To Length - Coverage 36" Width

We Also Stock The Following Items:

- Pre-Hung Doors
- Ridge Vents
- Agri Build Windows
- Ridgolators
- Roll Door Track
- Trolleys and Hardware

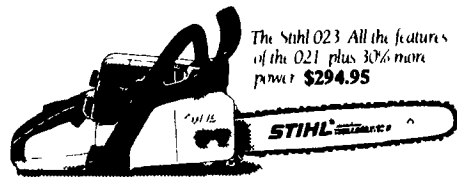
A new Product In Our Line  
**STANDING SEAM ROOFING**  
Manufactured at the job site

NOW YOU CAN CALL US TOLL-FREE AT  
**1-800-582-9956**

# Please Do Not Drool On This Page.



The Stihl 021 Superb power to weight ratio, electronic ignition with lifetime warranty **\$259.95**



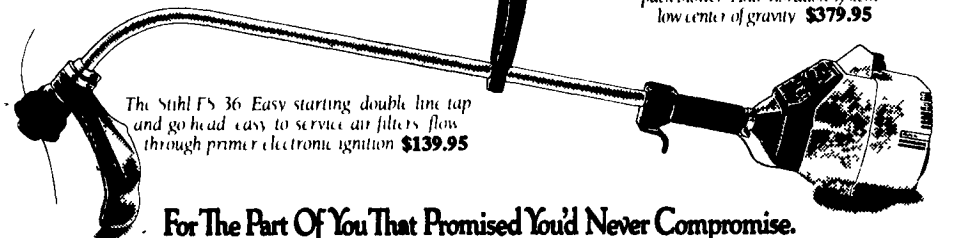
The Stihl 023 All the features of the 021 plus 30% more power **\$294.95**



The Stihl 025 More powerful than the 023 plus convenient side chain tensioner **\$319.95**



The Stihl 026 Designed for professional use on the demanding weekend woodcutter **\$429.95**



The Stihl FS 36 Easy starting double line tap and go head easy to service air filters flow through primer electronic ignition **\$139.95**

The Stihl BR 106 Powerful backpack blower Anti vibration system low center of gravity **\$379.95**

If your heart's desire isn't in this ad, you're not necessarily dead. But you're close.

We've got every man's fantasy here. Powerful, smooth-running machines that perform with precision and let you work with speed and efficiency.

But if, heaven forbid, you think a chain saw is a chain saw, or that all trimmers and blowers are alike, we suggest you visit one of the full-service Stihl dealers listed below.

Better yet, talk to any man who owns a Stihl. He'll give you a more enthusiastic sales pitch than any ad we could

ever write.

For The Part Of You That Promised You'd Never Compromise.

**STIHL®**

Available at these servicing dealers

**Bechtelsville**  
PASSMORE SERVICE CENTER, INC.  
RD 1, Rt. 100  
215-367-9084

**Dallastown**  
TRI-BORO CONCRETE, INC.  
435 Locust St.  
717-246-3095  
1-800-832-9018

**East Earl**  
GOODS LAWN & GARDEN CENTER  
Route 23  
717-354-4026 Ext. 34

**Elizabethtown**  
MESSICK FARM EQUIPMENT, INC.  
Rheema Exit Rt. 283  
Elizabethtown, PA  
717-367-1319, 717-653-8867

**Elm/Lebanon**  
BOMBERGER'S LAWN & GARDEN  
Elm: 717-664-4663  
Lebanon: 717-272-4155

**Ephrata**  
WES STAUFFER ENGINES & EQUIPMENT  
23 Pleasant Valley Rd.  
717-738-4215

**Ephrata, Hershey**  
HOLLINGER'S LAWN & GARDEN EQUIP.  
Ephrata, PA 717-738-1131  
717-856-2710  
Hershey, PA 717-533-4060

**Gap**  
GAP POWER EQUIPMENT  
Corner of Rt. 30 & Rt. 887  
717-442-8970

**Hamburg**  
SHARTLESVILLE FARM SERVICE  
RD 1, Box 1392  
215-488-1025

**Jonestown**  
BLUE MOUNTAIN ENTERPRISES, INC.  
Rt. 72 South  
717-865-2994

**Myerstown**  
EBLING LAWN & GARDEN SERVICE  
698 E. Lincoln Ave.  
717-866-6720

**Ono**  
SHUEY'S SALES & SERVICE  
Jonestown Rd.  
717-865-4915

**Oxford**  
OXFORD GREENLINE, INC.  
1100 Limestone Rd.  
215-932-2573

**Reading**  
NICARRY EQUIP. CO.  
RD 2 Box 2008  
215-926-2441

**Ronks**  
A & B SALES & SERVICE  
370 Newport Road  
2 Miles South of Rt. 23  
Along 772 Thru Monterey

**Somerset, PA**  
**McCooie, MD**  
LINCOLN SUPPLY & EQUIPMENT CO.  
Somerset, PA 814-443-1691  
McCooie, MD 301-786-6800

**Tamaqua**  
CHARLES S. SNYDER, INC.  
RD 3  
717-386-5945

**Whiteford MD**  
ENFIELD EQUIPMENT INC.  
720 Wheeler School Rd.  
301-879-5090

Distributed By  
Keystone Stihl