



# M.M. WEAVER & SONS, INC.

Leola, PA 17540

Phone: (717) 656-2321

Located 4 miles West of New Holland on Rt. 23. 1 1/2 miles Northeast of Leola on the No. Groffdale Rd. 1 mile on the right, opposite Groffdale Mennonite Church

## MASSEY FERGUSON EQUIPMENT

### A WINNING COMBINATION

Whether you're in the market for Lawn and Garden, Tractors, Implements, Conventional or Rotary Combines, Massey Ferguson has the winning combination.



**PRE-SEASON PRICES!**



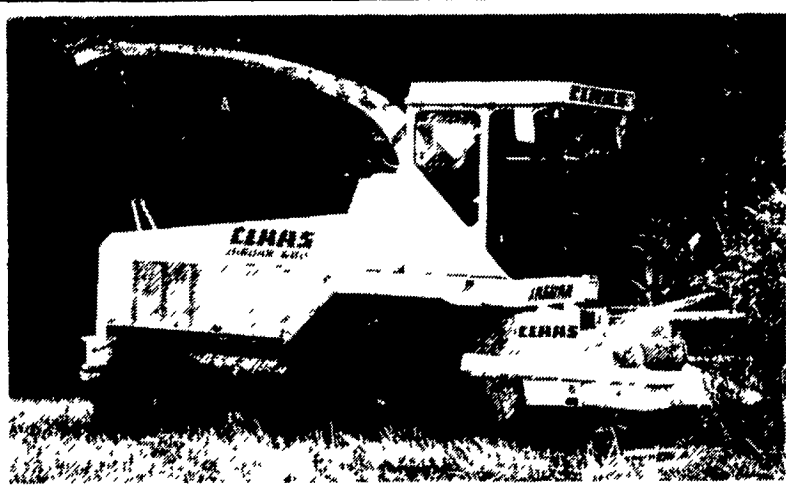
## MASSEY FERGUSON

WORLD'S BEST-SELLING TRACTOR BRAND

### THE CLAAS HARVESTER

#### RELIABILITY

The CLAAS Cutterbox is a unique balanced design using 2 knives in a V configuration. This forces the cutting action toward the center instead of the outside. This is the secret of their low horsepower requirement and good quality of cut.

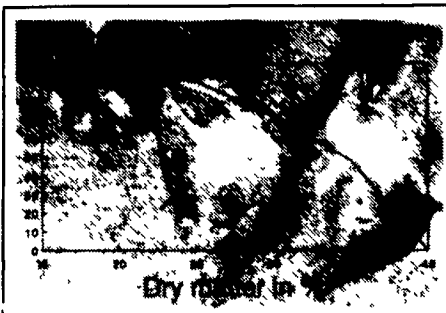
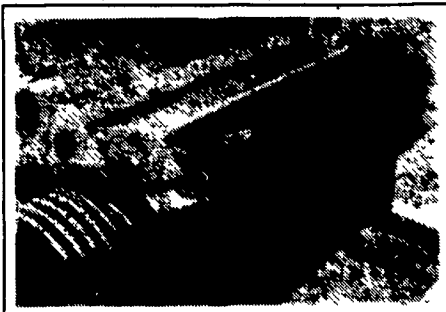
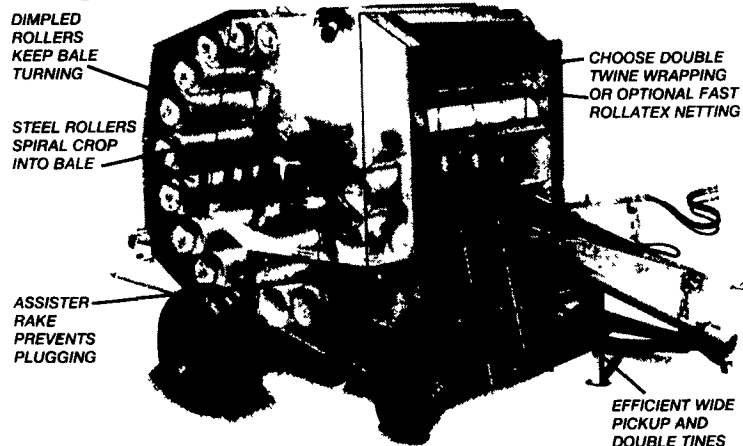


#### MAXIMUM FEED QUALITY

To ensure maximum feed quality from maize it is vital to crack every kernel. Digestion of uncracked maize falls as the maize becomes drier. Independent trials have shown the Claas corn cracker to be close to 100% effective. From the cylinder the corn passes through the two large diameter rollers with saw tooth profiles. The rollers run at different speeds to intensify the grinding effect and open up each kernel. It is a fairly tough process so the latest generation of corn crackers take account of the wear involved on the rollers. Nothing can reduce the wear but Claas have cut the cost of repair by making the outer sleeve replaceable. The shaft, drive pulley and bearings can all be reused which cuts down repair bills dramatically. Adjusting the distance between the two rollers is accomplished by turning two handles, easily accessible behind the cab. In no time at all the degree of cracking can be matched to the ripeness of the crop.

Owners say:

**"Tight bales, fast, no trouble"**



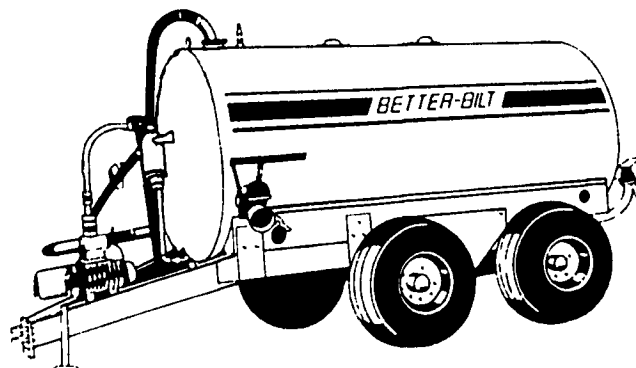
• We offer interest free financing until September 1993  
 • Ask us about our rental program  
 • Let us arrange a demonstration for you

Discover  
**CLAAS**  
 THE HARVESTING SPECIALIST

#### YOU WANT DEPENDABILITY

You want BETTER-BILT!

### VACCUUM SPREADER



PRESEASON PRICE ON (1) 2500 Gallon Vacuum Spreader In Stock

**\$9500**

ONE ONLY TOW-AWAY PRICE

#### BETTER-BILT

#### USED TRACTORS

|  |          |
|--|----------|
| MF 3660-4, 140 HP, 814 Hrs. . . . .                  | \$52,000 |
| MF 3650-4, 130 HP, <b>SOLD</b> . . . . .             | \$32,000 |
| MF 3650-4, 130 HP, 1839 Hrs. . . . .                 | \$30,000 |
| MF 3525-2, 110 HP, 2882 Hrs. . . . .                 | \$18,500 |
| MF 2745-2, 143 HP, 2583 Hrs. . . . .                 | \$12,000 |
| MF 374-4 With Loader, 57 HP, 735 Hrs. . . . .        | \$21,000 |
| MF 1085, 82 HP, 3568 Hrs. . . . .                    | \$8,500  |
| MF 1085, 82 HP, 3980 Hrs. . . . .                    | \$7,500  |
| MF 1080, 82 HP, 5516 Hrs. . . . .                    | \$5,000  |
| MF 285, 82 HP, 6160 Hrs. . . . .                     | \$8,000  |
| MF 285 Steel Wheels, 82 HP, 3013 Hrs. . . . .        | \$8,000  |
| MF 670 Cab, 80 HP, 2209 Hrs. . . . .                 | \$12,800 |
| MF 1020-4, 21 HP, 224 Hrs. . . . .                   | \$5,500  |
| MF 1030-2, 26 HP, 232 Hrs. . . . .                   | \$6,700  |
| MF 1030-4, 26 HP, 531 Hrs. . . . .                   | \$8,000  |
| MF 1035-2, 31 HP, 185 Hrs. . . . .                   | \$7,600  |
| MF 1045-2, 35 HP, 262 Hrs. . . . .                   | \$7,900  |
| MF 40 With Loader, 3170 Hrs. . . . .                 | \$4,700  |
| MF 30 With Loader, 668 Hrs. . . . .                  | \$19,500 |
| MF 444 Gas . . . . .                                 | \$2,000  |
| MF 22 Gas . . . . .                                  | \$600    |
| MF Loader Backhoe, 2956 Hrs. . . . .                 | \$8,500  |
| MF 35 With Loader. . . . .                           | \$4,500  |
| MF 65 D. . . . .                                     | \$2,500  |
| Ford 861, Select-O-Speed. . . . .                    | \$3,200  |
| Farmall 656, 6930 Hrs. . . . .                       | \$4,000  |
| Farmall 584 With Loader, <b>SOLD</b> 30 Hrs. . . . . | \$7,700  |
| IH 706 w/Cab. . . . .                                | \$5,500  |
| MF 135 Diesel, 3540 Hrs. . . . .                     | \$4,800  |
| IH 1466 w/Cab. . . . .                               | \$9,500  |

#### HAY EQUIPMENT

|  |           |
|--|-----------|
| Demo MF 228 Baler With Thrower. . . . .        | \$11,000  |
| Demo Claas 46 Steel Roll Round Baler. . . . .  | \$10,900  |
| Demo Vicon 1511E 5x6 Round Baler. . . . .      | \$9,900   |
| Used Vicon 1511E 5' <b>SOLD</b> Baler. . . . . | \$6,500   |
| Demo MF 5 Big Square Baler. . . . .            | \$36,000  |
| Used Vicon 1211 E 4x5 Round Baler. . . . .     | \$6,500   |
| Demo Vicon 321 Disc Mower Conditioner. . . . . | \$12,500  |
| Used Vicon 321 Disc Mower Conditioner. . . . . | \$9,900   |
| NH 489 Haybine. . . . .                        | \$3,900   |
| NH 451 Sickle Mower. . . . .                   | \$1,200   |
| Ford 3 Pt Sickle Mower. . . . .                | \$450     |
| Demo Vicon 216 7 Ft. Disc Mower. . . . .       | \$3,900   |
| Lucknow Tub Grinder. . . . .                   | \$5,900   |
| Teagle Bale Shredder. . . . .                  | \$1,900   |
| Vicon RS510 Tedder 17 Ft. . . . .              | \$3,900   |
| Vicon RS740 Tedder 24 Ft. . . . .              | \$4,500   |
| Pequea Hay Tedder. . . . .                     | \$1,330   |
| 6 Like New 8x24 Ft. Flat Wagons. . . . .       | @ \$1,200 |

#### PLOWS & TILLAGE

|   |         |
|---|---------|
| Glenco 7 Tooth Soil Saver . . . . .           | \$5,900 |
| MF 7 Tooth Coulter Chisel Plow . . . . .      | \$4,200 |
| M&W 5 Tooth Sub Soiler. . . . .               | \$5,700 |
| Vicon 18 Ft. Field Cultivator . . . . .       | \$6,900 |
| Brillion 5 Tooth Chisel <b>SOLD</b> . . . . . | \$950   |
| Ford 3-16 Auto Reset Plow . . . . .           | \$1,250 |
| IH 5-16 Spring Trip Semi Mtd. Plow. . . . .   | \$950   |
| Oliver 10 Ft. Transport Disc Harrow. . . . .  | \$1,100 |
| MF 2-16 Spring Trip 3 Pt. Plow. . . . .       | \$650   |
| Dunham 14 Ft. Cultipacker. . . . .            | \$1,875 |
| Yetter 3 Pt. Rotary Hoe. . . . .              | \$2,695 |
| Buffalo 6 Row Cultivator. . . . .             | \$7,900 |
| Pequea 6 Row Cultivator. . . . .              | \$2,100 |