

CALVES AT SIDE 8 HEAD - M&L-1
4-10 YRS OLD 800-1000 LBS
\$615.00-670.00 BABY CALVES
RETURNED TO FARMS 11 HEAD -
\$50.00-95.00 MOSTLY \$50.00-55.00
100 LBS & OVER \$135.00-137.50
Smithfield, Va.

Thursday, February 18, 1993
PRICES BASED ON IN WEIGHTS:
SLAUGHTER HOGS 109 HEAD SOWS
US 1-3, 300-500 LB. 30 50 - 37.00 US 1-3,
500 LBS. & OVER 37.00 - 40.00 BOARS
300-600 LB. 29.00 - 32.25.

SLAUGHTER CATTLE 22 HEAD
SLAUGHTER COWS 17 HEAD COWS
CUTTER & BONING UT. 1-3 48 50 -
53.00 BREAKING UT. & COMM. 2-4
43.50 - 54.00 CANNER AND LOW CUT-
TER 1-2 35.50 - 39.00 SLAUGHTER
BULLS 5 HEAD BULLS Y.G. 1-2,
1300-1600 LB. 58.00 - 60.00 Y.G. 1-2,
1600 LBS. & OVER 58.00 - 60.50.

GOATS 23 HEAD MATURE BILLY
GOATS 46.00 - 67.00 NANNIES 34.00 -
36.00.

FEEDER CATTLE 231 HEAD
STEERS 77 HEAD STEERS MED&LGE
1 SMALL 1 MED & LARGE 2 300-400 -
84.00- 85.00 90.00 400-500 87.00- 93.00

78.00- 81.00 81.00 500-600 83.00- 86.00
73.00- 83.00 83.00- 89.50 600-700 78.00 -
70.50- 79.50 700-800 74.00- 79.00 - 78.00
800-900 75.00.

HEIFERS 118 HEAD HEIFERS
MED&LGE 1 SMALL 1 MED & LARGE
2 200-300 - 73.00- 77.00 - 300-400 82.00-
84.00 65.00- 79.00 - 400-500 76.00- 83.00
72.50- 80.00 69.00- 74.00 500-600 - 68.00-
74.00 74.00- 78.50 600-700 69.00- 72.50
64.50 66.00- 70.00 700-800 63.00- 64.00.

BULLS 36 HEAD BULLS MEDIUM 1
SMALL 1 MED & LARGE 2 200-300
97.00 - - 300-400 90.00- 91.00 73.00-
88.50 - 400-500 90.00 84.00 76.00
500-600 82.00- 87.00 73.00- 76.00 77.00-
80.00 600-700 - - 63.00- 76.00

Central U.S.

Carlot
Beef Report
Feb. 17, 1993
Report supplied by USDA
CENTRAL U.S. CARLOT BEEF
REPORT (INCLUDES THE MAJOR
PRODUCTION AREAS IN THE MID-
WEST AND TEXAS) AS OF 3:00 P.M.

COMPARED TO TUESDAY'S 3 P.M.
REPORT: UTILITY CARCASSES
2.00-3.00 HIGHER; CUTTER MOSTLY
4.00 HIGHER. DEMAND MODERATE
FOR LIGHT OFFERINGS.

COW AND BULL CARCASSES
FOB OMAHA BASIS
8 LOADS REPORTED
UT, BRK 2-4, 450 & UP, 2 LOADS,
RANGE 84.00-85.00, LATEST ESTB.
MKT. 84.00-85.00.

UT, BNG 1-3, 400 & UP, 3 LOADS,
RANGE 88.00-89.00, LATEST ESTB.
MKT. 88.00-89.00.

CUTTER 1-2 350 & UP, 3 LOADS,
RANGE 96.00-100.00, LATEST ESTB.
MKT. 100.00.

YGI, LATEST ESTB. MKT. 101.00 A.
BONELESS PROCESSING BEEF/
BEEF TRIMMINGS

124 LOADS REPORTED
FRESH 90% BONELESS BEEF
3.50-5.00 HIGHER; 75% FIRM.
DEMAND LIGHT TO MODERATE FOR
LIGHT OFFERINGS. BEEF TRIM-
MINGS STEADY TO FIRM ON LIGHT
TO MODERATE DEMAND AND
OFFERINGS.

90% FR, 18 LOADS, RANGE
136.5-140.0, WT. AVG. 138.53.

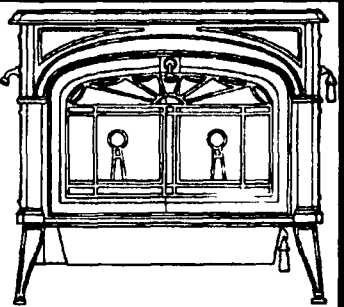
90% FZ, UNQUOTED.
85% FR, UNQUOTED.
85% FZ, UNQUOTED.
75% FR, 3 LOADS, RANGE 103.0, WT.
AVG. 103.00.
75% FZ, UNQUOTED.
65% FR, RANGE 82.00-84.00, WT.
AVG. 83.20 A.
65% FZ, UNQUOTED.
50% FR, 75 LOADS, RANGE
59.50-60.00, WT. AVG. 59.99.
50% FZ, UNQUOTED.
50% BX, UNQUOTED.
BULL 92-94, RANGE 143.0, WT.
AVG. 143.00 A.
FOB EAST TX AND OK
90% FR, 16 LOADS, RANGE
138.5-140.5, WT. AVG. 140.00.
90% FZ, UNQUOTED.
85% FR, UNQUOTED.
85% FZ, UNQUOTED.
75% FR, 2 LOADS, RANGE 103.5, WT.
AVG. 103.50.
75% FZ, UNQUOTED.
65% FR, 3 LOADS, RANGE 83.00, WT.
AVG. 83.00.
65% FZ, UNQUOTED.
BULL 92-94 UNQUOTED.
CAF NORTHEAST AREAS
90% FR, 7 LOADS, RANGE
139.0-141.0, WT. AVG. 140.43.
90% FZ, UNQUOTED.
85% FRESH, UNQUOTED.
85% FZ, 75% FR, 75% FZ, 65% FR

AND 65% FZ, UNQUOTED.
**ABCDE AFTER QUOTES REPRESENTS
DAYS SINCE LAST ACTUAL
MARKET TEST. QUOTES ARE
DROPPED AFTER 5 DAYS OF NO TEST
OR BEFORE IF THEY NO LONGER
REFLECT CURRENT MARKET
CONDITIONS.**

New Holland Horses

New Holland Sales Stables
New Holland, PA
Monday, Feb. 15, 1993
Report Supplied By Auction
300 HEAD. MARKET STEADY.
DRIVING HORSES 610.00-975.00.
RIDING HORSES 605.00-810.00.
BETTER RIDING HORSES
865.00-950.00.
REGISTERED 860.00-1125.00.
KILLERS LIGHTWEIGHT
550.00-660.00; HEAVYWEIGHT
775.00-900.00, FEW 950.00-1100.00,
THIN 160.00-415.00.
WORK HORSES 810.00-1115.00.
HORSE COLTS 290.00-410.00.
PONY MARES 120.00-300.00.
PONY COLTS 45.00-105.00.
GELDINGS 120.00-300.00.
LARGER PONIES 360.00-475.00.

Stop in and see our
NEW Vermont Castings
GAS STOVE
in operation!



Available in black,
sand, red & blue



906 E. Main St., (Rt. 322) Ephrata
1 Block East of Rt. 222
(717) 733-4973
1-800-642-0310
M-T-W 10-6,
Th. & F 10-8;
Sat. 10-4



Replace Your Bulbs - Save Electricity
FLUORESCENT LIGHTS



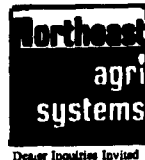
PRICES AS
LOW AS
~~\$6.99~~
NOW
\$5.95

- Save Energy Replaces up to 75 watt incandescent
- Easy Installation
- Economical Lasts 10 times longer than standard bulb
- Fewer Lamp Changes
- Lower Maintenance Cost
- Durable Polycarbonate Housing
- 45 000+ Hour Ballast
- 10 000+ Hour Lamp Life
- Air Cooled
- Water Resistant Ballast
- 120 Volt
- Ratcheted Brass Socket
- Medium Base
- Starting Temperatures 0
- Made in USA

MODEL	WATTS	INCANDESCENT EQUIVALENT	INITIAL LUMENS
3000	5	25 WATTS	250
3200	7	40 WATTS	400
3500	9	60 WATTS	600
3700	13	75 WATTS	900
3900	22	90 WATTS	1300

Call Toll Free 1-800-673-2580

SOLD AND SERVICED BY:



Northeast Agri Systems, Inc.
FLYWAY BUSINESS PARK
139 A West Airport Rd.
Lititz, PA 17543
(717) 569-2702



GENERATORS

Sales ★ Service ★ Rentals
★ Complete Generator Systems
★ PTO ★ Portables ★ 2-1600 KW
"We Service It If You Have It
And Sell It If You Need It"

34 W. Mohler Church Rd.
Ephrata, PA 17522

Tel: 717-738-0300
Fax: 717-738-4329

**For Yield...
W-L alfalfa
stacks up.**

FOURTH
YEAR

WL Competitors

W-L Alfalfa varieties are strong producers throughout the life of your stand. You can't afford to settle for less.

If your alfalfa doesn't make it to the fourth year, you've reduced the overall profitability of your crop.

In test after test by public and private researchers, W-L alfalfa yields stack-up for profits. For more than 25 years, W-L alfalfa varieties have been bred for long stand persistence, quick recovery after cutting, multiple pest resistance and extra leafy, fine-stemmed forage. With proper crop management, you'll have strong fourth-year yields that stack up for a profitable crop.



WL 322HQ

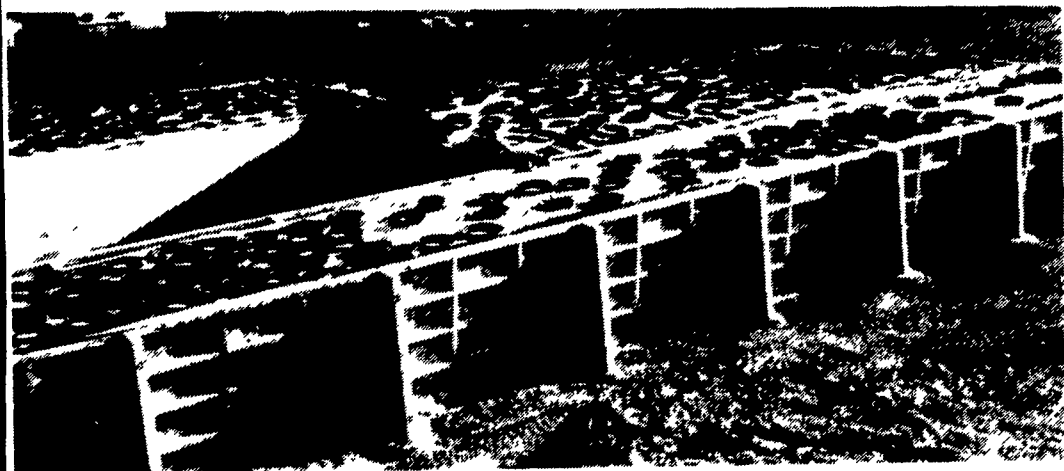
More than seed...
Solutions



**FARMERS
SUPPLY**

515 N. Franklin St.
Lancaster, PA
(717) 394-7127

Bunker Silos



Precast Concrete Bunker Silos Available In Center Divider
T-Walls And Our New Outside T-Wall Panels That Can Be
Bolted Together Or A-Frame Panels.

Other Products:

- H & J Bunks
- Hog & Cattle Slats
- Bunker Silos
- Concrete Hog Penning
- Concrete Post & Beams

Give us a call for more information on hog, beef, dairy and heifer barns.



477 East Farmersville Rd.
New Holland, PA 17557
(717) 355-2361

