

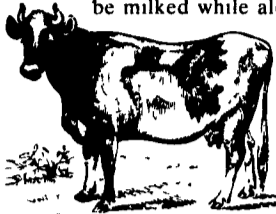


FEBRUARY 15-21, 1993

WINTER'S BACK BREAKS NOW.

**SPLIT MILK?**

In 1930 there were 21.9 million cows in the United States. Collectively they produced 116.6 billion pounds of milk. One of those cows, a Guernsey from Missouri, contributed part of that milk under rather unusual circumstances. On February 18, 1930, the brave cow boarded a plane at the St. Louis International Air Exposition. With a corps of reporters in attendance, Elm Farm Ollie made aviation history as she became not only the first cow to fly but also the first cow to be milked while aloft. The milk was sealed into paper containers and parachuted over St. Louis — proving that while it may be true that pigs don't fly — cows, apparently, do!



*Milk the cow that standeth still.*

**TIP OF THE WEEK**

Use a cloth wrung out in milk to clean and whiten piano keys.

**EARTHWISE**

Pet bunnies, gerbils, and their various cousins, as well as chickens and ducks, would love a treat of salad greens in the winter. Check with the produce manager of your local store. Grocers always try to "clean up" the produce to make it more attractive to shoppers. He's probably discarding large boxes of nutritious but funny-looking lettuce leaves and vegetable trimmings every week and would be glad to have you cart some away. It's basic recycling and pet pampering at the same time.

**INDIAN PUDDING**

- 1/2 cup molasses
- 3 tablespoons cornmeal
- 3/4 cups milk, scalded
- 1 egg, beaten
- 1/2 cup sugar
- 1/2 teaspoon salt
- 1/2 teaspoon ginger
- 1/2 teaspoon cinnamon
- 2 tablespoons butter
- 1/2 cup cold milk

Stir molasses and cornmeal into hot milk and cook gently, stirring, until thick. Remove from heat. Combine egg, sugar, salt, and spices; add to cornmeal. Pour into greased 1-quart casserole. Bake at 325° F for 30 minutes. Add butter and cold milk, do not stir. Continue baking for 1 hour. Makes 4 servings.

**The OLD FARMER'S WEATHER FORECAST**



**NORTHEAST:** Clear and mild, heavy rain south, sleet and snow west, then heavy snowstorm.

**SOUTHEAST:** Cloudy, showers, very heavy rain deep south, seasonable and sunny, cold, light frost northern Florida.

**MIDWEST:** Snowstorm, cold, heavy snow north then seasonable and clearing.

**NORTHWEST:** Colder, freezing rain, with snow mountains, then clearing and warming, heavy rain coast.

**SOUTHWEST:** Rainy and cold, some snow mountains; then clearing and warming.

**Four States Livestock**

Hagerstown, Md. Feb. 10, 1993

Report supplied by Auction

SLAUGHTER COWS: 100 HEAD, STEADY PRICES. UTILITY 48.00-51.50; HIGH DRESSING 52.00-54.75; CANNERS 43.00-47.50; SHELLY 43.00 DOWN.

BULLS: YG#1 1200-1900 LBS. 61.00-62.50; YG#2 54.00-59.50.

FED STEERS: CHOICE 1100-1400 LBS. 75.00-77.00; OVER 1400 LBS. 68.00-76.00; LOW CHOICE 1000-1350 LBS. 71.00-75.00; STANDARD HOLSTEINS 57.00-62.00.

FED HEIFERS: HIGH CHOICE 1100-1350 LBS. 74.50-78.75; LOW CHOICE 68.00-72.00; 850-1050 LBS. 65.00-72.50.

VEAL CALVES: LOW CHOICE 200-300 LBS. 85.00-91.00; GOOD 75.00-85.00; CULLS, PRICES HIGHER. 85-110 LBS. 50.00-61.00, FEW TO 68.00; 50-80 LBS. TO 58.00; WEAK/ROUGH 48.00 DOWN.

FARM CALVES: HOLSTEIN BULLS #1 95-120 LBS. 165.00-190.00; 90 LBS. TO 160.00; #2 100.00-145.00; HOLSTEIN HEIFERS #1 95-120 LBS. 150.00-184.00; 75-90 LBS. 90.00-150.00; BEEF X BULLS TO 125.00.

BUTCHER HOGS: 2.00 HIGHER. US#1&2 230-260 LBS. 44.00; 215-260 LBS. #1&3 42.00-43.50; 190-210 LBS. 38.00-43.00; SEVERAL 300-450 LBS. 35.00-41.00.

SOWS: 300-500 LBS. 33.00-35.00; FEW #1&2 37.00-41.50. BOARS: 400-600 LBS. 29.00-30.25; 220-260 LBS. 31.00-33.25.

STOCK CATTLE: 115 HEAD. STEERS 200-400 LBS. FEW TO 91.00; 400-500 LBS. 75.00-94.00; 500-600 LBS. 74.00-82.00; 600-800 LBS. 68.00-80.00; HOLSTEINS 900-1050 LBS. 54.00-59.00. HEIFERS: 300-500 LBS. 72.00-85.00; 500-700 LBS. 64.00-77.00; 700-900 LBS. 63.00-73.00.

BULLS: 200-400 LBS. 74.00-86.00; 400-600 LBS. 70.00-79.00; 600-800 LBS. 62.00-72.00; 800-900 LBS. 54.00-68.00.

DAIRY REPLACEMENTS: LARGE SPRINGERS 900.00-1200.00; MEDIUM 700.00-900.00; SMALL FRESH TO 600.00; HOLSTEIN HEIFERS 500-700 LBS. TO 71.00.

LAMBS: HIGH CHOICE 80-100 LBS. 77.00.

SHEEP: 20.00-34.00. GOATS: LARGE NANNIES TO 63.00; MEDIUM 45.00-55.00.

PIGS AND SHOATS: NONE OFFERED.

TO SELL NEXT WED. 17TH. DAIRY CONSIGNMENT SALE. PROMISED: 2 PUREBRED HOLSTEIN BULLS 900-1000 LBS. Sired by LEADMAN AND RAMBO DAMS HAVE RECORDS TO 20,000 LBS.

WASHINGTON CO. 4-H & FFA HOG SHOW WILL BE TUES., FEB. 16, 7 P.M. HOGS WILL BE SOLD WED., FEB. 17, AROUND 8:30 P.M.

THE FIRST SPRING FEEDER CATTLE SALE WILL BE WED., FEB. 24. DEMAND IS STRONG ALREADY!

**BINKLEY & HURST BROS. INC.**  
133 Rothsville Station Rd. • Lutz, PA 17543  
Phone 717-626-4705

Machinery Sales  
M-F 7 to 5 Sat. 7 to 11:30

**NOTICE**  
WINTER-TIME PARTS  
DEPT. HOURS:  
Mon.-Fri. 7 AM to 5 PM  
Sat. 7 AM to 12 Noon  
After Hours Emergencies  
Call (717) 626-8888,  
(717) 626-5159, (717) 859-8768  
Sun. Closed - Lord's Day

WE SHIP PARTS DAILY

\* FEDERAL EXPRESS \*

\* TRUCK FRT. \*

\* AIR FRT \*

\* B&H DELIVERY SERVICE \*

HIGH PRESSURE WASHERS:

Mi-T-M

**HAVE YOUR CORN PLANTER READY FOR SPRING!**  
Now Testing  
• KINZE • JOHN DEERE  
• CASE IH • NEW IDEA  
Computerized Testing Means **We Repair**  
More For Your Money!

FINGER PICKUP	ROW UNIT SEED COUNT SENSORS	PLANTER MONITORS
---------------	-----------------------------	------------------

Drop Them Off Or Ship Them Into Us

**case ih**  
**case ih**  
**David Brown**  
**GEHL**  
**Egger Beaver**  
**TRAILERS**

**KINZE**  
CORN PLANTERS & GRAIN CARTS

**WOODS**  
DISC HARROWS, COULTER, CHISEL, CHISEL PLOWS

**SUNFLOWER**  
**by Athens**

**BUSH HOG**  
ROTARY CUTTERS, Bat Wing Model & Others

**ATHENS**  
DISC HARROWS, COULTER, CHISEL, CHISEL PLOWS

**"BETTER-BILT"**

**FUSKY**

**Redline**  
TRAILER REPAIR PARTS

**Busy As A Bee?**  
No Matter Where You Are - You're Never Too Far!  
**Your Parts Are Just A Phone Call Away!**

Purina Mills

**ARE YOU A PORK PRODUCER WHO:**

- Achieves A 3.14 or Less Feed Conversion
- Produces 18 Pigs/Sows/Yr
- Lean Cuts of 56% or Greater
- Wants To Receive Profits Above A Base Contract Payment.

THEN: Our Hog Contracts are Tailor Made For You

For More Information Call  
**1-800-873-5300**

Purina Mills, Inc.

Leaner pork for leaner people.

ADC Meets Farmers' Needs

More Than \$124 Million in Extra Payments

"At Atlantic Dairy Cooperative, our mission is to maximize returns to members. In the past five years, we returned more than \$124 million to members in equity payments, over-order premiums and quality bonuses. That's an average of \$35,500 per member. And these extra dollars are continuing at the rate of \$1.5 million a month.

"When non-members ask me why they should belong to Atlantic Dairy Cooperative, I am happy to report that we are financially healthy, strong in membership and growing in sales. ADC is the region's largest and most fiscally-sound cooperative, with a guaranteed market and outstanding benefits.

"More dairy farmers joined us last year than at any time in the past decade. If you are not an ADC shipper and are worried about your own milk market, then you should talk to the cooperative that is facing the future with confidence."

**Robert B. McSparran**  
President

1225 Industrial Highway, Southampton, PA 18966  
1-800-645-MILK

75 Years of Service to Dairy Farmers