

Ida's Notebook

Ida Risser

Each year at this time in February, I get a large envelope of old Valentines out of a drawer and display them. These delicate greetings are at least three-quarters of a century old.

They are stand-up ones that show lots of roses, forget-me-nots and white doves. There are three or four scenes — one in front of the other. The largest is a 12-inch antique automobile decked with flowers. The children in them wear smocked dresses and the boys knee-length pants.

This year instead of spending all their time on the six tables in our livingroom, I'll use some of them as decorations on a table at a Valentine dinner dance. I've been asked to decorate a table with a large cake and other appropriate items for the occasion.

Even the cake has me concerned as I usually do not ice the many cakes that I bake. You see, I tell myself that frosting would just be that much more sugar that I do not need. When our three daughters were home and baked most

Dairy Promotion Offers Student Internship

HARRISBURG (Dauphin Co.) — Students interested in pursuing careers in public relations and marketing should apply for the Pennsylvania Dairy Promotion Program's summer internship. The successful candidate will be involved in Pennsylvania Dairy's summer promotion campaigns for June Dairy Month and July Ice Cream Month. The "Communications Intern" will gain valuable

writing and communications experience during the internship period.

"Pennsylvania Dairy recognizes that students need to gain actual experiences in the job market," said Betsy Dupuis, Pennsylvania Dairy Communications Director. "Our internship will give a student hands-on experience in marketing activities, from actual event preparation to media interviews and press tours."

Dairy Promotion Program will gain many valuable experiences and materials, from brochures to media interviews. I encourage anyone interested in dairy promotion to pursue this opportunity," adds Dupuis.

The internship with Pennsylvania Dairy will be for 12 weeks during the summer, beginning in mid-May and ending in late July, 1993. The successful candidate will be working out of the Pennsylvania Dairy Office, located in Harrisburg.

Interested students should apply for the Pennsylvania Dairy internship by February 26. Applicants should send a cover letter, resume, and writing samples, to Betsy Dupuis, Communications Director, the Pennsylvania Dairy Promotion Program, 2301 North Cameron Street, Harrisburg, PA 17110.

Further information about the internship is available by calling Dupuis at (717) 787-6903.

every day to keep their three brothers satisfied, they did ice their cakes. In fact, the cakes were often decorated with delicate roses and scrolls. I never learned to use the tools for decorating as they did such a good job by themselves.

For a period of time the youngest girl sold some of her productions as word got around about her ability. Another daughter made lots of dinner rolls and sticky buns for our family. And, now that she has a family of her own, she bakes all of their bread.

Maybe I had better practice baking a cake for us and decorating it before I try to make one as a centerpiece for a Valentine dinner.

The internship is geared toward students pursuing studies in communications and marketing. An emphasis will be placed upon previous writing and speaking experience. Students with an agricultural background will get special credit for their knowledge of the state's large dairy industry. Students must be in their fifth semester of study to qualify for the internship position.

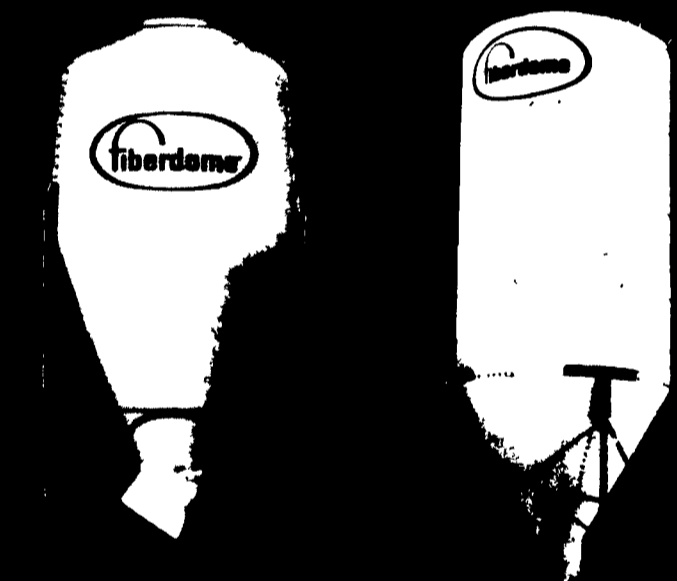
"Our former interns can attest to the quality of this internship program. A communications intern with the Pennsylvania



Why settle for 2nd best when Fiberdome now manufactures the most advanced fiberglass bulk bin available!

- Eliminates bridging, won't rust or corrode
- Cuts heat buildup and condensation
- Feed stays fresh in any weather

- Precision engineered for long, long life
- Unique 5-year warranty
- Adaptable to any auger or feeding system



Write for a full color brochure and a free sample of fiberglass. The modern material used for high-performing bins.



P.O. Box 11 • Lake Mills, WI 53551
(414) 648-8378

...made to last

Contact your nearest dealer.

SOLLENBERGER SILO Chambersburg, PA 717-264-9588	McMILLEN BROTHERS Loydsdale, PA 717-789-3961	J&M MACHINERY Greensburg, PA 412-668-2276
ROVENDALE AG & BARN SUPPLY Watson, PA 717-538-9564	GNEGY SURGE SERVICE Washington, PA 412-222-0444	BENCE'S FARM EQUIPMENT Bedford, PA 814-623-8601
NISSLEY FEEDING EQUIPMENT Willow St., PA 717-786-3129	BRENNER DAIRY EQUIPMENT Spartanburg, PA 814-654-7309	WIGGERS FARM EQUIPMENT Corry, PA 814-664-2661
DETWILER SILO Newville, PA 717-776-6321	TOM DUNLAP Jersey Shore, PA 717-398-1391	BADGER SALES & SERVICE Spring Mills, PA 814-422-8279
FICKES SILO CO. Newville, PA 717-776-3129	MENDENHALL DAIRY SUPPLY Brookville, PA 814-849-5539	GEER FARM EQUIPMENT Brookville, PA 814-849-5904
SOMMERSET BARN EQUIPMENT Somerset, PA 814-445-5555	CEDAR CREST EQUIP. Lanahan, PA 717-270-6600	JAMES L. GOOD SALES & SERVICE Clarkburg, PA 412-459-8052
HOOVER EQUIPMENT Tyrone, PA 814-684-1777	LANCASTER SILO Lancaster, PA 717-299-3721	
BIG VALLEY FEED & GRAIN Bellville, PA 717-935-2163		

The Chain Saws For People Who Want To Act Like Lumberjacks, Not Work Like Them.

If you know a little about the timber business, you know that Stihl chain saws have been used by professional woodcutters for over sixty years.

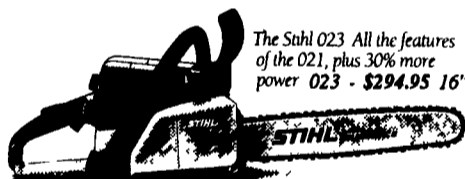
So maybe you think Stihl equipment is "too good" for a suburbanite or farmer or anyone else who needs to cut wood on an occasional basis.

Well, we're happy to tell you that Stihl makes a whole series of chain saws with your needs in mind.

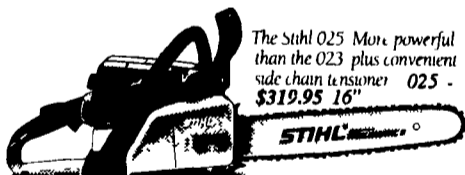
But don't confuse



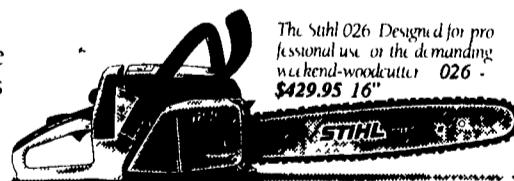
The Stihl 021 Superb power to weight ratio, isolated carburetor electronic ignition 021 - \$259.95 14"



The Stihl 023 All the features of the 021, plus 30% more power 023 - \$294.95 16"



The Stihl 025 More powerful than the 023 plus convenient side chain tensioner 025 - \$319.95 16"



The Stihl 026 Designed for professional use on the demanding weekend-woodcutter 026 - \$429.95 16"

them with discount-store chain saws.

All Stihl saws are designed for performance, ease of handling and starting, and durability.

Now, about the 026 shown at the bottom we'll admit we sell this saw to professional woodcutters. But it's also bought by people who simply put a lot of hours on a saw every year.

And by the way, when were you ever unhappy because you bought a product that was too good?

For The Part Of You That Promised You'd Never Compromise.



Number One Worldwide

Available at these servicing dealers

Bechtelsville PASSMORE SERVICE CENTER, INC. RD 1, Rt. 100 215-367-9084	Ephrata WES STAUFFER ENGINES & EQUIPMENT 23 Pleasant Valley Rd. 717-738-4215	Jonestown BLUE MOUNTAIN ENTERPRISES, INC. Rt. 72 South 717-865-2994	Ronks A & B SALES & SERVICE 370 Newport Road 2 Miles South of Rt. 23 Along 772 Thru Monterey
Dallastown TRI-BORO CONCRETE, INC. 435 Locust St. 717-246-3095 1-800-632-9018	Ephrata, Hershey HOLLINGER'S LAWN & GARDEN EQUIP. Ephrata, PA 717-738-1131 717-656-2710 Hershey, PA 717-533-4060	Myerstown EBLING LAWN & GARDEN SERVICE 688 E. Lincoln Ave. 717-866-6720	Somerset, PA McCoolle, MD LINCOLN SUPPLY & EQUIPMENT CO. Somerset, PA 814-443-1691 McCoolle, MD 301-786-6800
East Earl GOODS LAWN & GARDEN CENTER Route 23 717-354-4026 Ext. 34	Gap GAP POWER EQUIPMENT Corner of Rt. 30 & Rt. 697 717-442-8970	Ono SHUEY'S SALES & SERVICE Jonestown Rd. 717-865-4915	Tamaqua CHARLES S. SNYDER, INC. RD 3 717-386-5945
Elizabethtown MESSICK FARM EQUIPMENT, INC. Rheems Exit-Rt. 283 Elizabethtown, PA 717-367-1319, 717-653-8867	Hamburg SHARTLESVILLE FARM SERVICE RD 1, Box 1392 215-488-1025	Oxford OXFORD GREENLINE, INC. 1100 Limestone Rd. 215-932-2573	Whiteford MD ENFIELD EQUIPMENT INC. 720 Wheeler School Rd. 301-879-5090
Elm/Lebanon BOMBERGER'S LAWN & GARDEN Elm: 717-664-4663 Lebanon: 717-272-4155		Reading NICARRY EQUIP. CO. RD 2 Box 2008 215-926-2441	Distributed By Keystone Stihl