



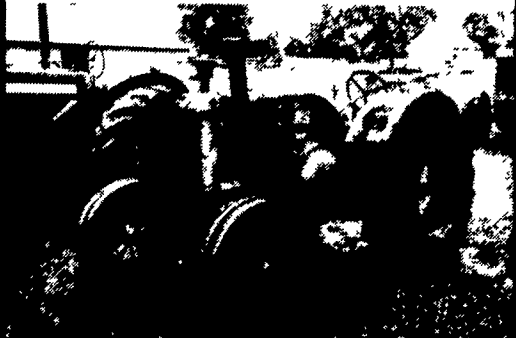
**'83 STEIGER BEARCAT III**

ST 225, 4WD, 8-4-38 Tires, A/C, Heater, Radio, 3306 Cat. Motor, 2800 Hrs., Very Good Condition

**\$27,500**

North'd Co.  
**(717) 758-6221 After 6:00 PM**

**COLLECTOR TRACTORS FOR SALE**



1938 JD D, Unstyled, Running Condition, Fenders, Front Spokes, PTO, Drawbar, Good Tin, Last Year Of The Unstyled.  
**\$2,900**

- JD B - Cyclone - Running - 1950? ...\$1,100
- JD A - Styled - Good Tin - 1947.....\$1,250
- JD B - Cyclone - Good Tin - 1950?.....\$1,450
- JD 620 - Runs - To Restore - 1957 ..\$1,950
- Oliver 66 w/Wide Front - 1953.....\$2,000
- Oliver OC46 Crawler Loader - As Is \$2,500
- JD G- Single Front- Runs - 1952 .....\$2,500
- JD A - WF - 3 Pt. - Fenders - 1950.\$2,600
- JD Styled D - Runs Good - 1941.....\$2,900
- JD G- Runs Good - 1947 .....\$2,900
- JD Unstyled D - Runs Good - 1938..\$2,900
- JD R - Not Running - Good Tin - 1954.....\$2,900
- JD 420 Dozer - As Received - 1959 .....\$2,900
- JD B Unstyled - 1938 - Nice.....\$3,400
- MM G705LP- Cab- 1650 Hours.....\$3,450
- JD 720 Diesel Standard - 1957 .....\$3,500
- JD 440 Crawler Loader (GM Diesel) - 1959?.....\$3,500
- JD Unstyled A - Extra Nice - 1937...\$3,900
- JD Unstyled B - Nicely Redone - 1936 .....\$3,900
- JD Unstyled D - Nicely Redone - 1936 .....\$3,900
- JD G Unstyled - 1938 - Runs Good.....\$4,500
- JD 720- DE - 1958 - WF .....\$4,700
- JD 730- Standard - 1959.....\$4,700
- JD 60 High Crop- Poor - 1954? .....\$4,800
- JD 530- 3 Pt.- Nicely Redone - 1960\$4,900
- JD 730- LP- WF- 3 Pt.- Fenders - 1960 .....\$4,900
- JD 80 - 1956 - High S/N.....\$5,200
- JD G- WF- 3 Pt. - 1952 - Extra Nice\$5,400
- JD A High Crop- Poor - 1950?.....\$5,500
- JD 320 Utility - 1 Owner - 1957.....\$5,900
- JD 80 Diesel - Runs Good - 1955.....\$5,900
- JD 820 - Runs Good - 1957.....\$5,900
- JD 620 Standard- Nicely Redone - 1957 .....\$5,900
- JD 830 - 1959 - Pony.....\$5,900
- JD 830 - Direct Ele. - 1959 .....\$5,900
- JD 320S- Very Nice Original - 1957 .....\$5,900
- JD 330S - Runs Good - 1959 .....\$8,500
- JD 720 High Crop - 1957.....\$12,500
- JD 730 High Crop- Very Nice - 1958 .....\$13,500
- Ferguson 35 "New" - Under 1 Hour - 1956 .....\$24,500
- JD R.....Coming In
- JD D Unstyled.....Coming In

*I Am Rebuilding My Collection, Will Buy Clean Or Odd John Deere's. Buy-Sell-Trade. Lots Of Older Sales Literature, Toys And Pedal Tractors For Sale.*

**LLOYD WENGER**  
251 S. Race St.  
Myerstown, Pa. 17067  
717-866-2130 Days  
717-866-7147 Evenings

- IH Hydro 84, 2700 hours, showroom condition .....\$10,500
- IH 1066, new rubber, excellent condition .....\$10,500
- IH 1066 black stripe, 3900 hours, showroom condition.....\$11,500
- IH 1086, 81 model, cab & air, new TA clutch & rubber.....\$16,900
- Year round cab, excellent condition .....\$1,200
- IH 1468, V8, cab, super sharp.\$11,500
- IH Hydro 186, cab & air .....\$12,900
- IH 686, 1800 hours, new rubber, excellent condition .....\$10,500
- IH 806 dsl.....\$2,500
- IH 966, recent overhaul, new TA, clutch & paint.....\$10,500
- IH 1466 .....\$7,900
- Ford 8N w/loader & blade, new rubber .....\$2,500
- IH 766, new rubber, excellent condition .....\$9,500
- IH 2 post w/roof .....\$750
- IH 1466, factory cab & air, new TA, clutch & rubber .....\$11,500
- IH 1066, new engine, new TA & clutch, new rubber & paint\$12,500
- IH 244 4WD, 600 hours .....\$7,500
- 2 cabs to fit IH 706 to 1466 tractors .....\$300 & \$500

Financing Available  
**717-776-5291**  
**JEFF SHOWAKER**  
Exit 11, Rt. 81  
Clean off-the-farm, field tested tractors  
Most Reconditioned And  
Sold With Warranty

**USED EQUIPMENT**

**Special Of The Month**  
JD 5200 40 HP MFWD  
Call For Details

**TRACTORS**

- JD 3155 MFWD w/Cab, 300 Hours .....Coming In
- JD 4030 Reconditioned. ....\$10,900
- JD 2840 w/Ldr. ....\$12,900

**DIESEL COMPACTS**

- Ford 1720 MFWD, 56 Hrs, w/Ldr. And Backhoe .....\$17,700
- Ford 1510 .....\$ 6,600

**COMBINES**

- White 8900 Hydro w/4WD, With Heads...Coming In
- JD 7700 w/Grain Head .....\$ 8,900
- JD 215 Flex Head .....\$ 5,500
- JD 653A Row Crop Head.....\$ 7,900
- JD 444 Com Head.....\$ 4,400
- JD 443 Com Head.....\$ 4,500
- JD 244 Head.....\$ 2,800
- IH 715 w/Grain Head.....\$ 9,000
- JD 915 Rigid.....\$ 6,600
- JD 918 Rigid.....\$ 7,700

**PLANTERS - DRILLS**

- JD 30' Folding Drill w/520 Carrier .....Coming In
- JD 8200 18x7 Drill .....Coming In

**TILLAGE**

- Brillion 3 Pt. 10' Chisel Plow.....\$ 1,400
- IH 55 Folding 16' Chisel Plow... ..\$ 2,200
- JD 845A 3-16 2 Way Plow.....\$ 2,900
- IH 315 12' Roller Harrow.....\$ 2,900
- JD 610 25' Chisel Plow .....\$11,500
- JD 2500 6/18 Spring Reset Plow .....\$ 3,500
- JD BWF 18' Disc.....\$ 2,200

**HAY & HARVESTING**

- JD 530 Round Baler.....\$12,500
- JD 1219 Mo/Co.....\$ 3,900
- JD 1209 Mo/Co.....\$ 2,900
- Grimm Super 8' Tedder.....\$ 1,295
- NH 717 w/Heads.....\$ 1,400

**MANURE HANDLING**

- NI 165 Bu. Manure Spreader Single Beater.....Coming In

**NEW EQUIPMENT**

- New Tractors In Stock:
- JD 3055 2 Wheel w/Cab
- 3255 MFWD w/Cab
- JD 6400 MFWD w/Cab

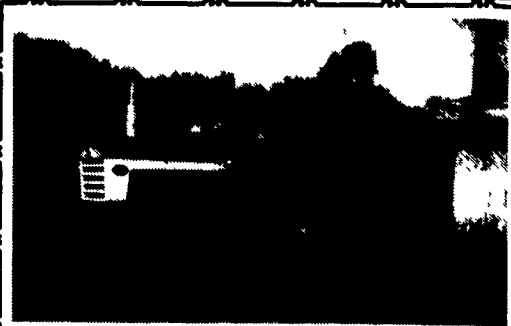
**TOBIAS EQUIPMENT CO., INC.**  
Hallfax, PA 17032  
Phone: 717-362-3132

**WANTED:**

1880 or 1890 NH Forage Harvester, Hydro and Diesel, CAH  
Lanc. Co.  
**717-464-3162**

**SURGE**

**CROWD GATE**  
NI 355 550 bu., 15 ton manure spreader, very good condition  
**609-265-1695**



**Farmall 560 Diesel**  
Overhauled Engine, Less Than 100 Hours, 16.9x38 Tires - 80% \$3,500  
**717-549-2485**



**JD 300B TLB \$7,800**



**JD 555 Rebuilt Trans., New Pins & Bushings \$15,000**



**Case 450, \$6,800**



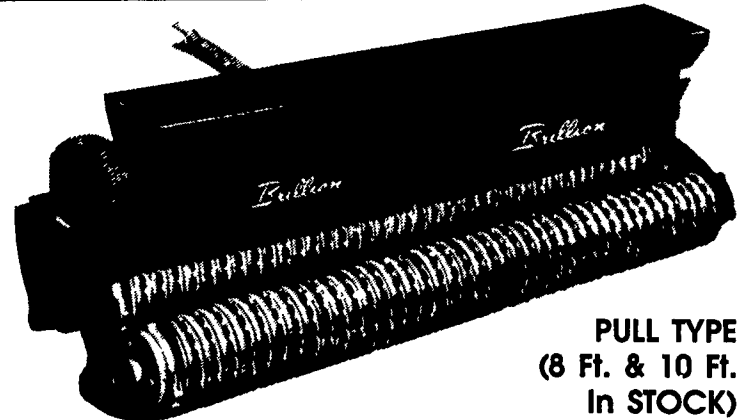
**1990 Case 1840, Low Hours \$10,500/Choice of 2**

- Case 1150B, Crawler Loader, new pins & bushings..\$13,000
- Cat D8H, Serial #46A17096\$24,000
- Ford 3500 TLB.....\$5,500
- JD 310 TLB.....\$7,700
- Case 1835B skid loader .....\$7,500
- JD 410 Loader Backhoe....\$10,000
- JD 300 TLB, rebuilt motor..\$6,800
- JD 300 Wheel Loader w/3 pt., PTO .....\$6,500
- JD 350 Crawler Loader .....\$8,000
- JD 450 Dozer w/Mechanical 6 Way Blade .....\$5,500
- JD 555 Crawler Loader, rebuilt motor, pins & bushings\$15,500
- Komatsu D65S Crawler Loader.....\$10,500

**PARTING OUT: IH TD340 CRAWLER LOADER**  
IH TD9 Crawler Loader w/6 Cylinder Motor w/Turbo

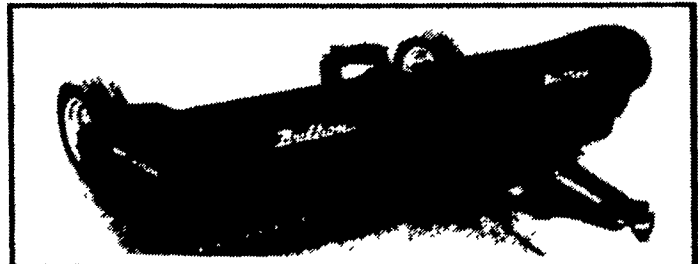
**J & F Equipment**  
**(717) 859-3283**  
No Reasonable Offer Refused  
Customs Repairs On All Makes Industrial & Farm Equipment

**SURE-STAND SEEDERS**



**PULL TYPE (8 Ft. & 10 Ft. In STOCK)**

**Brillion FLAIL SHREDDERS**



**12 Ft. Cutting Width In Stock!**

**COMING OPEN HOUSE - Details To Follow**

**GRUMELLI, INC.**  
Farm And Industrial Equipment  
Quarryville, Pa. 717-786-7318  
See Tony Grumelli Clarence Herr  
Salesmen: Don Fichtner

