

1975 F-100 Club Cab Ford Truck, cab real nice, new box, \$1500. 717/362-4462, 717/362-8580.

FOR SALE: 16' UTILITY TRAILER, (new) 7,000 GVW, elect. brakes, 15" tires, loading ramps, \$1,615 Martin Hardware, Schaefferstown, Lebanon Co., Pa. 717-949-6817

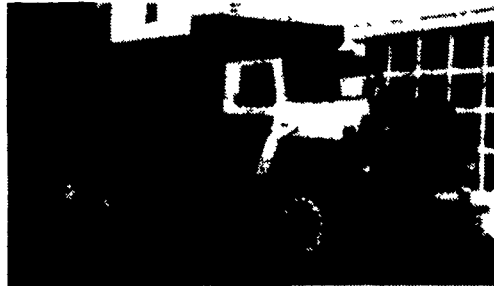
FOR SALE: STOCK TRAILER 6'x16' steel gooseneck (new) \$3,250. Martin Hardware, Schaefferstown, Lebanon Co., Pa. 717-949-6817

Ford dump truck, single axle, air brakes, V8, 8 speed, 46,000 GVW, running condition, good tires, \$500. 410-529-1333.

New International equipment trailer, 12,000 GVW, 8'x18' bed, 2-5/16 ball hitch, \$2,600. (215)869-2001.

V653 Detroit, \$2500 717-862-3433.

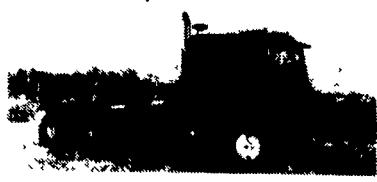
WANTED: 6-71 Detroit and lo-hole transmission. Prefer complete takout, near Centre County. Would like to hear run first 814-355-1853.



**'79 International S-1900**  
MV-446 Gas, 5+4 Sp., Recent Engine, Trans, Clutch, 15 1/2' Body, Grain Door, 400+ Bu., Clean  
**(908) 782-2936**



**1984 FORD 900**  
290 Cummins 15-speed Hend. ex-leaf suspension 11:22 rubber on truck & trailer, 26" Trailco with 66" sides.  
**717-866-2738**



1974 Freightliner T8664T, Cummins 350 HP, 15 Speed, 4 Spring Susp., 11R22.5 Tires. 180" W.B. Unit #TC086243  
**\$4,900**



1977 Kenworth K100, Cummins 400, Jake Brake, 13 Speed, 4.33 Rears, 11R24.5 Tires, 4 Spring Susp., 166" WB, Wet Line, Unit #TC248935  
**\$6,900**



1985 IH 9370, Cat 350, 15 Speed, DS451 Rears, 3.70 Ratio, Hendrickson RTE 440 Susp., 11R 22.5 Tires, 170" WB, Double Framed, 2 Available Units #PCA15896 & PCA16054  
**\$18,900**



1988 Mack R688ST, 350 Mack, Dynatard, T2090 Trans., Mack Rears 4.64 Ratio, Camelback Susp., 11R24.5 Tires, 210" W.B Unit #TC021921  
**\$28,900**



1986 Summit Alum. Dump Trailer, 34' Frame, 32' Body, 24.5 Tires, Single Acting Tailgate Hinged To Roadside Unit #UC006157  
**\$10,500**



1986 Freightliner FLT8664T, 350 Cat, 9 Speed, Reyco Suspension, PS, AC, Unit #TD267212  
**\$7,400**

**PARTS & SERVICE 7 DAYS, 24 HRS.**

**- WE NEVER CLOSE -**

**(717) 766-8000**

**MOTOR TRUCK EQUIPMENT CO.**

198 Kost Rd., P.O. Box 1922, Carlisle, PA 17013

**"FREE CATALOG" CALL OR WRITE**

**DIRECTIONS TO OUR MIDDLETOWN STORE-** On your road map, we are on Route 230 mid way between Middletown & Elizabethtown. Take the Toll House Rd. exit off Rt. 283, turn and go to stop at Rt. 230, go east on 230 1-1/2 ml. on the right.



DEPARTMENT L F  
4294 EAST HARRISBURG PIKE  
MIDDLETOWN, PA 17057

HOURS: Mon - Fri. 9-6  
Saturday 9-2  
Sunday - Closed

**(717) 944-0318**



4x8, 5x10, 6x12 UTILITY TRAILERS STARTING AT \$499



ALL TRAILERS BUILT "IN OUR SHOP"



CAR HAULER AS LOW AS \$1,474

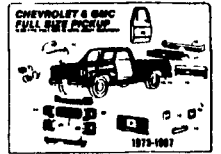
STANDARD FEATURES - 18" DIAMOND STEEL DECK, BOX TUBE FRAME, JACKS, CHAINS, ALL WHEEL ELEC. BRAKES & MORE. USE YOUR OWN WHEELS/TIRES & SAVE \$225 OFF OUR LOW PRICE OF \$1,699. WOOD DECK AVAIL.



**"TRAILER PARTS"**  
ANGLE & CHANNEL IRON, BOX TUBING, LIGHTS AXLES, COUPLERS, WIRING, CHAINS & TIEDOWNS, Etc., Etc.

**CLASS III HITCH RECEIVER**  
10,000 Lb. MGTWR. In Stock For Most Domestic & Import Pickup Trucks & Vans FOR MOST POPULAR FORD CHEV & DODGE PICKUPS and FORD EXPLORER KIT  
**\$79.95** OTHER APPLICATIONS UP TO \$99.95

**AUTOBODY PARTS, PAINTS & SUPPLIES**



- 73-79 CHEVY, FORD, TK FENDERS \$39.95-\$49.95
- BODY FILLER-CASE OF 4-GAL \$33.95
- ACRYLIC ENAMEL PAINT AS LOW AS \$28.95
- URETHANE HARDENER DOES A GAL. \$12.95
- SANDPAPER-6" DA SELF ADHESIVE, 100 PER ROLL LOW AS \$18.50. ALSO DRY BACK DA, WET & DRY SHEETS, LONG FILE!

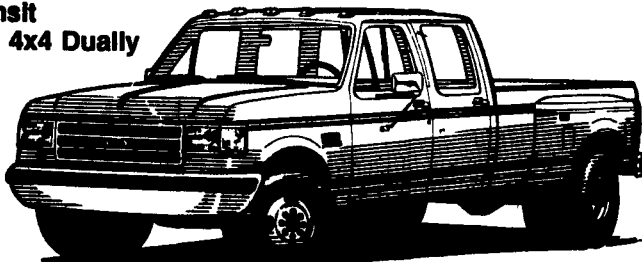
100% OF OTHER ITEMS AT BIG SAVINGS!!

Mark VII - Pickups - Broncos - Bronco II - Stake Body - Crew Cab

**'93 FORD CREW CABS**

As Low As **\$19,994**

**In Stock**  
(2) '93 Diesel, Stlck  
(1) '93 In Transit  
(1) '93 Diesel, 4x4 Dually  
(5) '93 Centurions Diesel, Stlck



**'93 FORD F-150**  
#1152, 6 Cyl., 5 Spd, PS, PB, AM-FM St., Rear Step Bumper  
DELIVERED PRICE.

**\$10,995\***



**'93 FORD F-250 SUPER CAB 4x4**  
Diesel, Stlck, PW, PL, More!  
2 In Stock!



From **\$24,390**

**'92 & '93 CONVERSION VANS**  
8 To Choose From!

Starting As Low As **\$19,995!**

V8, AC, Automatic, PS, PB, TV, Loaded, HI-Tops & Low Tops

Prices include applicable rebates plus \$500 cash or trade. Tax, tags and doc fees additional. Payments at 10.9% APR for 60 Months



**'88 GMC SUBURBAN 4x4**  
350, V8, Rear Air, Rear Seat, Very Clean, 68,000 Mi. #1334A  
SALE **\$11,525**



**'92 FORD EXPLORER EDDIE BAUER**  
4 Dr., Leather, Loaded, #P1484  
New Was \$26,000  
NOW **\$19,922**



**'84 FORD F-140 4x4**  
V8, 351, AT, AC, 46,000 Mi., One Owner, #P1493  
NOW **\$7,900**



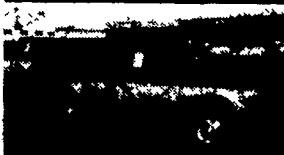
**'89 FORD ECONOLINE CLUB WAGON**  
8 Pass., 302, AT, AC, 60,000 Mi., #1227A  
NOW **\$8,900**



**'91 FORD F-150 SUPERCAB 4x4**  
28,000 Mi., Loaded, Must See, #P1451  
**\$17,999**



**'90 FORD F350 CREW CAB**  
5.8L, Loaded, 65,000 Mi., #1155A  
Was \$12,988  
NOW **\$12,150**



**'92 CHEVY S-10 BLAZER**  
4 Dr., Tahoe, 9900 Miles, Gorgeous! (File Photo) #P1432  
SALE **\$19,935**



**'88 CHEVY 3500 EXT. CAB**  
46,000 Mi., 464, V8, #1192A  
NOW **\$10,399**



**'87 PLYMOUTH VOYAGER**  
V6, AT, 65,000 Mi., Super Clean #P1988A (file photo)  
SALE **\$5,995**

Unless This Emblem Is On Your Car Or Truck You Probably Paid Too Much

**SHEEHY** LEBANON

**SHEEHY FORD LINCOLN MERCURY INC.**

20th & Cumberland St., Lebanon

9-9 Daily  
9-5 Sat.  
717-272-7671



Parts Dept. Open  
Daily 8-5  
Sat. 8-12  
717-273-8168

Tempo - Cougar - Continental - Town Car - 4x4 - Box Van - Rangers

Custom Vans

XLT

Grand Marquis

Marquis

Lynx

Topaz

Diesel Pickups

Mustang

T Bird