

1973 2070 Int. truck tractor, excellent condition. (908)439-2430.

1973 White tri-axle dump trailer, 34' steel frame; 30' aluminum box w/SS floor liner; 24.5 spoke wheels. 717-529-2196.

1974 DM Mack 10 Wheel Liquid Manure Truck \$7900. 717-272-9595.

1975 Mack U Model tandem axle trailer, 237 engine, 5 speed Mack trans, connected to 1971 Trailmobile trailer, 40' tandem axle w/ center mounted H model Prentice loader, pulp wood grapple and pony motor, fair condition, tractor & trailer together \$6500 OBO. 215/626-2555.

1979 Chevy pickup, 3/4 ton, 350, 4 speed, 67,000 original miles, very good condition, \$2500 negotiable 215-445-6107.

1979 Ford 7000 truck, 23,000 GVW, hydraulic brakes, 3208 CAT engine, good condition, \$3800. 717-776-7725.

1979 Ford LN8000 feed truck w/new 3208 CAT diesel, 9 to 10 ton capacity, 4 bin, sprout, Waldim aluminum body. 215-267-4921 Ext 205.

1979 International, 466DT motor w/21' Eby aluminum body. 201/694-3156.

1980 Chevy 4x4 3/4 ton truck w/9' steel flatbed, 67,000 miles, setup for towing 5th-wheel trailer. 717/548-3116.

1980 Ford F-7000 Cat engine, w/23' van, liftgate, 25,999 GVW, H&D. Vacuum boost brakes, 5 speed. Asking \$6,500. (814)367-5537.

1981 F350 Ford, 12' stake dump, runs good. Call 8:00-5:00. 717-292-5696 \$3995.

1981 Ford 800, 429 gas, 32,000 GVW, 5+2, air brakes, PS; 1979 Ford 800, 429 gas, 32,000 GVW, 5+2, PS, air brakes. 301-877-9889.

1983 Ford LN8000, CAT 3208, CA-86, m/steel, speedy spread fertilizer/lime spreader 12F23R. 804-633-7034.

1984 Chevy 4x4, PU, 8600 GVW, 350, 400 turbo trans, \$5,700 OBO. Lebanon. (717)865-5022.

1984 Ford F-350 12' Stakebody Truck \$3500 OBO. 1-800-377-3029.

1985 Chevy, C30, 350, 4 speed, 12' flat bed, 4.56 ratio, 10,500 GVW, 99,000 miles, good condition \$3750; Vacuum manure tank, truck mount, 3850 gallon, 16" dome to dome, 3/4" thick steel, never used, \$5000. Union County. Call 717-922-4385.

1985 Chevy C20 6.2 diesel 8600 GVW, auto, PS, PB. 717/274-1413.

1985 Chevy S10, 4 cyl. automatic, long bed, low miles, excellent condition, \$3000. 717-438-3205.

1986 Dodge Cargo Van, Heavy Duty, 70,000 Miles, Excellent Condition, \$2900. 717-865-2022.

1989 GMC, 4x4, extended cab, sierra classic, S-15 truck, 4.3 engine, one owner, AC, automatic, delayed wipers, AmFm cassette, new tires, bedliner, excellent condition, 51,000 miles, red interior red gray, \$9,900. (717)966-9500 (717)922-1315.

'85 Chevy Sport Van, 12 passenger, 350 auto., PB, PS, AM-FM cassette, mechanically good, needs paint, \$2,900. 717-733-2873

'86 Chevy Scottsdale 20 Series Suburban, 5 passenger, 350 auto, PB, PS, air, AM-FM, 55,000 miles, brown & tan, 1 owner, excellent condition, \$8,600. 717-733-2873

86 Ford Red LTL9000 400 Cat, 370 rears, new overhaul w/papers, 13-speed, 42" bunk, \$21,000. 215/598-7773.

'79 GMC 4WD Pick-Up, 400 Automatic, Tilt Wheel, Cruise, 4" Lift. 215-536-8674 After 6PM.

84 Timpet, blue, New Way air ride, spread, NWD 30 Thermoking, 96" wide 48' long, \$14,995; 87 American, stainless steel, Thunderbird carrier unit, 1124 tires, 96" wide 48' long, \$15,995; 88 Int Eagle, 425 Cat engine, 13 speed, red, 150,000 miles on overhaul, 42" bunk, \$30,995. 215/598-7773.

'67 Ford F950, 15 speed, gas, 22' steel dump, \$5,000. (301)694-8624.

'69 Diamond Rio tractor w/22' aluminum dump trailer, very good condition, \$8,000. (215)791-0248.

'69 Int. 1700, 5+2, 18' dump, good condition, \$4,500. (301)694-8624.

'74 Chevy custom 30 truck, 10,000 GVW with or without cattle racks, 9'x7'4" bed, runs good, \$1000. Call 717-665-3168.

238 Detroit diesel, good condition, \$1,800. 6V92T Detroit, take out, runs, \$1,250. 6V92TA 335hp overhauled, \$3,500. 6V53 Detroit, good used, \$2,250. (717)733-3890.

40' Flatbed trailer, tandem axle, ideal for farm use, \$1500 OBO. Chuck 717/569-0406.

'86 Dodge stake body truck, runs, needs minor work, \$400. (410)560-1239.

'91 Ford F150 XLT Lariat pickup, 300 EFI, 5 spd., PS, PB, air, AM-FM, dual tanks, 31,000 miles, charcoal w/balance of factory warranty, excellent condition, \$9,950 717-733-2873

9' Eby cattle body, side door, ramp and roll door back, very good condition, \$2500 firm. 215-445-9241

'89 6x12 gooseneck stock trailer, good condition, \$2250 OBO. Mifflin Co 717-899-6481.

'89 GMC 3500 dual whl w/9' Stahl utility body, 350 FI, 4 spd., PS, PB, AM-FM, dual tanks, 10,000 GVW, 26,000 miles, dark blue, \$11,900. 717-733-2873

'87 Chevy crew cab, dually, 65,000 miles, excellent condition, MD inspected (410)634-2821

'87 Ford F250 4x4, 300 EFI, 4 spd., lock-out hubs, PS, PB, AM-FM, dual tanks, 6,600 GVW, 1 owner, red, \$7,900 717-733-2873

(800) 533-3837

YOUR DIRECT LINE TO GENUINE GM PARTS

When you call the number listed above you'll reach our wholesale parts specialists, who can help you keep your GM repair work moving quickly. Ask About:

- Specializing in GM Medium Duty Trucks, Current and Obsolete.
- \$500,000 Parts Inventory
- Parts Locator For Those Hard To Find Items
- We Ship Anywhere. Local Delivery Available.
- Experienced, Knowledgeable Personnel.

LEFEVER BROS.
DILLSBURG

(717) 432-9697

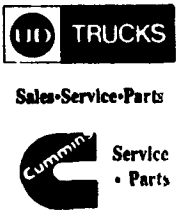
Quality Dealer Since 1921
406 U.S. Route 15 • Dillsburg, PA 17019



Mr. Goodwrench

Our 52nd Year
INTERNATIONAL TRUCKS
Sales • Service • Parts
IVECO
Parts, Service & Warranty

CENTRAL GARAGE INC.
S. 2nd St., Womelsdorf, Pa. 19567
215-589-4581



SALES - LEASING
STATE INSPECTION
ASE Certified Mechanics!

REPAIRS - All Make Trucks And Cars

NEW TRUCKS

1993 International 4700.....	25,500 GVW
1993 Nissan UD 2600.....	26,000 GVW
1992 Nissan UD 1300, 5 Speed.....	13,000 GVW
1991 Nissan UD 1800.....	17,000 GVW

USED TRUCKS

1990 International 4900.....	32,900 GVW
1988 International w/Van Body.....	28,000 GVW
1977 International 1854.....	30,000 GVW
1976 International Fleetstar, Automatic.....	35,000 GVW
1978 International.....	19,200 GVW
1985 Ford F350 w/Dump.....	10,000 GVW
1976 Chevy.....	23,160 GVW
1986 Iveco Z340.....	18,900 GVW

PRE-OWNED CARS & TRUCKS

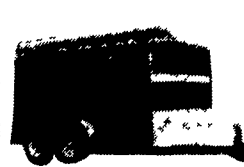
1991 Dodge Caravan - \$14,500	1986 Olds Firenza Sta. Wgn. - \$2,395
1979 Jeep - Mechanic's Special!	

ASSORTED NEW AND USED TRUCK BODIES FOR SALE!

- Heavy Duty Winch •
- Grain Bodies, Stake Bodies & Van Bodies, 14 Ft. To 22 Ft.

THIS WEEK'S SPECIALS

STOCK TRAILER



16 Ft.
SALE \$2800

Truck Body Insert



+ Installation **\$1695**

Landscape Trailer



16 Ft. Landscape Gate
P-205-15 New Tires
Brakes on All Wheels
7000 G.V.W. • Oak Floor
SALE \$1425

E-Z Dumper



Trailer 6x10
SALE \$2795

Scraper Blades



5 Ft. E..... \$120
6 Ft. E..... \$159
7 Ft. Heavy Duty \$240
8 Ft. Heavy Duty \$350
The International Line of Machinery

SPECIALIST IN FARM & LANDSCAPE EQUIPMENT

Ringo Hill Farms Equipment Co., Inc.

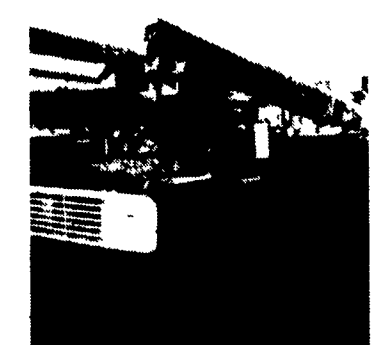
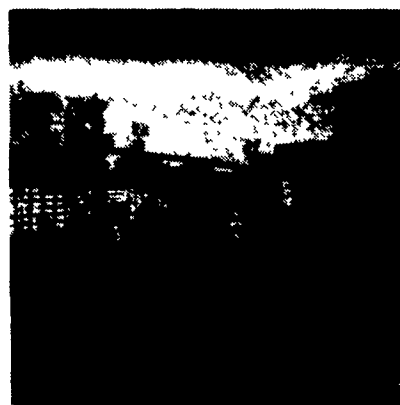
1624 Rt. 212, Pleasant Valley • Quakertown, PA 18951 (215) 346-7340 FAX: (215) 346-8041

CALL OR SEND FOR A FREE CATALOG

Huntingdon Equipment

Rentals Available **GOOD USED EQUIPMENT**

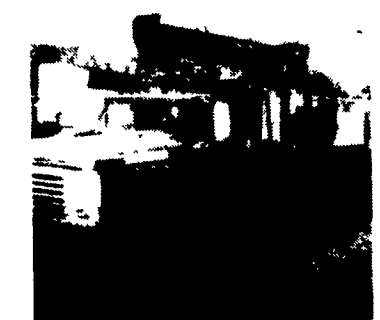
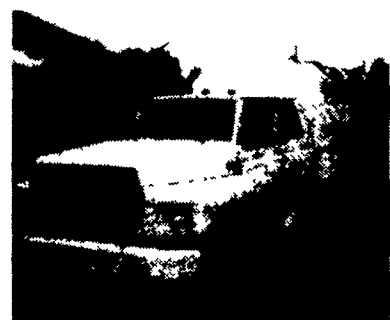
Huntingdon Valley, PA • 215-672-9667 • 1-800-543-3833 • Eddie



20 Ton P&H Crane 3 Sec. Hyd. Boom mounted on a 1968 F.W.D. both engine gas (new front 89), fleet maintenance.

Ford Squirt Bucket 40' To Bottom Of Bucket, Others up to 65', Call For Details

Dump Truck One of several - 1981 Ford F-600, gas, auto. We also have five man cabs with dumps and air compressors.



1985 F-600 8.2 Diesel, Auto, 5 Man Cab, Utility With Rollup Door On Rear. Clean, 20K Miles, Also 2-86 International 8.2 Diesel Auto 5 Man Utility. Low Mileage.

Ford Flat Bed with Pitman Boom 11,000 lbs. Cap, Also Front Winch, One of Three.

1979 Ford V8 10-Speed, Air, 14,000 Lbs. Boom, 2 Speed Auger, Upper Controls, 4 Outrigger, Dig Holes-Lift-Put Man In Air. This Unit Does It All.

DIGGER DERRICKS/AERIAL BUCKETS/UTILITY EQUIPMENT

MOTORS
New & Rebuilt
350, 366,
427, 454
6.2 Diesels
Rebuilt & Used
Will Install
Roll Back Service
(at cost)
717-762-6415