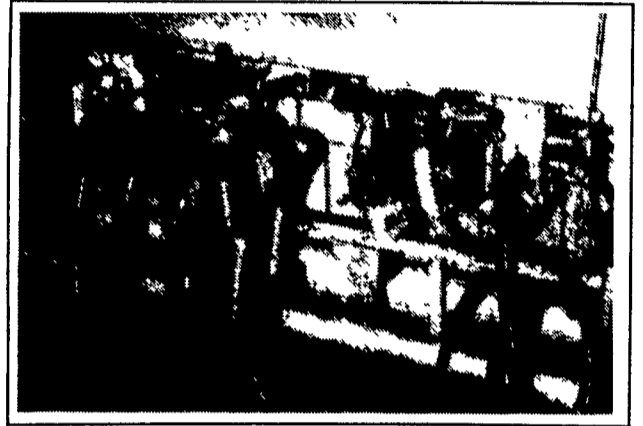


AGUIAR-FARIA DAIRY; A PARLOR DESIGNED FOR THE FUTURE —



At the Aguiar-Faria Dairy in Gustine, California, Pat Faria wanted the best for his new, double-24 parallel facility where he will soon be milking 2,000 head. Pat literally traveled around the country to find exactly what he wanted. "I wanted the best," Pat says, and his search led him to choose Westfalia.

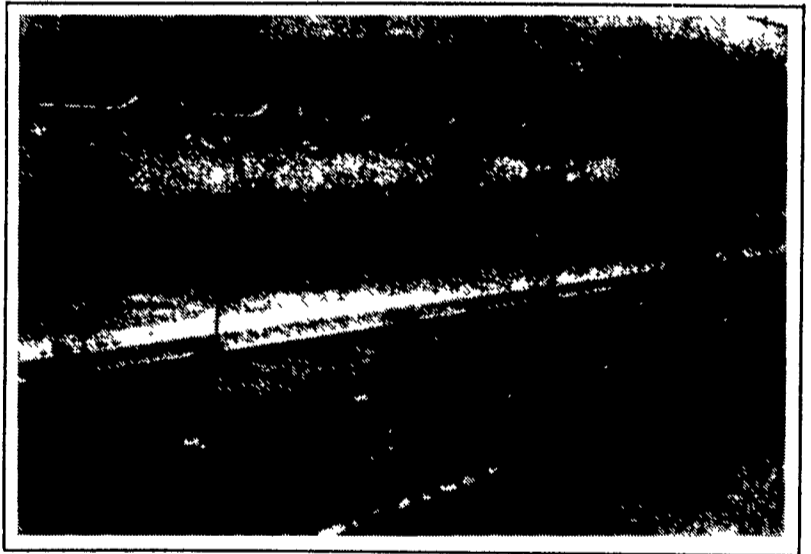
Westfalia provided the equipment for the future requirements of the Aguiar-Faria Dairy. Advanced equipment at Aguiar-Faria Dairy includes, Stimopuls stimulation pulsation, Metatron milk meters with automatic takeoffs, Dairyplan herd and milk management software, Bactron group backflush, and high-capacity 450 cc milking claws.



The milk meters, Back-Flush valves, CIP's, and lines are conveniently located under the cantilever cow platform



Pat Faria worked with Paul Miguel and Bob Gray of Merced Dairy Supply in equipping his new parlor. The well-engineered parlor will provide Aguiar-Faria Dairy with a milking system to grow with into the future.



The WESTFALIA METATRON control and takeoff cylinder mount in the cabinet incorporated into the double-24 parallel stalls

Westfalia is providing the equipment for the future of the dairy industry. Westfalia engineering is a commitment for leading-edge equipment and technology proven to be the best in the industry. Westfalia dealers are all trained to provide efficient, knowledgeable service on your dairy. This means you can rely on your Westfalia dealer to provide excellent service long after the sale.

As Pat Faria says, "Who knows what tomorrow's going to bring in technology? With Westfalia, we'll be ready, whatever the case may be."



Paul Miguel, Manuel Faria, Bob Gray and Pat Faria



WESTFALIA MILKING EQUIPMENT & COMPUTER SALES CENTER

BEDFORD, PA
J.S. BAKER AGRI-SYSTEMS
John Baker 814-623-2113

LEOLA, PA
FISHER & THOMPSON, INC.
Amos Fisher, Rick Thompson
Mark Ressler, 717-656-3307

PORT ROYAL, PA
WALNUT DAIRY &
BARN EQUIPMENT
Jonas King 717-527-2681
Levi Stoltzfus 717-436-9429

THURMONT, MD
INTERSTATE DAIRY
EQUIP. CO. INC.
Richard Strite
800-662-6559
301-271-7344

ROBERT TURNER
Westfalia Senior
Sales Engineer

CHAMBERSBURG, PA
WALTON'S DAIRY SERVICE
Gary Walton 717-352-7606

MIFFLINBURG, PA
WEHR'S DAIRY EQUIPMENT
Mark Wehr 717-966-1396

TROY, PA
DAIRYLAND SALES & SERVICE
Tom Roe
717-297-4128

SPECIAL WESTFALIA
DEALER FOR THE
AMISH DAIRYMEN

Pennsylvania,
Maryland,
Delaware,
New Jersey
West Virginia,
Virginia

HAMBURG, PA
SHARTLESVILLE FARM SERVICE
Dale Wenger, Craig Luckenbill
215-488-1025

NEW MILFORD, PA
SEGA'S DAIRY SERVICE
717-465-7506

WILLIAMSPORT, PA
LYCO DAIRY SERVICE
Steve Waltz- 717-494-0708

PARADISE, PA
Lloyd Ranck, 717-687-6361

717-677-9301
Mobile 717-880-2587