

74 C-65, 16 ft. dump 366 engine 5 & 2 Heavy Duty nice Tags at 40,000 lb.  
**\$5,000**  
**(301) 898-7426**

- 4 To Choose: 1992 Ford Club Wagon, XLT 15 Pass., Maxi-Van, 7.3 Diesel, Maroon, 25,000 Miles, AT, Dual AC, Loaded ..... **\$20,500**  
 1991 Chevy Sport Van, 8 Pass, V8 AT, AC, AM-FM, Blue, 68,500 Mi. .... **\$8,900**  
 1989 Chevy Celebrity V6, AT, AC, CR, AM-FM Cass., Brown, 62,000 Mi. .... **\$4,900**  
 1989 Ford Club Wagon XL, 15 Pass. Maxi-Van, V8, AT, Dual AC, CR, Tilt, AM-FM, Maroon/White, 57,900 Mi. .... **\$10,800**  
 1989 Olds Delta 88 Royal V6, AT, Loaded, Lt. Blue, 52,000 Mi. .... **\$7,900**  
 1988 Olds Cutlass Supreme V6, AT, Loaded, Black, 56,600 Mi. .... **\$6,900**  
 1988 Chevy Camaro Iroc-Z, 350 T.P.I, AT, Loaded, Black, 59,700 Mi. .... **\$7,900**  
 1988 Chevy 70 Box Tk, 33,000 GVW, V8, 5 Spd., AM-FM Cass., White, 39,400 Mi. .... **\$9,800**  
 1988 Honda Civic LX, 4 Dr., 4 Cyl., 5 Spd., AC, Tilt, PW, PDL, AM-FM Cass., Blue, 64,400 Mi. .... **\$6,600**  
 1988 Chevy 30 14 Ft. Cube Van, V8, AT, AC, White, 52,800 Mi. .... **\$7,900**  
 1986 Ford Club Wagon XL, Diesel, 12 Pass., Dual AC, AT, Tilt, AM-FM, Blue, 182,100 Mi. .... **\$5,600**

**Brubaker's Auto Sales**  
 Myerstown, PA  
 717-866-5237

# HENDERSON

## TARP & TRUCK COVER SERVICE

REAR 8 ANN STREET MIDDLETOWN, PA 17057  
**PH. (717) 944-5865**

Interstate 283 East-West, Take Harrisburg Airport Exit to Middletown or Take Exit 19 Pennsylvania Turnpike. Just 15 minutes from Harrisburg, PA.

★ WE SPECIALIZE IN ALL TYPES OF FARMING COVERS ★

**AUTHORIZED ANCR CARGO CONTROL DISTRIBUTOR**  
 Standard Weld On

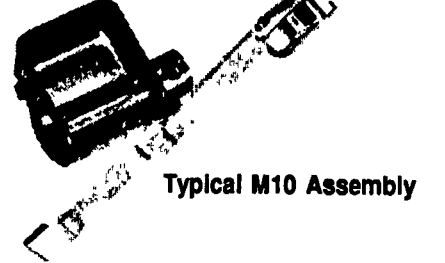


MANUFACTURERS OF  
**CANVAS & VINYL TARPS**

HERE'S A LISTING OF A FEW TYPES:

- |                 |                    |
|-----------------|--------------------|
| 1. Steel Tarps  | 5. Open Top Tarps  |
| 2. Mesh Tarps   | 6. Machinery Tarps |
| 3. Lumber Tarps | 7. Roll Tarps      |
| 4. Dump Tarps   |                    |

Repair Dept. at your Service.  
 \*We Accept Master Charge & Visa.  
 \*We Ship Anywhere!



Typical M10 Assembly

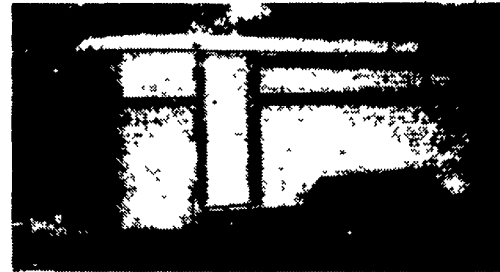
We Sell & Install Roll Tarps - Call for Pricing!

**WE ALSO SELL HEADACHE RACKS**

## \$\$\$ ALUMINUM LIVESTOCK TRAILERS ARE WORTH LOOKING INTO \$\$\$

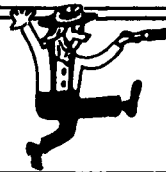
An Aluminum Trailer Offers Many More Years of Dependable Maintenance-free Service than Steel Trailers.

Many Aluminum Livestock Trailers are over 20 Years Old and still in Good Condition with High Resale Value.



**We offer the Best Priced Aluminum Bumper-Pull Livestock Trailer on the Market with the Following Features:**

- |                                        |                                            |
|----------------------------------------|--------------------------------------------|
| * Rubber Torsion Axles                 | * Full Swing Divider with 1/2 Walk Through |
| * Radial Tires on White Mod Wheels     | * Rubber Rear Bumper                       |
| * Extruded Interlocking Aluminum Floor | * Full Swing Rear Gate with 1/2 Slider     |
| * 3" Cross Members on 4" Centers       | * Recessed Rubber Mounted Rear Lights      |
| * 4"x4", Aluminum Rear Superstructure  | * Aerodynamic 36" Radius Front             |
| * All Enclosed Wiring                  | * 6'6" Inside Height                       |



**Hostetler Truck Bodies & Trailers**  
 Rt. 322 Milroy, PA 17063  
 717-667-3921

213 Acres, 120 freestalls, TMR double six parlor, 4 silos, liquid manure, large bank barn. Remodeled home, good Alfalfa ground 814-443-3295 Somerset

44A farm near Hammon-ton, NJ Completely re-novated 2BR house 9.5A producing apple orchard 14.8A tillable field next to golf course. Zoned 3.2A/ house Beautiful property, \$200,000 Owner financing available. (609)748-1612 Will also consider lease

50A farmland, 40 tillable, 10 wooded, 2300' state highway frontage. Property located adjacent to small state licensed airport. Excellent future investment. For sale by owner. 609-769-0597 If no answer, leave message.

95 ACRE FARM: Central 12-room modernized home w/60 acres tillable, pond, pasture & woodland, large barn, 2 garages w/henant quarters, double corn crib. Good potential for horses. Possible owner financing. Betty Chiaruttini, RT1, Box 385B, Delta, PA 17314, 717/456-7247.

Barn, 5BR house, 5A, along R-30. Commercial, Agriculture. Make offer. 717-442-8208.

Beautiful old country field-stone farm house on 13.7 acres in Wallace Town-ship. Ideal for horse farm Fox & Lazo (215)286-9793 (215)363-2100

Dairy Farm for sale Central Wisconsin, Marathon County 160 acres, 135 tillable. 6 bedroom house. Barn has 43 stanchions, pipeline and manure pit. Attached heifer barn. Will sell with or without personal property. Francis Niholai, D3481 County Trunk Highway M, Stratford, Wisconsin, 54484. Phone (715)384-5961.

Dairy farm for sale, Schuyler Co., NY, (near Ithaca, NY). 120 free stalls, double 4 parlor, 54'x99' tool shed (like new), 2 houses. 565A, 370 exceptionally productive tillable acres, 2 parcels Don't miss this one! For more details contact Don Yahn, salesman HARRIS WILCOX INC 716-494-1880

Mountain Land 42 Acres Northern Centre County Off of Route 144 Mostly Level, All Wooded \$21,500. 717-235-0515.

New York Farm for sale: 160 acres, mostly tillable, two fields, 60+ comfort stalls, young stock, 2 inch pipeline, 2 Harvestores, one concrete silo. House partly remodeled. Alfalfa corn ground. More land available. Call (315)668-6188. Ginny Root, Sales Rep.

Nice 125 acre dairy farm (Erie Co.), 110 ac tillable, nice stand of timber. 44 stanchion barn, pipeline, 20X60 silo, 60X80 machine shed, other out buildings, 5700bu. bin/dryer, 2 story house. Located on blacktop 4 miles from town and schools; \$185,000 Adjacent farmland available to rent. Cattle and complete line of equipment also for sale. (814) 438-2679.

NORTHEAST IOWA FARM for sale: Dairy, 160A, parlor could milk up to 180 cows, lots of buildings, 2 homes. \*\*\*200A FEED LOT: all slatted would handle up to 4000 head. FIRST ASPENSON REALTY 319-547-3881 ask for Don.

Northumberland, PA, Northumberland County 46A farm, farmhouse, bank barn, poultry buildings, fully equipped, zoned highway commercial w/850' road frontage along Rt 147. May be divided into 2 parcels: 1-6.25A w/house, barn and 490x30 poultry building; and 1-38.25A and 450x40' poultry building, 1-40x50'; and 1-425x30'. Priced to SELL! (717)473-8257.

## 36 REAL ESTATE

112A A-1 Wisconsin dairy farm, 53 stalls, 4BR house, sale by owner, \$110,000 (608)634-4392

12 acres farm land w/hard road frontage, in Saville Twp., Perry County, \$36,000. Anytime: (717)582-8777

140A farm w/buildings, 60A clear, silos, free-stall dairy shed, Southeastern Indiana County, PA (412)479-3898 (412)479-2288

165A dairy farm, 3 silos, TMR feeding, 3 grain bins, 50x108 machine shed, 40x75 farm shop, milking equipment Double-4 heringbone parlor, excellent water supply 4BR, 2 bath, brick home w/central air, outside furnace All buildings less than 19 years old (901)782-3665

20 ACRE FARM. nice house, barn, shed and more. Spring Glen, \$79,000. Call Chuck Workman, Century 21, Ryon Real Estate (717)628-4767

210 Acre Farm (#F-214), western PA, 150 acres tillable, 2 farm houses plus buildings, 3 gas wells, unlimited free gas Century 21 Roger Stone Agency 412/548-1545

**DAN PHELPS**  
WESTERN STAR TRUCKS

**GMC TRUCKS**  
READING, PENNA.

1987 GMC W-7 Single Axle Tractor; 220 HP; 6 Cyl Turbo Diesel; 5 Spd./2 Spd.; Air Seat; Only 110,000 Miles; Great City Horse! Lease III ..... **\$17,900**

LEASE IT

1987 GMC Cab & Chassis; 138" CA; 366 V8; 5 Spd.; PS; AC; 23,900 GVW; (For 18' Body); Radial Tires; Lease Maintained; Excellent Chassis, Ready For Body.

LEASE IT

1983 International 1724 24' Van; V8; 5 Spd.; PS; 23,000# GVWR, FRP Body With Wall Ramp ..... **\$4,995**

1985 Mack MS200 with 20' Van Body & Liftgate; 5/2 Trans; 10R20 Tires, 28,000# GVW ..... **\$8,495**

LEASE IT

1985 GMC W7; 24' Van; 6 Cyl. Turbo Diesel, 5 Spd./2 Spd., 29,760# GVW w/24' Morgan Van, 91" High, Barn Doors Rear ..... **\$9,975**

1978 Int'l 1850 Tandem Dump; DT466; 13 Spd. With 3 Spd Tandem Rear; 12/38 Axles; 14' Steel Dump With Air Gate; Reg 56,000 Lbs. .... **\$6,975**

SOLD

1985 Mack MS200 Chassis; 175 HP Diesel, 5 Spd., 27,000# GVW, 108,000 Miles, Nice Condition, Takes 18 Body ..... **\$8,495**

1979 Int'l 1924 10' Dump, V8, 5 Spd./2 Spd.; 30,000# GVW; Only 23,000 Miles ..... **\$7,995**

1977 Ford L8000; 10' Dump; 3208 CAT; 5 Spd.; 35,000# GVW; Air Brakes; New Paint; Only 59,000 Mi. .... **\$5,995**

1986 GMC 6000; 8.2N Eng., 5 Spd.; 12' Reefer Box (No Refrig Unit); 7,000# FA; 15,000# RA; 8.25x20 Rubber, 21,200# GVW ..... **\$5,995**

1986-1987's With 24' Bodies, 27,500# GVW, 366-V8; 5 Speed, 11R22.5 Rubber Call For Prices!

\*\*\*\*\*

**"WESTERN STAR" DEMO SPECIAL!**

1991 Tandem Axle Conv. With Set-Back Axle; Detroit Diesel "Series 60" (400 H.P.); RTX 14609P; 12/40 Axles; 184" WB; 2-Tone Red & White; Alum. Wheels; Air Ride Cab; Air Susp. & More!

**\$63,500**  
 FET Included!

**Call Today! (215) 777-1300 (800) 397-4041 Nat'l Wats**