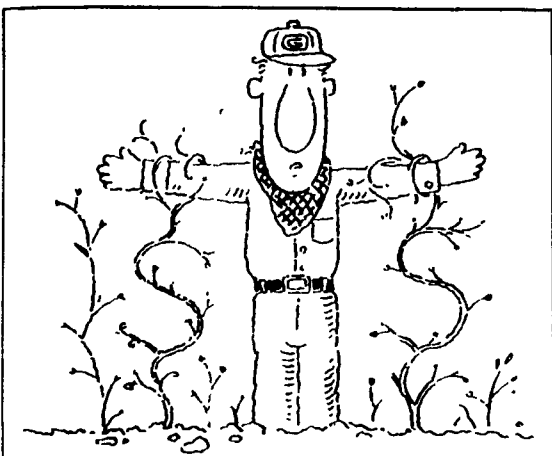


SAFEMARK



Take Root With Savings

* Receive a \$50 United States Savings Bond when you purchase two rear farm tires listed in this ad! See your Safemark dealer for details.

* Offer limited to four savings bond per person, expires 3-31-93

MULTI-ANGLE MB

- * Excellent drawbar pull with long-bar, short-bar lugs for improved traction.
- * Designed for improved stability and roadability, plus reduced vibration.
- * Strong angle-braced lugs have self-cleaning design.
- * High-strength polyester cord body and heavy duty rim shield help protect tire from damage.



Example Savings: 15.5x38 6 ply

Price \$289.00
U.S. Savings Bond - 25.00

Final Price: **\$264.00**

Size	Ply	Price	Size	Ply	Price
18.4x34	6	\$379	18.4x38	8	\$439
18.4x38	6	\$409	20.8x38	8	\$589

Participating SAFEMARK Dealers

Adams
Mar-Bar Tire Service
Hanover, PA 17331
(717) 633-6412

Biglerville Tire & Auto
Biglerville, PA 17307
(717) 677-8338

Yinglings Implement
Gettysburg, PA 17325
(717) 359-4848

Blair
Rhode's Farm Supply
Williamsburg, PA 16693
(814) 832-2491

Bradford/Sullivan
Histand Farm & Home Service
Rome, PA 18837
(717) 744-2371

Bradford
Isaac's Tire Sales
Canton, PA 17724
(717) 673-8121

Centre
Dunkle & Grieb
Centre Hall, PA 16828
(814) 364-1421

Chester/Delaware
J&L Tire Service
Chatham, PA 19318
(215) 869-0450

S.G. Lewis & Sons
West Grove, PA 19390
(215) 869-2214

Stoltzfus Farm Service
Cochranville, PA 19330
(215) 593-2407/2408

Clinton
Dotterer Equipment, Inc.
Mill Hall, PA 17751
(717) 726-3471

Columbia
Steve Shannon Tire Co., Inc.
Bloomsburg, PA 17815
(800) 343-TIRE

Yost Tire & Auto Center
Rte. 487, Benton, PA
(717) 925-2821

Crawford
J.D. Oil Supply
Springboro, PA 16435
(814) 587-2501

Cumberland
Barrick Tire Sales
Newville, PA 17241
(717) 776-5762

Erie
Mike's Auto Repair
North East, PA 16428
(814) 725-9091

Franklin
Forrester Farm Equip., LTD
Chambersburg, PA 17201
717-263-0705

Stoneham's
Waynesboro, PA 17268
(717) 762-3614

Bruce B. Gamble & Sons
Concord, PA 17217
(717) 349-2670

Fulton
Clugston Farm Equipment
Needmore, PA 17238
(717) 573-2215

Greene
Burns Tire Service
Waynesburg, PA 15370
412-627-8263

Lancaster
Leola Tire Service
Leola, PA 17540
(717) 656-2574

Messick Farm Equipment
Lancaster, PA
(717) 367-1319

Lebanon Valley Implement Co., Inc.
Richland, PA 17087
(717) 866-7518

Lehigh Co.
Kermit K. Kistler
Lynnport, PA 18066
(215) 298-2011
Joe's Battery & Tire
Allentown, PA 18103
(215) 437-4961

Millin
Miller-Lake, Inc.
Belleville, PA 17004
(717) 935-2335

Northampton/Monroe
Northampton Farm Bureau
Tatamy, PA 18085
(215) 759-3254

Northumberland
Rovendale Supply
Watsonstown, PA 17777
717-538-5521
717-742-7521

Schuylkill
Charles Snyder, Inc.
Tamaqua, PA 18252
(717) 386-5945

Somerset
Maple City Tire
Meyersdale, PA 15552
(814) 634-0545

Union
Mifflinburg Farm Supply, Inc.
Mifflinburg, PA 17844
(717) 966-3114/3115

Washington
Canonsburg Supply & Equipment Co., Inc.
Canonsburg, PA 15317
(412) 746-2500

David Cowden
Avella, PA 15312
(412) 587-3225

Wyoming Co.
J. Roberts & Son Tire Co.
Meshoppen, PA 18630
(717) 833-5582

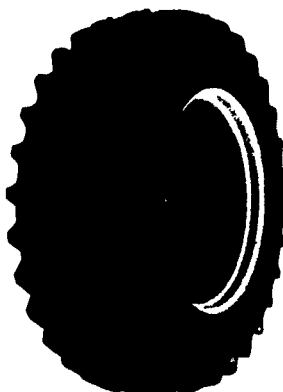
York Co.
Corn Hill Farm, Inc.
Etters, PA 17319
(717) 938-2012

POWER MARK

L/S RADIAL II

Radial Rear Tractor Tire

- Radial performance at a significantly lower price
- New cavity shape for low carcass stress and long narrow footprint improved durability
- Unique longbar/shortbar tread design with increased lug count for excellent roadability
- Continuous no splice tread improves tire uniformity and eliminates open tread splices
- Belt package gives excellent bruise and puncture resistance
- Engineered to full tire and rim dimensions
- Heavy duty trash shield for extra bead area protection with pry notch
- Size markings on lug face for easy identification in storage



SAFEMARK STEP UP TO QUALITY

SUPER SPORT AP RADIAL

- Excellent Off Road Traction And Lug Even Wear On The Highway
- Two Steel Belts For Strength And Stability
- Smooth Riding Polyester Radial Cord Plugs
- Wide Flat Footprint Radial Cord Plugs
- Wide Flat Footprint Gives Positive Traction In All Positions

SIZE	PLY	PRICE
P20575 R14	SL	\$51
P21575 R15	SL	\$55
P23575 R15	SL	\$60
L123575 R15	C	\$82
31x1050 R15	B	\$80
L121585 R18	D	\$78
L122575 R18	D	\$80
L123585 R18	E	\$85
L124575 R18	E	\$88

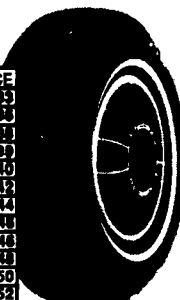


ECONOMY RADIAL

- All Season Tread Design Fights Hydroplaning
- Double Steel Belts Protect Against Bruises And Punctures
- Distinctive Outline Black Lettering

320 UTQG

SIZE	PRICE
P15580 R13	\$33
P16580 R13	\$38
P17580 R13	\$43
P18580 R13	\$48
P18575 R14	\$40
P19575 R14	\$42
P20575 R14	\$44
P21575 R14	\$48
P20575 R15	\$48
P21575 R15	\$48
P22575 R15	\$50
P23575 R15	\$52



SRV

- Two Tough Steel Belts For Puncture Resistance
- Polyester Cord Fills For Smooth Ride
- Distinctive Sidewall Styling For Premium Appearance

420 UTQG

WHITELINE	SIZE	PRICE
P15580R13		\$40.00
P16580R13		\$41.00
P17580R13		\$43.00
P18580R13		\$45.00
P18575R14		\$47.00
P19575R14		\$49.00
P20575R14		\$51.00
P20575R15		\$53.00
P21575R15		\$55.00
P22575R15		\$58.00
P23575R15SL		\$61.00
P23575R15XL		\$65.00

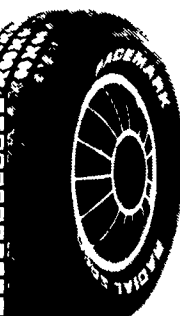


PAC F MARK

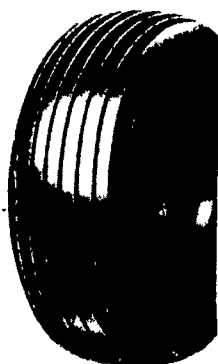
- "SR" Speed Rated For Quality And Integrity
- M+S Rated For All Season Traction
- High Traction High Mileage Tread Compound

320 UTQG

OUTLINE WHITE	LETTER SIZE	PRICE
P17570R13		\$51.00
P18570R13		\$52.00
P18570R14		\$55.00
P19570R14		\$58.00
P20575R14		\$60.00
P21570R14		\$64.00
P22570R14		\$66.00
P21560R14		\$64.00
P21565R15		\$68.00
P19560R15		\$58.00



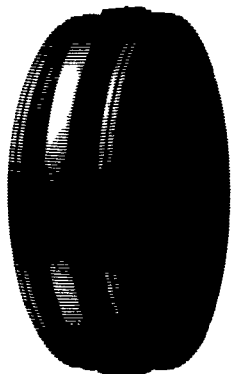
FARM UTILITY WAGON TIRES



Size	Ply	Sale Price
9.5L-15	8 Ply	\$44.00
11L-15	8 Ply	\$45.00
11L-15	12 Ply	\$64.00
12.5L-15	10 Ply	\$72.00
12.5L-16	14 Ply	\$89.00

SAFEMARK PREMIUM

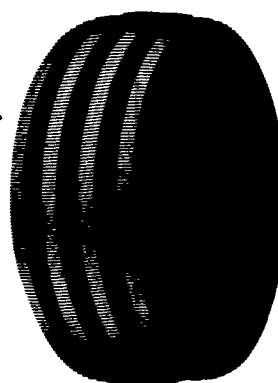
3 Rib



Size	Ply	Price
600-16	4 Ply	\$36.00
600-16	6 Ply	\$39.00
750-16	6 Ply	\$56.00
1000-16	8 Ply	\$82.00
1100-16	8 Ply	\$99.00

POWER GLIDE

4 Rib



Size	Ply	Price
1000-16	8 Ply	\$ 86.00
1100-16	8 Ply	\$109.00



SAFEMARK

Division of Pennsylvania Farmers' Association
Camp Hill, PA 17011

CALL TOLL FREE
1-800-PFA-TIRE

For Dealer Nearest You

A Proud Tradition of Quality,
Value and Service.

- QUALITY
- SERVICE

- DEPENDABILITY
- ECONOMY

**NOW SERVING
NEW YORK &
NEW JERSEY**