

**Greencastle Livestock**

Greencastle, Pa.  
January 25, 1993

SLAUGHTER CATTLE RECEIPTS: 655 HEAD. SLAUGHTER STEERS: 148 HD. TREND: 1.00 LOWER.

HIGH CHOICE AND PRIME 2-4 78.00-82.50; CHOICE 2-3 950-1075 LBS. 72.00-76.50; CHOICE 2-3 1075-1375 LBS. 73.50-78.25; CHOICE 2-3 OVER 1375 LBS. 69.00-74.75; CHOICE 4 ALL WEIGHTS 66.00-72.00; SELECT & CHOICE 1-2 950-1100 LBS. 65.00-72.75; SELECT & CHOICE 1-2 1100-1375 LBS. 64.00-71.50; SELECT & CHOICE 1-2 OVER 1375 LBS. 63.00-71.00.

HOLSTEINS: CHOICE 2-3 1050-1450 LBS. 63.50-72.00; SELECT 1-2 1050-1450 LBS. 58.00-63.00.

SLAUGHTER HEIFERS: 60 HD. TREND: 1.00 LOWER CHOICE 2-3 850-1000 LBS. 67.00-73.75; CHOICE 2-3 1000-1250 LBS. 73.00-79.00; CHOICE 4 ALL WEIGHTS 66.00-73.00; SELECT & CHOICE 1-2 850-1000 LBS. 64.00-71.75; SELECT & CHOICE 1-2 1000-1250 LBS. 65.00-73.00.

HOLSTEINS: CHOICE 2-3 1000-1350 LBS. 61.75-66.75; SELECT & CHOICE 1-2 1000-1350 LBS. 56.00-61.00.

SLAUGHTER BULLS: 34 HD. TREND: STEADY. YIELD GRADE 1 ALL WEIGHTS 63.00-71.00; YIELD GRADE 2 ALL WEIGHTS 56.00-62.00.

BULLOCKS: 9 HEAD. CHOICE 1-3 950-1150 LBS. NONE; CHOICE 1-3 1150-1375 LBS. 66.00-70.50; SELECT 1-2 950-1250 LBS. 67.50-74.50.

COWS: 404 HD. TREND: STEADY TO 1.00 HIGHER. BREAKING UTILITY & COMMERCIAL 47.00-51.50; CUTTER & BONING UTILITY 48.00-53.00, CANNER & LOW CUTTER 46.50 & DOWN.

STOCKER & FEEDER CATTLE RECEIPTS: 144 HD., TREND, VERY GOOD DEMAND, STEADY TO STRON-

GER. BEEF TYPES: 200-400 LBS. STEERS 80.00-108.00, BULLS 80.00-102.00, HEIFERS 76.00-98.00; 400-600 LBS. STEERS 76.00-84.50, BULLS 70.00-84.00, HEIFERS 74.00-84.00; 600-800 LBS. STEERS 76.00-81.50, BULLS 67.00-71.00; HEIFERS 70.00-78.50; 800-975 LBS. STEERS 67.00-75.00, BULLS 57.00-65.00; HEIFERS 65.00-72.00.

HOLSTEINS AND DAIRY CROSS: 200-400 LBS. STEERS 68.00-81.00, BULLS 64.00-76.00; HEIFERS, 80.00-119.00; 400-600 LBS. STEERS 64.00-68.50, BULLS 60.00-64.00; HEIFERS, 70.00-80.00; 600-800 LBS. STEERS 60.00-65.00, BULLS, 54.00-59.00; HEIFERS, NONE; 800-975 LBS. STEERS 54.00-61.50, BULLS, 47.00-55.00, HEIFERS, NONE.

CALVES: 557 HD. VEAL CALVES. TREND: STRONGER. CHOICE 150-300 LBS. 90.00-118.00; GOOD 150-300 LBS. 75.00-105.00; GOOD 100-150 LBS. 65.00-90.00; GOOD 80-100 LBS. 50.00-70.00; STANDARD 80-100 LBS. 45.00-60.00; STANDARD 80 LBS. & DOWN 45.00 AND DOWN.

CALVES RETURNING TO THE FARM: TREND. STEADY. HOLSTEIN BULLS OVER 100 LBS. UP TO 186.00, UNDER 100 LBS. UP TO 180.00, HOLSTEIN HEIFERS OVER 100 LBS UP TO 195.00, UNDER 100 LBS. UP TO 180.00, BEEF TYPE BULLS OVER 90 LBS UP TO 190.00; BEEF TYPE HEIFERS OVER 90 LBS. 150.00.

SHEEP & LAMBS: 40 HD. LAMBS: TREND: 5.00 LOWER. CHOICE 80-100 LBS. 65.00-76.00; 100-120 LBS. 68.00-75.00, 120 AND OVER, NONE, MEDIUM & GOOD ALL WEIGHTS 65.00-70.00; LIGHT LAMBS 80.00-100.00.

SHEEP: EWES LEAN 30.00-38.00, EWES FAT 27.00-33.00, BUCKS 21.00-30.00

GOATS: 99 HD. SMALL 18.00-38.00,

MEDIUM 35.00-60.00; LARGE 61.00-109.00.

HOGS, SOWS & BOARS: 159 HD. TREND: STEADY TO 1.00 HIGHER. HOGS, BARROWS & GILTS: 210-250 LBS. 40.00-42.00; 250-260 LBS. 40.00-40.50; 260-270 LBS. 38.00-40.00; 270-300 LBS. 36.50-39.50.

LIGHT HOGS: 140-180 LBS. 30.00-34.50; 180-210 LBS. 32.00-36.50. SOWS: TREND: 1.00 LOWER. GOOD SOWS UNDER 400 LBS. 31.00-36.00, GOOD SOWS OVER 400 LBS 31.50-35.50; CULL SOWS ALL WEIGHTS 30.00 & DOWN.

BOARS TRFND: STEADY 180-210 LBS. 32.00-33.00; 210-260 LBS. 31.00-33.00; 260-300 LBS. NONE; 300 LBS & OVER 28.00-29.00.

SALE EVERY MONDAY AT 2.00 P.M. & EVERY THURSDAY AT 1.00 P.M.

HAY & STRAW SALE EVERY MONDAY & THURSDAY AT 11:30 A.M.

SPECIAL FEEDER CATTLE SALE: FRIDAY, FEB. 5, 1993, AT 7.15 P.M. SPECIAL FEEDER PIG SALE: SATURDAY, JAN. 27, AT 1:00 P.M.

OKLAHOMA NATIONAL STOCKYARDS WEEKLY CATTLE SUMMARY: Compared to last week: Calves and stockers \$1.00-\$2.00 higher with excellent demand as this weeks mild weather improves wheat. Feedlot destined steers and heifers \$.50-\$1.50 lower with moderate demand. Quality plain through attractive. Weigh-ups improved for buyers, gaunt to average. Flesh condition highly varied with majority of feeders in fleshier categories. Liberal supply of thin stockers up to 700 lbs.; many calves in hard thin condition with short term weaned calves in the minority. Slaughter cows mostly \$1.00 lower. Slaughter bulls \$1.00 lower. Cow and bull demand moderate. Receipts this week 11,150; last week 11,887; last year 8,573. Run 58% feeders over 600 lbs.; 38% calves under 600 lbs.; 4% cows and bulls. Bulk price ranges follow. Weighted averages in parenthesis.

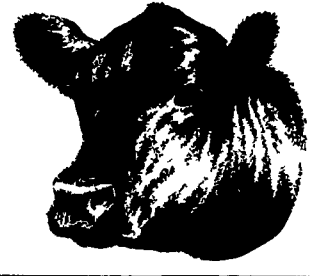
Feeder Steers: Medium and Large frame 1, 350-400 lbs. few \$105.00-\$111.00 (\$108.64); 400-450 lbs. \$103.75-\$113.00 (\$107.17); 450-500 lbs. \$101.00-\$108.00 (\$103.42); 500-550 lbs. \$96.00-\$103.00 (\$99.17); 550-600 lbs. \$91.50-\$100.50 (\$93.96); 600-650 lbs. \$88.00-\$94.00 (\$90.95); 650-700 lbs. \$87.00-\$91.25 (\$89.04); 700-800 lbs. \$85.00-\$88.25 (\$87.06); 800-900 lbs. \$83.00-\$87.75 (\$84.79). Large frame 2 Holsteins, 350-475 lbs. \$84.00-\$85.75; 525-600 lbs. \$75.50-\$78.50; 600-700 lbs.

\$72.50-\$75.50; 700-800 lbs. \$71.50-\$75.50; lot 805 lbs. \$72.00; lot 955 lbs. \$68.50.

Feeder Heifers: Medium and Large frame 1, 300-400 lbs. \$94.50-\$101.00 (\$98.05); 400-450 lbs. \$94.00-\$99.00 (\$96.50); 450-500 lbs. \$87.00-\$95.50 (\$93.16); 500-550 lbs. \$86.00-\$91.00, fancy, thin, and gaunt \$95.00-\$96.00 (\$89.56); 550-600 lbs. \$86.00-\$88.25 (\$86.73); 600-700 lbs. \$83.00-\$87.75 (\$84.91); 700-800 lbs. \$83.25-\$86.50 (\$83.80).

Slaughter Cows: Closing prices--Cutter, Boning Utility, and Breaking Utility Y.G 1-4, average dressing \$46.00-\$49.50; high dressing \$49.50-\$53.00; low dressing \$43.50-\$46.50.

Slaughter Bulls: Y.G. 1 1250-2150 lbs average dressing few \$58.00-\$60.00; high dressing \$63.00-\$65.75; low dressing \$53.00-\$57.00.

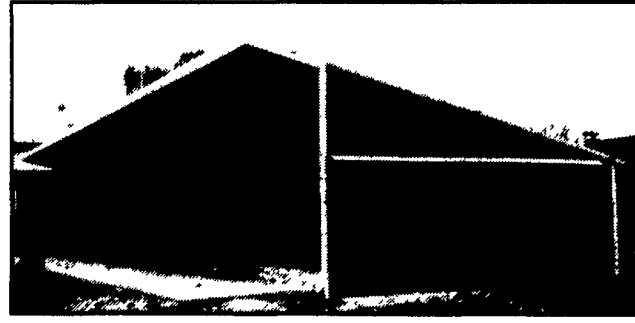


**Oklahoma City Feeder Cattle**

Oklahoma City, Okla.

Wednesday, January 27, 1993

\*\*ATTN: DODGE CITY\*\*



**26'x100' VIRGINIA STYLE HEIFER BARN**  
Winter Sale Now In Effect  
CALL FOR DETAILS

**Shelter For Your Livestock Investment**

When livestock is your livelihood, you want the safety and security of a Lester wood frame building.

Choose from our wide range of Uni-Frame® livestock facilities in standard and custom designs. Each constructed from only top quality materials

Engineered to withstand extreme weather. Supported by the nation's leading building company. And backed by the industry's leading warranty.

Visit your local Lester dealer or call 1-800-826-4439 today. From chickens to cows to hogs, Lester has it covered.

**VALLEY VIEW CONSTRUCTION, INC.**

2622 Valley View Road MORGANTOWN, PA 19543  
CALL (215) 286-5407 OR (215) 445-8317

© 1992 Butler Manufacturing Company

THE BRAND THAT MAKES THE DIFFERENCE.



LESTER BUILDING SYSTEMS  
A Division of Butler Manufacturing Company

**BOYDELL FARMS**

302 Iona Rd., Lebanon, PA 17042

Phone: 717-272-8943

**DISTRIBUTORS FOR:**

SILO QUEEN

2390-2402-2517-2518

**North Coast Seed Corn**

NEW 2525 LESS 4% 2329 BIRD FOOD  
PAID IN JANUARY

FIELD PEAS & TRICAL & PEA & MAGUM

**SOYBEANS**



3090 E 354-284-Shore Resnick - Pella NC

**TIMOTHY, TORO and CLIMAX TIMOTHY**

**ALFALFA**

84 VVAP VERNAL WETFOOT DISTRIBUTOR FOR GREAT PLAIN VARIETIES CIMARRON VR KEY BELMONT BLENDS

**BALER TWINE \$18.00**  
Payable By Jan. 31st

**FERTILIZER**

**OATS**

NOBLE PORTER OGLE HERCULES

**SEED OATS \$4.75 Per Bu.**

**CHEMICALS**

WHOLESALE & RETAIL

**Agricultural Producers**

Today's ag-markets are extremely volatile and likely will remain that way for the balance of this marketing year.

Let us help...

- Cash Grain Merchandising
- Cash Feed Stuff Sales (including cotton seed and hominy)
- Grain Forward Pricing
- Livestock Forward Pricing
- Full Service Futures Brokerage
- Market Consulting
- Rail-to-truck Facilities at Palmyra-Greencastle

IN USA - 1-800-722-6246

LOCAL - 1-717-838-7050



**NEW HOLLAND SALES STABLES INC. THE ACTION AUCTION**

LIVESTOCK IS OUR ONLY BUSINESS

**MONDAY**

**SLAUGHTER HOGS**  
EARLY BIRD HOG SALE  
7:30 A.M.  
Sell Your Hogs At New Holland Sales Stables, Inc.  
See them weighed, sold and pickup your check.

**10:00 A.M. HORSES MULES**

**1:30 P.M. BEEF SALE SHEEP GOATS CALVES**

**THURSDAY**

**Beef Auction 10:00 A.M.**  
BULLS, STEERS, BEEF COWS



**1:00 P.M. STOCKERS & FEEDERS**

**11:30 A.M. SHEEP GOATS CALVES**



**WEDNESDAY**

**HEIFER SALE 11:00 A.M. COW SALE 12:00 NOON**

**HEIFERS BULLS DAIRY COWS**

We have the usual run of 50 to 100 Heifers, all ages. Loads of fresh cows and springers from our regular shippers. Also some local fresh cows and springers.

**1:30 P.M. FEEDER PIG SALE**



Pigs are accepted after 6:30 A.M. State graded from 8 to 12. Dairy Barn and Feeder Pig Barn are cleaned and disinfected weekly for your protection.

**NEW HOLLAND SALES STABLES, INC.**

12 Miles East of Lancaster Off Route 23, New Holland, Penna.

**MANAGERS**

Norman & David Kolb - 717-397-5538  
Field Representatives:  
Luke Eberly - 215-267-6608 738-1865  
Homer Eberly - 215-267-3047  
Ron Ranck - 717-658-9849

Sale Barn Office Manager  
Roger Floyd - 717-354-4341  
FAX #717-355-0706

Order Buyer  
Paul Good - 215-445-6682