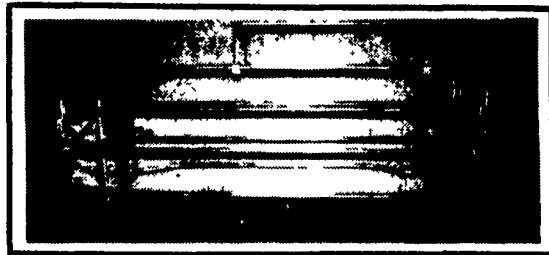


HOG CONFINEMENT EQUIPMENT

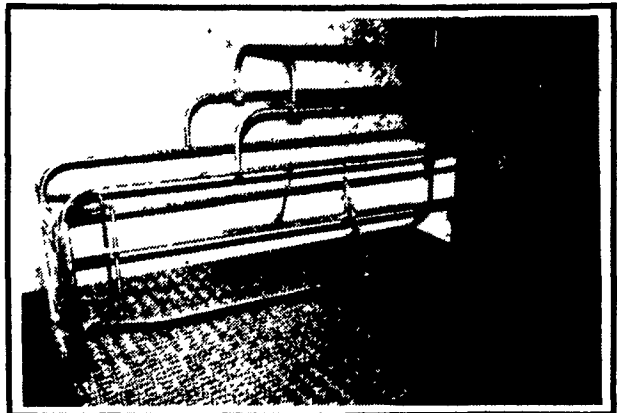


ADJUSTABLE SWING SIDE WITH PIG SAVER BAR

Mfg. By FARMER BOY AG FARROWING CRATES



EUROPEAN MODEL 70



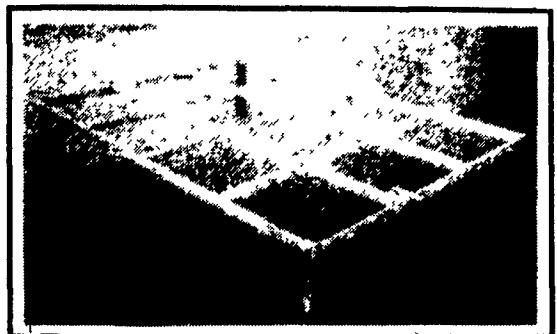
SOLID STEEL MODEL 60



BREEDING/GESTATION STALLS



HORIZONTAL FENCING
Also Available: Vertical Fencing



FLOOR FRAMES

CLEARANCE SALE! New & Used Farrowing Crates & Fencing, LP Gas Heaters

NEW

BOSS HOG FLOORING
HEAVIEST WIRE FLOORING MADE

Patented "Double Smooth" design — only from Boss Hog

SMOOTHER BETTER FOOTING SMOOTHER EASIER CLEANING LOOK FOR THE BUMP ON THE BOTTOM

Boss Hog's patented "Double Smooth" design plus the strength and durability of its exclusive 5/16" diameter wire make this your best flooring buy! Insist on Boss Hog, the wire with the bump on the bottom. From the nation's largest manufacturer of animal flooring.

CONTROLLED VENTILATION

Cold Weather Seal
Rust Proof Shutter
Energy Efficient Motor
Aerodynamic Polyethylene Hood
One Step Installation

Multifan System 1

RENCO PREG-TONE II

Swine breeders: Improve your efficiency by detecting pregnancy fast and early.

DOSMATIC PLUS medicator

MADE IN USA
WITHOUT ELECTRICITY
Accurate at all flow rates

DOS MATIC

SBMD THE DIFFERENCE

Marguerite and Oscar

IN FARROWING BUILDINGS OR NURSERIES, DIFFERENT TEMPERATURES CAN BE SET FOR DIFFERENT CRATES OR PENS, DEPENDING ON THE PIGS' AGE. THE SBMD WILL AUTOMATICALLY CONTROL EACH ONE INDEPENDENTLY.

Comfort Zone

QUALITY BROODERS/LAMPS

Complete With Guard And Hanger Two Piece Porcelain Replacement Socket With Screw Terminals

BROODER w/ 6' CORD & WIRE GRILL

HEAT LAMPS- RED OR WHITE AVAILABLE

PUMP OUT PIT FAN

FAN SIZE	FAN MODEL	MOTOR H P	PROP RPM	0	05
8"	POPF-8	1/15	3400	585	570
10"	POPF-10	1/6	3400	1155	1140

QUANTEM SERIES 50

Temperature Modulating Fan Speed Control

AGRICULTURAL HEATERS

L.B. WHITE
Nobody does it better

w/Hot Surface Ignition

- Durability
- Performance
- Safety
- Quality

From Farrowing To Nursery COUNT ON KANE QUALITY

Durable, High Density Polyethylene — No Rust! No Corrosion!

- KANE Sure Start Creep Feeders
- KANE Baby Pig Creep Feeders
- KANE Milk Replacement Feeders
- KANE Baby Pig Heat Mats

Put extra pigs in every litter.

Efficient SBMD downping heat gives you up to 7% more pigs weaned because they grow healthier and more disease free. SBMD stainless steel heaters are the most cost effective heating systems available today. Fuel savings can run up to 50% or more because you heat the pigs, not the air. Find out more today about SBMD heaters and controls.

* Field tests available upon request

PARTS

SBMD

- Thermocouples
- Filters
- Filter Holders

L.B. WHITE & Shenandoah

CURTAINS

Clear of Insulated Hardware Winches

SBMD CERAMIC BROODERS

Optimum Flock Performance For a Minimum Gas Consumption

VERTICAL VENTURI GAS BROODERS

20,000 to 40,000 BTU
30,000 BTU Standard Size

MODEL GB-UV

The 110-S Control combines a snap-action thermostat with 100% safety valve. It is calibrated for brooding temperatures from 78° to 110°.

24 Hour Service

Check Our Warehouse Prices

WE SHIP UPS

Swine & Poultry Systems Specialists

FARMER BOY AG. INC.

410 E LINCOLN AVE MYERSTOWN, PA 17067

PH. 717-866-7565

Hours: M-F 7:00-5:00; Sat. 7:30-11:30.

MasterCard VISA

Full Line Of Parts In Stock For Your Poultry And Hog Needs