

SNOW Equipment 1965 Michigan 125-A 3yd pay-loader dab Cummins \$6,900 1990 Swenson PV-350 salt/sand spreader \$1,975/BO 12' reversible funnel snow plow sub-frame \$600 (609)466-2953

WANT TO BUY all makes and models of construction equipment (301)694-6148 (301)371-9299 fax

WANT TO BUY all makes and models of construction equipment (609)691-0526 (609)696-5816 fax

Case Bulldozer 850 B, ROPS 6 way blade, runs very good, very good U/C \$15,000 (215) 767-2588

IH 886 Tractor w/cab & weights, 18x38 tires 80%, excellent condition
Farmall 656 row crop diesel, WF
IH Model 5100 grain drill, 16 disc
NH 718 Harvester w/both heads
NH Whirlifeed blower
Rebuilt NH 36 flail chopper
IH 450 4X plow, 3 pt., 16"
IH 435 baler w/thrower
Going Out Of Farming. All Good Condition From One Owner
814/634-5235

FOR NEW AND USED CONSTRUCTION EQUIPMENT PARTS AND ATTACHMENTS

CALL
H.E.L.P., INC.
1-800-446-0505

Specializing in Caterpillar Parts also available for Case, John Deere, IHC, Fiat, Etc. National Locator Service Available

HEAVY EQUIPMENT LOADER PARTS, INC.
R.D. #2 Box 2230 Route 22 Grantville, PA 17028

PARTS PRICED RIGHT DISMANTLING MOST MAKES & MODELS

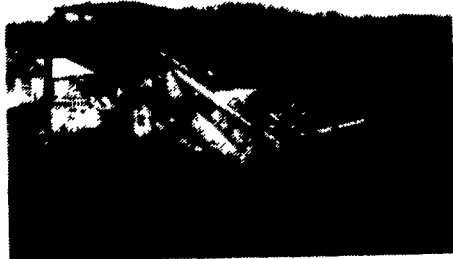
OF CONSTRUCTION EQUIPMENT
Cat IHC Gallon
Case Michigan Wabco
John Deere Hough Dynahoe
Trojan Terex Koehring
Drott Hein Werner AC/Flat Allis
& Others

Over 600 Machines Dismantled
NATIONWIDE PARTS LOCATING SERVICE
We have two Computer Parts Locator Networks. Nationwide & Canada, ready to serve you. In less than a minute over 400 Used & New Parts Dealers will receive your parts request. Parts are located easily & at substantial savings. Try Our Services.
Save \$\$\$ Parts Shipped Anywhere Direct To You. All Parts Guaranteed
"We Return All Phone Calls"

BALANDA EQUIPMENT CO., INC.
P.O. Box 407 - Route 29 - Palm, PA 18070
Phone: (215) 679-3900
Fax: (215) 679-8727
TOLL FREE: 1-800-322-8030

JD 450C Loader \$10,900
JD 310C, 4x4 BH w/Cab..... \$25,500
JD 450G, 6 Way Dozer..... \$29,500
JD 350 6 Way Dozer..... \$5,500
JD Construction Equipment
Thomas Skid Steer Loaders,
Sales and Service

J D EQUIPMENT
Pennsburg, PA 18073
215-679-5958



JD 350-B Crawler Loader
4 In 1 Bucket, New Rollers,
Very Good Condition
\$8500
717-374-5486

Case 252, 602, 1102 Rollers Demonstrators Call For Special Pricing

1985 Case 1080 excavator, approx. 2200 hrs \$37,500
1986 E80 SE, 4 WD, Cab, Extend a hoe.....Call For Pricing
1987 Case 580K Loader Backhoe, cab, extend a hoe..... \$27,900

Vernon E. Stup Co.
5859 Urbana Pike
Frederick, Md. 21701
301-663-3185



BOBCAT 732 Skid Steer Loader
Deutz Diesel, New Hydraulic Sector, 40% Tires, \$7,500
Want To Sell-Make an Offer
Curry Supply Co.
Curryville, PA
Call 1-800-345-2829

Lee Dull Equipment Co. Backhoes

Case 580 CK gas \$6,000
Ford 550 cab \$10,500
JD 310A..... \$10,500

Crawlers

JD 555 ROPS..... \$16,000
Case 350 w/Hoe \$9,500
JD 350B ROPS \$8,500
JD 350B..... \$8,500
JD 450 B ROPS..... \$10,500
Case 450 \$8,500
Cat D-3, 6-way, new motor..... \$13,500
IH D-6 Dozer \$2,500
Case W14 payldr, new motor..... \$10,500
(717) 949-2270

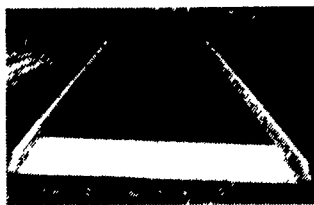


WENGERS, INC.

251 South Race St., Myerstown, PA 17067
717-866-2130

HOURS: Mon.-Fri. 7:30 to 5:00; Sat. 7:30 To Noon

NIGHTS, PHONE:
717-866-7147
717-273-9089
FAX
717-866-4300



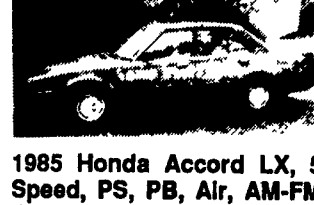
Portable Ramp, 9'6" Wide, 36' Long, 25,000 Lb. Capacity, Good Condition, Dolly Wheels, New Cost \$16,000.
\$6,900



Insley H1000 Excavator, Excellent Undercarriage, GM Diesel, Runs Good, Good Bucket, Reasonable.
\$13,500



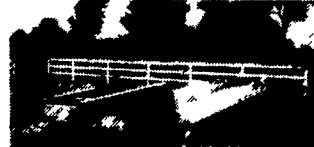
1981 Ford 5600 4x4 With Loader, PTO Pump, Good Tires, Dual Power, Very Nice Unit, Well Above Average.
\$14,500



1985 Honda Accord LX, 5 Speed, PS, PB, Air, AM-FM Cassette, Current Inspection, Charcoal Gray, 114K Miles, Dependable.
\$3,900



1979 General 3 Axle Tag-A-Long Trailer, 24,000 GVW, 15' Flat Ramps, 3' Beavertail.
\$1,999



25 Ton Hyster Lowboy, Will Take Tandem Tractor, 8.25x15 Tires, Beavertail, Good Condition.
\$4,900



Transport 35 Ton Detachable Trailer, Pony Motor, 15" Tires, Good Condition, Non-Ground Bearing.
\$9,900



1992 New 5 Ton Tag-A-Long, All Wheel Brakes, Adjustable Hitch, Adjustable Ramps, 16' Bed, Or 18' Bed Available.
\$1,995

(12) CRAWLER LOADERS

JD 440 Diesel - 1960? \$3,500
Case 350 - 1971 - Diesel \$6,900
JD 350 Diesel - ROPS - 1969 \$7,500
JD 450B - ROPS - 1972 \$9,900
Cat 977K - ROPS - 1970 \$11,500
JD 350C - With Hoe - 1977..... \$12,500
Cat 941B - 1974 - 4 In 1 - ROPS. \$16,500
Fiat FL9 - ROPS - 1979 \$17,500
Case 1150C - ROPS - 1981 \$19,500
Case 455C - ROPS - 1986..... \$22,500
Case 1155D - 4NI - 1983 \$26,500
CAT 983 - Cab - 1969 \$35,000

(7) BACKHOES

(9) Hoe Attachments From \$2,000
Ford 515 Diesel - 1975 \$8,900
IH 260A - Diesel - 1979 \$8,900
IH 270A - 1979 - Diesel \$9,900
JD 310A - ROPS - 1977 \$12,500
Dynahoe 200B - 4x4 - Big \$15,000
Ford 755 - Cab - 1984 \$18,500
JD 710B - EROPS - 1985 \$27,500

(4) TRUCKS/CARS

1982 Yamaha 650 Maxim Cycle \$1,500
1985 Honda Accord LX - 4 Dr. \$3,900
1972 Ford F600 Dump - Gas \$3,900
1989 Acura Legend L Sedan \$15,900

(3) TRACTORS WITH LOADERS

Kubota L345 - 4x4 - 3 Pt - PTO \$5,500
Versatile 150 - 4x4 - 3 Pt - PTO - 1977 \$8,500
Ford 5600 - 4x4 - 3 Pt - PTO - 1981 \$14,500

MISCELLANEOUS CONSTRUCTION

(50) New & Used Hoe Buckets COME SEE
(50) Loader Buckets COME SEE
(50) Set Forklift Forks COME SEE
(2) Tree Planter Each \$795
Giant Leaf Vacuum..... \$900
Ripper For Crawler..... \$1,000
Root Rake - 7' - New \$1,200
Sweeper - Pull Type - Gas..... \$2,000
Schramm 160 Air Comp. \$3,000
Large Snowblower For Loader \$3,000
Vermeer Stump Grinder \$3,500
IH 140 w/Power Broom- 1972 \$3,900
(7) Sheeps Foot 2 Drum Roller \$2,500/\$4,500
JD 5010 Scraper \$4,900
Construction Ramp, 36' Long..... \$6,900
Huber 1500 Grader - Diesel \$7,900
JD 760 Scraper..... \$9,900
Insley H1000 Excavator- 1974..... \$13,500
Gallon V05-84A Vib Roller- 84" .. \$19,500
Bucyrus Ene 45C Truck Crane.. .. CALL

(6) RUBBER TIRE LOADERS

Hough 90 Diesel - 1959 - 2.5 Yd. \$2,900
Versatile 150 - Cab - 1977 - 1.25 Yd. \$8,500
Prime Mover LD50 - 1983 - 1 Yd. \$9,500
Fiat 940 - Cab - 1976 - 1.75 Yd. \$13,500
JD 544A - Cab - Hoe - 2 Yd - 1971. \$16,500
Michigan 45C - 1979 - Cab - 1.75 Yd. - Bkt. & Forks \$21,500

(2) LOG SKIDDERS

JD 440A - Diesel - 1970 \$8,900
JD 440C - Diesel - 1980..... \$22,500

(9) DOZERS

IH TD5 - Winch - No Blade \$2,500
JD 420 - Gas - 1958 \$2,900
JD 350B - Diesel - 6 Way - ROPS... \$8,500
JD 350C-6 Way - 1984 \$12,500
Case 350B - ROPS - 6 Way- 1980 \$12,500
JD 450B - 6 Way - ROPS - 1973 . \$12,500
IH TD7E - 6 Way - 1984 \$17,500
Komatsu D65E - ROPS - 1976 \$19,500
Case 850C - ROPS - 6 Way - 1981 \$22,500

(20) TRAILERS

1991 5 Ton - Tag-A-Long - 6x16 . \$1,750
(2) 1992 5 Ton Tag-A-Long - 6x16 \$1,995
1979 3 Axle Tag-A-Long - 12 Ton - 8x18..... \$1,999
(2) 1993 5 Ton Tag-A-Long - 6x18 . \$2,195
1977 2 Axle 7 Ton Tag-A-Long - 8x18..... \$2,400
1978 3 Axle 11 Ton Tag-A-Long - 8x18..... \$2,700
2 Axle 12 Ton Tag-A-Long - 8x21..... \$2,900
18 Ton Tag-A-Long - 8x17..... \$2,900
1993 5 Ton Tag-A-Long - 8x18..... \$3,250
13 Ton 3 Axle Tag-A-Long - 8x20..... \$3,400
1984 11 Ton Tag-A-Long - 8x20 \$3,500
Rogers 35 Ton Lowboy - 8x27 \$3,900
1987 10 Ton Tag-A-Long - 8x23 .. \$4,200
1968 40 Ton Lo-Boy - 8x27... \$4,900
Hyster 25 Ton LowBoy - 8x27..... \$4,900
1992 9 Ton Tag-A-Long - 8x24..... \$5,850
1992 10 Ton Tag-A-Long - 8x24..... \$6,450
1973 Transport 35 Ton Detachable - 8x30 \$9,900

FORKLIFT

TCM 3000 Lb - Gas - Air Tires \$6,900

SKID LOADER

JD 90 - Gas - 1980..... \$4,500