

JD 2030, dual hydraulics, differential lock, power reverser, 90% rubber, like new condition, w/146 HD loader, excellent buy, \$11,000. 410/329-2151.

JD 375 skid loader 18 HP diesel, 160 hrs., utility light package, excellent condition, \$7600. York, PA. 717-266-0575.

JD 4010 Gas, NF, \$2400. Taneytown Farm & Hardware, 410/751-1500.

JD 401C, same as 2030, \$5,000. 410-833-9091

JD 575 Skid Steer Loader, like new, 91 hours, \$10,500. Southern York Turf & Tractor, Inc. 717/235-9400.

JD 606 Bushog, like new, \$1,250. (410)833-1847.

JD 714 Mulch tiller, 5-tooth, like new; heavy duty 3pt. scraper blade, like new. 717/733-0660.

JD 7200 finger planter, 4R, 2 years old, less than 900 acres, excellent condition. (717)862-3639.

JD 750, No-Till Drill, used 2 years, Excellent condition, \$14,800. Franklin Co. Phone 717/762-3403 or 301/739-6632.

JD 8' KBA transport disc, \$575; 10' Cultipacker, \$400; Int. 1100 pull-type mower, \$975; Grimm ground drive tedder, \$675; NI 7' cut conditioner, \$875; Arps 6' 3pt. snowblower, \$295; Farnall 300 w/PS & fast hitch, \$1750 215/562-4464.

JD95 Combine, cab, spreader, gas, 4R, 30' 13'grain, \$2000; IHPlow, trip, 3-12, \$100. 302/738-7830.

JD styled B, 1941, good condition, \$1400 OBO. 215-863-8553.

NH 818 2RW Harvester, excellent condition, \$400, JD 2030, dual hyd., diff. lock, power reverser, #146 loader, excellent, \$11,000. 410/329-2151.

New Holland L-250 Skid Loader Two Buckets 40Hrs. Can Deliver. \$5,850. Call After 4:30PM 717-349-2679.

New Holland self-propelled bale wagons: 1069, gas, C&A, 1305 hrs., excellent, \$25,900. 1069, gas, C&A, good, \$20,900. Super 1049, cab, excellent, \$15,000. 1049, cab, okay, \$9,900 above hold 160 bales. PULL TYPES: 1033, good, \$5,100. 1034, good, \$5,100. Roeder imp. Seneca, KS. (Local references available.) (913)336-6103.

Lancaster Farming, Saturday, January 30, 1993-D9

New & Used Parts For Oliver, Minn. Moline & New Holland. 717-333-4256

NH 56 hay rake. Top buggy. (717)355-9551.

NH 499 hydra-swing haybine. Field ready. (410)692-2055 days, (410)343-0816, evenings.

NH 782 Forage Harvester, electric spout; (2) Gehl BU910 forage wagons 3 beater with roots; JD 494 cc.n planter. Very good condition, 717/458-5193.

#76 Int. pull-type combine, good working condition Chester County. (215)932-5873.

JD 14' Field Cultivator; JD 4 Bottom Hydraulic Reset Plow, Good Condition, \$650; Ford Golden Jubilee Tractor, New Paint, Runs Very Good \$2750. 609-767-0444.

JD 1600 10' chisel plow, 3pt, \$1,100. JD F145 4x16 semi mounted plow, hill-side hitch, \$700. (717)362-3575.

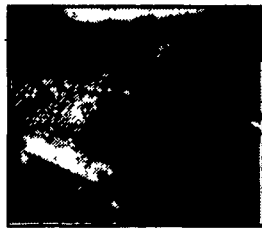
(717) 428-1517 or 717/741-1797
Fax No: (717) 428-2990

RR 2 Box 314A, Kreidler Rd.
York, PA 17403
(Exit 3 Off Interstate 83)

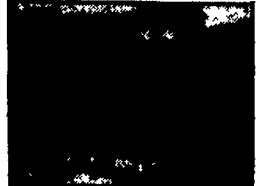
Douglas

EQUIPMENT & SUPPLY CO.

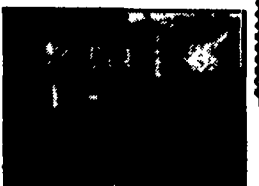
Many Pieces Not Listed!
If You Don't See It - Give Us A Call!
CALL US FOR MEYER SNOW PLOWS



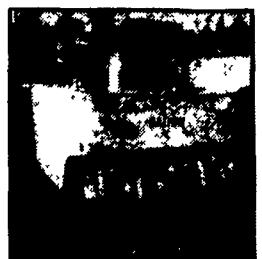
Kubota Snow Plow Tractor, L2550, 25 HP Diesel, 938 Hrs., 7' Meyer P/A Snow Plow



IH 2400, Cab, Heater, P/A, Plow, Gas, P/S, \$3,500



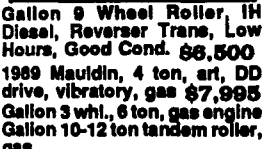
(2) Gallon 10-14 Ton Tandem, 4 Gas, Hydrostatic, Good Cond. Gallon 10 Ton 3 Whl.



Austin Western Pacer 30C AWD, AWS, 4-71 GM Diesel Front Scarifier, Front Plow Hitch, Good Cond. \$5,950 Huber F1700 tandem grader, diesel, power shift, \$8,500



Huber Maintainers "We Got 'Em"
(1) M-650, Ford Diesel, Front Blade, Wide Tires, ROPS.
(2) M-600, Ford gas, front blade
(1) M-500, Cont. Gas, Front Blade, Wide Tires.



Gallon 9 Wheel Roller, IH Diesel, Reverser Trans, Low Hours, Good Cond. \$6,500
1989 Maudlin, 4 ton, art, DD drive, vibratory, gas \$7,995
Gallon 3 whl., 6 ton, gas engine
Gallon 10-12 ton tandem roller, gas



Forklifts
(2) Gradall 534B-5 34', 6000 Lb., 4WD 1) 1987, 1) 1985
Pettibone B66 Ford Diesel 33' Lift, 6000 Lb. Cap, 4 WD, 4WS, New Tires



1989 Puckett Bros T-450, Power Box, 648 Hrs., Excellent Cond. \$9,900

Coming In...
Gradall G660, gas down, del up, v.g. cond.
Gradall G440, del up & down, exc. cond.
Case 580CK Loader Tractor

Just In
Int. Dump Truck w/Plow & Spreader
Ford F7000 Dump Truck, Del, Air Brakes
Power Boss Sweeper, High Dump
Bomag BW120, late model, low hrs.



Case 584D, 21' Mast, SS, 4,000 Lb. Cap, New Rubber, Excellent Cond. \$15,500



Snowline V4 Wisconsin 4 Spd. w/Reversible Plow



1989 Shinniu Tractor, New Never Sold, 24 HP Diesel, PTO, 3 Pt., Lights, Parts Available

Best Buys in Used Equipment

TRACTORS

IH 424	IH 574	ST Panther II
IH 484	IH 5488	JD 4630
IH MD	Case IH 395 w/Loader	(2) JD 4430
IH 656	(2) Case 2670	JD 2940 MFD
IH B	Case 1845C Skid Steer	Ford Dexta
IH 4586	Case IH 495	Versatile 256
IH 1586	ST PT350	AC 6140
IH 3588	(2) ST 251	

DISCS

AC 2600, 26'	IH 770 Off Set, 26'	Oliver 12'
AC 2500 16'	KR 4926A, 22'6"	JD 14'
BH 16'	KR 4927, 25'	JD 235, 18'
Case 18'	KR 2440	JD 210, 15'
Case 30'	KR 4907 25'	JD 230, 20'
IH 496, 22'	KR 1966 31'	JD 310, 16'
IH 470 15'	(2) KR 1927, 25'	

FIELD CULTIVATORS

JD 22' Field Cultivator	Glencoe 21' Field Cultivator
KR 4129 42' Field Cultivator	IH 45 Field Cultivator 15'
(2) KR 3131 Landsman	IH 4500 Field Cultivator, 27'
KR 4100 37' Field Cultivator	IH 25' Field Cultivator
KR 3121 Landsman	Brady 15' Field Cultivator
KR 3122 Landsman	SF 25' Landsman
Case 26' Field Cultivator	WR 24' Field Cultivator
Glencoe 18' Field Cultivator	

PLOWS

CI 5600 Chisel Plow 11'	IH 700 7x16 Plow
CI 800 Plow, 9x18	Athens 156 Chisel Plow
SF 2330 Chisel Plow	JD 2350-2450 8x18 Plow
Ferguson 10' Chisel Plow	JD 5x18 Plow
IH 165 Plow 4x18 Rollover	JD 2800 8 Bottom Vari Width
IH 700 Plow 8x16 OL	KR 2321 Chisel Plow, 24'
IH 55 Chisel Plow	Oliver 568 Plow, 6x18

MISC. TILLAGE

UM 35' Dbl. Rolling Baskets	BR 28N Packer
DMI Tiger II Subsoiler 7 Shank	BR 14' Cultimulcher
Tebbins 7 Shank Subsoiler	BR 25' Cultimulcher
KR 3613 Land King	BR 12' N Cultimulcher
DL 14' Packer	BR 25' CF Packer
DL 16' CF Packer	BR TP18 Packer
DL 34' CF Packer	IH 153 Cultivator, 4 Row
Lely Rotera 12'	

MISCELLANEOUS

AC 333 15 Row Planter	JD 27 Shredder 15'
GP 24' Conventional Drill	JD 158 Loader
CI 5400 No-Till Drill	JD 8000 Drill, 21x7
CI 5300 Drill, 24x6 w/cultiplanter	IH 5100 Drill, 21x7
CI 5100 Drill, 24x6	KR 5215 Drill, 15'
John Blue 500 Gal. Sprayer	NH 352 Grinder Mixer
JD 8300 Drill, 21x7	NH 354 Grinder Mixer

HAY EQUIPMENT

CI 8580 Baler	NH 90 Bale Stacker
Hesston 4900 Baler	MF 560 Round Baler
NH 56 Rake	

COMBINES

Case IH 1460	JD 4400	JD 9600
Case IH 1480	(3) JD 6620	MF 760
IH 1440	JD 7720 4WD	MF 540
IH 1460	JD 7720	NH TR 85
IH 1480	JD 8820 Titan II	NH TR 86

Large Selection Of Cornheads And Platforms Available

HOOPER
HOOPER EQUIPMENT INC
MIDDLETOWN, DE

(302) 378-9555 1-800-341-4028

Case

WINTER SALE We gotta move this excess Equipment



1980 Mack "R" Model 300-6 sp; p/s; wet-line; all exc. radial tires; sliding 5th wheel. New air high back seat; sunvisor exc. truck \$14,500 \$12,500



Hale Gooseneck Flat Bed Trlr, 36' Floor, 8' Deck, 7.50 16 Tires, 8,000 GVW \$2,800 \$2,200



1979 Chev Alum. Step Van 350; a/t; 10' alum. box \$2,990 \$2,500

Year	Description	Price
'72-'75	Autocars 425 Cats, 13 Sp, Air Ride, Exc. Radials, Sliding 5th Wheel, Fleet Maintained, Exc. Condition, Starting At	\$8-10,000
Tankers	15 Aluminum 6-8000 gals. various years - All Road Worthy, All currently running, Good Condition	\$4-\$9,000
Engines	Cats 425 H and 8 Blocks With Misc. Parts all for only	\$3,000 OBO
Crane	Northwestern Track, good operating cond., Detroit Diesel, 40' Boom	\$7,500
'73	Trailmobile 40' box trailer, Real good Road Worthy	\$2,500
	8' Disc Complete	\$100
1969	Cash Register's 100 Sweden Elec-Comp	\$20 each
	Chevy 2T, Step Van 6 Cyl	\$1,500
	Homemade Trlr T/A 16'	\$700
	(2) Allis-Chalmers HD16 Dozers, One needs a Crank, under carriage is excellent, 2nd dozer for parts only, Both for only	\$1,500
ANTIQUES		
'56	T-Bird Black with Red & White Interior, Hard & Soft Tops, Opera Windows, Excellent Cond. Rare 3 Speed Trans	\$22,000
'47	Chevy Coup 2-Door Original - Real Good Contition	\$4,900
'55	Chevy Bel Air 2 Door Hardtop Red & White, ground up restoration, Excellent Condition, all original specs, 800 Miles on Motor	\$14,900
'55	Cad' Coup-Deville, fully powered, engine runs, needs restoring, have 2 add'l cars to use parts off of - All for	\$3,500
	Genuine Amish Buggy - Fully enclosed, Excellent Condition	\$3,500

WHITEFORD FARMS
410-879-0563

OR 717-456-7497 after 6 p.m.

Located south on Rt. 74 at the very northern tip of Harford Co. or below Lancaster and York, PA

