

WIMPLE ASSOCIATES

140 COW FREE STALL: 325 acres with 200 tillable, graded slopes; good corn and alfalfa ground. 1200 tapped maples. Real nice free stall barn could milk up to 150; has Surge parlor w/auto take-offs, (2) 24x60 unloading silos, 9 & 12 ton grain bins, 900 ton bunker. Ample heifer facilities. Excellent 9 room, 2 bath home, 2nd home available. \$265,000.

SUPER LAND...STONE HOME: 250 acres near Richfield Springs in Honeoye soil belt. Barn has 72 stalls with pipeline milking 40, concrete yards, 16x40 silo. Impressive 3 bedroom, 2 bath stone home with 3' thick walls. Asking \$240,000.

MORT WIMPLE ASSOCIATES
SLOANSVILLE, N.Y.
518-875-6355
FAX: 875-6749
FREE DAIRY CATALOGUES

STOVER/SLICK, INC.

814/623-7009
Bedford Co.
144 Acre Farm,
2 story brick house,
barn
\$165,000

400 +/- ACRES
Beautiful Bedford Va. Mountains... Pastures... Bold Stream.. Cottage.. Barns and Magnificent Views!
Mabel Heath (703) 586-3176
or C-21
Joan Robbins & Assoc. (703) 586-5500

HUNTINGDON COUNTY



4 1/4 miles N. of Shade Gap on Route #35 184 acres, 44 crops, 23 pasture, 113 woods.

DAIRY OPERATION: Parlor, 58 freestalls, inside bunk feeder, 2 silos, machine shed, 2 story bank barn, 9 calf condo, 2 story house: 7 rooms and bath w/elec. heat. Also will sell cattle and machinery. More land and building available to lease.

Call Owner at **(814) 259-3331**

SOUTHERN HUNTINGDON CO., PA

230 Acre Dairy Farm, cow barn w/38 stanchions, pipeline milkers, barn cleaners, bulk tank, bank barn, 20'x60' silo w/unloader, out buildings, stream. 7 room, 1 bath home. Just in time for spring.

KOONS REAL ESTATE
717-597-8300

Lancaster County, PA

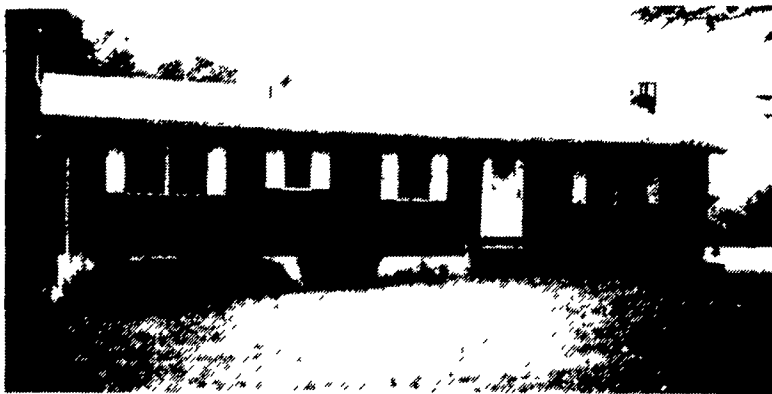
105 Acre Beef Farm Near Millersville. A showplace in a long lane, 6 horse stall barn, riding area, the farm is in good condition and an excellent producer. Has bulk feeder, unloader, 2 silos, set up for 325 or more steers, also tobacco sheds for 25 acres, modern 60'x36' workshop, beautiful spacious 5 BR, 2 bath brick home with a huge outstanding family room (Home was completely remodeled recently) Maybe a possibility of sub-dividing and selling off lots Call today. **ASK FOR CURTIS HESS TO MAKE AN INSPECTION**
Highly Motivated Seller, Price Dramatically Reduced Open For Offers
CALL 717-397-3571
ANNOCI K. GRAYBILL JR., INC.

WHOLESALE AND RETAIL GREENHOUSE

Six heated greenhouses attached to a 4,000 sq. ft. block building with walk-in cooler, 3-bay garage and retail/work/office areas, 3 bedroom apartment above on one end, and 4 bedroom apartment above on opposite end. Reading Area..... \$295,000

RICH BRANDT FARM REAL ESTATE

2033 Penn Avenue, West Lawn
Reading, PA 19609
(717) 274-3622 - office - (215) 678-1122



Fairfield, PA
LIVE THE "GOOD LIFE"

In this magnificent 24+ acre private setting. This home includes 3 bedrooms, 2 baths, large family room with fireplace and wet bar, beautiful 20x44 inground pool and heated insulated Morton building. \$194,900.00 #39371

Call Laverne Goss
Sites Realty, Inc.
1-800-288-5867

Lancaster County Farms

- **120 Acres Dairy Farm** - Silos, milking and heifer facilities for 75 cows - manure storage, machine storage, 2 story stone house, 4 bedrooms, pond, 96 acres tillable. Excellent condition under \$5800.00 per acre. Colerain Twp.
- **170 Acres Dairy Farm**, silo, room for 100 dairy cows, manure storage, 4-bedroom house, many extras, 150 tillable, under 6,000.00 per acre. Drumore Twp.
- **101 Acres Farm** - stone home, small barn, stream, fertile soils, 73 tillable, nice setting, Fulton Twp.

Land

- **39 Acres Manheim Twp.** - zoned residential, great location, lots of potential.
- **40 Acres Colerain Twp.** - zoned residential, lovely setting, close to major roads, privacy.
- **12 Acre Horse Farm** - House, barn, silo, pond, pasture, many possibilities.

If you want a farm or have a farm to sell Call, we may be able to satisfy you.

Specializing in Farm & Investment Real Estate

Century 21 Wagner-Hatton & Associates

Invest properties - Tax exchange opportunities for any buyer or seller

Ken Rutt Farm Specialist Ray Stoltzfus
786-3591 (H) 786-1300 (O) 548-3785 (H)

CENTRAL VIRGINIA

GREAT LIVING! LOW TAXES.

"Merequeen Farm", 320 beautiful acres, great ranch home overlooking James River, guest cottage, pool, Mgr's home and much more \$695,000. Video upon request.

308 acre cattle farm, ranch home, 5 acre lake, 165 acres in grass. Great buy \$335,000.

85 acres, small home, \$115,000.

382 acres, 228 acres open, outbuildings, \$389,000.

Secluded 308 acres, 148 acres pasture. \$175,000.

36.5 acres retirement tract. \$29,200.

"ON GOLDEN POND"

Nice 7 room, 2 bath log home overlooking a 12 acre lake on 72.5 acres. \$185,000.00.

RIVER FARM

548 acres with long river frontage. Great buy for \$535.45 per acre.

"FREE Brochures upon request"

Contact "Mike" or "Kip" Lafoon

Coldwell Banker

Lafoon Realty, Inc.

720 Oak Street, Farmville, Virginia 23901

1-800-767-6191 or 804-392-6191

After 5, Mike **804-392-4375**,

Kip **804-392-3002**

215 ACRE DAIRY IN FRANKLIN COUNTY... Limestone soils... 3 houses... complete dairy complex for 90+ cows... heifer facilities... good family operation... call for further details.

236 ACRE FARM IN BEDFORD COUNTY... excellent potential for dairy, beef or hogs... good 4 bedroom house... 2 mobile homes... 2 ponds... manure storage... lots of silo space... retiring owner wants to sell.

130 ACRE GENERAL FARM... Fulton County... newer 4 bedroom split level home... bank barn... pond... nice rolling ground... lots of road frontage.

270 ACRE BEEF OR HORSE FARM... Huntingdon County... 3 bedroom Cape Cod... 6 year old steel loafing barn... bank barn in excellent condition... good loam soil...

NEW LISTING - 90 ACRES, 70+ Tillable... Good Beef Operation... 44x189 Loafing Barn.. 2 Silos... Large implement shed... Heifer Barn Plus A 4BR, 2 1/2 Bath Ranch House. All For \$259,000.

FOR MORE INFORMATION ON THESE PROPERTIES CALL OUR OFFICES AT:

17 N. Main Street
Mercersburg, Pa. 17236
(717) 326-3133



628 East Baltimore Street
Greencastle, PA 17225
717-597-8161

1047 Lincoln Way West
Chambersburg, PA 17201
(717) 264-4300

1200 Dual Highway
Hagerstown, MD 21740
(301) 797-1717

N.J., Salem County, Pilesgrove Twp. Approx. 3 miles east of Woodstown. 135+/- Acres @ \$3,700/Acre.

N.J., Salem County, Mannington Twp. Approx. 1 mile from Delaware Memorial Bridge. 210+/- Acres @ \$5,000/Acre.

N.J., Salem County, Mannington Twp. Approx. 5 miles from Delaware Memorial Bridge. 172+/- Acres @ \$4,900/Acre.

N.J., Cumberland County, Millville, N.J. - 18 stall horse barn, 1/2 mile stone dust track on 34+/- Acres. Total - \$165,000.00.

N.J., Cumberland County, Hopewell Twp. - 112+/- Acres of farm land, partially in peach orchard w/cold storage plant, 3 houses, labor camp & packing house - \$625,000.00.

N.J., Cumberland County, Deerfield Twp. - 67.66+/- Acres @ \$1,500/Acre. Partially wooded.

N.J., Cumberland County, Upper Deerfield Twp. - 20+/- Acres Christmas tree farm - 5 bedroom home overlooking Silver Lake. \$295,000.00.

N.J., Gloucester County, Elk Twp. - 56+/- Acres on Aura Clayton Road @ \$6,000/Acre.

109+/- Acres on Richwood Aura Road @ \$5,500/Acre.

S. KELLY REAL ESTATE AGENCY
R.R.#8, BOX 218-A, LANDIS AVE.
BRIDGETON, N.J. 08302
609-455-8820



1525 Science St., State College, PA 16801
814-231-0101

"FULL TIME, FULL SERVICE, EXPERIENCED."

Contact: **DON C. MYERS**
Residence: (814) 422-8111
KENNETH L. HALL
Residence: (814) 387-6273



THE ADVANTAGES OF LISTING YOUR FARM WITH A RESIDENTIAL REALTOR:

- ☑ Quality Advertising
- ☑ Professional Brochures
- ☑ Ag Progress Days Exposure
- ☑ PA Sportsman Show Display
- ☑ Computer Deed Plots
- ☑ Measurement of ASCS Photos
- ☑ Knowledgeable About Soils
- ☑ Maximizing YOUR return

THE ADVANTAGES OF LISTING WITH A PROFESSIONAL FARM AND RURAL PROPERTY DIVISION:

- ☑ Quality Advertising
- ☑ Professional Brochures
- ☑ Ag Progress Days Exposure
- ☑ PA Sportsman Show Display
- ☑ Computer Deed Plots
- ☑ Measurement of ASCS Photos
- ☑ Knowledgeable About Soils
- ☑ Maximizing YOUR return

If you want the best professional farm real estate service available in Central PA, we would be pleased to be of service to you.

Many farms, farmettes and parcels available. Call or write for free lists, or see our bi-weekly Lancaster Farming inventory ad in the January 23rd issue.