

## USED TRUCKS



1989 Ford F-250 4x4, 8600 GVW, 351 FI, Auto, PS, PB, AC, AM&FM Stereo, Rear Sliding Window, Dual Tanks, 45,000 Miles.

**\$11,500.00**



1990 Dodge D-250 4x4 Club Cab, 8600 GVW, 360 FI, Auto, PS, PB, AC, PW, PDL, Cruise, Tilt Wheel, Rear Sliding Window, AM&FM Stereo, Local One Owner

**\$10,900.00**

Financing Available

### MARTIN'S AUTO SALES

1025 W. Main St., New Holland, PA 17557  
**(717) 656-6621**



**1968 Ford Oil Truck**  
2400 Gal. Capacity, Electric Hose & Reel, Meter, Real Good Condition  
**\$2900 OBO**  
**717/626-2569**

## YES!! ENGLE FORD DOES MAKE IT EASIER!!

Over 100 New & Used Trucks, Vans & 4x4's

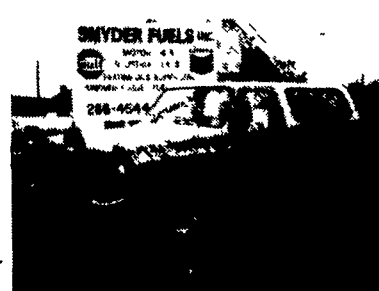
- 1989 F-350 Crew Cab DRW, V8, 469 V8, AOD, Power Equipment, Cruise & Tilt
- 1989 Ford Conversion Vans, Quad Cab, w/ Rear Seat Belts, A/C & Heat, V8, V6, 3 to 4 Cyls
- 1988 Ranger XLT Super Cab, V6, AOD, Fiberglass Cap, 1 Owner, Only 21,000 miles
- 1987 F-150 18' Stake Dump, 3.9 V6, 5 Spd, Dual Tank, Work Ready
- 1990 F-250 4x4 Super Cab, 4.9 V6, 5 Spd, 1200 Power Windows, 1000 Miles
- 1987 F-350 Crew Cab, 4.9 V6, AOD, 5 Spd, 1000 Miles
- 1990 Aerostar Conversion Van, V6, AOD, 5 Spd, Rear Seat
- 1982 F-350 Crew Cab, V8, 5 Spd, 13,000 Miles
- 1989 F-350 12' Stake Dump, 3.9 V6, 5 Spd, Only 19,900 Miles
- 1990 F-250 4x4 V8, AC, Auto Trans, Work Ready, 10,000 Miles
- 1987 Aerostar XLT, 2.9 V6, AOD, A/C, Cruise, 5 Spd
- 1989 Ranger XLT, V6, 5 Spd, 10,000 Miles, Blue & Steel
- 1988 F-Super Duty Conversion Van, Dump, 2.9 V6, 5 Spd
- 1990 Bronco XLT, V8, AC, AOD, Power Equipment, Group
- 1989 Ford Conversion Van, V8, A/C, Heat, RR, A/C & Heat

## ENGLE FORD, INC.

Rt. 147 North  
Millersburg, PA 17061  
The Calls On Us 1-800-242-8075  
1-717-692-4841



**1982 Lincoln Mark VI**  
(Last year of the big Mark) 302 EFI 1 owner, heated garage kept. Completely loaded, 98,000 miles, show room condition. **\$5,750**



**1976 Chev. K5 Blazer**  
305 V8, good tires, new exhaust system, little rust, 7 1/2' Myers power angle snowplow with plow lights, excellent condition, 97,500 Miles **\$2,750**



**1981 Ford E-350**  
Heavy Duty Van, 9000 GVW, 300 6 cyl. heavy duty auto trans., specialized shelving, roof pipe racks, new tires, some rust, excellent mechanical condition 141,000 miles **\$2,600**



**1972 Chev 2500**  
Heavy duty truck, 7000 GVW, 350 V8, with 3 speed transmission. Morysville 8' utility body, Heated garage kept, good condition, no rust, 103,000 miles. **\$1,650**

## SNYDER FUELS, INC.

155 S. 10th Street, Sunbury, PA 17801  
**717-286-4544 or 717-758-1789**

## 36 REAL ESTATE

Sale/Trade. 2BR, bath w/2BR bath apartment 2nd fl apartment 50x100 lot 24' separate garage electric heat value \$121,500 NWildwood, NJ f/farm or land (216)262-0357

SNYDER COUNTY 80 acres, 30 tillable, 2 1/2 story home, small barn, pond, \$159,900. 10 acres, ranch home, and 40x80 metal building, 6 years old, \$155,000. INTEGRITY REAL ESTATE, 717-966-3851, 717-837-1061.

Tioga County: 237 +/- acre dairy farm, large 83 tie-stall barn w/room for young stock. Pipeline, 800G bulk tank, 2 silos w/unloaders. Large 11 room, 2 bath, rm house. Would be excellent bed/breakfast locale \$250,000. Cattle and machinery also available at extra cost. (717)537-2163

VIRGINIA: 88+ rolling acres w/stream, pasture, hay meadows, scattered woods, fencing. Passive solar contemporary home (3 bedrooms, 2 baths). Panoramic views of Blue Ridge. \$279,000; or 50 acres & home for \$245,000. ANNA CRAIG REALTY, INC. (804)263-4917.

FARM FOR SALE. Southern Somerset Co., PA 183 picturesque acres, streams, near recreational areas, bank barn, 4BR Civil War house, 100 tillable acres, mineral rights, excellent road frontage, assistance w/financing. \$235,000 814-662-4029

FARMS WANTED Are you planning on buying, relocating or selling your farm or land(s)? Give the experienced people at HEYWORTH REALTY a call. We are QUALIFIED AND EXPERIENCED in farm/land sales and have all types of farms for sale. For information Call or Write. Lawrence Stouffer, HEYWORTH REALTY, 1300B Dual Highway, Hagerstown, MD 21740. 301-733-3701 Office, 717-597-2584 Eves

Farm and Restaurant and Store, Silos and equipment, Mansfield, PA, (717)693-4030

FOR LEASE Large York Co 230 cow dairy farm, 220 acres, double 10 parlor 717/259-9685

FOR SALE 7+ Acre wood lot, road frontage, level tract Red Lion, PA area, 717/244-1444

For Sale 5-10 Acres Woodland, \$2000/acre Juniata Co 717/734-3125

FRANKLIN CO, PA Near Chambersburg, 35 acre farmette, 3BR, 1880 Victorian farm home, PA bank barn, ideal for livestock. \$197,900 J.E. KELSEY REAL ESTATE 717-328-9494

GOVERNMENT HOMES from \$1 (U repair) Delinquent tax property. Repossessions. Your area (1) 805 962-8000 Ext GH-4156 for current repo list

Great Potential. Zoned highway commercial, showroom, office, plus 2 large homes for additional income. Beautiful condition Rt. 272 just North of Ephrata, \$325,000 Jack Gaughen Realtor, (717)738-4261

Hog Farm Wanted to rent/lease. We have clean, healthy herd currently in production. Prefer south central PA. Would consider elsewhere. Call after 5pm 717/633-5662.

JUNIATA COUNTY FARMETTE: Property contains 8 acres, mostly tillable w/2 story frame house, 1st floor remodeled, also has detached 2 car garage, misc shed, and older barn. Also, 10x60 trailer which is currently rented \$84,900 CENTURY 21- G&B ASSOCIATES Ask for Buzz 717-527-4127

Michigan Owner consider trade on his modern 100 cow dairy facility and also on his 170 cow operation Quest Realty 1-800-825-8589

Nice 125 acre dairy farm (Erie Co.), 110 ac tillable, nice stand of timber, 44 stanchion barn, pipeline, 20X60 silo, 60X80 machine shed, other out buildings, 5700bu bin/dryer, 2 story house. Located on blacktop 4 miles from town and schools; \$185,000. Adjacent farmland available to rent. Cattle and complete line of equipment also for sale. (814) 438-2679.

Northumberland, PA, Northumberland County. 46A farm, farmhouse, bank barn, poultry buildings, fully equipped, zoned highway commercial w/850' road frontage along Rt 147. May be divided into 2 parcels: 1-6.25A w/house, barn and 490x30 poultry building, and 1-38.25A and 450x40' poultry building, 1-40x50'; and 1-425x30'. Priced to SELL! (717)473-8257

Perry County, 140 m/l acre farm for sale by owner on Route 34. Approx. 17 miles from Carlisle 717-582-2560.

BEDFORD CO PA Near Shawnee State Park, Approx. 260 acres, renovated 3BR, 1 1/2 baths, house, mobile home and tenant house, 100x40' bank barn, 3 silos, machine sheds, 4 large cemented feed lots, river borders property Owner asking \$299,000 814-733-4363

Beautiful old country fieldstone farm house on 13.7 acres in Wallace Township Ideal for horse farm Fox & Lazo (215)286-9793

BRADFORD COUNTY 281 acre Jersey Dairy farm, 225 tillable, milks 80, very nice 5BR farm home BRADFORD COUNTY 225 acre Dairy farm, 140 tillable, milks 64, 4BR ranch style home BRADFORD COUNTY 170 acre farm set up for beef or horses, 4BR country home, \$175,000 or will sell 90 acres with all buildings \$135,000

ENDLESS MOUNTAIN REAL ESTATE 717-297-2409 Dick Berry 717-596-2935

By owner, 165+ acre farm, large house and bank barn, 2 silos, free-stall barn, machine shed much more 500+ acres mountain ground bordering State Game Lands in Southern Bedford County Owner financing (814)356-3365.

Centre Co Farm 190 acres, 165 tillable, 40 milking stanchions, pipeline, milk tank, stable/cleaner, 16x50 silo, silo/unloader, heifer free stalls. Call (814)422-8610

CLINTON COUNTY near Haneyville on Rt 664 5 acre wooded lot perked w/ underground electric adjacent public hunting Owner will finance. \$18,900 717-769-6445 Days 717-769-6035 Evenings

COUNTRY RETREAT, 145 acres, 2 acre pond house w/5BR, fireplace, satellite TV, adjacent 1600 acres PA Game Lands. Respond to P.O. Box 301, Selinsgrove, PA 17870

Combination 3000-sq.ft commercial repair shop and 160A beef feeding operation, steer barn, 20x50 silo, equipment shed, 3 steel bins, house, other buildings, \$90,000. Karlstad, MN 218-436-2219, 218-436-2980

DAIRY FARM WANTED TO RENT. Set up for 60-80 cows, tie stalls Prefer eastern or central PA 717/966-3389 after 6pm

DANVILLE 150 acre farm w/stone farmhouse, 1/2 acre pond, farm equipment included Coldwell Banker, Wandell/Sofianek Realty Inc 717/275-2090

FARM between Penn Yan and Geneva, NY, 105 acres, 65 tillable, setup for dairy, other buildings, excellent water supply, 4 bedroom house (315)789-6829 after 6pm

WANTED. Dairy farm around 150 Acres, must be set up for dairy. Write R-65, %Lancaster Farming, POB 609, Ephrata, PA 17522

WANTED TO RENT Dairy Farm, 40 to 60 Cows, From Berks through Snyder Counties. 717-345-2656

Wanted to Lease farm, farmette, good house, barn Danville area. 717-988-1978.

Washington, NJ 180 Acre Farm. Excellent for country estate, horse farm, or development. Zoned for planned industrial and residential. Principles only Call or Write W.J. McDonough, Route 94, P O Box 345, Blairstown, NJ 07825. 908-362-6565

WISCONSIN DAIRY FARMS, 30 cow to 150 cow, Up, Excellent Prices & Terms for Spring Possession. Call now! L L STEWART, Realtors, 2007 Hogeboom, Eau Claire, WI 54701, 715/834-6664

## \$\$ ALUMINUM LIVESTOCK TRAILERS ARE WORTH LOOKING INTO \$\$

An Aluminum Trailer Offers Many More Years of Dependable Maintenance-free Service than Steel Trailers.

Many Aluminum Livestock Trailers are over 20 Years Old and still in Good Condition with High Resale Value.



**We offer the Best Priced Aluminum Bumper-Pull Livestock Trailer on the Market with the Following Features:**

- \* Rubber Torsion Axles
- \* Radial Tires on White Mod Wheels
- \* Extruded Interlocking Aluminum Floor
- \* 3" Cross Members on 4" Centers
- \* 4"x4" Aluminum Rear Superstructure
- \* All Enclosed Wiring
- \* Full Swing Divider with 1/2 Walk Through
- \* Rubber Rear Bumper
- \* Full Swing Rear Gate with 1/2 Slider
- \* Recessed Rubber Mounted Rear Lights
- \* Aerodynamic 36" Radius Front
- \* 6'6" Inside Height

## Hostetler Truck Bodies & Trailers

Rt. 322 Milroy, PA 17063  
**717-667-3921**

