



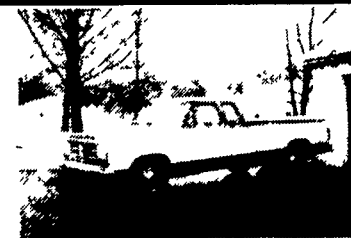
1984 Steco
32' Steel Demo Trailer
Fair Shape
\$5,800 Offer



Wilson Grain/Feed
Trailer, Hydraulic
Auger, Unload From Bottom
Or Top, With Brockway
Tractor With Wetline
\$3,200/Offer
Call (304) 876-6653
After 7:00 P.M.

- 1991 Chevy Corsica LT V6, AT,
Loaded, Black, 57,200 Mi. \$7,300
- 1991 Ford Taurus V6, AT, AC, CR,
Tilt, AM-FM Cass., Silver,
53,100 Mi. \$8,400
- 1990 Toyota Camry DX 4 Cyl., 5 Spd.,
Loaded, Black, 59,800 Mi. \$8,400
- 1989 Dodge Dynasty 4 Cyl., AT, AC,
CR, Tilt, PDL, AM-FM, White,
60,900 Mi. \$5,900
- 1989 Ford Tempo GL 4 Cyl., AT, AC,
AM-FM, Blue, 43,700 Mi. \$5,400
- 1989 Ford Crown Victoria Ltd., V8,
AT, AC, CR, Tilt, AM-FM Blue,
54,500 Mi. \$7,900
- 1988 Olds Cutlass Supreme
International Series V6, 5 Spd.,
Loaded, Red, 44,400 Mi. \$8,800
- 1988 Chevy Cavalier 4 Dr., 4 Cyl.,
AT, AC, AM-FM, White,
67,000 Mi. \$3,900
- 1988 Ford Thunderbird Turbo Coupe
AT, Loaded, Black,
53,600 Mi. \$6,800
- 1988 Ford Aerostar XLT 7 Pass., V6
AT, AC, CR, Tilt, AM-FM Cass.,
Blue/Silver, 57,200 Mi. \$7,800
- 1988 Chrysler Conquest TSI, 4 Cyl.,
AT, Loaded, Black,
40,600 Mi. \$5,800

Brubaker's Auto Sales
Myerstown, PA
717-866-5237



1990 Dodge 250 1/2 Ton Club Cab,
318 EFI, Auto, PS, PB, Air, AM-FM,
7400 GVW, Michelin Radials,
11,000 Miles, Red & White, Like
New.

\$11,900



1988 Ford F150 Super Cab, 300
EFI, 5 Speed, PS, PB, AM-FM Dual
Tanks, 6250 GVW 45,000 Miles,
Dark Blue

\$8,350



88 Chevy K30 4x4 Dually, 350 FI,
Auto, PS, PB, Air, AM-FM Lock-
Out Hubs, 54,000 Miles, 1 Owner,
White

\$10,500



1987 GMC 2500 1/2 Ton 4x4, 350 FI,
4-Speed, PS, PB, AM-FM Cass.,
Lock Out Hubs, 6800 GVW, 42,000
MI., 1 Owner

\$8,600

A&J Auto Sales

798 E. Main St., Rt. 322 East, Ephrata, PA 17522
717-733-2873

1979 GMC
Tandem with
26' Heavy Duty Jerdan
Roll Back With New
427 Gas Engine, 13
Speed Road Ranger -
New Air Brakes All
Around New Clutch,
All 10 Tires Are
85% or Better - Must
Sell
Asking...\$11,900
or Best Offer
Barmann's Equip.
State Hill, N.Y.
914-355-6875

Bittner
Boys, Inc.
Quality Chevy V8
Motors for Cars,
Trucks and Boats.
We Install And
Deliver.
35 Years Of
Experience
717/762-7940

E-TOWN
DODGE

- 1991 Jeep
Cherokee
Briarwood,
Like New
- 1989 Dodge W150
4x4 Short Bed,
Like New
- 1989 Chevy
C-1500, 27,000
Miles
- 1992 B-350 Maxi
Wagon, 15
Passenger,
20,000 Miles
- NEW 1993 Dodge
W-250 Club
Cab Diesel In
Stock
- (6) 1993 Diesels
In Stock Club
Cab & Regular
Cab

CALL
MILTON HESS
717-367-6644
717-653-6667
Elizabethtown, PA

JONES

PONTIAC • HONDA
GMC TRUCK
1335 Manheim Pike, Lancaster
394-0711

JONES BEST BUY USED TRUCKS



'87 CHEVY
S-10 PICKUP
V6, AT, AC, Tahoe,
#7237
Was \$8,995
NOW **\$6,850**



'86 CHEVY
4x4 PICKUP
Silverado, AT, AC,
Lift Kit #7281
Was \$8,995
NOW **\$6,450**



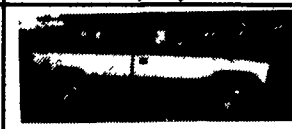
'91 CHEVY 4x4
PICKUP
Silverado, 350, AT, AC, #7287
Was \$17,900
NOW **\$15,350**



DIESEL
'89 GMC
CONVERSION
Choo Choo Custom, AT
AC, TV, VCR, Almost New
Was \$18,995
NOW **\$14,700**



'91 CHEVY
S-10 BLAZER
4 Dr., Tahoe, 4.3L V6,
AC #7305
Was \$17,995
NOW **\$16,500**



'89 CHEVY
SILVERADO
350, AT, AC, Trailer, Pkg.,
Low Mi., #7304
Was \$12,995
NOW **\$10,700**



'81 JEEP
J-10 4x4
AT, V8, Runs Great,
#7241
Was \$4,295
NOW **\$2,350**



DIESEL
'84 CHEVY
SUBURBAN
AT, 9 Pass., Front & Rear
Air, #7296
Was \$6,995
NOW **\$5,750**



'89 FORD
AEROSTAR XL
V6, AT, AC, 7 Pass.,
#7266
Was \$10,995
NOW **\$8,850**



'85 CHEVY
4x4 PICKUP
Silverado, Short Bed,
V8, AT, AC, Loaded,
#7228
Was \$8,495
NOW **\$6,900**



'92 GMC 1 TON
EXTENDED
CARGO VAN
350, AT, AC, PL, Cruise,
Tilt, #7206
Was \$19,300
NOW **\$13,900**



'88 CHEVY
ASTRO
V6, AT, AC, 8 Pass. #7307
Was \$10,995
WAS **\$8,750**



'93 GMC
CREW CAB 4x4
454, AT, AC, Dual
Wheels, Trailer Pkg.
#1415
Was \$29,374
NOW **\$27,844**



**'83 FORD CARGO/
CONV. VAN**
V8, AT, AC #7293
Was \$3,995
NOW **\$2,450**



'85 FORD
F-150
V6, 5 Spd., Great
Work Truck, #7240
Was \$4,995
NOW **\$3,500**



'89 FORD
F-150 4x4
XLT Lariat, V6, AT,
AC #7306
Was \$10,995
NOW **\$8,750**



'92 GMC
SAFARI SLX
V-6, AT, AC, 8 Pass.,
Factory Vehicle, #7261
Was \$15,995
NOW **\$12,150**



'89 CHEVY
4x4 PICKUP
Short Bed, 350, AT, AC,
Southern Coach Conv. #7265
Was \$15,495
NOW **\$13,350**



'89 FORD
RANGER 4x4
STX, V6, AT, AC, 38,000 MI.,
Lift Kit #7297
Was \$11,995
NOW **\$10,700**



DIESEL
'92 GMC EXT. CAB
AT, AC, All The Bells &
Whistles #7301
Was \$19,900
NOW **\$18,100**

Prices based on straight sale. Tax & tags extra.