

# Lancaster Co. Livestock Market Auctions

## Lancaster Livestock Auction

Lancaster, Pa.  
Monday, January 18, 1993  
Cattle Calves Hogs Sheep Goats

Monday's Auction	945	96	227	1087	407
Last Monday's Auction	900	65	101	640	435
Last Year's Auction	1006	73	113	1327	326

**CATTLE:** Slaughter steers steady, instances 50 lower on Select and low Choice; slaughter heifers fully steady; cows fully steady; bullocks not tested; bulls firm to 1.00 higher. Supply included 50% slaughter steers, 19% slaughter heifers, 24% cows, and 7% bulls.

**SLAUGHTER STEERS:** High Choice and Prime 2-3 few 4 1175-1450 lb 79.50-80.85; couple Choice 2 1100-1350 lb 80.50-82.25; Choice 2-3 few 4 1100-1400 lb 77.50-80.00; Select and low Choice 2-3 1100-1450 lb 73.50-78.00, few 1585-1650 lb 74.50-77.00.

**HOLSTEINS:** Choice 2-3 1350-1600 lb 66.50-68.00; High Choice and Prime 2-3 1280-1550 lb 68.00-71.00; Select 1-3 1175-1400 lb 63.00-65.50.

**SLAUGHTER HEIFERS:** Choice 2-3 975-1300 lb 74.50-78.75; few Choice 2 1065-1285 lb 78.50-79.50, with three head 1300-1470 lb 81.25; few Choice 2-3 900-950 lb 71.00-75.00; Select 2-3 950-1200 lb 70.00-74.00; Select and Choice 1-3 1100-1600 lb Holsteins 61.75-66.00.

**COWS:** LO DRESSING BULK HI DRESSING Breaking Utility & Commercial 2-3 48.50-51.50 51.50-53.00 Commercial 3-4 43.50-48.50 Cutter & Boning Utility 1-2 46.75-51.00 51.00-52.50 Canner and low Cutter 38.00-43.00 43.00-47.00.

**BULLS:** Yield grade 1 1300-2000 lb, with 14 head 2000-2415 lb 62.00-67.00, couple 69.25-72.00, and two head 76.00-78.00; Yield grade 2 1050-1550 lb 58.75-61.75.

**CALVES:** Vealers steady, instances 5.00 higher; slaughter calves steady. Demand good for Holstein bulls to return to farm.

**VEALERS:** Few Good and Choice 200-325 lb 90.00-105.00; high Good and low Choice 80-110 lb 50.00-65.00.

**SLAUGHTER CALVES:** Choice 275-400 lb 75.00-90.00; Good 250-550 lb 60.00-75.00.

**RETURNED TO FARM:** Bulk 90-125 lb Holstein bulls 150.00-180.00; small frame 85-115 lb 110.00-145.00.

**HOGS:** Barrows and gilts 1.00-2.00 higher; sows 2.00 higher.

**BARROWS AND GILTS:** US 1-2 210-245 lb 43.00-44.10. US 1 215-240 lb 44.50-45.00.

**SOWS:** US 1-3 300-500 lb 32.00-35.00. 500-650 lb 34.50-37.25.

**BOARS:** All Weights 30.00-32.00.

**SHEEP:** Slaughter lambs fully steady; slaughter ewes steady. Supply included 55% woolled lambs, 15% new crop lambs, with balance slaughter ewes.

**WOOLED LAMBS:** Choice 2-3 60-90 lb 80.00-95.00, Good to low Choice 1-3 90-110 lb 70.00-75.00.

## Vintage Livestock Auction

Paradise, Pa.  
Tuesday, January 19, 1993  
Report Supplied by USDA  
Cattle Calves Sheep Goats

Today	719	862	10	0
Last Tuesday	836	877	9	2
Last Year	653	858	3	0

**CATTLE:** USDA... Supply included 33% slaughter steers and 57% cows ... Compared with Monday's market: sl steers fully steady; sl heifers, bullocks and bulls not fully tested; cows fully steady. **SL STEERS:** Choice 2-3 few 4 1100/1450 lbs 77.75-80.50, few 1450/1650 lbs 73.50-78.00, Choice and Prime 2-3 1150/1450 lbs 80.00-82.00, 15 head 82.25-83.50, Select and Low Choice 2-3 1075/1450 lbs 73.50-78.00, few 78.00-78.50, Select 1-3 1050/1375 lbs 71.00-74.00. **HOLSTEINS:** Choice 2-3 1300/1650 lbs 66.75-68.85, High Choice and Prime 2-3 1300/1565 lbs 68.50-70.75, Select 1-3 1250/1400 lbs 62.00-66.00. **HEIFERS:** couple Choice 2-3 1075/1250 lbs 72.75-75.50. **COWS:** Breaking Utility and Commercial 2-3 bulk 48.00-51.25, high dressing 51.50-54.00; Commercial 3-4 bulk 45.00-48.00; Cutter and Boning Utility 1-2 bulk 46.50-50.50, high dressing 50.50-52.50; Canner and Low Cutter low dressing 39.50-44.00, bulk 44.00-47.00. **BULLS:** couple Yield Grade No. 1 1450/1725 lbs 61.00-64.00, No. 2 1300/2150 lbs 54.75-64.00.

**CALVES:** Small supply vealers steady. Supply included 708 in graded sale of which 93% sold to return to farm. **VEALERS:** High Good and Low Choice 80/105 lbs 50.00-60.00, Standard and Low Good 65/90 lbs 25.00-46.00, one lot 60 lbs 17.00. **RETURNED TO FARM:** 35 head Holstein bulls 120/125 lbs 175.00, 260 head 95/115 lbs 178.00-186.00, and 75 head 80/95 lbs 134.00-155.00, 25 head small frame 110/115 lbs 135.00, 45 head 100/105 lbs 143.00-149.00, 75 head 90/95 lbs 125.00-130.00, and 45 head 80/85 lbs 112.00-117.00. 20 head Holstein heifers 100/120 lbs 201.00-203.00, 35 head 90/95 lbs 175.00 and 20 head 80/85 lbs 140.00, 10 head small frame 80/110 lbs 157.00, and 35 head 70/85 lbs 97.00-100.00.

**SHEEP:** No market test.

**GOATS:** No market test.

**NEW CROP LAMBS:** Choice 2-3 80-105 lb 80.00-95.00, few 30-50 lb 100.00-130.00.

**SHORN LAMBS:** Choice 2-3 90-110 lb with #1 pelts 75.00-85.00.

**SLAUGHTER EWES:** Utility and Good 30.00-50.00, few 50.00-60.00, Yearlings and two-year olds 40.00-65.00, few 65.00-70.00.

**GOATS:** All goats sold by the head. Large 100.00-150.00, Thin 60.00-100.00 Medium 50.00-60.00, Thin 40.00-50.00 Small, mainly kids, 30.00-40.00; Thin 20.00-30.00.

## Lancaster Livestock Auction

Wednesday's market report has been discontinued until further notice because of insubstantial receipts.

## Leesport Livestock Auction

Leesport, Pa.  
Wednesday, January 20, 1993  
Report Supplied by PDA

**CATTLE:** 312..PDA Supply included 152 sl. steers and sl heifers. Compared with last Wednesday's market. Sl steers uneven steady to weak; sl heifers 2.00 to 3.00 lower; Holstein mostly 1.00 lower; sl cows steady to .50 lower. **STEERS:** Choice 1050/1600 lbs. 74.50-81.00, Select 67.00-74.00. **HOLSTEINS:** Choice 68.50-73.75, one 77.25, Select 63.00-67.50, few Standard 60.00-63.50. **HEIFERS:** Choice 71.00-79.00 mostly 73.00-77.75, few Select 65.00-68.00. **COWS:** Breaking Utility and Commercial 48.50-53.25, couple 55.00, Cutter and Boning Utility 48.50-53.25, couple 55.00, Canner & low Cutter 43.50-47.75. Shells down to 35.00. **BULLOCKS:** few Choice 65.00-66.75, few Select 63.25-64.25. **BULLS:** Yield Grade No. 1, 1150/1900 lbs. 58.00-63.75, few No. 2 800/1300 lbs. 54.00-55.50. **FEEDER CATTLE:** Lot Large No. 1 675/975 lbs. 64.00-69.25.

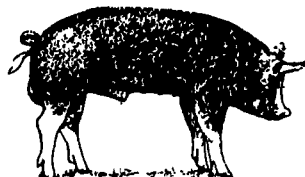
**CALVES:** 157... **VEALERS:** few Good 90.00-105.00, few Standard and Good 75.00-80.00, few Utility 50/80 lbs. 40.00-80.00. **RETURNED TO FARM:** No. 1 Holstein Bulls 90/130 lbs. 150.00-200.00, No. 2 80/120 lbs. 60.00-125.00, No. 1 Holstein heifers 80/115 lbs. 150.00-207.50, few No. 2 75/95 lbs 75.00-110.00. Beef cross 70/130 lbs. bulls and heifers 60.00-197.50.

**HOGS:** 221..Barrows and gilts .75 to 1.75 higher. **BARROWS AND GILTS:** US No. 1-2 230/255 lbs. 42.85-43.75, two head 44.00, 1-3 235/265 lbs. 41.00-42.75, lot 2-3 305 lbs. 39.75, lot 1-3 205 lbs. 39.00. **SOWS:** 1.00 lower. **US No. 1-3 300/540 lbs. 31.25-34.75. BOARS:** few 29.00-30.50, few lightweights 31.00-34.00.

**FEEDER PIGS:** 137...US No. 1-3 20/35 lbs. 82.50-117.50, few Utility 55/85 lbs. 35.00-44.00 --per cwt.

**SHEEP:** 40...WOOLED SLAUGHTER LAMBS: Choice 80/110 lbs. 63.00-79.00, few 40/60 lbs. New Crop Lambs 100.00-125.00. Slaughter sheep: 20.00-27.00.

**GOATS:** 18...few Large 50.00-82.00, few Medium 37.50-50.00. --- all per head.



## New Holland Livestock Auction

Lancaster, Pa.  
Thursday, January 21, 1993  
Cattle Calves Sheep Goats

Today	984	518	142	67
Last Thursday	1058	569	209	92
Last Year	950	649	120	96

**CATTLE:** Slaughter steers uneven, Average Choice to Prime mostly steady, Select to low Choice steady to weak; slaughter heifers fully steady; cows 1.00-2.00 higher; bullocks and bulls steady. Supply included an 39% slaughter steers, 8% slaughter heifers, 40% cows, 3% bulls, with balance feeders.

**SLAUGHTER STEERS:** Choice 2-3 few 4 1080-1450 lb 78.00-80.50, few 80.50-80.85; small supply High Choice and Prime mostly 3 1250-1435 lb 81.25-82.35; few Choice 2 1150-1325 lb 80.50-82.00; Select and low Choice 2-3 1050-1525 lb 73.50-77.50, few 77.50-78.25.

**HOLSTEINS:** Choice 2-3 1140-1650 lb 66.50-68.50; few High Choice and Prime 2-3 1250-1660 lb 68.85-71.00; Select 1-3 1225-1500 lb 63.00-66.00.

**SLAUGHTER HEIFERS:** Choice 2-4 900-1250 lb 72.00-75.25; few Choice 2 1125-1275 lb 76.00-77.75; Select 2-3 950-1200 lb 68.00-71.00; few Choice 2-3 1100-1550 lb Holsteins 58.75-60.00.

**COWS:** LOW DRESSING BULK HIGH DRESSING Breaking Utility & Commercial 2-3 48.00-52.00 52.00-55.00. Commercial 3-4 46.00-48.50. Cutter & Boning Utility 1-2 45.00-48.50 48.50-52.00 52.00-55.25. Canner and low Cutter 41.00-44.50 44.50-48.00.

**BULLOCKS:** Choice 2-3 1175-1375 lb 66.50-69.00; Select 1-3 1075-1300 lb 63.25-65.50.

**BULLS:** Yield grade 1 1350-2160 lb 61.50-64.75, individual 2730 lb 65.50; Yield grade 2 1200-1850 lb 59.50-61.00. **CALVES:** Vealers steady. Demand good for Holstein bulls and heifers to return to farm.

**VEALERS:** Few Choice 175-305 lb 90.00-105.00; high Good and low Choice 160-350 lb 64.00-85.00, 80-110 lb 40.00-52.00; Standard and low Good 60-80 lb 35.00-45.00.

**RETURNED TO FARM:** Bulk 90-125 lb Holstein Bulls 150.00-190.00, several mainly early 192.00-202.00; small frame 95-120 lb 115.00-150.00, 80-90 lb 90.00-120.00; bulk 90-120 lb Holstein Heifers 145.00-185.00, few 195.00-218.00; small frame 90-115 lb 100.00-140.00.

**SHEEP:** Slaughter lambs and slaughter ewes steady. Supply included 60% woolled lambs, 20% New Crop Lambs, with the balance slaughter ewes.

**WOOLED LAMBS:** Choice 2-3 80-100 lb 72.00-80.00, 50-75 lb 83.00-95.00.

**NEW CROP LAMBS:** Choice 30-50 lb 130.00-155.00, eight head 170.00-195.00; 50-65 lb 100.00-130.00.

**SLAUGHTER EWES:** Utility and Good 28.00-43.00; Yearlings and two-year-olds 43.00-62.00.

**GOATS:** All goats sold by the head; Large 78.00-99.00, few 107.00-112.00, with four head 129.00-145.00, Medium 54.00-68.00; Small, mainly kids, 37.00-46.00.

## Jersey Shore Livestock Market, Inc.

Auction every Thursday at 4:00 p.m.

Jersey Shore, Pa.

Report supplied by Auction

Thursday, Jan. 21, 1993

RETURN TO FARM CALF 110.00-188.00.

## Lancaster County Weekly

Lancaster, Pa.  
Friday, January 22, 1993  
Cattle Calves

This Week	2900	1470
Last Week	2930	1511
Last Year	2906	1580

**CATTLE:** Slaughter steers uneven, Average Choice to Prime mostly steady, Select to low Choice weak to 50 lower, slaughter heifer fully steady; cows steady early, closing 1.00-2.00 higher; bullocks not fully tested; bulls firm to 1.00 higher. Supply included 38% slaughter steers, 10% slaughter heifers, 36% cows, 4% bulls, with the balance feeders.

**SLAUGHTER STEERS:** Choice 2-3 few 4 1080-1450 lb 77.75-80.50, few 80.50-80.85; High Choice and Prime 2-4 1175-1435 lb 79.50-82.35; few Choice 2 1150-1400 lb 82.25-83.50; few Choice 3-4 1450-1650 lb 73.50-78.00; Select and low Choice 2-3 1050-1525 lb 73.50-78.00, few 78.00-78.50; Select 1-3 1050-1375 lb 71.00-74.00.

**HOLSTEINS:** Choice 2-3 1140-1650 lb 66.50-68.85; High Choice and Prime 2-3 1250-1660 lb 68.00-71.00; Select 1-3 1175-1500 lb 62.00-66.00.

**SLAUGHTER HEIFERS:** Choice 2-3 975-1300 lb 74.50-78.75; few Choice 2 1065-1285 lb 78.50-79.50; Choice 2-3 900-975 lb 71.00-75.00; Select 2-3 950-1200 lb 68.00-74.00; Select and Choice 1-3 1100-1600 lb Holsteins 60.00-66.00.

**COWS:** LOW DRESSING BULK HIGH DRESSING Breaking Utility & Commercial 2-3 48.00-52.00 52.00-55.00. Commercial 3-4 43.50-48.50. Cutter & Boning Utility 1-2 45.00-48.00 48.00-52.00 52.00-55.25. Canner and low Cutter 39.00-44.00 44.00-48.00.

**BULLOCKS:** Few Choice 2-3 1175-1375 lb 66.50-69.00; few Select 1-3 1075-1300 lb 63.25-65.50.

**BULLS:** Yield grade 1 1300-2415 lb 61.50-67.00, couple 67.00-72.00; Yield grade 2 1050-1850 lb 58.75-61.75.

**CALVES:** Small supply vealers steady, slaughter calves steady. Demand good for Holstein bulls and heifers to return to farm. **VEALERS:** Few Choice 175-305 lb 90.00-105.00; high Good and low Choice 160-350 lb 64.00-85.00, 80-110 lb 40.00-52.00, few 52.00-60.00; Standard and low Good 60-90 lb 25.00-46.00.

**SLAUGHTER CALVES:** Choice 275-400 lb 75.00-90.00, Good 250-550 lb 60.00-75.00.

**RETURNED TO FARM:** Bulk 90-125 lb Holstein bulls 150.00-186.00, few 190.00-202.00, 80-90 lb 134.00-155.00, small frame 95-120 lb 115.00-150.00, 80-90 lb 90.00-120.00. Bulk 90-120 lb Holstein heifers 145.00-203.00, couple 205.00-218.00; small frame 90-115 lb 110.00-157.00, with 70-85 lb 97.00-100.00.

**GOOD VEAL:** 100.00-130.00  
**COMMON VEAL:** 30.00-90.00.  
**CHOICE STEERS:** 74.00-80.50.  
**SELECT STEERS:** 59.00-73.00.  
**COMMON STEERS:** 53.00-59.00.  
**COMMERCIAL COWS:** 47.00-54.50.  
**CANNERS-CUTTERS:** 43.00-52.50  
**SHELLS:** 36.00-43.00.  
**CHOICE HEIFERS:** 69.00-77.50.  
**SELECT HEIFERS:** 55.00-73.00.  
**COMMON HEIFERS:** 52.00-59.00.  
**GOOD FEEDERS:** 60.00-83.50.  
**COMMON FEEDERS:** 50.00-56.00.  
**BULLS:** 52.25-66.25.  
**GOOD HOGS:** 40.00-41.50.



## B&R CATTLE CO.

RD 1, Marietta, PA  
17547  
Office Phone:  
(717) 653-8164

Specializing in  
Stockers &  
Feeders

## JOHN BOWMAN

Ph. (717) 653-5728  
**RON RANCK**  
Ph. (717) 656-9849

## LEBANON VALLEY LIVESTOCK MARKET, INC.

1 mile East of  
Fredericksburg  
along Rt. 22

**PHONE**  
**JONESTOWN**  
**865-2881**

Flea Market Auction  
every Tuesday at 12:30,  
Tools, Eggs, Produce,  
etc.

Buyers & Sellers  
Welcome



Open 24 hours a day

365 days a year

(717) 394-2611

## AUCTIONS

### MONDAY

9:00 A.M. - Slaughter Bulls, Heifers, Steers, Cows  
10:00 A.M. - Goats, Veal Calves, Lambs  
12:00 Noon - Slaughter Hogs

### WEDNESDAY

8:00 A.M. - Slaughter Hogs  
10:00 A.M. - Slaughter Bulls, Heifers, Steers, Cows  
11:00 A.M. - Veal Calves, Lambs

### FRIDAY

11:00 A.M. - Stocker and Feeder Cattle

### SATURDAY

8:00 A.M. - Slaughter Hogs

**Next Feeder Cattle Sale**  
**Friday, Jan. 29 - 11:00 A.M.**

## LANCASTER STOCKYARDS, INC.

1147 Litz Pike, Lancaster, PA 17601

Incorporated in 1895 - Serving The Community for 98 Years

## HAY, STRAW & CORN

### — SALE —

Please Note New Sale Time!  
Starting Jan. 3  
Sale Starts 10 AM  
Every Friday At 10 AM



## GREEN DRAGON MARKET & AUCTION

RD No. 4 Ephrata, Pa. 717-738-1117  
1 mile North of Ephrata on N. State St.  
Out of State Buyers - Cash or Certified Check Only

## VINTAGE SALES STABLES, INC.