

1a CONSTRUCTION EQUIPMENT

MF forklift, tractor type, new tires, rebuilt motor, forks spread apart 5 1/2' w/ hydraulic cylinders, needs minor repairs. \$7500 invested, will sell \$5500. 717-225-3798; 717-873-9928.

Four 1300x20 TG Goodyear tires, new, never used. 717-456-6060.

WANT TO BUY all makes and models of construction equipment. (301) 694-6148; (301) 371-9299 fax.

WANT TO BUY: all makes and models of construction equipment. (609) 691-0526; (609) 696-5816 fax.

WELDER: 600 AMP slugger, Hobart V8, \$1800. 215-766-7694.

Model 4500 Ford Diesel Loader Hoe w/Cab, Needs Steering Ting Pins. \$4500. 609-894-2849.

Model 55 Michigan Loader, Detroit Diesel, 4 Cylinder Needs Some Work. \$3500. 609-894-2849.



JD 350-B Crawler Loader
4 In 1 Bucket, New Rollers, Very Good Condition
\$8500
717-374-5486

- 1986 Morbark - Eager Beaver Chipper "Self-Feeder"
- Ford Gas Engine - \$8500
- 1986 T5 Terramite Mini Backhoe 18 Hp Gas Engine \$6,500
- 1974 Mack RD S/A Dump Truck, Diesel Engine \$6,995
- 1974 Case 580 B X-Tenda Hoe w/ Hydraulic Post Hole Digger \$9,250
- 1987 Grimmer Schmit Air Compressor 105 CFM Tow Type \$3,995 (Like New, Low Hours)
- Ford - Lane Tow Type Paver \$1,995
- Eager Beaver SR150 1 1/2 Ton Roller Hydrastat \$2,995

Mark Supply
Saxton, PA
(814) 658-3066

Lee Dull Equipment Co.

Backhoes

- Case 580 CK gas \$6,000
- Ford 550 cab \$10,500
- JD 310A \$10,500

Crawlers

- JD 555 ROPS \$16,000
- Case 350 w/Hoe \$9,500
- JD 350B ROPS \$8,500
- JD 350B \$8,500
- JD 450 B ROPS \$10,500
- Case 450 \$8,500
- Cat D-3, 6-way, new motor... \$13,500
- iH D-6 Dozer \$2,500
- Case W14 payldr, new motor \$10,500

(717) 949-2270

2 FARM EQUIPMENT WANTED

12-15 Ton Scissors Hoist \$410-452-8643.

Good Skid Loader wanted, Case 1840 or Mustang 940. Call 702/234-9348 evenings

WANT: Athens 131, 9'6" disc harrow. (717) 872-5178.

2 FARM EQUIPMENT WANTED

WANTED: 14' cultipacker, 4" large axle, transport optional. Lancaster Co. 717-665-7399.

WANTED: 36' hay elevator, good condition. 717-749-5751.

WANTED: 995 Case, less than 1500 hours. Call 717-369-2477.

WANTED: Litter pans for NH spreaders: 519, 520, 679, 680. 717-949-3074 or 703-879-9926

WANTED:

USED FORD & KUBOTA TRACTORS

Call 717-949-6501 Daytime

WENGER'S, INC.

251 South Race St., Myerstown, PA 17067

717-866-2130

HOURS: Mon.-Fri. 7:30 to 5:00; Sat. 7:30 To Noon

NIGHTS, PHONE:

717-866-7147

717-273-9089

FAX

717-866-4300



Portable Ramp, 9'6" Wide, 36' Long, 25,000 Lb. Capacity, Good Condition, Dolly Wheels, New Cost \$16,000.
\$6,990



1985 Honda Accord LX, 5 Speed, PS, PB, Air, AM-FM Cassette, Current Inspection, Charcoal Gray, 114K Miles, Dependable.
\$3,900



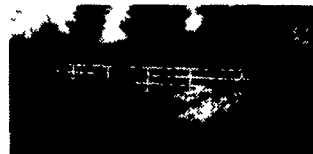
1981 Ford 5600 4x4 With Loader, PTO Pump, Good Tires, Dual Power, Very Nice Unit, Well Above Average.
\$14,500



1980 JD 544B Rubber Tired Loader, Cab, Runs Good.
\$25,500



1979 General 3 Axle Tag-A-Long Trailer, 24,000 GVW, 15' Flat Ramps, 3' Beavertail.
\$1,999



25 Ton Hyster Lowboy, Will Take Tandem Tractor, 8.25x15 Tires, Beavertail, Good Condition.
\$4,900



Transport 35 Ton Detachable Trailer, Pony Motor, 15" Tires, Good Condition, Non-Ground Bearing.
\$9,900



1992 New 5 Ton Tag-A-Long, All Wheel Brakes, Adjustable Hitch, Adjustable Ramps, 16' Bed, Or 18' Bed Available.
\$1,995

(12) CRAWLER LOADERS

- JD 440 Diesel - 1960? \$3,500
- Case 350 - 1971 - Diesel..... \$6,900
- JD 350 Diesel - ROPS - 1969..... \$7,500
- JD 450B - ROPS - 1972..... \$9,900
- Cat 977K - ROPS - 1970..... \$11,500
- JD 350C - With Hoe - 1977..... \$12,500
- Cat 941B - 1974 - 4 In 1 - ROPS..... \$16,500
- Fiat FL9 - ROPS - 1979..... \$17,500
- Case 1150C - ROPS - 1981..... \$19,500
- Case 455C - ROPS - 1986..... \$22,500
- Case 1155D - 4NI - 1983..... \$26,500
- CAT 983 - Cab - 1969..... \$35,000

(6) BACKHOES

- (9) Hoe Attachments..... From \$2,000
- Ford 515 Diesel - 1975..... \$8,900
- IH 260A - Diesel - 1979..... \$8,900
- IH 270A - 1979 - Diesel..... \$9,900
- JD 310A - ROPS - 1977..... \$12,500
- Dynahoe 200B - 4x4 - Big..... \$15,000
- JD 710B - EROPS - 1985..... \$27,500

(3) TRUCKS/CARS

- 1982 Yamaha 650 Maxim Cycle..... \$1,500
- 1985 Honda Accord LX - 4 Dr..... \$3,900
- 1989 Acura Legend L Sedan..... \$15,900

(3) TRACTORS WITH LOADERS

- Kubota L345 - 4x4 - 3 Pt. - PTO \$5,500
- Versatile 150 - 4x4 - 3 Pt. - PTO - 1977 \$8,500
- Ford 5600 - 4x4 - 3 Pt. - PTO - 1981 \$14,500

MISCELLANEOUS CONSTRUCTION

- (50) New & Used Hoe Buckets..... COME SEE
- (50) Loader Buckets..... COME SEE
- (50) Set Forklift Forks..... COME SEE
- (2) Tree Planter..... Each \$795
- Giant Leaf Vacuum..... \$900
- Ripper For Crawler..... \$1,000
- Root Rake - 7'..... \$1,200
- Sweeper - Pull Type - Gas..... \$2,000
- Schramm 160 Air Comp..... \$3,000
- Large Snowblower For Loader..... \$3,000
- Vermeer Stump Grinder..... \$3,500
- IH 140 w/Power Broom- 1972..... \$3,900
- (7) Sheeps Foot 2 Drum Roller..... \$2,500/\$4,500
- JD 5010 Scraper..... \$4,900
- IR 175 Compressor - Diesel - 1982..... \$4,900
- IR 175 Compressor - Diesel - 1983..... \$5,900
- Construction Ramp, 36' Long..... \$6,900
- Huber 1500 Grader - Diesel..... \$7,900
- JD 760 Scraper..... \$9,900
- Insley H1000 Excavator- 1974..... \$13,500
- Galion V05-84A Vib. Roller- 84"..... \$19,500
- Bucyrus Erie 45C Truck Crane..... CALL

(6) RUBBER TIRE LOADERS

- Hough 90 Diesel - 1959 - 2.5 Yd..... \$2,900
- Versatile 150 - Cab - 1977 - 1.25 Yd. \$8,500
- Prime Mover LD50 - 1983 - 1 Yd..... \$9,500
- Fiat 940 - Cab - 1976 - 1.75 Yd. \$13,500
- Michigan 45C - 1979 - Cab - 1.75 Yd - Bkt. & Forks..... \$21,500
- JD 544B - Cab - 1980 - 2 Yd..... \$25,500

(2) LOG SKIDDERS

- JD 440A - Diesel - 1970 \$8,900
- JD 440C - Diesel - 1980..... \$22,500

(9) DOZERS

- IH TD5 - Winch - No Blade \$2,500
- JD 420 - Gas - 1958..... \$2,900
- JD 350B - Diesel - 6 Way - ROPS..... \$8,500
- JD 350C-6 Way - 1984..... \$12,500
- Case 350B - ROPS - 6 Way- 1980..... \$12,500
- JD 450B - 6 Way - ROPS - 1973..... \$12,500
- IH TD7E - 6 Way - 1984..... \$17,500
- Komatsu D65E - ROPS - 1976..... \$19,500
- Case 850C - ROPS - 6 Way - 1981.. \$22,500

(21) TRAILERS

- 1991 5 Ton - Tag-A-Long - 6x16 \$1,750
- (2) 1992 5 Ton Tag-A-Long - 6x16..... \$1,995
- 1979 3 Axle Tag-A-Long - 12 Ton - 8x18..... \$1,999
- (3) 1993 5 Ton Tag-A-Long - 6x18..... \$2,195
- 1977 2 Axle 7 Ton Tag-A-Long - 8x18..... \$2,400
- 1978 3 Axle 11 Ton Tag-A-Long - 8x18..... \$2,700
- 2 Axle 12 Ton Tag-A-Long - 8x21..... \$2,900
- 18 Ton Tag-A-Long - 8x17..... \$2,900
- 1993 5 Ton Tag-A-Long - 8x18..... \$3,250
- 13 Ton 3 Axle Tag-A-Long - 8x20..... \$3,400
- 1984 11 Ton Tag-A-Long - 8x20..... \$3,500
- Rogers 35 Ton Lowboy - 8x27..... \$3,900
- 1987 10 Ton Tag-A-Long - 8x23..... \$4,200
- 1968 40 Ton Lo-Boy - 8x27..... \$4,900
- Hyster 25 Ton LowBoy - 8x27..... \$4,900
- 1992 9 Ton Tag-A-Long - 8x24..... \$5,850
- 1992 10 Ton Tag-A-Long - 8x24..... \$6,450
- 1973 Transport 35 Ton Detachable - 8x30..... \$9,900

FORKLIFT

TCM 3000 Lb. - Gas - Air Tires ... \$6,900

SKID LOADER

JD 90 - Gas - 1980..... \$4,500

3 SILOS AND UNLOADERS



Unloader, Parts & Service - Call: 717-776-3129

DEPENDABLE SALES & SERVICE

STAR ★ Lancaster SILOS

Patz SILO UNLOADERS

Patz GUTTER CLEANERS

RISSLER TMR MIXERS



POWERED FEED CARTS



Cedar Crest Equipment

Two Convenient Locations

608 Evergreen Rd. Lebanon, PA 17042 (717) 270-6600

RD 2 Box 271 East Earl, PA 17519 (717) 354-0584

WE CUSTOM DESIGN SYSTEMS FOR YOU

Zimmerman's Farm Service

We Can Supply You With Gates, Head Locks, Free Stalls, Comfort Stalls, etc...

MFG. By



and...

TMR MIXERS



Call For Special Fall Pricing...



ZIMMERMAN'S FARM SERVICE
Bethel, Pa.
717-933-4114