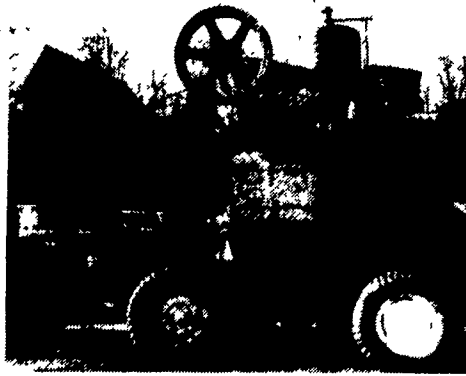


**\$ CASH \$**

Farmers and woodland owners get a return on your land investment by turning your mature trees into cash thru proper forest management. One of our foresters will meet with you and explain to you the proper way your timber should be harvested.

**JUNIATA FOREST PRODUCTS**  
POB 36, Newport, PA 17074  
717-567-7226  
717-567-3832 after 7 PM



Rex Mixer 16 C.F. Cap Gas Engine, Excel Cond.  
**\$3,500**  
(410) 337-3570 Anytime

**ATTENTION FARMERS**

If you have deteriorating concrete masonry or stone walls, have it repaired with GUNITE®

For information and estimates call **Martins Silo Repair**  
(215) 445-9834

- AC Gleaner F w/4 RN Corn Head and 13' Grain Head
  - IH 706 Diesel Tractor, Overhauled 1991
  - 2 Small Bin Wagons
  - Ontario Grain Drill
  - Sprayer
  - Int. 6 RN Corn Planter
  - IH Grinder Mixer
  - 10' Grain Auger, 4" Diameter w/Motor
- (717) 273-4276 Days**  
**(717) 838-9096**  
**After 6 PM**

**HERR & LEAMAN**

Used Farm Equipment Sales & Service  
10 miles S. of Lancaster along Rt. 222

QUALITY TRACTORS AND EQUIPMENT/REASONABLY PRICED/SERVICED & AVAILABLE WITH A 100% WARRANTY ON ENGINE AND DRIVE TRAIN DELIVERY AVAILABLE



**Tractors**

- JD 4250 SGB, power shift, 1986 model, 2085 hrs. **SOLD**
- JD 4050 power shift, SGB
- JD 4050 SGB, quad range
- JD 2950 fender tractor, hi-lo, nice
- JD 4840 SGB, Power Shift, 18-4-42" w/ Duals, Nice Tractor
- JD 4640 SGB, Quad, duals, 3600 Hrs., very nice
- 1981 JD 4440 power shift, SGB
- JD 4440 SGB, power shift
- JD 4040 quad **SGB**
- JD 4430 '77 **SOLD** SGB, Quad
- JD 4430 SGB, Quad
- JD 4230 SGB, Quad, 4000 Hrs., Very Nice
- JD 4320 w/year-a-round cab
- JD '74 model 4230, SGB, quad
- JD 4320 w/factory cab
- JD 4000 diesel w/year round cab, dual hydraulics gear drive
- JD 4020D, WF, side console, gear drive
- JD 720 D w/WF
- JD 630 gas

- Case IH 7140 Magnum, MFWD, Duals, Weights
- Case IH 5140, Maxxum, Warranty Till Sept. 1995, Fender Tractor, 2 Wheel, Power Shift
- IH 3588, 2+2, Nice Tractor
- IH 3088 fender tractor
- IH 1586 cab, air
- (2) IH 1486 factory cab, air
- IH 1086, 1981, cab, air, 4000 hrs.
- IH 1086 cab, air
- IH 986, 1981, cab, air, 1 owner, 2540 hrs., very sharp
- IH 986, 1981, cab, air, 1 owner, 2705 hrs., extra sharp
- IH 986 factory cab, air
- (2) IH 886 cab, air, very nice
- IH 86 hydro, WF, 3PT, nice
- IH 84 hydro, 1145 hrs., 1 owner
- IH 684D
- IH 1456 fender **SOLD** 20" rubber, nice
- IH 1466 red cab w/air, nice, 2600 hrs.
- IH 1066 fender tractor, nice
- IH 1066, red cab w/air, sharp
- IH 1066 white **SOLD** 900 hrs., very nice
- IH 966 w/cab & air
- IH 966 with or without cab
- IH 766, 1976, black stripe, fender tractor, 2900 hrs., very nice
- IH 826, WF, 3PT, year round cab
- IH 826 diesel, WF, 3 pt. fender tractor
- IH 756D, WF, 3PT
- IH 656D, WF, 3 pt.
- IH 656D, NF, 2 Pt.
- Farmall Cub w/sickle bar
- Case 970 fender tractor, power shift, 2565 hrs.
- MF 2675 factory cab, air, 2400 hrs.

**Heads**

- MF 1163 6RN, very good
- MF 1143 4RN corn head, good cond.
- MF 1144, 4RW
- MF 1859, 16' flex w/UII reel
- MF 1859, 15' Flex Head w/UII Reel
- IH 963 6RN
- (3) IH 843 4RN, 1 Very Good
- JD 443 Low Tin Oil Bath
- JD 443, 4RN
- JD 444 4RW **SOLD** 44 oil bath
- JD 213 flex black reel
- JD 216 flex
- JD 100 Series 13' & 15' rigid heads
- NI 711 grain head, nice

**Combines**

- 1984 JD 6620 Side Hill, 4WD
- JD 4420 air, monitors, header height
- JD 4400 1979 model, 2200 hrs., 23" tires, v. nice
- JD 4400D, air, 1974 model
- MF 850 hydro, 2WD
- MF 850D hyd. 2WD, very nice

**Used Parts**

- IH 70 hydro
- IH 806 diesel & gas
- IH 560 D
- IH 706 gas tractor
- IH dual PTO units
- IH 826 diesel
- IH 1026 hydro
- Dual wheels - 34's and 38's Tractor Weights JD & IH
- IH 544 diesel, hydro Farmall
- IH 504 utility
- IH 856 diesel
- IH 706 diesel
- IH 1256
- Farmall 400 & 450 D & gas Farmall H & M
- NI 713 & 715 grain heads
- NI 702 D & 701 G & 702 G
- NI 717 combine
- JD 4020 del., powershift
- JD 3020 G

Have Part Number Ready — We Ship U.P.S.

Box 1 New Providence, PA 17560  
**(717) 786-1606**

Mon.-Fri. 8-6, Sat. 8-12 717-786-4773 Fax Or Leave Message

1988 Model 385 Case/IH Tractor, 35 PTO hp, 3 cylinder, water-cooled diesel engine, CAT 1, 3 pt. hitch, differential lock power steering independent PTO, 1 aux. valve, 8 speeds forward, 4 reverse w/model 2526 Triumph hydro-clipper sickle bar mower, 6', 14 hours. Best offer over \$13,500  
**(717) 285-4857**

IH 886 Tractor w/cab & weights, 18x38 tires 80%, excellent condition  
Farmall 656 row crop diesel, WF  
IH Model 5100 grain drill, 16 disc  
NH 718 Harvester w/both heads  
NH Whirlfeed blower  
Rebuilt NH 36 fall chopper  
IH 450 4X plow, 3 pt., 16"  
IH 435 baler w/thrower  
Going Out Of Farming. All Good Condition From One Owner  
**814/634-5235**

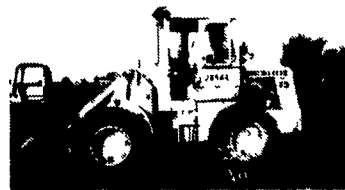
**1a CONSTRUCTION EQUIPMENT**



JD 450C Crawler Loader



1986 JD 450E 6-Way Blade



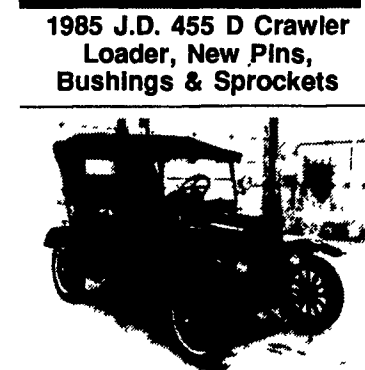
JD 544 Loader



1985 J.D. 455 D Crawler Loader, New Pins, Bushings & Sprockets



Clark Forklift, 3 Stage Tow Motor



1924 Model T In Excellent Condition, Best Offer

JD 450B Crawler Loader w/Backhoe 9 Ton 3 Axle Tagalong Trailer  
1992 Gooseneck Trailer, 24' 2 Axles, Electric Brakes

**AA Equipment**

1797 Robert Fulton Hwy.  
Quarryville, PA 17566  
**717/529-2512**

**1a CONSTRUCTION EQUIPMENT**

Heavy Equipment Loader Parts, Inc.  
717-469-0691  
717-469-0039  
1-800-252-0228  
1-800-446-0505

**CONSTRUCTION EQUIPMENT & PARTS SALES**

Rt. 22, RD 2, Box 2230, Grantville, PA 17028

**Smithco 35-Ton Detachable Gooseneck Trailer \$5,000.00**

**PARTS PRICED RIGHT DISMANTLING MOST MAKES & MODELS**

OF CONSTRUCTION EQUIPMENT		
Cat	IHC	Gallon
Case	Michigan	Wabco
John Deere	Hough	Dynahoe
Trojan	Terex	Koehring
Drott	Hein Werner	AC/Flat Allis & Others

**Over 600 Machines Dismantled**

**NATIONWIDE PARTS LOCATING SERVICE**  
We have two Computer Parts Locator Networks Nationwide & Canada, ready to serve you in less than a minute over 400 Used & New Parts Dealers will receive your parts request. Parts are located easily & at substantial savings. Try Our Services.

Save \$\$\$ Parts Shipped Anywhere Direct To You. All Parts Guaranteed "We Return All Phone Calls"

**BALANDA EQUIPMENT CO., INC.**

P.O. Box 407 • Route 29 • Palm, PA 18070  
Phone: (215) 679-3900  
• Fax: (215) 679-8727

**TOLL FREE: 1-800-322-8030**