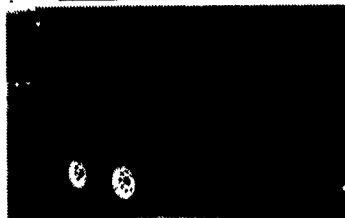


ATTENTION ALL CONTRACTORS/FARMERS



Highway Dump With Lockable Tool Box



Low Profile Dump With Removeable Stock Racks



Roll Back Trailer

From Equipment Hauling To Material Dumping
The Highly Versatile "Load Boss"

Multipurpose Dump Trailers Do It All

- Ability to Haul Equipment to Job Site
- Excellent Maneuverability On Both Large & Small Jobs
- Great for Job Site Clean Up

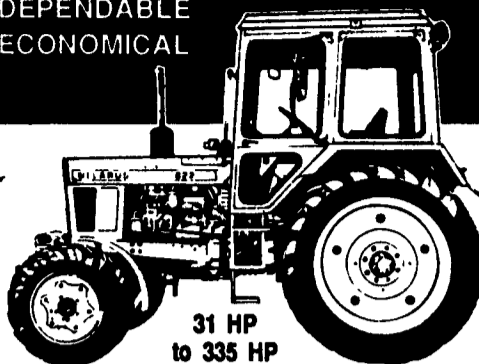
Winter Specials Going On Now!

Call Charles or Brenda at

BURKETT TRAILERS 814-623-8696 or 814-623-9696
Dealers Welcome

Belarus

DEPENDABLE
ECONOMICAL



31 HP to 335 HP

QUALITY TRACTORS BARGAIN PRICES!
Full Year Warranty on Parts and Labor
Join The Move To Belarus

31 HP Diesel	\$5,995
36 HP Diesel 4 WD	\$8,795
70 HP Diesel	\$10,800
70 HP Diesel 4 WD w/Cab	\$14,400
85 HP Diesel	\$12,025
100 HP Diesel 4 WD w/Cab	\$18,925
180 HP Diesel 4 WD Turbo	\$36,500

Check Our Current Low Price Bargains, Beat The Feb. 1st Price Increases

Visit our farm and try our tractors
Call for literature and map.
Leasing Available

**SERVING SOUTHERN PENNSYLVANIA AND MARYLAND
ANDERSON TRACTOR SALES**

Full Service Belarus Dealer
Front End Loader Specialists
MANOR HILL FARM
4600 Breidenbaugh Ln (Off 12200 Manor Rd.)
410-592-7422 GLENARM, MD 410-592-2386
CALL TOLL FREE 1-800-457-5705

1 FARM EQUIPMENT

NEW M&W 15' Heavy Duty Batwing Cutters
Ideal For Shredding Fodder
Reg. \$9000
Spec. \$7000

NEW & USED FOX EQUIPMENT
Fox 2R Snapping Head
Very Nice\$700
Variety Of Used Fox Heads

White 6100 Planters
1-6 Row In Stock
NEW TILLAGE

1-White 445
Combination Chisel Plow 9 Ft. Wide w/Subsoiler
1-White 281 Offset Disc 10'10" Wide 24" Blades
Special Price \$8,500

USED
White 2-155 w/cab, air cond., 2 remotes.
NH Model 469 Haybine
.....\$1,500

WHITE
BY WHITE NEW IDEA
S **HUEY'S SALES SERVICE**
Jonestown Road
Ono, PA 17077-0129
717-865-4915
800-331-2989

**MECHANICS SPECIALS
MANY OTHER FORKLIFTS IN
YARD - CALL FOR SPECS**



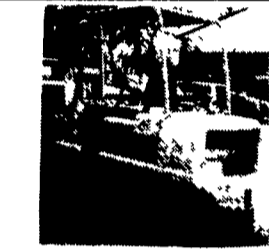
20,000 Lb. Towmotor, Diesel, V.G. Condition
\$9,000



13' Boom To Fit 15-30,000 Lb. Lift \$1,750

FORKLIFTS

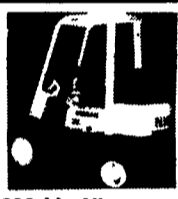
3,000 Lb. Raymond Reach Truck, Good Cond.	\$3,000
8,000 Lb. Yale, Dual Pneumatic, Runs Good	\$3,000
5,000 Lb. Hyster, 1984, Solid Tire, LPG, 3 Stage Mast, Very Good Cond.	\$5,000
2,000 Lb. Mitsubishi 87" Solid Tire, LPG, Very Good Cond.	\$4,000
(2) 12,000 Lb. Towmotor Pneumatics Detroit Diesels, Very Good Cond.	\$4,500 & \$7,500
6,000 Lb. Clark Pneumatic Gas 3 Stage Mast, Very Good Cond.	\$5,500
(3) Electric Pallet Jacks	\$500 For All 3
4,000 Lb. Toyota Electric 1984 Sideshift, Excellent Cond.	\$5,000
6,000 Lb. A/C Pneumatic Gas O Time On Eng., Trans. & Acces's Like New	\$6,500
5,000 Lb. Clark, Electric w/charger, very good condition	\$4,000
4,000 Lb. Hyster Solid Tire, 3 Stage Gas, Very Good Cond.	\$2,500



6,000 Lb. Cat Gas, Auto, Very Good Cond.
\$4,900



5,000 Lb. Hyster 1984 Side-Shift Very Good Cond.
\$6,500



5,000 Lb. Nissan 1984 Very Good Cond.
\$5,000



15,000 Lb. Hyster Gas, Very Good Cond.
\$7,500



5,000 Lb. Baker New Gas Engine
\$4,500

HYMAN EQUIPMENT

1408 Midmeadow Rd.
BALTIMORE, MD. 21286-1607
(410) 337-3570
Call Alan Hyman Anytime

Best Buys in Used Equipment

TRACTORS

- Case SC Tractor
- Case 930 Tractor
- Case 430
- Case 1070
- IH 2500A Tractor w/Loader
- David Brown 990 w/Loader
- David Brown 990
- Int. 340 w/Loader
- Int. 656
- Int. 1086
- Farmall 300
- Farmall 350
- Ford 8N
- Case IH 7120, MFD—\$32,000!
- JD "B" Tractor
- JD 2140 70 Hp. w/Cab
- Super M
- MF 2805 Tractor
- MF 2675 Tractor

TILLAGE

- Int. 2-Bot. Trailer Plow
- Ford 5-Bottom Plow
- IH 370 Disk Harrow, 13 Ft.
- Case 16" Reset Plow, 5 Bottom
- IH 710 5-Bottom Plow
- JD 5x16 Plow
- JD 1120 Disk
- Oliver 16" Rollover Plow
- Bush Hog 15 Ft. Disk
- Farmhand 14' Cultipacker

HAY EQUIPMENT

- NH 479 Haybine
- NH 489 Haybine
- NI 404 Rake
- NI 507 Mower Conditioner
- Hesston 1014, Plus 2 Windrower
- Hesston 1090 Windrower
- Hesston 1091 Windrower
- Case 650 Windrower
- IH 445 Square Baler
- NH 78 Baler
- NH 271 Baler

MISCELLANEOUS

- NH 36 ft. Elevator
- Gehl 99 Blower
- NI 620 Blower
- Automatic Roller Mill
- NI 218 Spreader
- NI 224 Spreader
- NI 245 Spreader
- NI 353 Spreader
- NI 362 Spreader
- HM 1674 Spreader
- Gehl 350 Spreader
- Gehl 250 Spreader
- 500 Gal. Century Sprayer
- (4) Weaverline Carts, 30 Bushel
- JD 8300 Drill—Soybean Special!
- Cole Vegetable Planter

HARVESTING EQUIPMENT

- Hesston 2000-100 Harvester
- NI 315 Sheller
- NI 324 Sheller
- NI 737 Husking Bed, Nice!
- NI 767 Super Chopper
- NI 323 1-Row Corn-picker
- NI 325 12 Row Husking Bed
- IH 120 Forage Box
- Badger Forage Box
- JD 3800 Harvester

LOADERS

- Case 530 Backhoe
- Case 1835C
- Case 1835 Gas
- Case 1830
- Case 1845 Diesel
- NH 555 Skid Loader
- Caterpillar 933 Loader
- D100 Backhoe For 1845C

MID-WINTER SALE...

MANURE SPREADERS



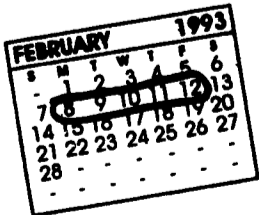
NEW IDEA
BY WHITE NEW IDEA



CALL FOR MODELS AND PRICES!

ZIMMERMAN'S FARM SERVICE

1/2 Mile West Off Rt. 501 On School Rd., Bethel, Pa.
717-933-4114



Coming February 8 to 12...

Watch For Open House Specials!

ZIMMERMAN'S FARM SERVICE

1/2 Mile West Off Rt. 501 On School Rd., Bethel, Pa.
717-933-4114

