

Top Pennsylvania DHIA Herds By County For December

(Continued from Page D2)

NAME	BR	NO COWS	MILK	3	FAT	FAT	PRO	PRO
		IN MILK	LBS	X	LBS	PCT	LBS	PCT
FLOYD RINEHIMER	B3	33.2	17729	0	717	4.0	549	3.1
ERIC STEVENS	B3	26.5	16871	0	679	4.0	546	3.2
ALBERT BROYAN	G3	38.1	16526	0	675	4.1	531	3.2
CHARTER LAND FARMS	B8	22.6	15791	0	551	3.5	527	3.3

WANTZ FARMS	B3	31.9	16842	0	676	4.0	552	3.1
THOMAS SPEES	B3	49.4	17012	0	623	3.7	548	3.2
G L CARLSON INC NO 4	B3	43.1	17373	0	541	3.1	541	3.1
STRATTON FARMS	3	49.0	16505	0	634	3.8	533	3.2
KEVIN DIBBLE	B3	41.6	16543	0	628	3.8	517	3.1
ROBERT STRAIT	G3	36.2	16185	0	576	3.6	504	3.1

LYCOMING

NAME	BR	NO COWS	MILK	3	FAT	FAT	PRO	PRO
		IN MILK	LBS	X	LBS	PCT	LBS	PCT
EUGENE W HALL	3	78.3	23512	0	903	3.8	818	3.5
RON + LORI HEMBURY	3	63.2	22959	0	843	3.7	735	3.2
LOST BROOK FARM	B3	156.8	22210	0	844	3.8	727	3.3
STEVEN C & SUSAN NEFF	B3	59.7	22139	0	778	3.5	704	3.2
MARVIN L WALTZ	B3	46.2	21333	0	822	3.9	687	3.2
BOWER CREST FARM	3	33.6	20480	0	764	3.7	680	3.3
SCHON-CREST FARMS	B3	52.5	21028	0	756	3.6	679	3.2
SAMUEL & LARRY FRY	3	111.5	20649	0	759	3.7	668	3.2
CHA DER DAIRY	B3	52.6	19535	0	729	3.7	667	3.4
BENJAMIN E MCCARTY	B3	42.1	20163	0	782	3.9	663	3.3
STEPHEN R WALTZ	G3	77.2	20114	0	719	3.6	656	3.3
JOHN SNYDER	3	48.3	19367	0	751	3.9	637	3.3
EDGAR+WILLIAM HUNTER	B3	28.1	19799	0	759	3.8	636	3.2
JOHN P LEATHERMAN	B3	63.3	20193	0	730	3.6	633	3.1
MONT WILL FARMS	B3	40.0	20121	0	755	3.8	630	3.1

MERCER

NAME	BR	NO COWS	MILK	3	FAT	FAT	PRO	PRO
		IN MILK	LBS	X	LBS	PCT	LBS	PCT
RALPH + GARY OAKES	4	15.4	18351	0	914	5.0	747	4.1
ROLLIN+DENNIS JAMES	B3	46.1	23146	1	896	3.9	741	3.2
RALPH+GARY OAKES	B3	44.1	21987	1	797	3.6	729	3.3
LENGEL BROTHERS	G3	164.3	21251	0	801	3.8	705	3.3
PAULA DELL HOLSTEINS	B3	56.4	21699	1	785	3.6	696	3.2
DALE L KEPNER	B3	40.2	21975	0	839	3.8	694	3.2
DOUGLAS K ROBINSON	B3	24.5	21402	0	832	3.9	691	3.2
J D PHILSON	B3	30.3	22229	1	786	3.5	690	3.1
CANON DAIRY	B8	83.9	21728	0	818	3.8	688	3.2
ARTHUR BAXTER	3	40.3	22021	0	830	3.8	683	3.1
EDWIN C OLSON	G3	26.6	20425	0	767	3.8	664	3.3
HAZEL GANDER	B3	73.0	21304	0	774	3.6	664	3.1
MRS CHARLES ROBINSON	B3	47.9	20328	0	778	3.8	662	3.3
DEWANE & WM COULTER	3	88.5	20640	0	767	3.7	655	3.2
LARRY STEVENSON	G3	41.6	21065	0	722	3.4	655	3.1

MCKEAN

NAME	BR	NO COWS	MILK	3	FAT	FAT	PRO	PRO
		IN MILK	LBS	X	LBS	PCT	LBS	PCT
KEN + DOUG COMSTOCK	3	35.8	22235	0	832	3.7	711	3.2
JOHN + LESTER LAPP	3	65.6	21860	0	815	3.7	702	3.2
ALAN KINNEY	3	27.1	20329	0	804	4.0	669	3.3
FRANCIS JR+TIM DYNDA	B3	36.2	21077	0	760	3.6	657	3.1
NEAL D GORDON	3	40.7	19426	0	692	3.6	622	3.2
CHARLES IRONS	8	79.3	18939	0	772	4.1	620	3.3
CHERYL+MATT WINDSOR	B3	30.5	18785	0	722	3.8	615	3.3
PETER CAUSER	B3	41.0	18548	0	667	3.6	584	3.1
BRUCE+PAIGE MILES	B3	43.2	18282	0	684	3.7	576	3.2

MIFFLIN

NAME	BR	NO COWS	MILK	3	FAT	FAT	PRO	PRO
		IN MILK	LBS	X	LBS	PCT	LBS	PCT
DAVID C YODER	3	63.1	23870	0	921	3.9	781	3.3
G SHELDON PEACHEY	3	63.6	23168	0	877	3.8	764	3.3
DARREN+CARYN PEACHEY	3	50.5	22977	0	881	3.8	753	3.3
JOHN L KING	3	50.4	22595	0	918	4.1	732	3.2
LA FAY FARM	B3	42.6	21931	0	816	3.7	730	3.3
VALLEY VIEW FARM	3	80.2	21467	0	792	3.7	729	3.4
VERN-LEE HOLSTEINS	3	55.1	22702	0	887	3.9	727	3.2

(Turn to Page D5)

Mohair Producers Should File Receipts

YORK (York Co.) — The Agricultural Stabilization and Conservation Service (ASCS) reminds wool and mohair producers to file their 1992 sales receipts by January 31, so that the documents can be used in determining the national average market price.

Although the deadline for filing 1992 receipts to qualify for 1992 price support payment is March 1, ASCS encourages wool and mohair producers to file in January because USDA's National Agricultural Statistics Service needs the data in February to compute wool and mohair market prices.

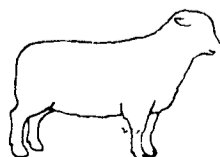
"Since national average market prices are the basis for wool and mohair payment rates, producers are urged to submit their sales documents to us at least by the end of January," said E. Wayne Beshore, chairperson of the York County ASC Committee.

He reminds producers that "activity engaged in farming" and "person" determinations must be made to be eligible for a payment.

"For 1992 and subsequent marketings, the status date for wool and mohair producer's eligibility determination is the date the first application is submitted but no later than December 1 of the applicable marketing year," Beshore said. "Additionally, the policy regarding payments to no more than three entities under the acreage reduction program applies to wool and mohair producers as well."

Wool and mohair producers are required to certify that they are in compliance with highly erodible land and wetland conservation provisions.

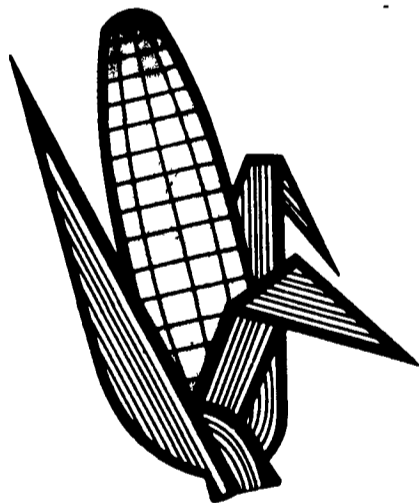
"We encourage producers to bring in their 1992 sales receipts as soon as possible," Beshore said.



COMING...

FEBRUARY 13 ISSUE

SPECIAL SECTION ON



CORN

TALK

PENNSYLVANIA MASTER CORN GROWERS ASSOC.

- PRESIDENT'S NEWSLETTER
- PA. MASTER CORN GROWERS FEATURES
- NATIONAL MASTER CORN GROWER FEATURES

**ADVERTISERS PLAN NOW TO RESERVE
YOUR SPACE - PHONE 717-394-3047 or 626-1164**

DEADLINE FRIDAY, FEBRUARY 5

A LANCASTER FARMING EXCLUSIVE