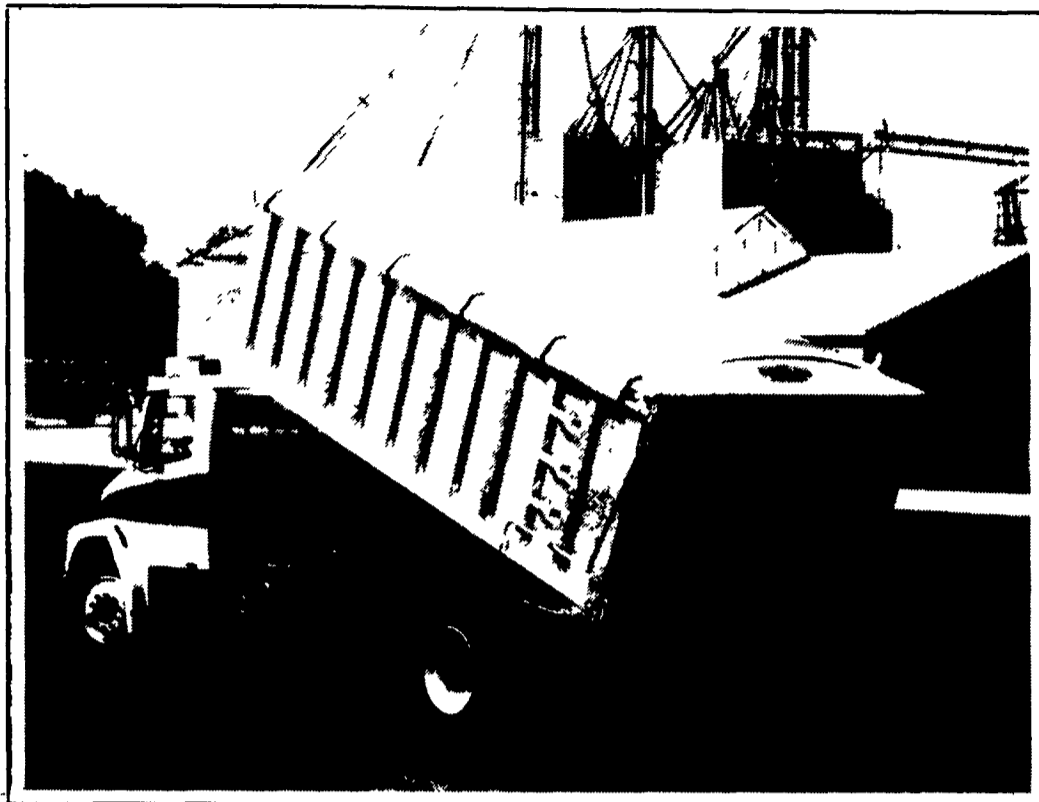


# In grain bodies, aluminum makes \$ense.



Eby Aluminum Grain Bodies pay off in dependable long-term service. Their all-aluminum construction means:

- Greater payload efficiency
- Maintenance-free service
- Substantially higher resale value.

*If you think that steel is cheaper, think again. We can show you how aluminum actually saves you dollars in the long run.*

Eby's time-tested design is available in lengths to 24' and a 48" standard height; optional heights include 54", 60" and 72". A long list of standard features such as tie rail, built-in steps, aerodynamic uprights and Harsh hoist is complemented

by a full range of custom options, including tailgates, Wahpeton tarps and chute. When you select your next grain body, consider the value that aluminum offers. It's a worry-free investment in your future.



**M.H. Eby, Inc.**

1194 Main Street (Route 23)  
Blue Ball, PA 17506  
(717) 354-4971 (800) 292-4752 FAX: (717) 355-2114

4435 State Route 29  
West Jefferson, OH 43162  
(614) 879-6901 (800) 752-0507 FAX (614) 879-6904



**USED  
EQUIPMENT  
SALE**

**POSSUM BELLY  
TRAILERS**

- 1988 Eby 48'x96"x13'6" Cattle/Hog Combo (Jallhouse)
- 1987 Eby 48'x96"x13'6" Cattle/Hog Combo (Jallhouse)
- 1984 Merritt 48'x96"x13'6" Stocker-Feeder (Jallhouse)
- 1982 Wilson 45'x96"x13'6" Cattle-Pot

**STOCK  
TRAILERS**

- 1991 Four Star 18' Gooseneck
- 1986 20'x8' Aluminum Wallinga
- 1983 Eby 18'x7'6"x6'6" Gooseneck

**BODIES**

- 12' Eby Aluminum Cattle Body
- 17' Eby Cattle Body
- 21' Eby Aluminum -Double Deck
- 20' Fruehauf - Deck-Rail & Decking
- 8 1/2' Eby Aluminum - Chicken Body

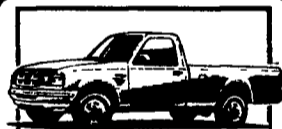
**M.H. Eby, Inc.**

1194 Main Street (Route 23)  
Blue Ball, PA 17506  
(717) 354-4971 (800) 292-4752 FAX: (717) 355-2114  
4435 State Route 29  
West Jefferson, OH 43162  
(614) 879-6901 (800) 752-0507 FAX: (614) 879-6904

**150  
TRUCKS IN STOCK**

# Overstocked With Trucks!

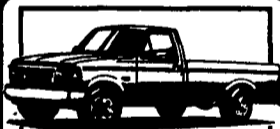
The Area's Best Selection Of Light & Heavy Duty Trucks On Sale Now!



**NEW '93 FORD  
RANGER XLT 4x2**

5-spd O/D trans, sliding rear window, chrome rear bumper, stereo cassette, interval wipers, cast alum wheels, 2-tone. #F7314

**SAVE \$870  
OVER**  
NOW PRICED AT \$10,730



**NEW '93 FORD  
F-150 XL 4x2**

6 cyl eng, 5-spd O/D trans, headliner, 5450 GVW, aux fuel tank, interval wipers, argent step bumper, stereo cassette, more! #F7318

**SAVE \$1220  
OVER**  
NOW PRICED AT \$11,557



**NEW '93 FORD  
F-150 XL 4x4**

6 cyl eng, 5-spd O/D trans, headliner, 6250 GVW, aux fuel tank, interval wipers, argent step bumper, stereo, much more! #F7279

**SAVE \$1500  
OVER**  
NOW PRICED AT \$13,997



**NEW '93 FORD  
E-150 CARGO VAN**

V8 eng, auto O/D trans, stereo, aux fuel tank, sport wheel covers, chrome bumpers, 6500 GVW, tinted glass, more! #F7199

**SAVE \$2550  
OVER**  
NOW PRICED AT \$15,186



**NEW '92 FORD  
F-150 FLARESIDE 4x4**

XLT trim, V8, auto O/D trans, air cond, power windows & locks, cassette, elec 4x4 Touch-Drive, elec mirrors, chrome bumper.

**SAVE \$4800  
OVER**  
NOW PRICED AT \$16,006



**NEW '92 FORD  
F-150 SUPERCAB XLT**

4x2, V8, auto O/D trans, air cond, power windows & locks, sliding rear wind, elect mirrors, alum wheels, chrome bumper.

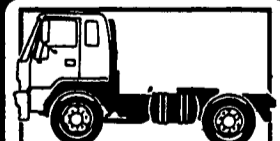
**SAVE \$4600  
OVER**  
NOW PRICED AT \$16,017



**NEW '93 FORD  
F-250 4x4**

V8 eng, 5-spd trans, air cond, stereo, 8600 GVW, headliner, argent bumper, sport wheel covers, spare tire & wheel. #F7159

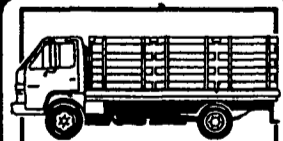
**SAVE \$2650  
OVER**  
NOW PRICED AT \$17,365



**NEW '93 ISUZU  
NPR CAB & CHASSIS**

135HP turbo diesel, 5-spd trans, 33 gallon fuel tank, exhaust brake, 14,250 GVW, stereo cassette, tilt wheel, interval wipers, more! #3119

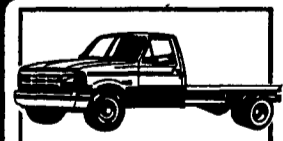
**\$18,240**



**NEW '93 ISUZU  
NPR STAKE BODY**

135HP turbo diesel, 5-spd trans, 12 foot stake body, 11,000 GVW, exhaust brake, tilt wheel, 33 gallon fuel tank, more! #3118

**SAVE \$5040  
OVER**  
NOW PRICED AT \$18,992



**NEW '93 FORD  
SUPERDUTY CAB & CHASSIS**

V8 diesel supercooling eng, 5-spd O/D trans, 161" wheel base, 15,000 GVW, headliner insulation pkg, cassette, more! #F7316

**SAVE \$3800  
OVER**  
NOW PRICED AT \$19,515



**NEW '93 FORD  
F-250 SUPERCAB XLT**

V8 diesel eng, auto O/D trans, trailer towing pkg, air cond, pwr windows & locks, cassette, aux fuel tank, chrome bump. #F7212

**SAVE \$3100  
OVER**  
NOW PRICED AT \$21,993



**NEW '92 FORD  
CF-7000 CAB & CHASSIS**

185HP diesel eng, 6-spd trans, air brakes, 50 gallon fuel tank, power steering, 189" wheel base, 26,000 GVW, radial tires, more! #F6221

**\$26,579**

PRICES INCLUDE REBATES IF APPLICABLE. TAX & TAGS ADDITIONAL.

**New Holland FORD ISUZU**

**717-354-4901 • 800-642-8605**



Route 23, New Holland, PA

Just 15 Minutes East Of  
Lancaster On Route 23

