

Open Beef Show Competition

(Continued from Page C4)

Old Bull: Tammy Gelsinger. Senior Champion Bull: Tammy Gelsinger.
GRAND CHAMPION BULL
 Harvest Plantation
RESERVE
 Maple Cove Breeders

Get-of-Sire: 1. Maple Cove Breeders, Shoemakers. Premier Exhibitor: Harvest Plantation. Premier Breeder: Maple Cove Breeder.

ANGUS

Junior Heifer Calves: 1. Tor Tamarack Angus. 2. Seldom Seen Farm. 3. Suzanne Bishard. Junior Heifer Calves: 1. Greg Krueger and Family. 2. Mt. Valley Angus. 3. Rocky Forge. Junior Heifer Calves: 1. Greg Krueger and Family. 2. Kristin J. Chupp. 3. Rocky Forge. Late Senior Heifer Calves: 1. Robert Work. 2. Seldom Seen Farm. 3. Eric Berkeimer. Early Senior Heifer Calves: 1. Jodie R. Weaver. 2. Krista Martin. 3. McCullough Angus. Late Summer Heifer Calves: 1. Dale Rains. 2. Dale Rains. Early Summer Heifer Calves: 1. Enn S. Krueger. 2. Dale Rains. 3. Kristin J. Chupp. April Junior Yearling Heifer: 1. Bryan Dean. March Junior Yearling Heifer: 1. Curt Stockdale. 2. Amy L. Krueger. 3. Dale Rains. Early Junior Yearling Heifer: 1. Linkland Farm. Late Senior Yearling Female: 1.

Raymond Tait. Junior Heifer Calf Champion: Greg Krueger and Family. Reserve: Greg Krueger and Family. Senior Heifer Calf Champion: Jodie R. Weaver. Reserve: Krista Martin. Intermediate Champion: Krueger Family. Reserve: Dale Rains. Junior Champion Female: Curt Stockdale. Reserve: Bryan Dean. Senior Champion Female: Jodie Weaver.

GRAND CHAMPION HEIFER
 Erin S. Krueger
RESERVE
 Krueger Family

Junior Bull Calves: 1. Raymond Tait. 2. Seldom Seen Farm. 3. Workland and Cattle Co. Junior Bull Calves: 1. Mt. Valley Angus. 2. Dale Rains. 3. Raymond Tait. Junior Bull Calves: 1. Graystone-Stockdale. 2. Dale Rains. 3. Erskine Cash II. Junior Bull Calves: 1. Graystone Stockdale. 2. Mt. Valley Angus. 3. Jason Daniel Beer. Late Summer Bull Calves: 1. Workland Cattle. Early Summer Bull Calves: 1. Dan McIntyre. April Junior Yearling Bulls: 1. Rocky Forge. Summer Senior Yearling Bulls: 1. Rocky Forge. Junior Bull Calf Champion: Graystone-Stockdale. Reserve: Mt. Valley Angus. Intermediate Champion: Workland Cattle. Reserve: Rocky Forge. Junior Champion Bull: Rocky Forge. Senior Champion Bull: Rocky Forge.

GRAND CHAMPION BULL
 Rocky Forge

Get of Sire: 1. Dale Rains. Junior Get-of-Sire: 1. Greg Krueger. 2. Raymond Tait. 3. Seldom Seen Farm. Premier Exhibitor: Greg Krueger and Family. Premier Breeder: Greg Krueger and Family.

LIMOUSIN

Summer Heifer Calf: 1. Brian Linebaugh. 2. Jonathan Lori. 3. Golden Hill Farms. Late Spring Heifer Calves: 1. Quail Run Ranch. 2. Maple Lane Farm. 3. Clay Acres. Early Spring Heifer Calves: 1. Quail Run Ranch. 2. Maple Lane Farm. 3. Black Diamon Limo Farms. Winter Heifer Calves: 1. The Mosher Family. Senior Heifer Calves: 1. Jennifer D. Lori. 2. Quail Run Ranch. 3. James Robison. Champion Heifer Calf: Quail Run Ranch. Reserve: Quail Run Ranch. Late Summer Yearling Heifer: 1. Mary Jo Reynolds. 2. John E. MacConnel. 3. Jamie Boyer. Early Summer Yearling Heifer: 1. Clay Acres. 2. Scott Stone. 3. Ben Strie. Late Junior Yearling Heifer: 1. Quail Run Ranch. 2. Jon Harnish. 3. The Mosher Family. Junior Yearling Heifers: 1. Quail Run Ranch. 2. Holly McLaughlin. Junior Champion Heifer: Quail Run Ranch. Reserve: Quail Run Ranch. Senior Yearling Heifer: 1. Jamie Boyer. Senior Champion Heifer: Jamie Boyer.

GRAND CHAMPION HEIFER
 Quail Run Ranch
RESERVE
 Quail Run Ranch

Summer Bull Calves: 1. Maple Lane Farm. 2. Timothy Bishop. Late Spring Bull Calves: 1. Maple Lane Farm. 2. Robert Line. 3. Mountain View Farms. Early Spring Bull Calves: 1. Jon Harnish. 2. Jon Harnish. 3. Trent Hendricks. Junior Bull Calves: 1. Quail Run Ranch. 2. Quail Run Ranch. Winter Bull Calves: 1. Holly McLaughlin. Senior Bull Calves: 1. The Mosher Family. 2. Holly McLaughlin. Champion Bull Calf: Maple Lane Farm. Reserve: Quail Run Ranch. Early Summer Yearling Bull: 1. Jamie Boyer. Late Junior Yearling Bulls: 1. Lori Limousin Farms. 2. Quail Run Ranch. Junior Champion Bull: Lori Limousin Farms. Reserve: Quail Run Ranch. Late 2-Year-Old Bull: 1. The Mosher Family. Senior Champion: The Mosher Family.
GRAND CHAMPION BULL
 Maple Lane Farm



H. Jesse Haas was awarded grand Charolais bull at the Farm Show.

RESERVE
 Lori Limousin Farms

RESERVE
 Ray and Mary Grimes

Produce of Dam: 1. John W. Lori. 2. The Mosher Family. 3. The Mosher Family. Junior Get of Sire: 1. Maple Lane Farm. 2. The Mosher Family. 3. Jon Harnish. Get of Sire: 1. Maple Lane Farm. 2. The Mosher Family. 3. Jamie Boyer. Breeders Herd: 1. Quail Run Ranch. 2. Maple Lane Farm. 3. The Mosher Family. Premier Exhibitor: Quail Run Ranch. Premier Breeder: The Mosher Family.

CHAROLAIS

Late Spring Heifer Calves: 1. Dunkard Valley Farms. 2. Ed L. Krevel. Early Spring Heifer Calves: 1. Celebration Charolais. 2. KC Acres. 3. KC Acres. Junior Heifer Calves: 1. Ray and Mary Grimes. Junior Calf Champion Female: Celebration Charolais. Reserve: Dunkard Valley Farms. Winter Heifer Calves: 1. Ray and Mary Grimes. Senior Heifer Calves: 1. Ray and Mary Grimes. 2. Orcan Little. Senior Calf Champion Female: Ray and Mary Grimes. Reserve: Ray and Mary Grimes. Late Summer Yearling Female: 1. Orcan Little. Summer Yearling Female: 1. H. Jesse Haas. Late Spring Yearling Female: 1. Ray and Mary Grimes. 2. H. Jesse Haas. Junior Yearling Female: 1. Walter E. Heistand. Senior Yearling Female: 1. Stan Reever. 2. Ray and Mary Grimes. 3. Stan Reever. Senior Champion Female: Ray and Mary Grimes. Reserve: H. Jesse Haas.
GRAND CHAMPION HEIFER
 Celebration Charolais

Late Spring Bull Calf: 1. Kenley Jo Myers. 2. Ed L. Krevel. Early Spring Bull Calves: 1. KC Acres. Junior Bull Calves: 1. Ray and Mary Grimes. Junior Calf Champion: Kenley Jo Myers. Reserve: Ray and Mary Grimes. Summer Yearling Bull: 1. H. Jesse Haas. 2. Ed L. Krevel. Junior Yearling Bulls: 1. H. Jesse Haas. Junior Champion Bull: H. Jesse Haas. Reserve: Ed L. Krevel.

GRAND CHAMPION BULL
 H. Jesse Haas
RESERVE
 Ed L. Krevel

Produce of Dam: 1. Ed L. Krevel. Junior Get of Sire: 1. Raymond A. Bratton. Get of Sire: 1. Ed L. Krevel. Breeder's Herd: 1. Ray and Mary Grimes. 2. Raymond A. Bratton. 3. Ed L. Krevel. Group of Five Head: 1. Ray and Mary Grimes. 2. Ed L. Krevel. Premier Exhibitor: Ray and Mary Grimes. Premier Breeder: Ray and Mary Grimes.

SUPREME CHAMPION BEEF COW
 Erin Krueger

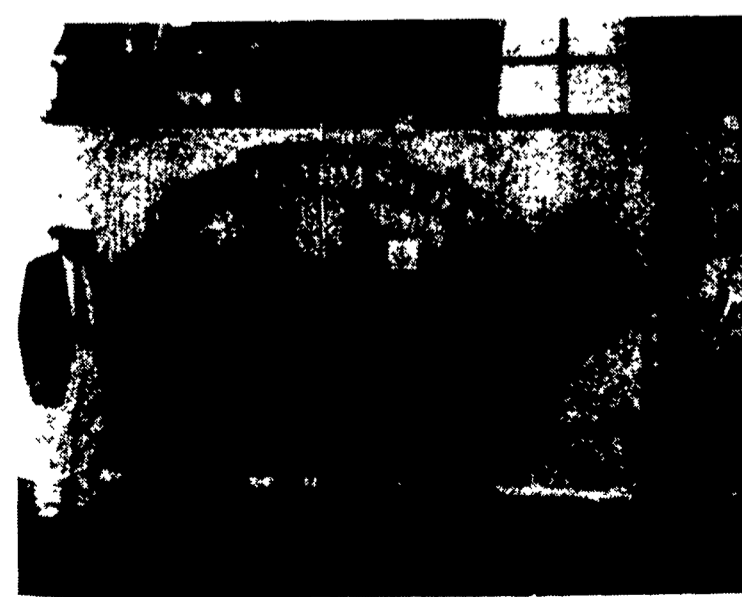
SUPREME CHAMPION BEEF BULL
 Curt Stockdale



Simmental grand champion bull was awarded to Lee Snyder, Harvest Plantation, for Harvest Five Bios, a late spring bull calf.



Kevin Rooker, 11, shows his grand champion Polled Hereford heifer, KWR Fore Girl, from the junior heifer calf class, at the Farm Show. Behind the heifer is show judge Howard Hoffman.



Angus bull grand champion was presented to Rocky Forge.

Silage Production Conference Set

ITHACA, N.Y. — Silage production is a central component of animal agriculture in temperate climates. Silage Production from Seed to Animal, a conference to be held in Syracuse, New York, on February 23-25, will focus on this important agricultural issue.

Thirty prominent agricultural scientists from around the country will discuss all aspects of silage production and utilization, from variety selection to troubleshooting silage nutrition problems. Speakers include agronomists, agricultural engineers, farm advisers, industry representatives, animal scientists, dairy nutritionists, extension agents, agricultural economists, and others. A keynote address will be delivered by Marshall McCullough, professor emeritus, University of Georgia.

The conference will provide practical guidelines for producers and promote an integrated systems approach to silage production. The session topics are forage in the field; preserving silage; silage additives; choosing a silo; feeding silage; troubleshooting silage nutrition problems; and managing human, environmental, and economic factors. Two evening discussion sessions will focus on the importance of variety and management and nutrition considerations.

The intended audience includes livestock farmers, dairy farmers, forage producers, farm advisers, industry representatives, veterinarians, plant breeders, and university specialists. The conference structure will encourage interaction between participants and speakers through discussion periods after every few presentations as well as through evening discussion sessions.

The conference content was developed by a committee that included Janet Fallon, crop specialist, Agway, Inc.; Jim Barney, western New York dairy farmer;

and Tom Kilcer, Cornell Cooperative Extension agent. Cornell professors Ron Pitt, agricultural engineer; Alice Pell, animal scientist; and Shaw Reed, agronomist, also provided leadership in creating the conference program.

The conference is sponsored by the Northeast Regional Agricultural Engineering Service in conjunction with the American Society of Agricultural Engineers, American Dairy Science Association, American Society of Agronomy, the Crop Science Society of America, and the Soil Science Society of America.

The registration fee is \$130 if received before February 5. Late or walk-in registration is \$145. The fee includes admission to the conference and evening discussion sessions, a buffet lunch on February 24, break refreshments,

a copy of the conference proceedings, and a pass to the New York State Farm Equipment Show. The New York State Farm Equipment Show will be held from February 25-27 on the New York State Fairgrounds, 15 minutes from the site of the conference.

The conference will be held at the Sheraton Inn Syracuse, 7th North Street and Electronics Parkway, Liverpool, New York. The room rates are \$65 for a single or double if you let the hotel know that you will be attending the conference. Rooms have been set aside until January 22, 1993 and can be reserved by calling (315) 457-1122.

For a brochure listing the presentation titles and speakers, contact NRAES, 152 Riley-Robb Hall, Cooperative Extension, Ithaca, NY 14853, (607) 255-7654.

Census Of Ag Report Forms Due

WASHINGTON, D.C. — Farmers and ranchers are reminded that the deadline for returning the 1992 Census of Agriculture report form is February 1. Most forms have been returned, according to the U.S. Bureau of the Census.

For those who have not completed their form, estimates are acceptable if records are not available. Those not operating a farm or ranch who received a form should return it so they will not be contacted again.

If you're thinking about not returning the form, you should know that you are required by law to answer the census. Delay sharply increases the cost of the census and postpones the release of data which is scheduled to begin this fall.

Assistance in completing census forms is available locally from the USDA offices of the Cooperative Extension Service, Soil Conservation Service, Agricultural Stabilization and Conservation Service, Farmers Home Administration, and vocational agriculture teachers. Farmers can also call the Census Bureau's toll-free number at (800) 233-6132 for assistance or to obtain a report form.

All information collected in the agriculture census is kept confidential by law. This 24th census will provide a detailed picture of the status of agriculture for the nation's 3,100 counties.

A to Z it's All in the CLASSIFIEDS