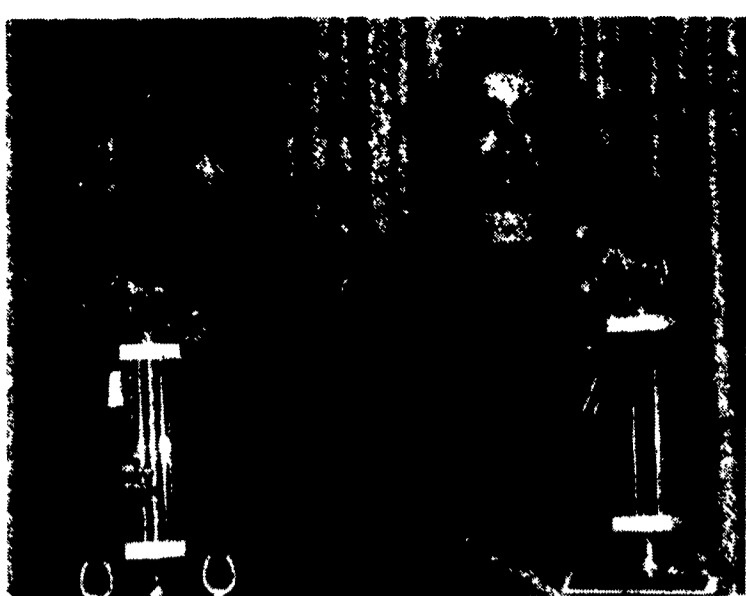
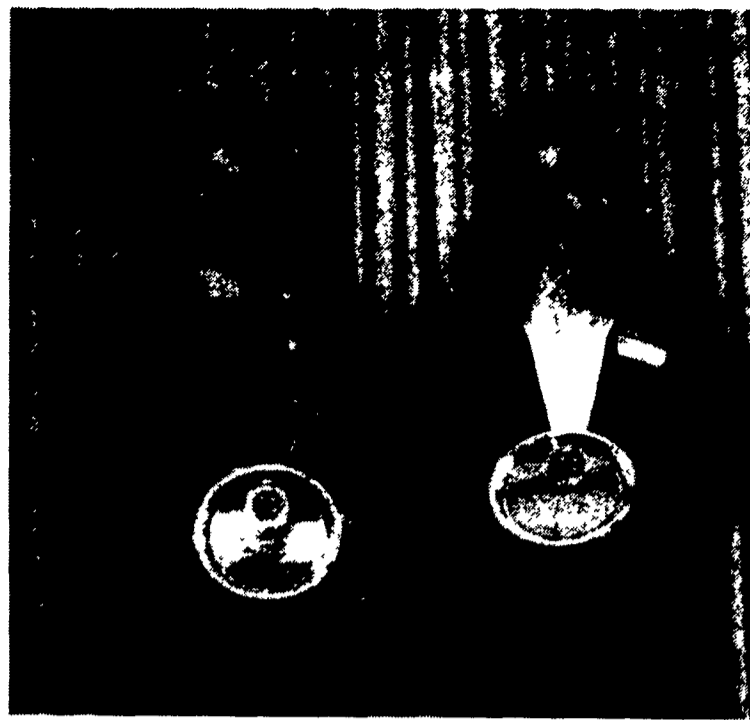


(Continued from Page B18)

Grumell.
4-H Sportsmanship Award: Heather Moyer (Jr.), Kari Moyer (Sr.).
COUNTY AWARDS: Grooming & Showmanship County Level
 12 and Under Holly Sanderson, 13-15 Cori Rife, 16 & over Becky Preiss.
County Production Showmen - Allison Eberly (Jr.), Lori Hamish (Sr.).
County & Regional Recognition Winners: Gabriel Bowman, Dallasa Brown, Beth Buckwalter, Jessie East, Kirsten Kauffman, Pam Lehman, Kim McLaughlin, Kari Moyer, Heather Oberholzer, Jessi Pthal, Robert Shuster-Edelson, Samara Shuster-Edelson, Kelli Sullivan, Joy Young, Spring Younts, Megan East, Melissa Melskey, Carol Hollingsworth.
State 4-H Achievement Day Awards - Joy Young, Beth Buckwalter, Megan East, Spring Younts, Lori Hamish, Sharon Hamish, Mike Kerdeman, Kari Moyer, Pennie Petersen.
State Awards - Jennifer Goodman, Sara Harris, Jessica Hill, Kyle Kettering, Lisa Pannebecker, Nathan Stoltzfus, Kerra Allen, Carl Stout, Gabriel Bowman, Noel Benner, Kristy Frybarger, Carl Hoover, Becky Preiss, Daniel Talbot, Lyndsy Holton, Robert Shuster-Edelson, Samara Shuster-Edelson, Devon Imhoff, Erin Hess, Brianne Grumbling, Lori Hamish, Allison Eberly.
High Point Company, District, State: Becky Preiss (Sr.), Jennifer Goodman (Jr.).

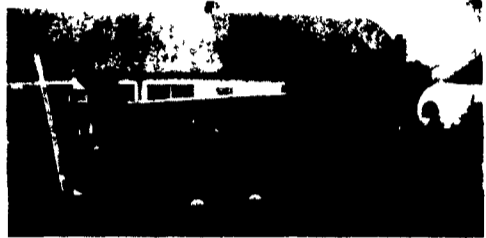


High point county, district and state, from left, Jennifer Goodman (Mountville) Junlor rider and Becky Preiss (Landisville) Senior rider.



County Award Grooming & Showmanship Winners, from left, Becky Preiss 16 & over (Landisville); Cori Rife 13-15 yrs. (Litz); and Holly Sanderson 12 & under (not pictured).

SOYBEAN ROASTING ON YOUR FARM



FULL-FAT ROASTED SOYBEANS
For Maximum Feeding Value
 • High energy, by-pass protein and palatability
 • Toxic enzymes and molds destroyed
 • Peak performance with retained oil and lecithin
 • Improved Total Digestible Nutrients
 • Ultimate rich peanutty flavor and aroma
 • Dried as roasted
 • Roast own grown beans - Avoid trucking and docking
 • Economical and efficient for lower feed costs
 • Ready for use or storage

Custom Roasting in PA and Surrounding States

<p>David N. Groff RD 3 Lewisburg, PA (717) 568-1420</p>	<p>Schnupp's Grain Roasting, Inc. RD 6 Lebanon, PA 1-800-452-4004 717-865-6611</p>
<p>Horst Grain Roasting 3040 Penns Grove Rd. Lincoln Univ., PA 19352 (Chester Co.) (215) 869-8834</p>	<p>Roast-M-Matic Grain Roasting Sales-Service Custom Work Roast-Cool Unit Available</p>

FOR SALE PEANUT HULLS For BEDDING

Most effective as bedding for all kinds of beef and dairy cattle, hogs, horses, sheep and poultry

Any amount delivered or call for at farm.

Ebenshade Turkey Farm

(America's Oldest—
 PO Box 337
 Paradise, Pa.

(717) 687-7631
 1 (800) 273-3882

CUSTOM MADE FEED BINS FOR FARMS — FEED MILLS



- Made of 13 gauge Steel
- All welded seams
- Gravity Flow or Auger

Free Estimates

Also - Steel Roof Trusses for Buildings - Portable Hog Buildings - Bucket Elevators - Grain Augers Distributors - Flow Pipes & Accessories

We Sell, Service & Install
 Ph: 717-345-3724
 Fax: 717-345-2294

STOLTZFUS WELDING SHOP

Owner - Samuel P. Stoltzfus
 RD 3, Box 331
 Pine Grove, PA 17963

LAND PRIDE



Quality equipment from a quality company.



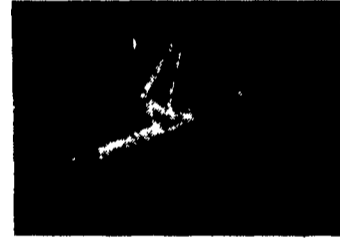
GROOMING MOWER
 3-Spindle, 48", 60", 72" & 90"



BOX SCRAPERS
 42" Through 96"



REAR BLADES
 48" Through 120"



PULVERIZERS
 48" Through 84"



ROTARY CUTTERS
 48" Through 120"



OVER SEEDERS & PRIMARY SEEDERS
 48" And 72"



LANDSCAPE RAKES
 48" Through 96"



TILLERS
 34" Through 76"

Large Inventory In Stock Ready For Delivery

KELLER BROS.

KUBOTA



TRACTORS & EQUIPMENT

Serving Central PA Since 1921

LEBANON
 717-299-6000

PILOTS KELLER BROS. AIRPORT
 717-299-6000

LANCASTER
 717-299-6000

MONDAY-FRIDAY 7:30-5:00
 SATURDAY 7:30-12:00

All-Plant LIQUID PLANT FOOD 9-18-9 PLUS OTHERS!

- Contains 100% white ortho phosphoric acid. Made in USA.
- Non-corrosive. Won't settle.
- Top quality. Excellent service.
- Newest equipment.
- Financially sound... and growing!

Big Demand Requires More Distributors!

- I sell to farmers. How do I become your distributor?
- I'm a farmer. What's the price? Where do I get it?

CALL or SEND FOR FACTS:
 Phone: 814-364-1349

ALL-PLANT LIQUID PLANT FOOD, INC.
 821 State Rd. 511 N., RFD 3,
 Ashland, Ohio 44805