

# Kinze Expands Cultivator Line

WILLIAMSBURG, Iowa — A new line of hydraulic-folding conservation cultivators specifically built to meet the challenges of today's tough crop residue management systems is now available from Kinze Manufacturing Inc.

The Kinze 1500 Conservation Cultivators are available in seven hydraulic-folding models designed to create efficient erosion control and moisture conservation without sacrificing protective cover.

The high-performance units enable operators to work in mulch-till, ridge-till, no-till and even conventional-till conditions at speeds of up to twice as fast as conventional cultivation equipment. The new folding units complement an existing 1500 rigid-frame series which also has been expanded to include sizes ranging from 4-row to 10-row N.

The backbone of the Model 1500 is a sturdy 7-inch x 7-inch x 3/8-inch tubular frame that provides the penetrating strength needed for high-residue conditions. The center section on the largest units (12-row " and 16-row N) is also equipped with an additional 3-inch x 7-inch forward toolbar for added strength and stability. The folding wings on the Model 1500 have unlimited up-flex and 5-degree down-flex. Stop bolts on the hinge assembly allow the operator to limit down-flex, or pin the wings for rigid operation. All units have crop clearance of 30 inches.

Heavy-duty parallel linkage allows the row units to independently ride up and down over uneven terrain with up to 10 inches of vertical movement and yet maintain rigid side-to-side alignment which is critical when working closely to the row. Four quick-adjustable coil springs control down-force

pressure, providing maximum weight transfer for uniform penetration in all soil types.

Each row unit is equipped with adjustable 18-inch diameter coulters (with scrapers) that slice through heavy residue and open a path for the shank. Replaceable bolt-on shank points break up compacted soil layers for increased water infiltration and enhanced aeration.

Reversible and replaceable double-edge shares, available with regular or Kinze's new hard surface cutting edges, are available in 17-inch, 19-inch, 21-inch, 25-inch, and 27-inch sizes. The shares are angled to cut below the surface of the soil to remove weeds and grasses at root level without disturbing protective soil cover.

The units can easily be equipped to apply liquid fertilizer or anhydrous ammonia. The optional liquid fertilizer package is set up with a John Blue L-4405 piston pump, flow divider, and spring loaded drive wheel. Fertilizer tubes are preinstalled on the shanks for immediate or future applications. The optional anhydrous attachment includes heavy-duty 1 1/4-inch square spring coil shanks with quick-clamp knife mounts for customer-supplied knives. Other options include ridging attachments, rolling disc or rotary hoe crop shields, cut-away weeding discs, dual lift assist wheels, and a rear telescoping hitch assembly.

## Better Living Foundation Starts Fundraising Efforts

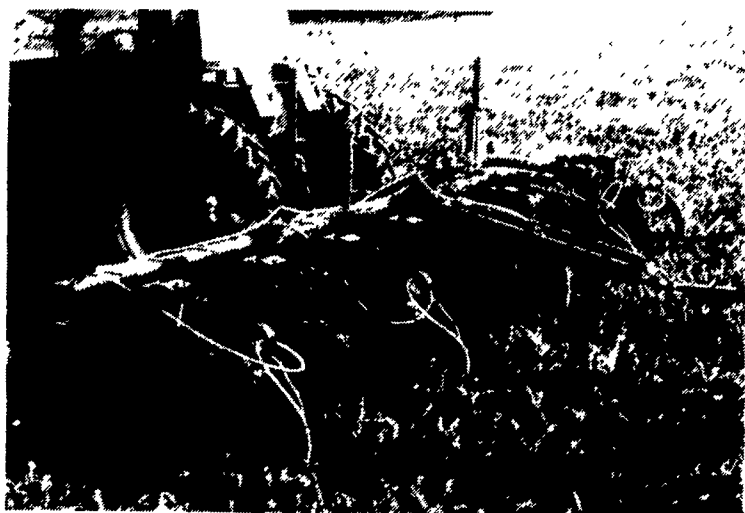


Margaret Wolff, left, is honorary chairperson for the fundraising effort started during the Farm Show by the Pennsylvania Foundation for Better Living. Patty McMurry, a director of the Dairymen's Association presented a check for \$2,500 to Mrs. Wolff in support of the mission of the foundation.

In 1992 the foundation hosted a four-day teacher's workshop for 45 teachers to increase the understanding of the relationship between agriculture and the consumer and the economy. This summer two workshops are planned to accommodate 100 elementary teachers.

Christine Jacobs, a kindergarten teacher and a graduate of last summer's workshop explained how she incorporates the information she learned into her regular curriculum. She also has shared her knowledge and teaching materials with other teachers in her school.

In addition to the workshops, the foundation has established a speakers' bureau and provides teaching materials and follow-up support for teachers. For more information or to make a contribution to the Pennsylvania Foundation for Better Living, write Beth Moore, executive director, at 5399 Guitner Road, Chambersburg, PA, 17201. Or phone: (717) 375-2639.



The Kinze 1500 Conservation Cultivators are available in seven hydraulic-folding models designed to create efficient erosion control and moisture conservation without sacrificing protective cover.

### BEANS & CORN TOO CHEAP?

Grow them without toxins and get \$8.00 to \$12.00 per bu. for soybeans and \$3.00 for corn, guaranteed. You can do it this year yet Others have been doing it for 12 years and are very happy. You are just as smart, but you are not getting paid for your smartness.

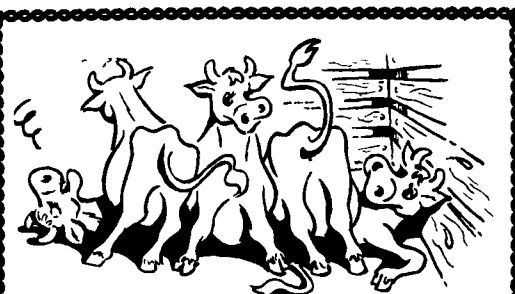
We need beans by the semi-loads from many farmers for tofu and soy milk factories. We can't get enough. And corn even more for the smart dairymen who learned the great value of it. Their cows do better with it. Protein and minerals are very high and in good balance, better than a computer can do it.

One of our excellent blends, the SK blend, is only \$116 per ton. Ask for a detailed description of our program.

### ORGANIC CENTER

217 S. RAILROAD AVE.  
NEW HOLLAND, PA. 17557

717-354-7064 7 to 8 AM Mr. Stoltzfus



**NEED MORE ROOM?**  
Read The Real Estate Ads  
In Lancaster Farming's  
Classified Section

BUY, SELL, TRADE OR RENT THROUGH THE

## CLASSIFIED ADS

PHONE: 717-826-1164 or 717-394-3047  
FAX 717-733-6058

Mon., Tues., Wed., Fri. 8 AM to 5 PM; Thurs. 7 AM to 5 PM

### 1 FARM EQUIPMENT

1000 gal. Badger vacuum tank, excellent condition Union County, (717)966-1998

1020 JD Danhusher Post Digger, 7'cut mower, JD M.T. runs, JD spreader, flatbed 16', 301/596-9723, 410/442-2817

Shaver Post Drivers HD8 \$1095, HD10 \$1595 Taneytown Farm & Hardware, 410/751-1500

1650 Oliver Gas w/1210 Oliver Loader, WFE, PS, Hydro Power, Priced to Sell \$2500 804-824-4319

WANTED: Litter pans for NH spreaders: 519, 520, 679, 680 717-949-3074 or 703-879-9926

1945 JD LA; 1939 JD A. Both good condition. 1945 JD LA, fair condition; 1970 Case 310G, track loader, very good condition. 412-548-5996 after 6PM.

1972 JD 4620 tractor, 4646 hrs., dual wheels, 1000 RPM PTO. Field ready \$11,000 (410)836-2398 evenings

12" Oliver plow w/new mold boards, landslides, etc. \$495; JD 9' spring harrow, reconditioned, \$450, JD KBA disc harrows, 20 or 24 blades w/new 20" blades, pivots, etc. \$750/ea; 3&4 foot roller harrows \$200/ea; 9'-12' cultipackers made to order, \$250-\$350/ea; NH 401, 402 crimpers; NH 455 mowers; NH 55 rakes. All equipment field ready and guaranteed Farm equipment parts in stock, bearings, bolts, sprockets, pulleys, belts, PTO parts, etc 10% sale on parts January 15 to March 15 KIRKWOOD REPAIR SHOP, 550 Coopers DR, Kirkwood, PA 17536 717-529-3299 Call between 8-8 30AM



## Martin Concrete

Subsidiary of Martin Paving, Inc.

CONCRETE MIXED AT JOB SITE

METERED DELIVERY

PAY ONLY FOR WHAT YOU USE!



No Waste - We Mix Any Amount  
You Need - Mixes Can Be Changed Right On The Job

Mon. Thru Sat.  
Delivery  
P.O. Box 446  
Ephrata, PA

STATE APPROVED DUST OIL FOR BARN YARDS, FARM LANES, ETC.

Ephrata: (717) 733-7915  
Lititz: (717) 626-2494  
Lebanon: (717) 272-7541