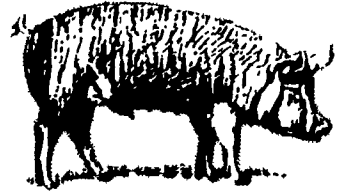
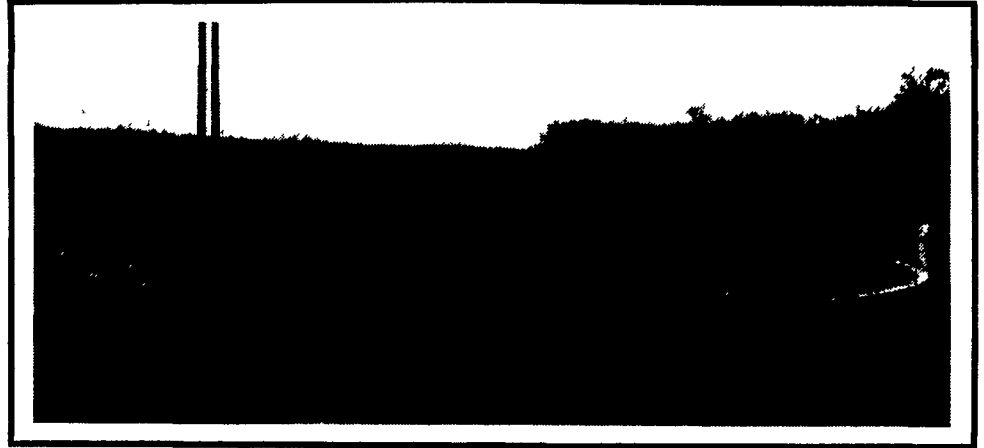


THANK YOU to LARRY & GEORGIA FRY For Choosing **TRI-COUNTY** To Build Your NEW 200 SOW FEEDER PIG UNIT



Turnkey Construction Featuring **aerotech** Engineered Ventilation System; **GSI** Bins And Augers; **TRI-COUNTY** Gestation Stalls, Penning And Farrowing Crates; **HOB SLAT** Concrete Gang Slats; Stainless Steel Nursery Feeders

Concrete In-Ground Manure Pit With Chain-Link Fence For Years Of Reliable Service. **TRI-COUNTY** Can Construct All Types And Sizes Of Concrete Storage Structures To A.S.C.S. Specifications. **CHECK OUR PRICES BEFORE YOU BUY!**

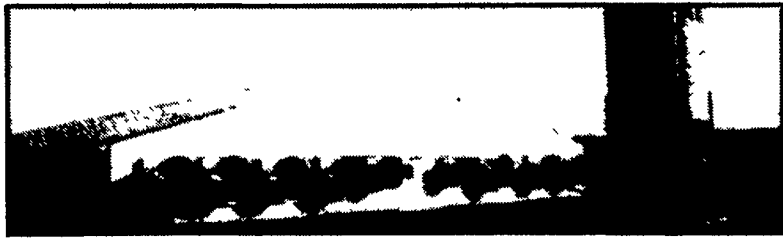
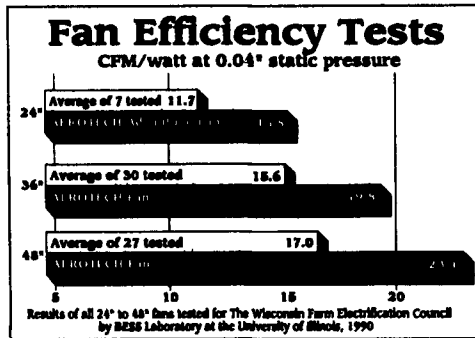


CONTRACTS ARE AVAILABLE

For 200-1200 Sow Units... We Can Assist You With Cash Flow Projections, Financing And Contracts.

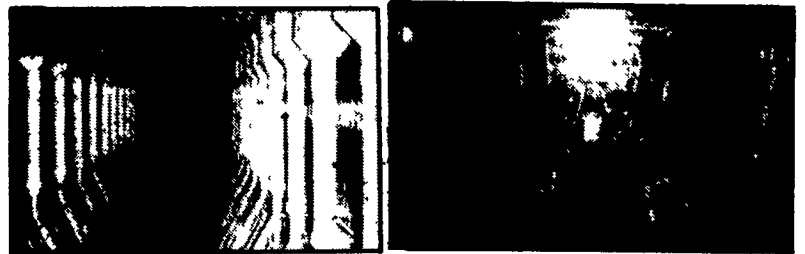


aerotech Ventilation Systems



Let **TRI-COUNTY** Design A Ventilation Or Feed System For You!

GSI Bin And Auger Systems



TRI-COUNTY
CONFINEMENT SYSTEMS, INC.

608 E. Evergreen Rd.
Lebanon, PA 17042
717-274-3488



WE SHIP
UPS DAILY

Hours: Mon-Fri 7:00 - 4:30 Sat 9:00 to 12:00