

- \* 18' truck body w/lift gate used for furniture \$1,200
- \* 1973 Kenworth 350 Cummins, 15 speed, Jake brake, wet line, new paint, conventional cab, \$6,900
- \* 1965 International tractor R220, single axle, 40,000 on brand new in-crate 501 motor, \$1,500
- \* Onan generator 9500 watts, \$500
- \* Case Load King front end loader, needs minor work, \$5,000
- \* 1978 Ford F600 mechanically A-1, \$750
- \* 18' AMF Crestliner fiberglass boat on trailer, 65 hp Johnson motor, needs some minor fiberglass work, \$450
- \* 2 portable scales, brand new, make offer
- \* '48 Dodge 2-door, runs great, \$700
- \* '56 Ford, 2-door, registered antique, \$2,500
- \* '69 Caddy Fleetwood, original 60,000 miles, runs like new, \$700
- \* '79 Mercedes 280SE, needs work, \$1,500

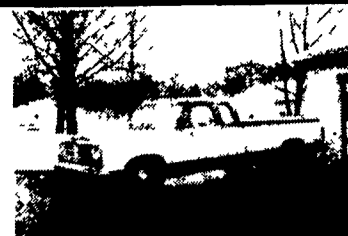
(215) 934-6414

1982 Freuhauff 45' Flat Bed - Sliding Tandems - Aptlong Floor - Welded D.O.T. Head Board - 10.00 - 20 - Bias on Dayton Type Wheels - Set up to Haul Portable Forklift - Trailer is in good shape and ready to go to work for you - \$4800.00\*O.B.O.

Contact Chris At  
**(800) 331-9953** or  
**(410) 755-6737**

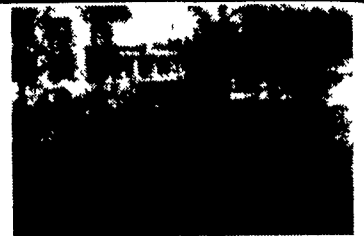


**Skid Mounted Centrifugal Irrigation Pump** Gorman Rupp  
1989 4' 1,050 GPM, at 2000 RPM for 100 PSI, Head Pressure, Detroit Diesel, 353 Power, Good Condition  
**\$2,250**  
**516/643-6644**



1990 Dodge 250 3/4 Ton Club Cab, 318 EFI, Auto, PS, PB, Air, AM-FM, 7400 GVW, Michelin Radials, 11,000 Miles, Red & White, Like New.

**\$11,900**



1988 Ford F150 Super Cab, 300 EFI, 5 Speed, PS, PB, AM-FM Dual Tanks, 6250 GVW 45,000 Miles, Dark Blue

**\$8,350**



87 Chevy C10 4x4 305 FI, Auto, PS, PB, AM-FM Cass., Rally Wheels, 49,000 Miles, 1 Owner, Red

**\$8,600**



1990 Chevy Beauville Extended, 11 Pass., 350 FI, Auto, PS, PB, PW, PDL, Cruise, Tilt, Dual Air, AM-FM Cass., 29,000 Miles, Charcoal

**\$13,500**

**A&J Auto Sales**

798 E. Main St., Rt. 322 East, Ephrata, PA 17522  
**717-733-2873**

Trailer Hitches  
Brake Controllers  
Pintle Hooks  
and Much More!  
\* Free Catalog \*  
Free UPS/Credit Cards  
Weaver Distributing  
1-800-Weaver-D

**MOTORS**  
New & Rebuilt  
350, 366,  
427, 454

6.2 Diesels  
Rebuilt & Used  
Will Install  
Roll Back Service  
(at cost)  
717-762-6415

**Bittner Boys, Inc.**  
Quality Chevy V8  
Motors for Cars,  
Trucks and Boats.  
We Install And  
Deliver.  
35 Years Of  
Experience  
717/762-7940

**E-TOWN DODGE**

- NEW 1993 Dodge W-250 Club Cab Diesel In Stock
- 1991 Jeep Cherokee Briarwood, Like New
- 1989 Dodge W150 4x4 Short Bed, Like New
- 1989 Chevy C-1500, 27,000 Miles
- 1992 B-350 Maxi Wagon, 15 Passenger, 20,000 Miles
- (4) 1993 Diesels In Stock

CALL MILTON HESS  
717-367-6644  
717-653-6667  
Elizabethtown, PA

**JONES BEST BUY USED TRUCKS**

**JONES**  
**PONTIAC • HONDA**  
**GMC TRUCK**  
1335 Manheim Pike, Lancaster  
**394-0711**

 <b>'87 CHEVY S-10 PICKUP</b> V6, AT, AC, Tahoe, #7237 Was \$8,995 <b>NOW \$7,150</b>	 <b>'86 CHEVY 4x4 PICKUP</b> Silverado, AT, AC, Lift Kit #7281 Was \$8,995 <b>NOW \$6,450</b>	 <b>'87 GMC 4x4 PICKUP</b> V8, AT, Runs Great #7276 Was \$8,995 <b>NOW \$6,700</b>	 <b>DIESEL</b> <b>'89 GMC CONVERSION</b> Choo Choo Custom, AT AC, TV, VCR, Almost New Was \$18,995 <b>NOW \$15,100</b>
 <b>'84 CHEVY SUBURBAN</b> Silverado, 350, AT, AC, 9 Pass., PW, PL, Trailer Pkg. #7178 Was \$7,900 <b>NOW \$5,300</b>	 <b>'86 PLYMOUTH VOYAGER</b> 7 Pass., AT, AC, 212,000 Mi., Runs Great #7277 <b>SPECIAL</b> <b>NOW \$2,200</b>	 <b>'89 GMC 1/2 TON 4x4 CREW CAB</b> 350, AT, AC, Sierra Classic, Only 40,000 Mi., #7736 Was \$16,995 <b>NOW \$14,550</b>	 <b>DIESEL</b> <b>'88 CHEVY 1/2 TON</b> Silverado, AT, AC, Cruise, Tilt, Loaded #7165 Was \$13,995 <b>NOW \$12,150</b>
 <b>'89 FORD AEROSTAR XL</b> V6, AT, AC, 7 Pass., #7266 Was \$10,995 <b>NOW \$8,850</b>	 <b>'85 CHEVY 4x4 PICKUP</b> Silverado, Short Bed, V8, AT, AC, Loaded, #7228 Was \$8,495 <b>NOW \$7,150</b>	 <b>'92 GMC 1 TON EXTENDED CARGO VAN</b> 350, AT, AC, PL, Cruise, Tilt, #7206 Was \$19,300 <b>NOW \$13,900</b>	 <b>DIESEL</b> <b>'90 CHEVY K-BLAZER 4x4</b> AT, AC, Cruise, Tilt, Loaded, #7184 Was \$18,100 <b>WAS \$16,100</b>
 <b>'93 GMC CREW CAB 4x4</b> 454, AT, AC, Dual Wheels, Trailer Pkg. #1415 Was \$29,374 <b>NOW \$27,844</b>	 <b>'89 FORD F-250 4x4</b> V-8, 5 Spd., AC, Super Clean, #7267 Was \$12,995 <b>NOW \$10,750</b>	 <b>'85 FORD F-150</b> V6, 5 Spd., Great Work Truck, #7240 Was \$4,995 <b>NOW \$3,500</b>	 <b>DIESEL</b> <b>'90 CHEVY 4x4</b> Silverado, AC, 4 Spd. w/OD, Loaded, All The Toys, 22,000 Mi., #7251 (File Photo) Was \$16,995 <b>NOW \$14,800</b>
 <b>'92 GMC SAFARI SLX</b> V-6, AT, AC, 8 Pass., Factory Vehicle, #7261 Was \$15,995 <b>NOW \$13,300</b>	 <b>'88 CHEVY SUBURBAN 4x4</b> "Woody" Conversion, 8 Pass., All The Toys, #7256 Was \$16,400 <b>NOW \$13,850</b>	 <b>'90 FORD RANGER 4x4</b> V-6, 5 Spd., AC, Almost New, #7271 Was \$11,900 <b>NOW \$9,850</b>	 <b>'86 FORD F-250 4x4</b> HD, V-8, AT, Ready To Go, #7246 Was \$8,995 <b>NOW \$7,250</b>

Prices based on straight sale. Tax & tags extra.