

Oklahoma City Feeder Cattle

Oklahoma City
 Wednesday January 13, 1993
 ATTN: DODGE CITY
 OKLAHOMA NATIONAL STOCK-
 YARDS WEEKLY CATTLE
 SUMMARY

Compared to last week: Feeder steers over 650 lbs. steady. Heifers over 600 lbs. \$1.00-\$1.50 higher. Lighter weight cattle steady to \$2.00 lower. Yearling demand good. Feeder quality equivalent to last week, average to attractive. Yearling flesh highly varied with majority of feeders ranging from slightly thin to moderately fleshy. Calf demand moderate to good. Weather cold and wet and this took some of fire out of calf prices. Also calf condition not as hard and thin as last week with increased percentage of short term weanec calves. Weigh conditions more attractive to buyers than last week and gaunt to average. Slaughter cows and bulls steady to \$1.00 higher. Good demand for both classes. However, orders from different packers seemed to change daily; normal cow supplies disrupted by bad weather in some destination areas. Receipts this week 8,000; last week 5,500; last year 9,628 head. Run 69% yearlings or big calves over 600 lbs.; 26% calves under 600 lbs.; 5% cows and bulls. Bulk price ranges follow;

weighted averages in parenthesis.

Feeder Steers: Medium and Large Frame 1, 300-400 lbs. \$105.25-\$114.50 (\$111.03); 400-450 LBS. \$102.50-\$111.50 (\$107.36); 450-500 lbs. \$96.25-\$105.00 (\$99.70); 500-550 lbs. \$94.75-\$98.50 (\$96.85); 550-600 lbs. \$89.00-\$96.00 (\$91.32); 600-700 lbs. \$87.00-\$92.00 (\$89.68); 700-800 lbs. \$85.50-\$89.25 (\$87.67); 800-900 lbs. \$84.00-\$88.25 (\$85.80); 900-1000 lbs. \$80.00-\$85.50 (\$82.91). Large frame 2 Holsteins, 400-425 lbs. \$79.25-\$82.50 (\$81.89); 500-600 lbs. \$74.25-\$76.25 (\$75.64); 700-800 lbs. \$68.75-\$69.75 (\$69.00); 800-850 lbs. \$69.00-\$73.25 (\$71.20); 900-950 lbs. \$65.50-\$67.25 (\$66.32).

Feeder Heifers: Medium and Large Frame 1, 300-400 lbs. \$91.50-\$99.50 (\$97.91); 400-450 lbs. \$89.00-\$97.00 (\$91.63); 450-500 lbs. \$84.50-\$87.00 (\$86.34); 500-600 lbs. \$83.25-\$86.00 (\$85.20); 600-700 lbs. \$84.00-\$88.00 (\$85.81); 700-750 lbs. \$82.25-\$87.00 (\$85.17); 750-800 lbs. \$81.00-\$85.75 (\$83.64); 800-850 lbs. \$81.75-\$84.25 (\$83.47); 850-900 lbs. \$79.75-\$81.00 (\$80.21).

Slaughter Cows: Cutter, Boning Utility, and Breaking Utility Y.G. 1-4, average dressing \$47.50-\$50.75; high dressing \$50.00-\$52.50, very high \$53.00-\$55.00; low dressing \$43.50-\$47.50. Canner \$37.50-\$43.50.

Slaughter Bulls: Y.G. 1 1275-1675 lbs. average dressing \$57.75-\$61.75; high dressing \$62.75-\$66.00. Y.G. 1-2 1075-2150 lbs. low dressing, fleshy or thin \$53.75-\$56.25.

WORK HORSES: ILLINOIS, PAIRS 1676.00-2200.00, SINGLES 985.00-1200.00; VIRGINIA, PAIRS 1900.00-3200.00, SINGLES 1100.00-1375.00; MICHIGAN, PAIRS 1300.00-2075.00, SINGLES 800.00-950.00; TENNESSEE, PAIRS 2700.00-3300.00, SINGLES 1250.00-1425.00; VIRGINIA, PAIRS 2500.00-2800.00, SINGLES 925.00-1550.00; TENNESSEE, PAIRS 2000.00-3100.00, SINGLES 1100.00-1300.00.

1050.00-1475.00; TENNESSEE, PAIRS 2250.00-3900.00 AND 2150.00-2500.00.

DRIVING HORSES: PENNSYLVANIA 975.00-1900.00; CANADA 825.00-2400.00; NEW YORK 1150.00-1310.00; PENNSYLVANIA 900.00-1500.00; KENTUCKY 900.00-1400.00; OHIO 900.00-2050.00.

LOCAL DRIVING: 735.00-1500.00; LOCAL WORK, PAIRS 1500.00-2400.00, SINGLES 760.00-1650.00; LOCAL MULES, PAIRS 1975.00-2150.00, SINGLES 875.00-1350.00; FEW PONIES 265.00-470.00.

Special Sale Work and Driving Horses, Mules

New Holland Sales Stables
 New Holland, PA
 Friday, Jan. 8, 1993
 Report Supplied by Auction
 355 HEAD.

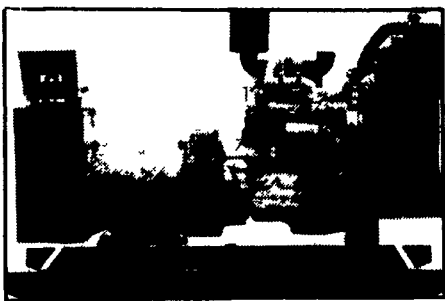
MULES, VIRGINIA, PAIRS 2400.00-3100.00, SINGLES

KEYSTONE CONCRETE PRODUCTS INC.

477 East Farmersville Rd.
 New Holland, PA 17557

"WAFFLE SLAT"
 Syn Con Corporation

GENERATORS



AUTOMATIC and MANUAL SYSTEMS

DIESEL
 L.P. GAS
 NAT. GAS
 NEW & USED



LEROY SOMER PTO ALTERNATORS

BRUSHLESS
 INDUSTRIAL GRADE
 11 to 60 KW

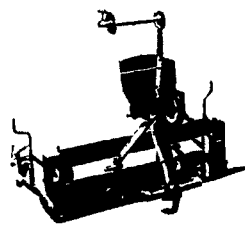
READY FOR THE NEXT STORM?

For Sales and Service Call The People Who Know Generators

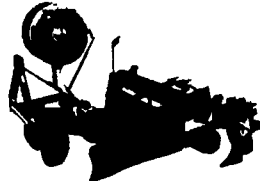
MARTIN ELECTRIC PLANTS

280 Pleasant Valley Rd., Ephrata, PA 17522-8620
 Tel: 717-733-7968 Fax: 717-733-1981

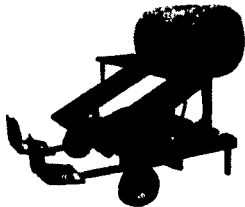
VEGETABLE GROWING MACHINERY



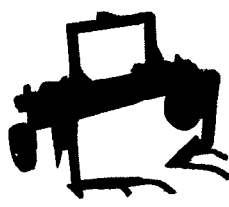
FLAT BED MODEL 560 PLASTIC LAYER



RAISED BED MODEL 2500 PLASTIC LAYER



MODEL 1400 WATER WHEEL TRANSPLANTER



CHALLENGER MODEL 1800 PLASTIC LIFTER

Mfg. of Vegetable Machinery - We Stock The Following Supplies: Plastic Mulch, Drip & Overhead Irrigation, PTO, Engine & Submersible Pumps, Greenhouse Supplies & Plastic, Aluminum & PVC Pipes & Fittings, Layflat Hose, Harvesting Baskets, Emitters & Orchard Drip Systems, Sand, Disk & Screen Filters, Auto or Manual Backwash.

This is Only A Partial Listing.

"Let Our Experience Help You With Designing Your System"
 Call Or Write For Free Catalog



RAIN-FLO IRRIGATION

884. Center Church Rd., East Earl, PA 17519
 (215) 445-6976

Slatted Beef Barn

Slatted Heifer Barn

Slatted Hog Barn

Bunker Silos

Precast Concrete Bunker Silos. Available In T-Wall Or A-Frame Panels

Other Products:

- H&J Bunks • Hog & Cattle Slats
- Concrete Hog Penning • Concrete Post & Beam • Bunker Silo

Give us a call for more information on hog, beef, dairy and heifer barns