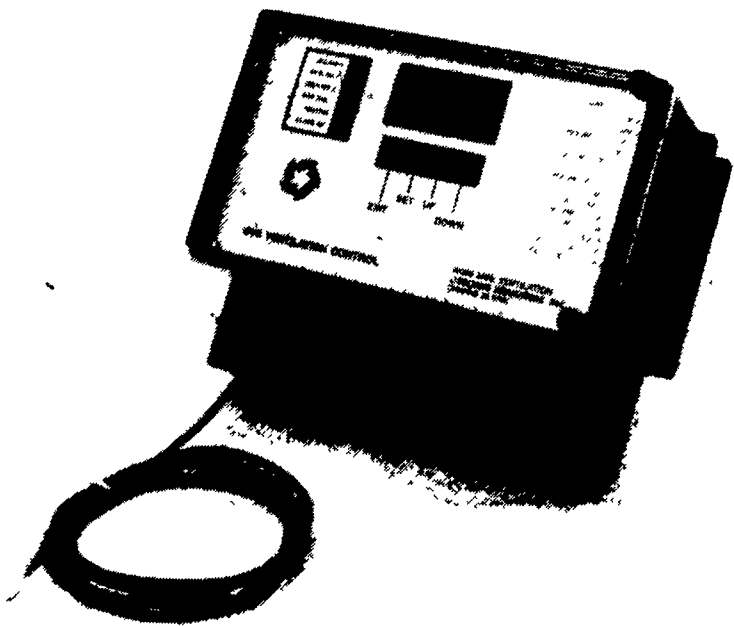


Business News



Osborne Industries, Inc., announces the availability of its new "Climate Commander™, Version 1.0" PC program for remote computer management of barn climate in up to 32 separate locations with its Model CV5 microprocessor-based controls.

Program Offers Remote Climate Control

OSBORNE, Kan. — Osborne Industries, Inc., announces the availability of its new "Climate Commander™, Version 1.0" PC program for remote computer management of barn climate in up to 32 separate locations with its Model CV5 microprocessor-based controls.

The user can view current room temperature and operation of the CV-5 controls and can change control settings and diagnose equipment operating condition from the remote PC. The program can also be used to collect and store a data base of climate information for later study (for example, comparison to feed efficiency, rate of gain, etc.). Climate Commander is available in either 3.5 or 5-inch disk format.

Each CV5 control provides four stages of ventilation control and one stage of heater control for a fully coordinated climate. The CV5 accepts either 120 or 240 V AC input and features a watertight enclosure, a digital temperature display, and a dual sensor option for more accurate room temperature measurement. The first two CV-5 stages control variable-speed fans and the second two,

full-speed fans. Each stage controls up to 10 amps of fan load without added external relays. All stages are interlocked with the heater stage.

Additional CV-5 features include variable span for the rate of RPM change with temperature for the two variable-speed stages, low temperature auto-off, a vent/cool option so fans run at minimum speed or stop at or below system set-point as needed, and Osborne's unique Power-Up™ feature that starts fans at full horsepower before idling back to control speed. Nonlinear fan performance is automatically corrected by the CV5 microprocessor for optimum controllability.

The CV5 is the first wholly U.S.-designed and manufactured microprocessor-based controller for livestock ventilation. The CV5 and the Climate Commander™ program are warranted against defects in materials and workmanship for one year.

More information about the CV5 and the Climate Commander program is available through any Osborne Dealer or by calling Osborne Customer Service, Osborne Industries, Inc., Osborne, KS, 67473, 1 (800) 255-0316.

Pullins Appointed Manager

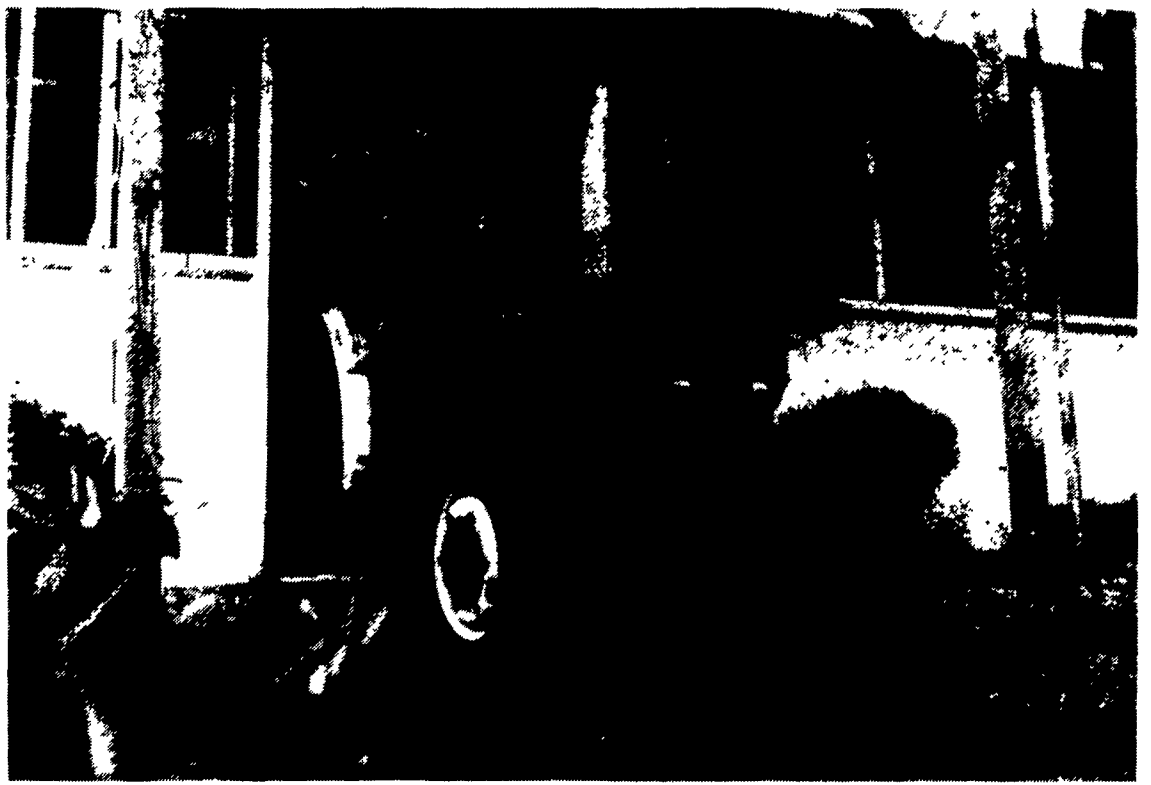


James J. Pullins

HALL, N.Y. — Donald P. Wertman, CEO, announces the appointment of James J. Pullins as commercial vegetable seed business manager.

Pullins will be headquartered at Elizabethtown, Pa. vegetable seed plant and be responsible for the newly consolidated Agway and Seedway vegetable seed business under Seedway management. He will have overall responsibility for management and future development of the vegetable seed business in the eastern United States and Ontario, Canada.

Pullins has 25 years experience in agricultural sales, territory, and



"Bred for vineyard work" is Ford New Holland's description of the four new Ford narrow-tread tractors available in both 2WD and 4WD. Two 12-speed transmissions, synchronized shuttle shift, Category II 3-point hitch, and independent PTO are standard.

Narrow-Tread Tractors From Ford New Holland

NEW HOLLAND (Lancaster Co.) — Four new narrow-tread Ford tractors are designed for work in orchards, vineyards, hop yards, nurseries, and other locations where work space is limited.

The new tractor range includes the 45 PTO HP Model 3830, the 51 PTO HP Model 4030, the 62 PTO HP 4230, and the PTO HP Model 4430. The three smallest models are available in either two- or four-wheel-drive. The Model 4430 is equipped with four-wheel drive only.

A 3-cylinder 165 CID diesel

powers the 3830. The 4030 is powered by a 179 CID diesel, the 4230 by a 220 CID diesel, and the 4430 by a 238 CID diesel.

All models are available with either 12 x 4 or 12 x 12 transmissions with synchronized mechanical shuttle shift. Both transmissions have three ranges of four synchronized gears. Wrap-around fenders minimize plant and vine damage. Telescoping steering wheels and foldable ROPS allow low-clearance work. Tight turning radius adds maneuverability.

"These tractors were bred for

vineyard work," said Product Manager Dave Dell. "They're the right choice where growers need a lot of power in a small space. They're narrow but they have excellent stability because of a low center of gravity."

The new narrow tractors feature Category II 3-point hitch and independent PTO: 540 RPM for the 3830 and 4030 and 540/1000 RPM for both 4230 and 4430. Working width of the 3820 is 49 inches. Minimum working width of the other three tractors is under 58½ inches.

Hoffman Seeds Releases New Soybean Varieties

LANDISVILLE (Lancaster Co.) — Hoffman Seeds has introduced two soybean varieties for 1993.

An Early Group III variety, 3311 emerges rapidly for good canopy development to help prevent weed growth. It has shown documented yields of more than 100 bushels per acre. Moderate branching makes 3311 adaptable both to wide row and solid seeding. It is recommended as a full-season variety.

A Late Group III variety, 3388 produced 46.2 bushels per acre yields in the stress environment of 1991. It will perform in cyst or non-cyst environments. 3388 also features fast emergence with good shattering resistance to minimize field losses. It is resistant to a number of diseases including race 3 and 4 of soybean cyst nematode, brown stem rot, and phytophthora.

Both varieties are available in a Value Pak®, which contains 54 units of a single variety.



Hoffman Seeds has introduced two soybean varieties for 1992. An Early Group III variety, 3311 emerges rapidly for good canopy development to help prevent weed growth. A Late Group III variety, 3388 produced 46.2 bushels per acre yields in the stress environment of 1991. Both varieties are available in a Value Pak®, which contains 54 units of a single variety.

Frame Builders To Meet In Carlisle

UNIVERSITY PARK (Centre Co.) — What's new in design? This is just one of many topics that Pennsylvania builders will be discussing at the 12th Annual Pennsylvania Frame Builders Conference to be held at the Embers Con-

vention Center in Carlisle on Wednesday, Feb. 17 and Thursday, Feb. 18.

vention Center in Carlisle on Wednesday, Feb. 17 and Thursday, Feb. 18.

The conference is sponsored annually by Penn State's agricultural and biological engineering department.

Other topics to be discussed include dairy and swine buildings for the 1990s; using unit masonry; preservative treated lumber; what is ADA, E & S and Level II any low?; glulam use and handling;

striving for quality work; safety on the job site; and building a professional construction team.

For more information and to register for the Pennsylvania Frame Builders Conference, contact the Penn State Cooperative Extension office in your county or write to Pennsylvania Frame Builders Conference, 306 Agricultural Administration Building, University Park, PA 16802, (814) 865-8301.