

ROLLING ON...IN THE 90's



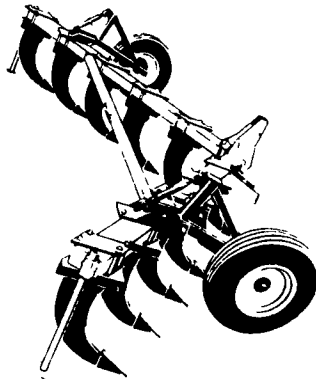
MEETS THE CHALLENGE

The "Quality Crafted" Line

Better Seedbeds...Better Stands!

SUB-SOILERS

The husky, curved shanks of the Sub-Soiler dig down as deep as 16 inches, shattering compacted layers of plow sole and lifting the hardpan while it is being broken. 3, 5, 7, 9, 11 shanks.

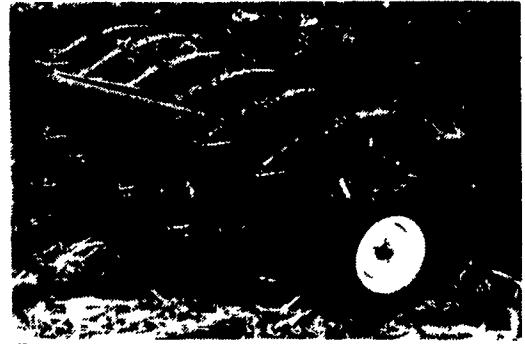


3-SHANK DEEP TILLS

The three shank model, shown above, has a Category II hitch. With a cutting width of 7'6", it is ideal for operators with smaller acreages and horsepower. It is extremely maneuverable, yet provides the same basic deep tilling job as its "big brothers" 3, 5, 7 shanks.



7 SHANK DEEP TILLS



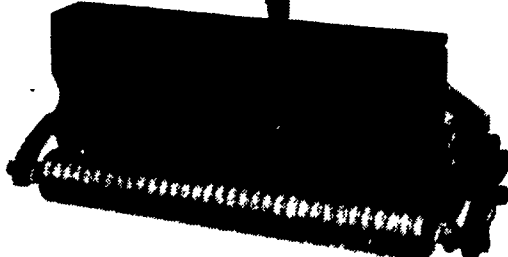
The 7 shank model shown here, as well as the 5 shank model, has a Category III hitch. This model is equipped with single individual trash cutting coulters and cuts a 17'6" width. It uses manual gauge wheels.

SS8, SS10 & SS12 SEEDERS



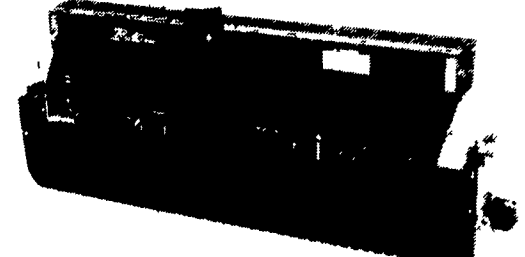
Box size over 4 bushels. A simplified drive system allows for seeding rates up to 50% greater than previous models. A heavier drawbar and frame was designed for use in more rugged conditions. Available in 8, 10 & 12 ft. models. Lift type and 8, 10 & 12 ft. Hydraulic Transport Model.

LANDSCAPE SEEDERS



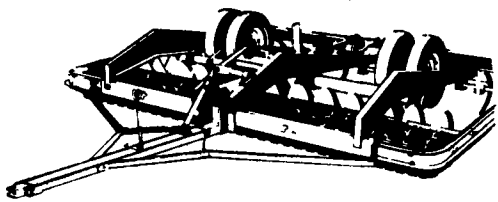
Like the larger models, the 5'4" crushes, seeds and rolls in one operation, tucking seeds in the top 1/4" of the soil...in a firm, clod-free seedbed that gives thick, even stands at greatly reduced seeding costs. The shallower seeding depth is just right for controlled moisture and growth conditions.

TURF MAKER SEEDERS



This Brillion specialty seeder utilizes the same world famous seeding method made popular by the "Sure-Stand" agricultural model grass seeder. Variations in seedbox capacity and seed metering mechanisms make this the ideal seeder for special requirements of professional landscapers, turf and sod raisers, 8 & 10 ft., 3 pt. or pull type.

M-MD PULVI-MULCHERS



The Brillion Pulvi-Mulcher converts fall or spring plowings into clod-free, high yield seedbeds. Just flick the tractor hydraulic control pulvi-mulcher lifts to transport wheels. Available in 7'4", 10'4", 12'4", 13'8" and 15'.

ML SERIES PULVI-MULCHERS

SERIES 03 - Built to last

- Easy rolling 20" ductile iron notched or crowfoot roller wheels with a 5 year limited warranty.
 - Longer life external mounted bearings.
 - Longer, heavier drawbar for shorter turns.
- Available 12'6", 13'10", 15'2" & 18'9"



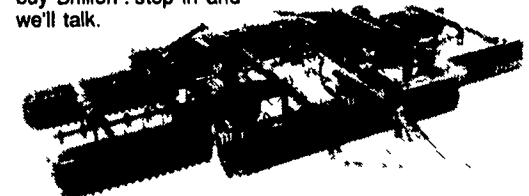
There's lots more reasons to buy Brillion... stop in and we'll talk.

WL SERIES PULVI-MULCHERS

SERIES 03 - Built to last.

- Easy rolling 20" ductile iron notched or crowfoot roller wheels with a 5 year limited warranty.
- Longer life external mounted bearings.
- Longer, heavier drawbar for shorter turns.

There's lots more reasons to buy Brillion... stop in and we'll talk.



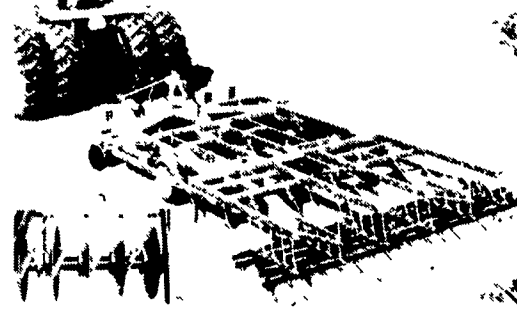
Available 21'8", 25' & 30'

SOIL BUILDERS



SOIL BUILDERS. Coulter gang can be hydraulically controlled to save maintenance dollars. 5, 7, 9, 11 & 13 shank. Available in 2 & 3 bar.

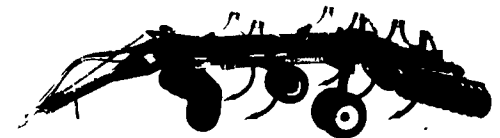
SOIL GROOMERS



Main illustration shows 12-foot Soil Groomer with spike drag harrows. Insert photo shows disc arrangement with 18" dia. discs that move soil inward to reduce ridging. Scrapers are adjustable. 12 to 30 ft.

LANDCOMMANDER

Controls compaction, rough fields, soil erosion & residue management problems. Adjustable front disc gangs cut the residue. Auto-reset shanks penetrate the soil 8 to 20" to breakup compaction. The rear discs break clods, incorporate residue and level fields. To leave more surface residue and control erosion, raise the gang. Easy manual or hydraulic adjustments change disc cutting depth. Now there's one way to manage surface residue and compaction problems... stop in and we'll talk.



FOR MORE INFORMATION... CONTACT YOUR BRILLION DEALER

PENNSYLVANIA

Adamstown
ADAMSTOWN
EQUIP. INC.

Bechtelville
MILLER
EQUIP. CO.

Berwick
C.H. RINEHIMER
& SONS

Carlisle
GUTSHALL'S, INC.

Dover
GEORGE N.
GROSS, INC.

Easton
GEORGE V.
SEIPLE

Elizabethtown
MESSICK FARM
EQUIPMENT CO.

Gettysburg
YINGLING
IMPLEMENT

Intercourse
C.B. HOOBER
& SON

Lancaster
LANDIS
BROTHERS, INC.

Lebanon
UMBERGER'S
OF FONTANA

Loyville
GUTSHALL'S, INC.

Lynnport
KERMIT K.
KISTLER, INC.

Maxatawny
N.H. FLICKER &
SONS, INC.

Needmore
CLUGSTON
FARM EQUIPMENT

New Holland
A.B.C. GROFF, INC.

Oley
PIKEVILLE
EQUIPMENT, INC.

Quarryville
GRUMELLI FARM
SERVICE

Tamaqua
CHARLES
SNYDER, INC.

Watertown
DEERFIELD AG &
TURF CENTER, INC.

West Grove
S.G. LEWIS &
SON, INC.

MARYLAND

Frederick
CERESVILLE FORD
NEW HOLLAND

Rising Sun
AG INDUSTRIAL
EQUIPMENT

NEW JERSEY

Bridgeton
LESLIE FOGG

Elmer
POLE TAVERN
EQUIP.
SALES CORP.

Columbus
REED BROTHERS
EQUIPMENT

Fairfield
CALDWELL
TRACTOR &
EQUIPMENT.