



Telephone: (717)866-6581



701 E. Linden St., RICHLAND, PA 17087



In the summer of 1954, the Shirk family began to manufacture laminated wood rafters in their home in Myerstown, Pennsylvania. Before and after school, several sets of rafters were glued and clamped together in the basement of their house. In time, the family felt that the business needed a name which was truly descriptive of the quality product that they were producing. The name Rigidply Rafters was established in 1954 by Chester F. Shirk, owner and operator of this contracting company.

In the years that followed, a number of changes and challenges occurred. 1963 brought the introduction of a new product line, wood roof trusses, and the first crane truck was put into operation in 1964.

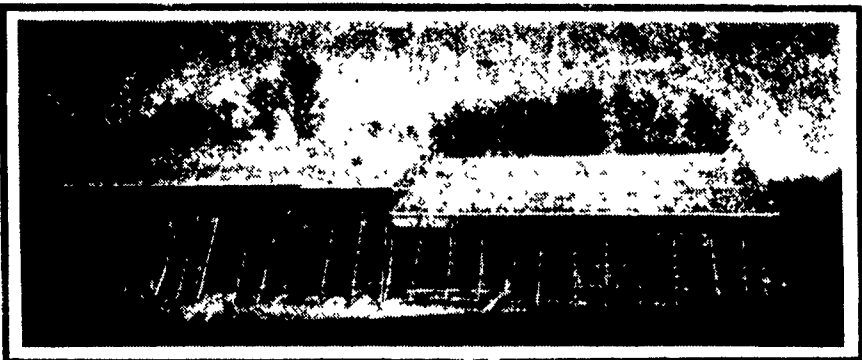


70'x112' Storage Facility

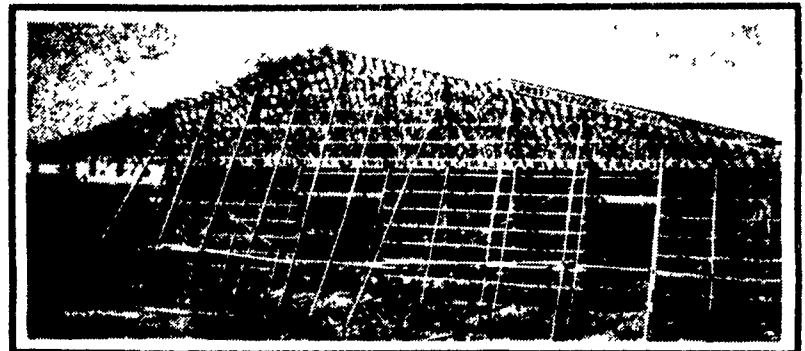
Call Our Sales Staff **TODAY** With Your Special Building Requirements And Let Us Design A Post Frame Building For **YOU!**

In 1971 the business expanded to include yet another market, that being the Post Frame Building Industry. That same year saw Rigidply develop a relationship with Fabral corp as being our supplier of steel and aluminum cladding.

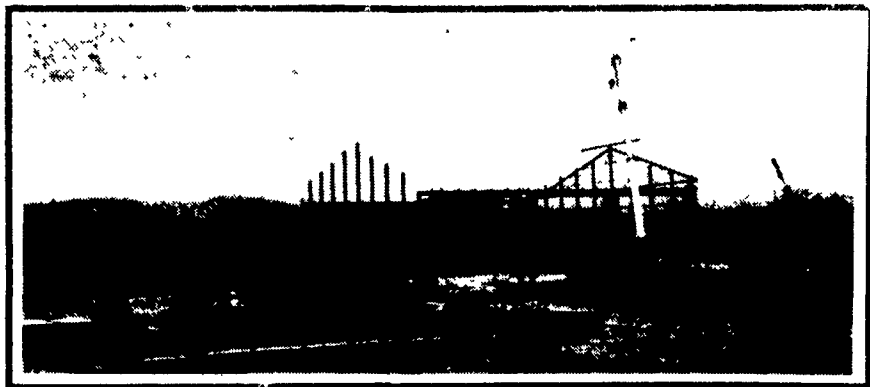
Through the years we have seen a number of changes occur in the "Pole Building Industry," as was formerly called. Today we're seeing the picture change again, but the agricultural buildings we're designing now are far more sophisticated than ever before.



Recreational Facility: Featuring 90' And 96' Span Trusses & Glu-Lam Posts.



Endwall Detail Showing Glu-Lam Posts Extending To Top Chord Of Engineered Trusses And Correct Endwall Bracing For Truss Erection.



Post frame Building Package: Lumber, Steel Cladding, Engineered trusses, Glu-Lam Posts & Glu-Lam Beams.

Improve The Quality Of Your Next Post Frame Building By Specifying Glu-Lam Posts.



The term "diaphragm action" is no longer foreign to the industry, but, there are two questions people most often ask.

How does diaphragm action work? and why should I care about diaphragm action?

Diaphragm action is a technical way of saying that the roof and ceiling of a building are being used to help carry lateral (wind) loads.

Diaphragm action is achieved when posts on the endwalls of a building, extend to the top chord of engineered trusses which are connected by purlins two feet on center. The building must then be covered with a steel cladding and fastened with screws or sheathed with plywood and nailed, which in turn helps to strengthen the building. Large openings

in the endwalls should have headers installed that are engineered to transfer the load across the opening.

Because of the diaphragm action, post sizes, and their embedment depth can be reduced, and the number of knee braces can be reduced or eliminated entirely. This leads to a stronger building for a more economical price.

In 1985, the post frame building industry received yet another benefit, the development of "The Glu-Lam Post," which are manufactured in our plant. These posts were tested and approved for use in the post frame construction industry by engineers at The Pennsylvania State University, and Wood Mechanics Personnel. These posts can be manufactured up to 60' lengths. Along with their

many benefits, they prove to be very effective in acquiring diaphragm action, because of the possibilities of the longer lengths.

We are confident that with our large inventory of post frame building materials, efficient manufacturing plants, engineering and sales personnel, we are well equipped to meet the needs of you, our customer.

Everyone at Rigidply Rafters, Inc. is fully committed to serving our customers and providing them with the finest products available. The excellence that we strive for is to show our appreciation for our customers continued loyalty to Rigidply Rafters. You deserve the best!